

# Project report

Date: Sat Nov 4 2023 08:47:44  
Build with: Z+FLaserControl 9.0.2.24038  
Project: Sf. Ghe. Vechi ext.  
Master scan position: 1

39 of 39 scans registered.

## Quality standard deviation of the cloud to cloud registration

d:3.50 mm

## Superior matrix

0.268897	0.963169	0.000000	0.0000 m
-0.963169	0.268897	0.000000	0.0000 m
0.000000	0.000000	1.000000	0.0000 m
0.000000	0.000000	0.000000	1.0000

# Scan position '1'

Scan position is member of group(s):  
Status registration '[23h] preregistered'  
Registration matrix:

-0.457880	-0.889014	0.000000	0.0000 m
0.889014	-0.457880	0.000000	0.0000 m
0.000000	0.000000	1.000000	0.0000 m
0.000000	0.000000	0.000000	1.0000

## Scan 'Sf. Ghe. Vechi ext. Sc.1'

Scanner 'Z+F IMAGER 5016' serial number '5016-0100' Firmware 9.0.3.6562-0  
Scan resolution 'High' quality 'Normal'

**Metadata**    **Value**  
**comment**  
**operator**

Scan comment: Sf. Ghe. Vechi ext. Sc.1  
Sensor  
sensors: 3100 \*barometric translation: rotation: gps  
Barometer: 1,000244 bar \*08.848 m  
nav translation: 0,0000 m 0,0000 m 108,2022 m accuracies: 5,1000 m 5,1000 m 0,0000 m  
nav rotation: 0,00000 0,0000 742,7496 accuracies: 0,0000 0,0000 15,0000  
upside-down: no  
GPS lat:44.316151 long:23.807794 satellites:4 height:148.3m hdop:3.2 vdcop:2.3m hacc:9.5-m vacc:3.8 flags:G3 stand alone 3D solution  
north:4910806.135 m east:723437.367 m zone:34T  
Initial pre position (300..toor)  
-0.458 -0.889 0.000 0.000  
0.889 -0.458 0.000 0.000  
0.000 0.000 1.000 0.000  
0.000 0.000 0.000 1.000

Level system info: dynamic compensator available.





# Scan position '11'

Scan position is member of group(s):

Status registration '[102h] registered with cloud to cloud'

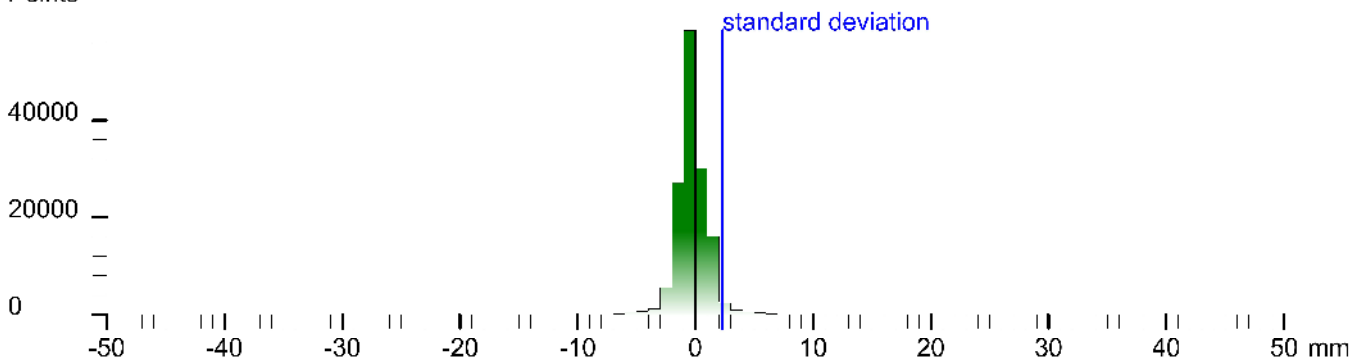
Registration matrix:

```
-0.847312  0.531091  0.002370  19.9124 m
-0.531089 -0.847315  0.001477  4.3268 m
0.002792 -0.000007  0.999996  0.1400 m
0.000000  0.000000  0.000000  1.0000
```

Result registration cloud to cloud standard deviation:2.3 mm

## Deviation histogram

Points



## Scan 'Sf. Ghe. Vechi ext. Sc.11'

Scanner 'Z+F IMAGER 5016' serial number '5016-0100' Firmware 9.0.3.6562-0

Scan resolution 'High' quality 'Normal'

**Metadata**    **Value**  
**comment**  
**operator**

```
Scan comment: 'Sf. Ghe. Vechi ext. Sc.11' Date: '2011-01-11 11:11:11' Location: 'Sf. Ghe. Vechi ext. Sc.11' Camera: 'Z+F IMAGER 5016' Camera Type: 'Z+F IMAGER 5016' Camera Quality: 'High' Camera Resolution: 'Normal' Camera Sensor: '3096 * barome or transition rotation'  
Barometer: 0.998797 bar * 21.018 m  
nav translation: 0.0000 m 0.0000 m 119.9471 m accuracies: 5.1000 m 5.1000 m 0.0003 m  
nav rotation: 0.0000 0.0000 * 27.2163 accuracies: 0.0000 0.0000 1s.0000  
up/down: no  
Initial pre position: (0/door)  
-3.605 0.796 0.000 38.067  
-3.796 -0.605 0.000 -3.382  
0.000 0.000 1.000 11.791  
0.000 0.000 0.000 1.000
```

Level system info: dynamic compensator available.



# Scan position '12'

Scan position is member of group(s):

Status registration '[122h] preregistered with cloud to cloud'

Registration matrix:

0.491334	-0.870971	0.000769	19.5368 m
0.870969	0.491335	0.002043	8.9820 m
-0.002157	-0.000334	0.999998	0.1317 m
0.000000	0.000000	0.000000	1.0000

## Scan 'Sf. Ghe. Vechi ext. Sc.12'

Scanner 'Z+F IMAGER 5016' serial number '5016-0100' Firmware 9.0.3.6562-0

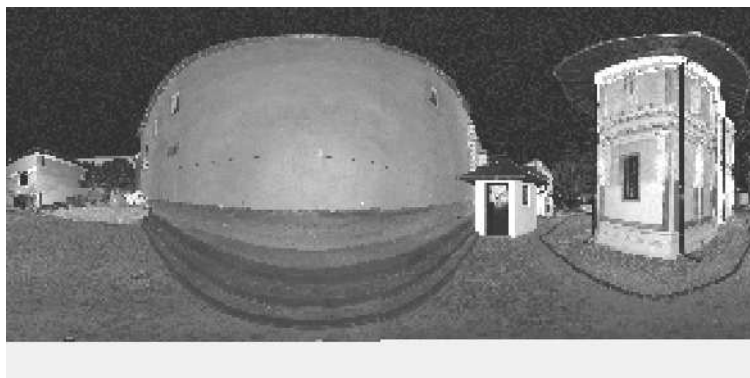
Scan resolution 'High' quality 'Normal'

Metadata	Value
comment	
operator	

Sensor

sensors: 3100 \*barometric transition: rotation gps  
Barometer: 0.998882 bar / 21.99 m  
nav translation: 0.164 m 3.1010 m 12.4905 m accuracies: 6.6636 m 6.6636 m 0.0001 m  
nav rotation: 0.00000 0.0000 299.8480 accuracies: 0.0000 0.0000 15.0000  
upside-down: no  
GPS lat:44.316273 long:23.802080 satellites:4 height:148.1m hddo:4.1 vdcp:5.5m hacc:24.0m vacc:1.4 flags:G3 'bianc alone 3D solution'  
north:4910820.774 m east:723459.717 m zone:34T  
Initial pre position (300..tooor)  
0.490 -0.867 0.000 36.181  
0.867 0.492 0.000 -0.231  
0.000 0.000 1.000 12.835  
0.000 0.000 0.000 1.000

Level system info: dynamic compensator available.







# Scan position '15'

Scan position is member of group(s):

Status registration '[102h] registered with cloud to cloud'

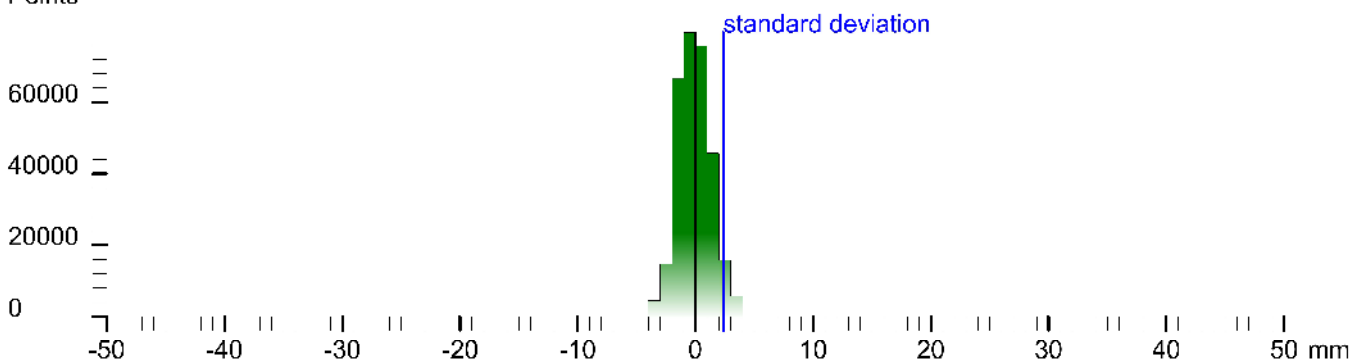
Registration matrix:

```
-0.993648 -0.112539 0.000641 8.3970 m
0.112540 -0.993647 0.001286 15.1579 m
0.000492 0.001350 0.999999 0.1299 m
0.000000 0.000000 0.000000 1.0000
```

Result registration cloud to cloud standard deviation:2.4 mm

## Deviation histogram

Points



## Scan 'Sf. Ghe. Vechi ext. Sc.15'

Scanner 'Z+F IMAGER 5016' serial number '5016-0100' Firmware 9.0.3.6562-0

Scan resolution 'High' quality 'Normal'

**Metadata**    **Value**  
**comment**  
**operator**

```
Scan comment: 'Sf. Ghe. Vechi ext. Sc.15' Date: '2023-08-15 14:00:00' File: 'Sf. Ghe. Vechi ext. Sc.15' Folder: 'Sf. Ghe. Vechi ext. Sc.15' Camera: 'Z+F IMAGER 5016' Camera Type: 'Z+F IMAGER 5016' Camera Serial: '5016-0100' Camera Firmware: '9.0.3.6562-0'
Sensor
sensors: 3100 *barometric transition rotation gps
Barometer: 0.998597 bar / 22.704 m
nav translation: -3.3080 m -13.8965 m 122.701 m accuracies: 3.3050 m 13.3050 m 0.0000 m
nav rotation: 0.0000 0.0000 78.2193 accuracies: 0.0000 0.0000 15.0000
upside-down: no
GPS lat:44.316322 long:23.801920 satellites:5 height:147.1m hdop:3.6 vdcop:1.0m hacc:25.0m vacc:12.0 tags:G3 *stand alone 3D solution
Initial pre position (3-coo. tocoor):
-1.000 0.031 0.000 34.221
-0.031 -1.000 0.000 1.783
0.000 0.000 1.000 13.445
0.000 0.000 0.000 1.000
```

Level system info: dynamic compensator available.





# Scan position '16'

Scan position is member of group(s):

Status registration '[102h] registered with cloud to cloud'

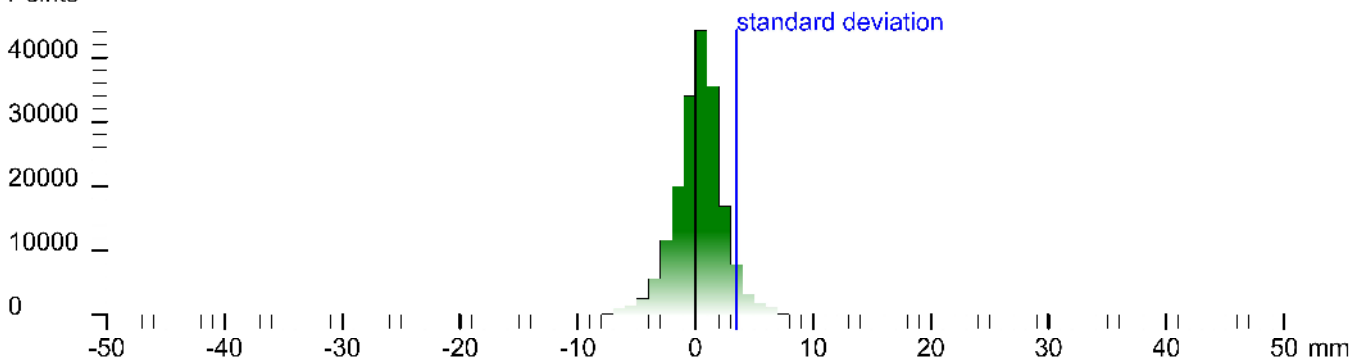
Registration matrix:

```
-0.948632 -0.316382 0.000715 2.5335 m
0.316382 -0.948632 -0.000259 16.4929 m
0.000760 -0.000020 1.000000 0.2892 m
0.000000 0.000000 0.000000 1.0000
```

Result registration cloud to cloud standard deviation:3.5 mm

## Deviation histogram

Points



## Scan 'Sf. Ghe. Vechi ext. Sc.16'

Scanner 'Z+F IMAGER 5016' serial number '5016-0100' Firmware 9.0.3.6562-0

Scan resolution 'High' quality 'Normal'

**Metadata**    **Value**  
**comment**  
**operator**

```
Scan comment: 'Sf. Ghe. Vechi ext. Sc.16' Date: '2016-08-16 10:00:00' Location: 'Sf. Ghe. Vechi ext. Sc.16' Camera: 'Z+F IMAGER 5016' Camera Type: 'Z+F IMAGER 5016' Camera Serial: '5016-0100' Camera Firmware: '9.0.3.6562-0'
Sensor
sensors: 3100 * barometer/transition rotation/gps
Barometer: 0.998369 bar / 24.825 m
nav translation: -5.9288 m -3.1753 m 123.6875 m accuracies: 8.9321 m 8.9321 m 0.0000 m
nav rotation: 0.0000 0.0000 -92.4473 accuracies: 0.0000 0.0000 1s.0000
upside-down: no
GPS lat:44.316292 long:23.807813 satellites:6 height:147.3m hddo:'.5 vdcpl:1.7m hacc:8.1m vacc:7.1 flags:G3 'stand alone 3D solution'
Initial pre position (3-coo. tocoor)
-0.975 -0.222 0.000 -0.117
0.221 -0.975 0.000 -0.645
0.000 0.000 1.000 15.092
0.000 0.000 0.000 1.000
```

Level system info: dynamic compensator available.



# Scan position '17'

Scan position is member of group(s):  
 Status registration '[102h] registered with cloud to cloud'  
 Registration matrix:

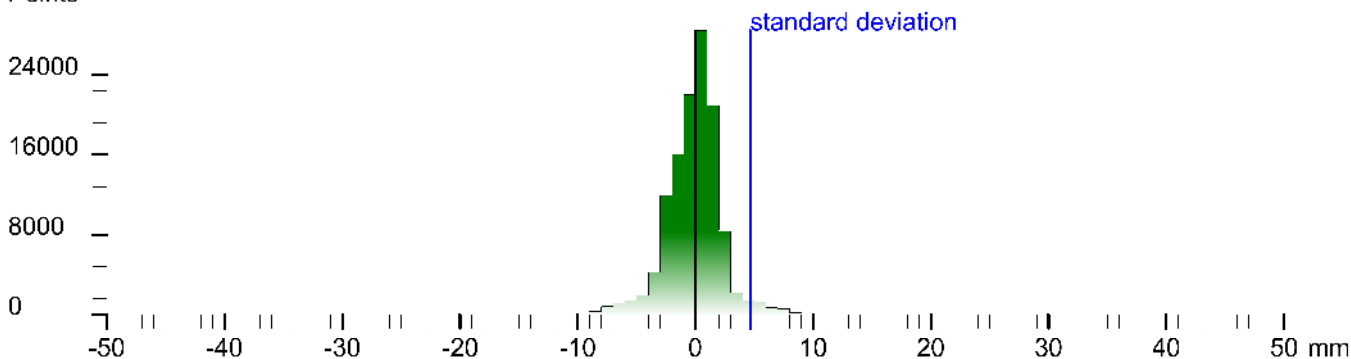
```

0.012803  0.999918  0.001061  -9.2557 m
-0.999918  0.012801  0.001074  29.0814 m
0.001061  -0.001074  0.999999  0.5255 m
0.000000  0.000000  0.000000  1.0000
    
```

Result registration cloud to cloud standard deviation:4.6 mm

## Deviation histogram

Points



## Scan 'Sf. Ghe. Vechi ext. Sc.17'

Scanner 'Z+F IMAGER 5016' serial number '5016-0100' Firmware 9.0.3.6562-0  
 Scan resolution 'High' quality 'Normal'

**Metadata**    **Value**  
**comment**  
**operator**

```

Scan comment: 'Sf. Ghe. Vechi ext. Sc.17'
Sensor
sensors: 3100 *barometric transition rotation gps
Barometer: 0.998363 bar *24.875 m
nav translation: -21.0021 m 8.0873 m 124.5506 m accuracies: 16.6008 m 16.6008 m 0.0000 m
nav rotation: 0.0000 0.0000 67.3468 accuracies: 0.0000 0.0000 15.0000
upside-down: no
GPS lat:44.316416 long:23.80727 satellites:8 height:149.5m hddo:1.2 vdcpl:1.8m hacc:6.0m vacc:7.6 flags:G3 'stand alone 3D solution'
north:4910835.613 m east:723431.026 m zone:34T
Initial pre position (3-coor):
0.046 0.999 0.000 -7.453
-0.999 0.000 0.000 33.406
0.000 0.000 1.000 15.595
0.000 0.000 0.000 1.000
    
```

Level system info: dynamic compensator available.





# Scan position '19'

Scan position is member of group(s):

Status registration '[102h] registered with cloud to cloud'

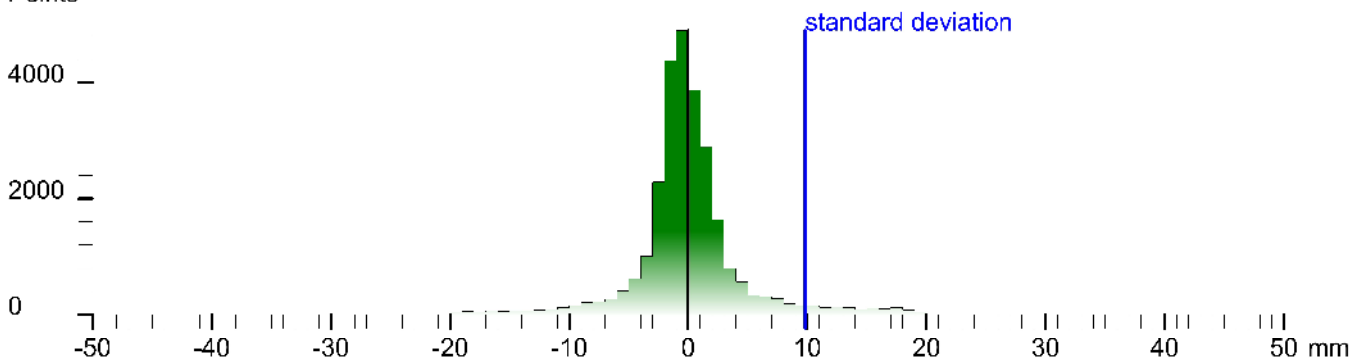
Registration matrix:

```
-0.883692 -0.468069 -0.000381 -37.2255 m  
0.468068 -0.883692 0.001344 36.8051 m  
-0.000966 0.001009 0.999999 0.8607 m  
0.000000 0.000000 0.000000 1.0000
```

Result registration cloud to cloud standard deviation:9.8 mm

## Deviation histogram

Points



## Scan 'Sf. Ghe. Vechi ext. Sc.19'

Scanner 'Z+F IMAGER 5016' serial number '5016-0100' Firmware 9.0.3.6562-0

Scan resolution 'High' quality 'Normal'

**Metadata**    **Value**  
**comment**  
**operator**

```
Scan command: call LPS@user:303 -name:148-19 -Dir:Vehi ext Sc 19 -sensor:19 -con: 'Sf. Ghe. Vechi ext. Sc.19' -obj: 'Sc.19' -mode: 'Normal' -res: 'High' -qual: 'Normal' -s: '19' -p: '19'  
Sensor  
sensors: 3100 *barome or transition rotation gps  
Barometer: 0.998060 bar *27.229 m  
nav translation: -1.5107 m 11.5113 m 120.5912 m accuracies: 13.0953 m 13.3953 m 0.3000 m  
nav rotation: 0.0000 0.0000 *93.8031 accuracies: 0.0000 0.0000 1s:0.0000  
upside-down: no  
GPS: lat:44.316513 long:23.801380 satellites:58 height:147.9m hddop:*.0 vddop:1.5m hacc:4.5-m vacc:6.6 flags:G3 'stand alone 3D solution'  
north:4910815.260 m east:723402.980 m zone:34T  
Initial pre position (3-coo. tocoo):  
-0.9711 -0.2739 0.0000 -35.487  
0.230 0.9711 0.0000 43.012  
0.000 0.000 1.000 17.535  
0.000 0.000 0.000 1.000
```

Level system info: dynamic compensator available.







# Scan position '21'

Scan position is member of group(s):

Status registration '[102h] registered with cloud to cloud'

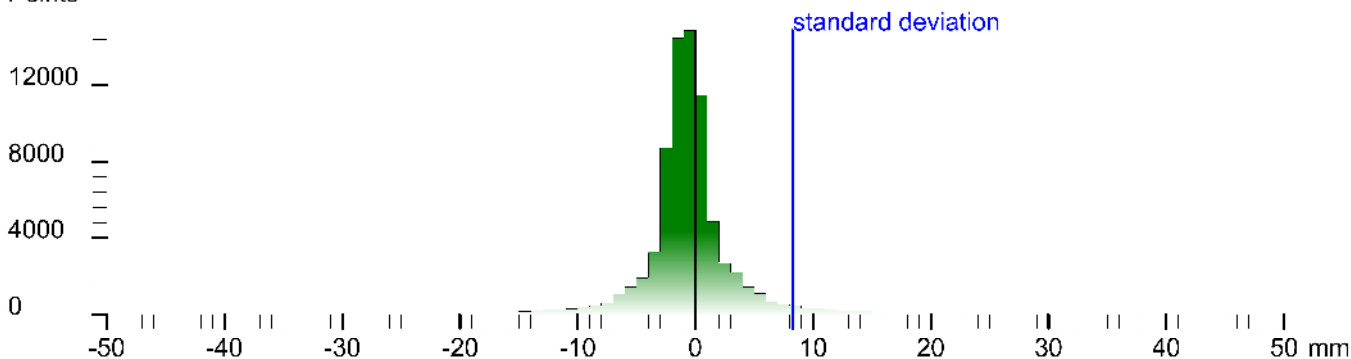
Registration matrix:

```
-0.903838  0.427874  0.001011 -29.4367 m  
-0.427875 -0.903838 -0.000640 -18.9315 m  
0.000640 -0.001011  0.999999  0.0474 m  
0.000000  0.000000  0.000000  1.0000
```

Result registration cloud to cloud standard deviation:8.3 mm

## Deviation histogram

Points



## Scan 'Sf. Ghe. Vechi ext. Sc.21'

Scanner 'Z+F IMAGER 5016' serial number '5016-0100' Firmware 9.0.3.6562-0

Scan resolution 'High' quality 'Normal'

**Metadata**    **Value**  
**comment**  
**operator**

```
Scan comment: Sf. Ghe. Vechi ext. Sc.21  
Sensor  
sensors: 3100 *barometric transition rotation gps  
Barometer: 0.998094 bar *26.945 m  
nav translation: -39.1735 m *15.0° 63 m *26.2921 m accuracies: 26.3039 m 26.3039 m 0.0000 m  
nav rotation: 0.0000 0.0000 *44.1839 accuracies: 0.0000 0.0000 15.0000  
upside-down: no  
GPS lat:44.316006 long:23.801413 satellites:8 height:151.6m hddow:1 vdcop:2.0m hacc:0.7-m vacc:7.8 flags:G3 stand alone 3D solution  
north:4910788.993 m east:723407.492 m zone:34T  
Initial pre position (3-coo. tocoor)  
-0.811 0.585 0.000 -30.830  
-0.585 -0.811 0.000 -13.2° 4  
0.000 0.000 1.000 17.636  
0.000 0.000 0.000 1.000
```

Level system info: dynamic compensator available.







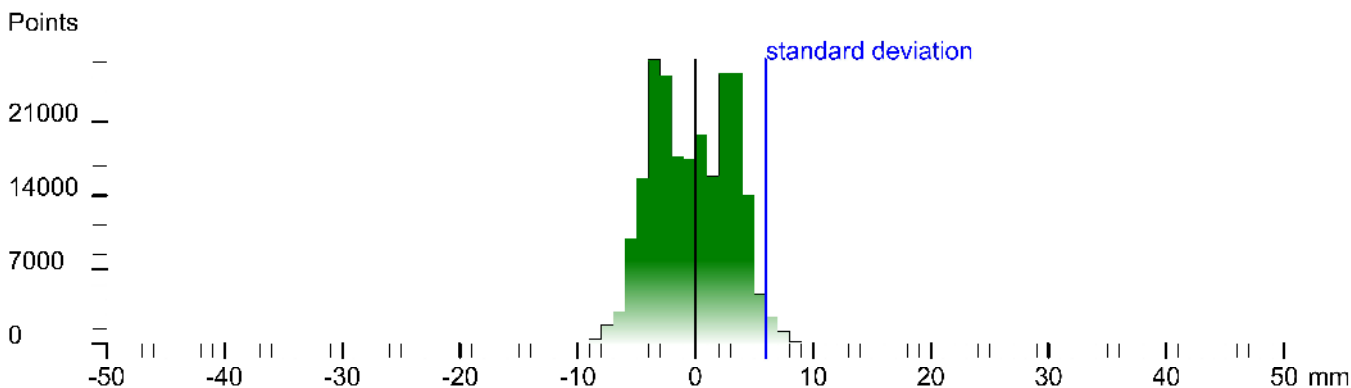
# Scan position '24'

Scan position is member of group(s):  
Status registration '[102h] registered with cloud to cloud'  
Registration matrix:

```
-0.906564 -0.422068 0.000703 -2.1881 m  
0.422068 -0.906564 -0.000852 1.2110 m  
0.000997 -0.000476 0.999999 0.0781 m  
0.000000 0.000000 0.000000 1.0000
```

Result registration cloud to cloud standard deviation:6.0 mm

## Deviation histogram



## Scan 'Sf. Ghe. Vechi ext. Sc.24'

Scanner 'Z+F IMAGER 5016' serial number '5016-0100' Firmware 9.0.3.6562-0  
Scan resolution 'High' quality 'Normal'

**Metadata**    **Value**  
**comment**  
**operator**

```
Scan comment: Sf. Ghe. Vechi ext. Sc.24  
Sensor  
sensors: 3100 *barome or transition rotation gps  
Barometer: 0.991506 bar / 82.809 m  
nav translation: -10.4339 m -0.3250 m 182.0758 m accuracies: 13.9785 m * 3.9785 m 0.0000 m  
nav rotation: 0.0000 0.0000 209.0422 accuracies: 0.0000 0.0000 1s.0000  
upside-down: no  
GPS lat:44.316151 long:23.80773 satellites:7 height:146.5m hddo:1.7 vddcp:2.3m hacc:5.1 m vacc:5.4 flags:G3 stand alone 3D solution  
north:4910806.077 m east:723435.690 m zone:34T  
Initial pre position (3-coo. tocoor):  
-0.874 -0.485 0.000 -2.771  
0.485 -0.874 0.000 3.674  
0.000 0.000 1.000 73.420  
0.000 0.000 0.000 1.000
```

Level system info: dynamic compensator available.



# Scan position '25'

Scan position is member of group(s):

Status registration '[102h] registered with cloud to cloud'

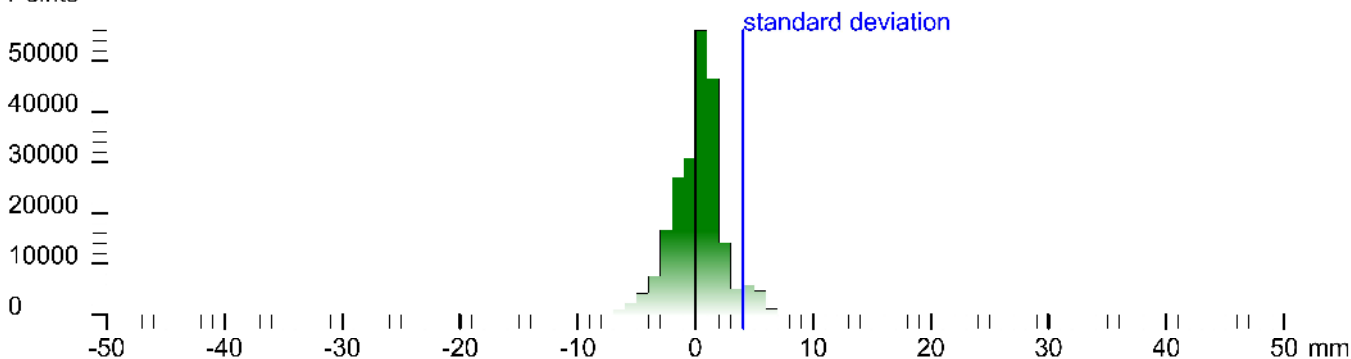
Registration matrix:

```
0.662884 -0.748722 -0.000279 -6.0435 m
0.748722 0.662884 0.000416 2.3511 m
-0.000126 -0.000484 1.000000 0.0338 m
0.000000 0.000000 0.000000 1.0000
```

Result registration cloud to cloud standard deviation:4.1 mm

## Deviation histogram

Points



## Scan 'Sf. Ghe. Vechi ext. Sc.25'

Scanner 'Z+F IMAGER 5016' serial number '5016-0100' Firmware 9.0.3.6562-0

Scan resolution 'High' quality 'Normal'

**Metadata**    **Value**  
**comment**  
**operator**

```
Scan comment: Sf. Ghe. Vechi ext. Sc.25' serial: 5016-0100' firmware: 9.0.3.6562-0' quality: High' resolution: Normal' standard deviation: 4.1 mm' registration: cloud to cloud' status: registered with cloud to cloud' registration matrix: [[0.662884, -0.748722, -0.000279, -6.0435, 0.748722, 0.662884, 0.000416, 2.3511, -0.000126, -0.000484, 1.000000, 0.0338, 0.000000, 0.000000, 0.000000, 1.0000]]
Sensor
sensors: 3100 * barometric transition rotation gps
Barometer: 0.991523 bar * 82467 m
nav translation: -2.6265 m 1.7006 m 181.8017 m accuracies: 0.6959 m 0.5959 m 0.0002 m
nav rotation: 0.0000 0.0000 0.0000 accuracies: 0.0000 0.0000 1s.0000
upside-down: no
GPS sat: 4, 3, 16, 1, 3 long: 23.80716 satellites: 7 height: 148.8m hddo: 0.6 vdcop: 2.1m hacc: 6.7m vacc: 6.4 flags: G3 stand alone 3D solution'
north: 4910985.074 m east: 723431.156 m zone: 34T
Initial pre position (3-coo. tocoo):
0.673 -0.740 0.000 -7.286
0.740 0.873 0.000 2.830
0.000 0.000 1.000 73.216
0.000 0.000 0.000 1.000
```

Level system info: dynamic compensator available.









# Scan position '29'

Scan position is member of group(s):  
 Status registration '[102h] registered with cloud to cloud'  
 Registration matrix:

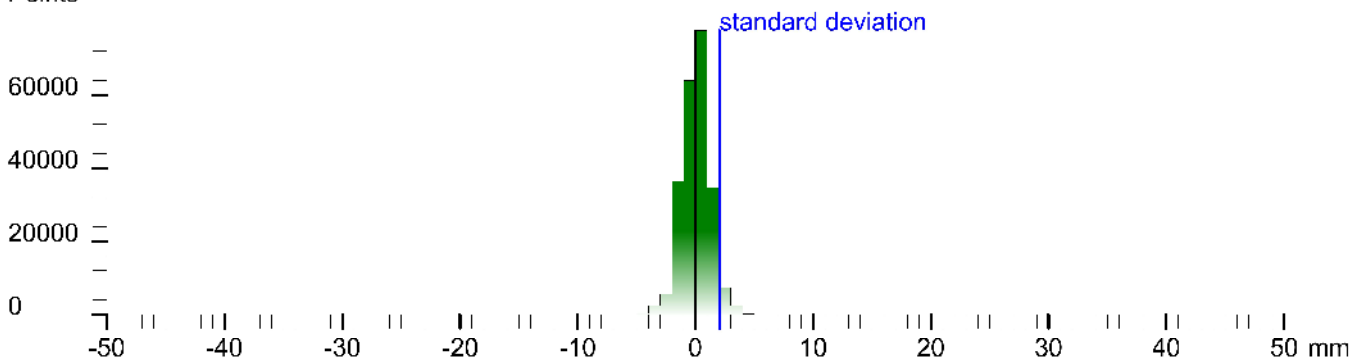
```

0.769384 -0.638786 -0.000180 -2.2466 m
0.638786 0.769384 0.000954 8.8562 m
-0.000471 -0.000849 1.000000 0.1586 m
0.000000 0.000000 0.000000 1.0000
    
```

Result registration cloud to cloud standard deviation:2.0 mm

## Deviation histogram

Points



## Scan 'Sf. Ghe. Vechi ext. Sc.29'

Scanner 'Z+F IMAGER 5016' serial number '5016-0100' Firmware 9.0.3.6562-0  
 Scan resolution 'High' quality 'Normal'

**Metadata**    **Value**  
**comment**  
**operator**

```

Scan comment: Sf. Ghe. Vechi ext. Sc.29' serial: '5016-0100' firmware: '9.0.3.6562-0'
Sensor
sensors: 3100 *barometer/transition rotation/gps
Barometer: 0.991697 bar / 80.993 m
nav translation: 0.6251 m 1.2394 m 180.470 m accuracies: 5.78/8 m 5.78/8 m 3.0000 m
nav rotation: 0.0000 0.0000 342.29/4 accuracies: 0.0000 0.0000 1s.0000
upside-down: no
GPS lat:44.316254 long:23.807807 satellites:3 height:145.7m hdop:6.2 vtdcp:1.0m hacc:25.0m vacc:20.0 tags:G2 'stand alone 2D solution'
north:4910817.612 m east:723438.037 m zone:34T
Initial pre position (0:indoor)
0.953 -0.304 0.000 7.788
0.304 0.953 0.000 13.424
0.000 0.000 1.000 71.792
0.000 0.000 0.000 1.000
    
```

Level system info: dynamic compensator available.





# Scan position '30'

Scan position is member of group(s):

Status registration '[122h] preregistered with cloud to cloud'

Registration matrix:

0.959781	0.280750	0.000474	0.1106 m
-0.280750	0.959781	0.000886	7.5641 m
-0.000206	-0.000984	1.000000	0.1571 m
0.000000	0.000000	0.000000	1.0000

## Scan 'Sf. Ghe. Vechi ext. Sc.30'

Scanner 'Z+F IMAGER 5016' serial number '5016-0100' Firmware 9.0.3.6562-0

Scan resolution 'High' quality 'Normal'

**Metadata**    **Value**  
**comment**  
**operator**

```
Scan comment: Sf. Ghe. Vechi ext. Sc.30  
Sensor  
sensors: 3100 *barometric translation rotation gps  
Barometer: 0.991867 bar * 79.557 m  
nav translation: 1.2105 m *3.1709 m 180.6794 m accuracies: 5.722* m 5.722* m 0.0000 m  
nav rotation: 0.0000 0.0000 21.492* accuracies: 0.0000 0.0000 15.0000  
upside-down: no  
GPS lat:44.3161+3 long:23.801489 satellites:3 height:157.4m hddo:6.8 vdcpl:1.0m hacc:5.8-m vacc:1.4 flags:G2 stand alone 2D solution  
north:4910804.155 m east:72341.3056 m zone:34T  
Initial pre position (0:Indoor)  
0.930 0.366 0.000 3.999  
-0.366 0.930 0.000 -3.253  
0.000 0.000 1.000 72.021  
0.000 0.000 0.000 1.000
```

Level system info: dynamic compensator available.







# Scan position '33'

Scan position is member of group(s):

Status registration '[102h] registered with cloud to cloud'

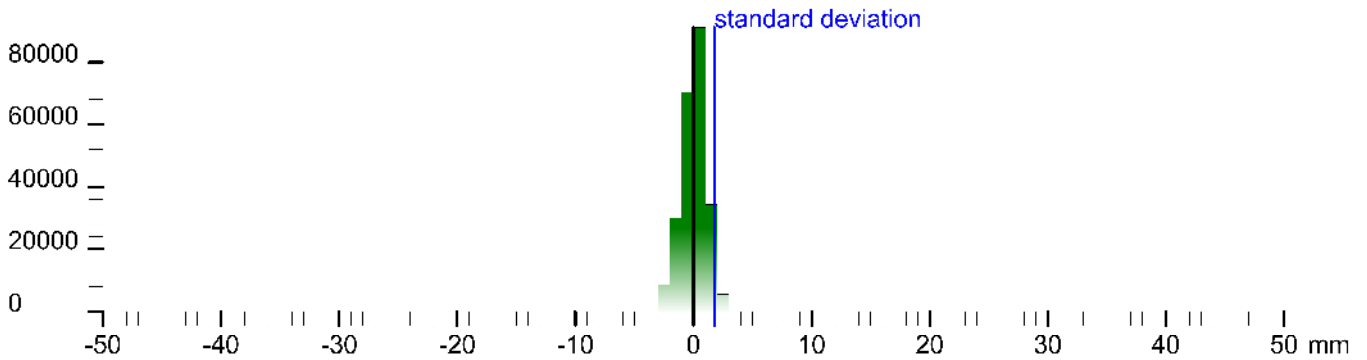
Registration matrix:

```
-0.750180  0.661232  0.001229  2.4006 m
-0.661234 -0.750180 -0.000835  5.5254 m
0.000370 -0.001438  0.999999  0.0456 m
0.000000  0.000000  0.000000  1.0000
```

Result registration cloud to cloud standard deviation: 1.8 mm

## Deviation histogram

Points



## Scan 'Sf. Gheorghe Vechi Sc.3'

Scanner 'Z+F IMAGER 5016' serial number '5016-0100' Firmware 9.0.3.6562-0

Scan resolution 'High' quality 'Normal'

**Metadata**    **Value**  
**comment**  
**operator**

```
Scan position: '33' - name: '14815' - description: 'Scan position 33' - status: 'Registered with cloud to cloud' - registration matrix: '[[[-0.750180, 0.661232, 0.001229, 2.4006], [-0.661234, -0.750180, -0.000835, 5.5254], [0.000370, -0.001438, 0.999999, 0.0456], [0.000000, 0.000000, 0.000000, 1.0000]]]' - standard deviation: 1.8 mm
```

Sensors: 3096 'barometer transition rotation'  
Barometer: 1.000691 bar ± 0.0003 m  
nav translation: -3.8972 m -1.3055 m 104.2818 m accuracies: 5.9844 m 5.8844 m 0.0000 m  
nav rotation: 0.0000 0.0000 37.7262 accuracies: 0.0000 0.0000 1s.0000  
upside-down: no  
Initial pre position: (0 indoor)  
-3.740 0.673 0.000 -0.232  
-3.613 -0.740 0.000 0.776  
0.000 0.000 1.000 1.381  
0.000 0.000 0.000 1.000

Level system info: dynamic compensator available.



# Scan position '34'

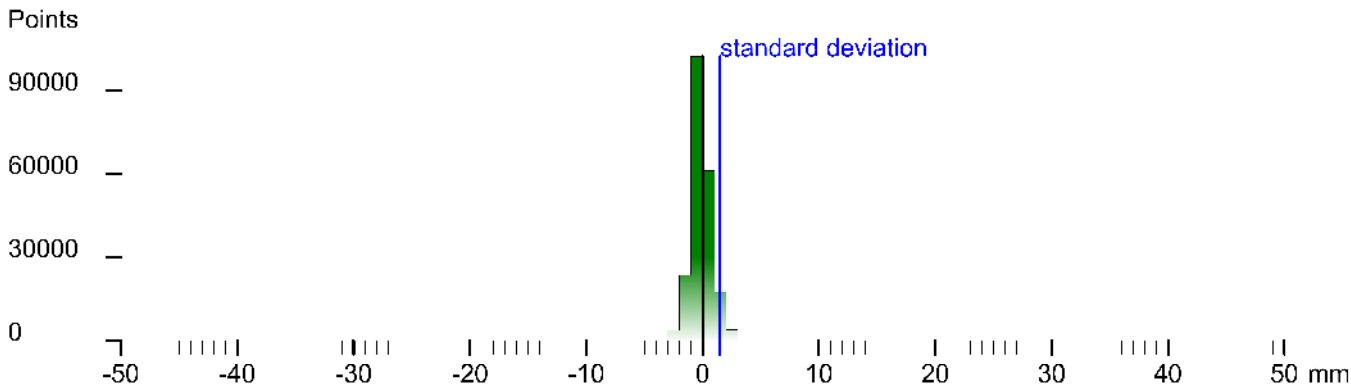
Scan position is member of group(s):  
 Status registration '[102h] registered with cloud to cloud'  
 Registration matrix:

```

0.994468  0.105041  0.000513  4.6545 m
-0.105041 0.994468  0.000809  7.3211 m
-0.000425 -0.000859 1.000000  0.0438 m
0.000000  0.000000  0.000000  1.0000
    
```

Result registration cloud to cloud standard deviation: 1.5 mm

## Deviation histogram



# Scan 'Sf. Gheorghe Vechi Sc.4'

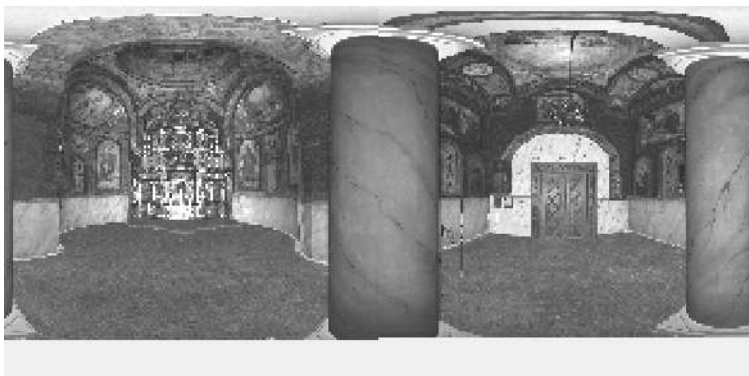
Scanner 'Z+F IMAGER 5016' serial number '5016-0100' Firmware 9.0.3.6562-0  
 Scan resolution 'High' quality 'Normal'

**Metadata**    **Value**  
**comment**  
**operator**

```

Sensor
sensors: 3096 *barometric transition rotation*
Barometer: 1.000655 bar / 05.385 m
nav translation: 0.4511 m 0.2504 m 105.8729 m accuracies: 5.3618 m 5.3618 m 0.0000 m
nav rotation: 0.0000 0.0000 5.8603 accuracies: 0.0000 0.0000 1s.0000
upside-down: no
Initial pre position: (0 indoor)
0.995 0.102 0.000 0.252
-0.102 0.995 0.000 0.427
0.000 0.000 1.000 2.969
0.000 0.000 0.000 1.000
    
```

Level system info: dynamic compensator available.



# Scan position '35'

Scan position is member of group(s):

Status registration '[102h] registered with cloud to cloud'

Registration matrix:

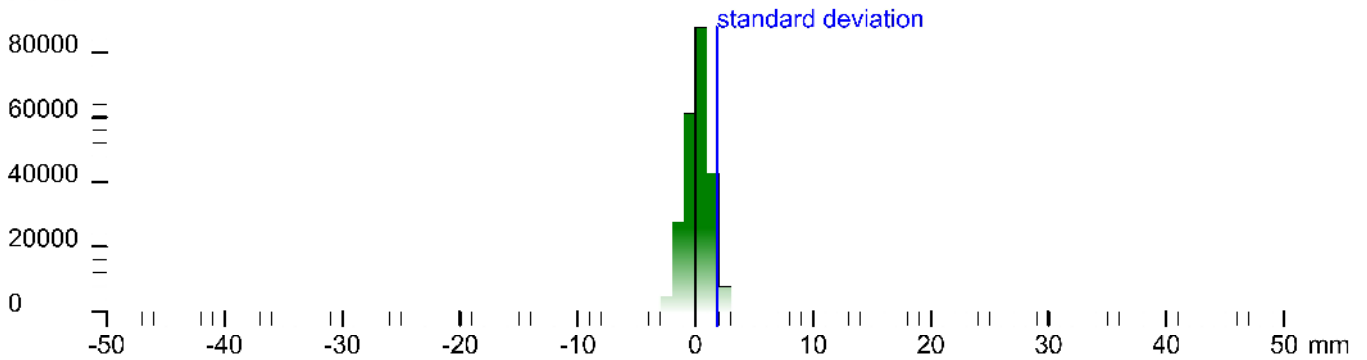
```

0.891760  0.452508  0.000880  8.3763 m
-0.452508  0.891761  0.000655  4.2889 m
-0.000488 -0.000983  1.000000  0.0427 m
0.000000  0.000000  0.000000  1.0000
    
```

Result registration cloud to cloud standard deviation: 1.8 mm

## Deviation histogram

Points



# Scan 'Sf. Gheorghe Vechi Sc.5'

Scanner 'Z+F IMAGER 5016' serial number '5016-0100' Firmware 9.0.3.6562-0

Scan resolution 'High' quality 'Normal'

**Metadata**    **Value**  
**comment**  
**operator**

```

Scan position: '35' - member: '14815' - Group: 'Vechi Sc.5' - scanner: 'Z+F IMAGER 5016' - cloud-to-cloud: '0.891760 0.452508 0.000880 8.3763 m' - registration: '102h' - status: 'registered with cloud to cloud'
Sensor
sensors: 3096 *barometric transition rotation*
Barometer: 1.000661 bar / 05.338 m
nav translation: 5.0624 m 0.510 m 105.1470 m accuracies: 7.6184 m 7.6184 m 0.0000 m
nav rotation: 0.0000 0.0000 24.3614 accuracies: 0.0000 0.0000 0.0000
up/down: no
Initial position: (Girdoor)
0.811 0.112 0.000 5.311
-0.412 0.911 0.000 0.578
0.000 0.000 1.000 2.244
0.000 0.000 0.000 1.000
    
```

Level system info: dynamic compensator available.





# Scan position '37'

Scan position is member of group(s):

Status registration '[102h] registered with cloud to cloud'

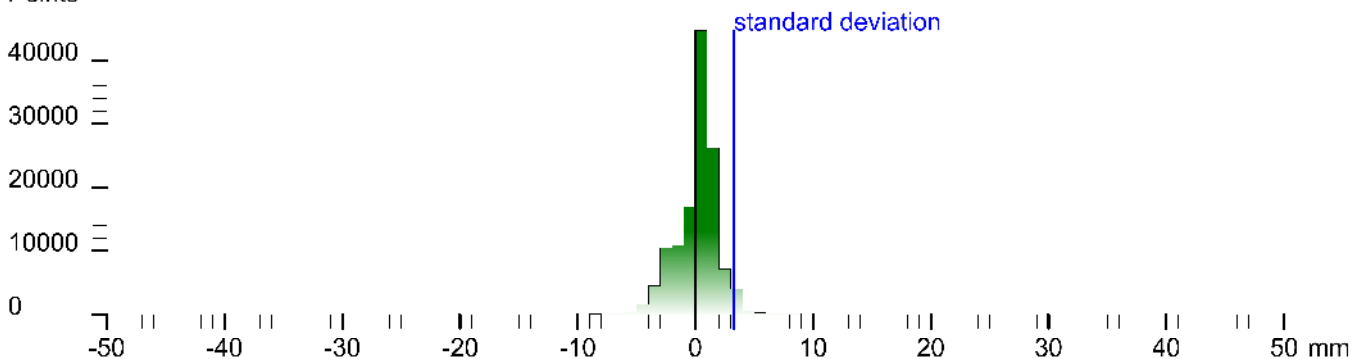
Registration matrix:

0.493880	0.869529	0.001646	11.5071 m
-0.869530	0.493881	0.000390	9.2847 m
-0.000473	-0.001624	0.999999	0.2000 m
0.000000	0.000000	0.000000	1.0000

Result registration cloud to cloud standard deviation:3.3 mm

## Deviation histogram

Points



## Scan 'Sf. Gheorghe Vechi Sc.7'

Scanner 'Z+F IMAGER 5016' serial number '5016-0100' Firmware 9.0.3.6562-0

Scan resolution 'High' quality 'Normal'

**Metadata**    **Value**  
**comment**  
**operator**

```
Scan position: '37' - name: '14816' - description: 'Sf. Gheorghe Vechi Sc.7' - scan: '37' - sensor: 'Z+F IMAGER 5016' - resolution: 'High' - quality: 'Normal' - registration: 'cloud to cloud' - standard deviation: '3.3 mm' - registration matrix: '[[0.493880, 0.869529, 0.001646, 11.5071, -0.869530, 0.493881, 0.000390, 9.2847, -0.000473, -0.001624, 0.999999, 0.2000, 0.000000, 0.000000, 0.000000, 1.0000]]'
```

Sensors: 3096 'barometric transition rotation'  
Barometer: 1.000440 bar / 07.134 m  
nav translation: 2.718 m -1.5027 m 106.8975 m accuracies: 0.4553 m 0.4553 m 0.0000 m  
nav rotation: 0.0000 0.0000 0.0000 0.0000 0.0000 0.0000 0.0000 0.0000 0.0000  
upside-down: no  
Initial pre position: (0 indoor)  
0.516 0.838 0.000 0.000  
-0.888 0.546 0.000 0.992  
0.000 0.000 1.000 3.994  
0.000 0.000 0.000 1.000

Level system info: dynamic compensator available.



# Scan position '38'

Scan position is member of group(s):

Status registration '[102h] registered with cloud to cloud'

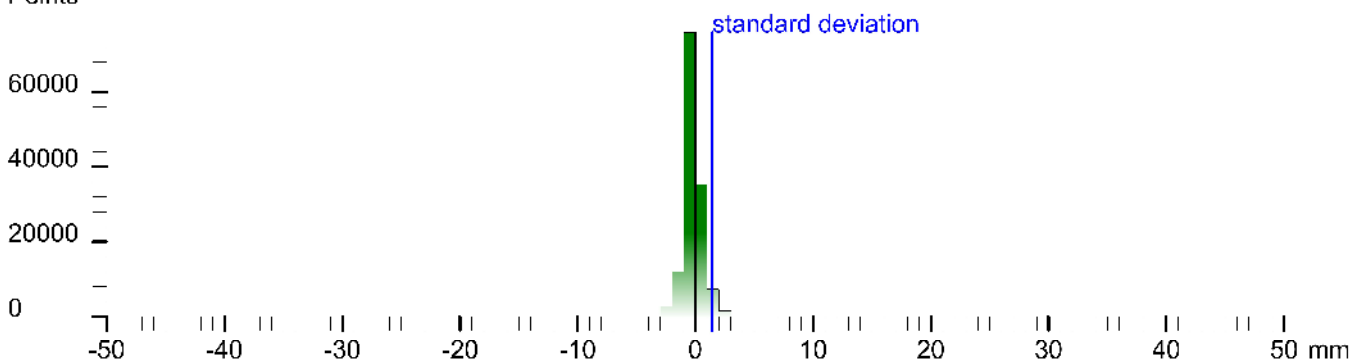
Registration matrix:

0.463597	0.886045	0.001652	13.1610 m
-0.886046	0.463598	0.000029	8.6400 m
-0.000740	-0.001478	0.999999	0.1972 m
0.000000	0.000000	0.000000	1.0000

Result registration cloud to cloud standard deviation: 1.4 mm

## Deviation histogram

Points



## Scan 'Sf. Gheorghe Vechi Sc.8'

Scanner 'Z+F IMAGER 5016' serial number '5016-0100' Firmware 9.0.3.6562-0

Scan resolution 'High' quality 'Normal'

Metadata	Value
comment	
operator	

Sensor  
sensors: 3096 \*barometric transition rotation\*  
Barometer: 1.000378 bar / 37.716 m  
nav translation: 0.5614 m -0.4105 m 107.6873 m accuracies: 5.49/3 m 5.49/3 m 0.0000 m  
nav rotation: 0.0000 0.0000 0.0000 accuracies: 0.0000 0.0000 15.0000  
up/down: no  
Initial position (Girdoor)  
0.635 0.773 0.000 6.751  
-0.773 0.635 0.000 6.581  
0.000 0.000 1.000 4.763  
0.000 0.000 0.000 1.000

Level system info: dynamic compensator available.



# Scan position '39'

Scan position is member of group(s):

Status registration '[102h] registered with cloud to cloud'

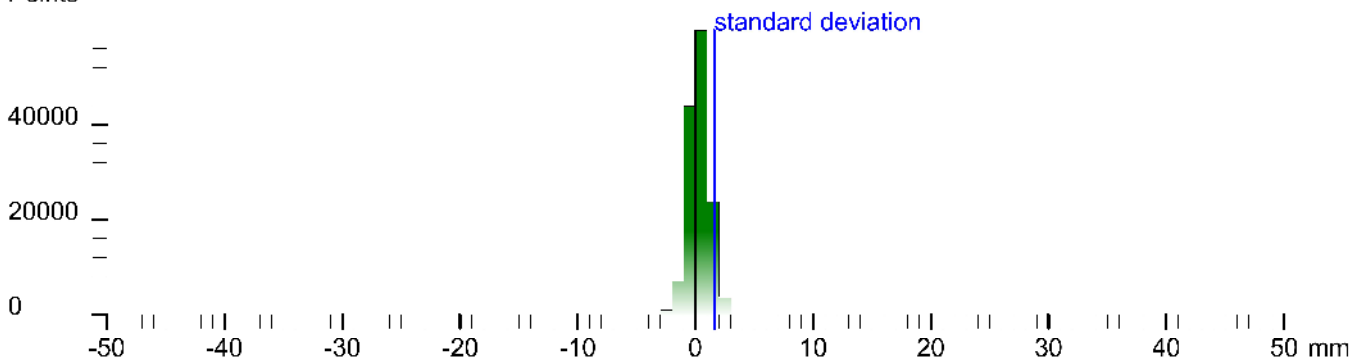
Registration matrix:

0.833299	0.552821	0.001681	15.2097 m
-0.552822	0.833300	0.000376	7.1428 m
-0.001193	-0.001243	0.999999	0.1645 m
0.000000	0.000000	0.000000	1.0000

Result registration cloud to cloud standard deviation: 1.6 mm

## Deviation histogram

Points



## Scan 'Sf. Gheorghe Vechi Sc.9'

Scanner 'Z+F IMAGER 5016' serial number '5016-0100' Firmware 9.0.3.6562-0

Scan resolution 'High' quality 'Normal'

Metadata	Value
comment	
operator	

```
Scan position: '39' - name: '14815' - description: 'Sf. Gheorghe Vechi Sc.9' - sensor: 'Z+F IMAGER 5016' - resolution: 'High' - quality: 'Normal' - status: 'Registered with cloud to cloud' - registration: '102h' - standard deviation: 1.6 mm - points: 400000  
Sensor  
sensors: 3096 *barometric transition rotation*  
Barometer: 1.000311 bar 108.282 m  
nav translation: 1.4671 m 0.412 m 107.9531 m accuracies: 5.84/3 m 5.84/3 m 0.0000 m  
nav rotation: 0.0000 0.0000 0.999999 accuracies: 0.0000 0.0000 0.0000  
upside-down: no  
Initial pre position: (0/door)  
0.511 0.581 0.000 8.278  
-0.581 0.814 0.000 1.226  
0.000 0.000 1.000 5.049  
0.000 0.000 0.000 1.000
```

Level system info: dynamic compensator available.





# Scan position '4'

Scan position is member of group(s):

Status registration '[102h] registered with cloud to cloud'

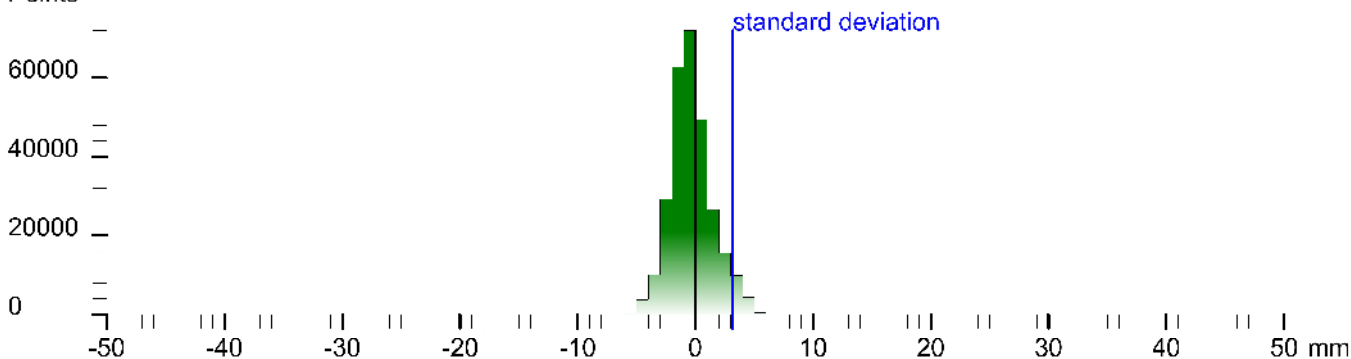
Registration matrix:

```
-0.829419 -0.558627 0.000614 10.3598 m
0.558627 -0.829420 -0.000196 1.7458 m
0.000618 0.000180 1.000000 0.0137 m
0.000000 0.000000 0.000000 1.0000
```

Result registration cloud to cloud standard deviation:3.2 mm

## Deviation histogram

Points



## Scan 'Sf. Ghe. Vechi ext. Sc.4'

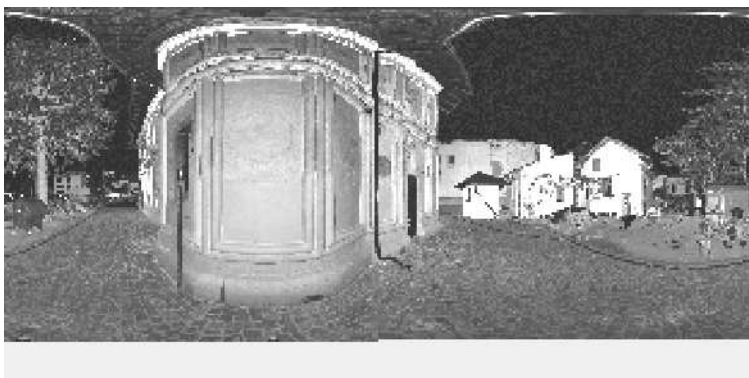
Scanner 'Z+F IMAGER 5016' serial number '5016-0100' Firmware 9.0.3.6562-0

Scan resolution 'High' quality 'Normal'

**Metadata**    **Value**  
**comment**  
**operator**

```
Scan comment: 'Sf. Ghe. Vechi ext. Sc.4' Date: '2014-10-16 14:18:16' Site: 'Vechi' File: 'Sf. Ghe. Vechi ext. Sc.4' Project: 'Sf. Ghe. Vechi ext. Sc.4' Camera: 'Z+F IMAGER 5016' Sensor: 'Z+F IMAGER 5016'
Sensor
sensors: 3100 *barometer transition rotation gps
Barometer: 1.000032 bar ~10.823 m
nav translation: 4.4718 m 2.6372 m 110.5258 m accuracies: 7.8267 m 7.8267 m 0.0000 m
nav rotation: 0.0000 0.0000 214.8863 accuracies: 0.0000 0.0000 15.0000
upside-down: no
GPS lat:44.316090 long:23.801910 satellites:3 height:150.3m hdop:5.7 vdcpr:1.0m hacc:22.0m vacc:8.6 flags:G2's are above 2D solution'
north:4910798.672 m east:723416.877 m zone:34T
Initial pre position (3-coor):
-0.8295 -0.5586 0.0006 10.3598
0.5586 -0.8294 -0.0002 1.7458
0.0006 0.0002 1.0000 0.0137
0.0000 0.0000 0.0000 1.0000
```

Level system info: dynamic compensator available.



# Scan position '40'

Scan position is member of group(s):

Status registration '[102h] registered with cloud to cloud'

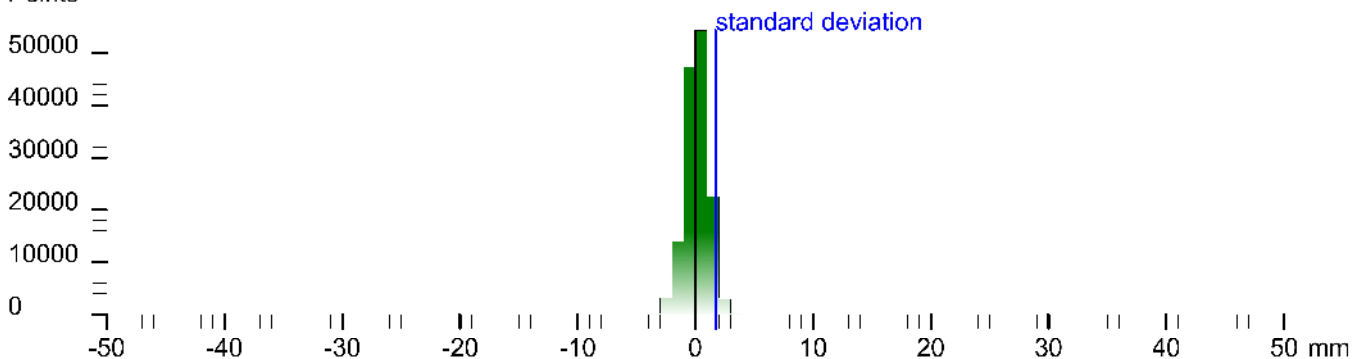
Registration matrix:

0.426411	0.904529	0.001628	13.1288 m
-0.904530	0.426411	0.000232	5.8033 m
-0.000484	-0.001572	0.999999	0.2469 m
0.000000	0.000000	0.000000	1.0000

Result registration cloud to cloud standard deviation: 1.7 mm

## Deviation histogram

Points



## Scan 'Sf. Gheorghe Vechi Sc.11'

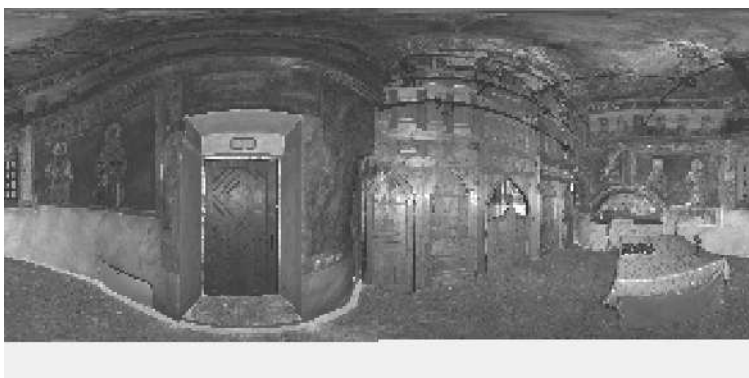
Scanner 'Z+F IMAGER 5016' serial number '5016-0100' Firmware 9.0.3.6562-0

Scan resolution 'High' quality 'Normal'

**Metadata**    **Value**  
**comment**  
**operator**

```
Scan comment: 'Sf. Gheorghe Vechi Sc.11' serial number '5016-0100' Firmware 9.0.3.6562-0  
Sensor  
sensors: 3096 *barometric transition rotation*  
Barometer: 0.991571 bar / 82.06 m  
nav translation: 0.0000 m 0.0000 m 182.1853 m accuracies: 5.1000 m 5.1000 m 0.0000 m  
nav rotation: 0.0000 0.0000 /1.10/2 accuracies: 0.0000 0.0000 /5.0000  
up/down: no  
Initial pre position: (Girdoor)  
0.321 0.916 0.000 8.278  
-0.946 0.324 0.000 7.226  
0.000 0.000 1.000 79.281  
0.000 0.000 0.000 1.000
```

Level system info: dynamic compensator available.







# Scan position '6'

Scan position is member of group(s):

Status registration '[102h] registered with cloud to cloud'

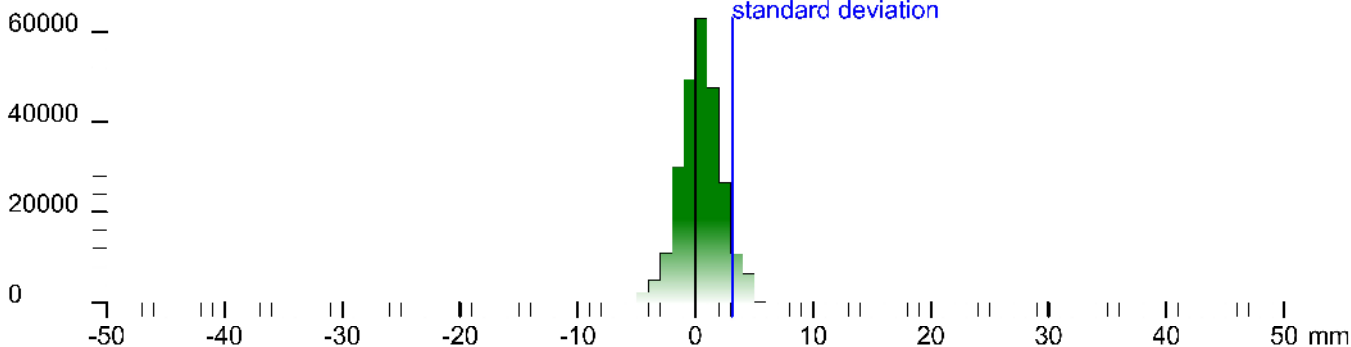
Registration matrix:

```
0.244119 -0.969745 0.000821 14.6753 m
0.969747 0.244118 0.000060 -5.5182 m
-0.000258 0.000781 1.000000 2.3336 m
0.000000 0.000000 0.000000 1.0000
```

Result registration cloud to cloud standard deviation:3.1 mm

## Deviation histogram

Points



## Scan 'Sf. Ghe. Vechi ext. Sc.6'

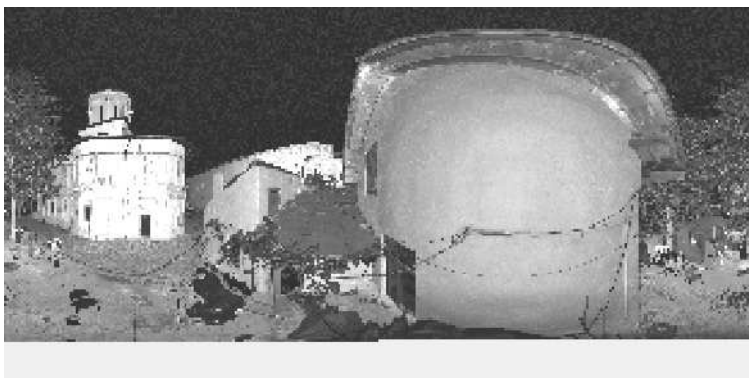
Scanner 'Z+F IMAGER 5016' serial number '5016-0100' Firmware 9.0.3.6562-0

Scan resolution 'High' quality 'Normal'

**Metadata**    **Value**  
**comment**  
**operator**

```
Scan comment: null
Sensor
sensors: 3100 *barometer
Barometer: 0.999207 bar ~17.57 m
nav translation: 3.4622 m 3.3419 m 116.1467 m accuracies: 7.5164 m 7.5164 m 0.0002 m
nav rotation: 0.0000 0.0000 281.183s accuracies: 0.0000 0.0000 1s.0000
upside-down: no
GPS lat:44.316093 long:23.802008 satellites:4 height:145.1m hddo:2.1 vdcp:3.6m hacc:8.4m vacc:11.0 tags:G3 'stand alone 3D solution'
Initial pre position (3-coo. tocoor):
0.961 -0.981 0.000 9.520
0.000 0.000 1.000 7.481
0.000 0.000 0.000 1.000
```

Level system info: no information about the level system stored in the zfs header







# Scan position '9'

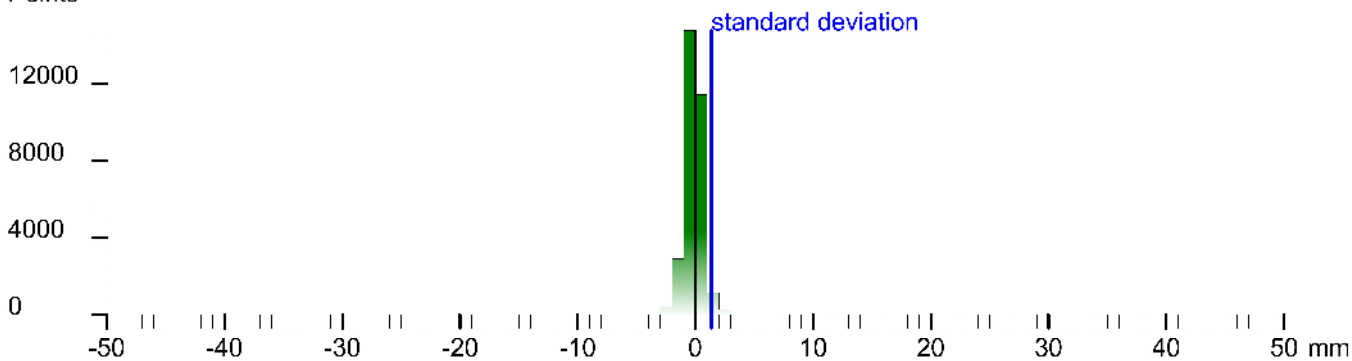
Scan position is member of group(s):  
 Status registration '[102h] registered with cloud to cloud'  
 Registration matrix:

```
-0.484239  0.874934  0.001896  21.3567 m
-0.874935 -0.484241  0.000642  1.4664 m
 0.001480 -0.001348  0.999998  0.5835 m
 0.000000  0.000000  0.000000  1.0000
```

Result registration cloud to cloud standard deviation: 1.4 mm

## Deviation histogram

Points



## Scan 'Sf. Ghe. Vechi ext. Sc.9'

Scanner 'Z+F IMAGER 5016' serial number '5016-0100' Firmware 9.0.3.6562-0  
 Scan resolution 'High' quality 'Normal'

**Metadata**    **Value**  
**comment**  
**operator**

```
Scan comment: 'Sf. Ghe. Vechi ext. Sc.9' Date: '2018-08-08 14:18:18' File: 'Sf. Ghe. Vechi ext. Sc.9' Project: 'Sf. Ghe. Vechi ext. Sc.9'
Sensor
sensors: 3096 *barometric transition rotation*
Barometer: 0.998979 bar *19.458 m
nav translation: 11.5550 m -0.8930 m 119.4067 m accuracies: 11.0322 m 11.0322 m 0.0000 m
nav rotation: 0.0000 0.0000 *18.2528 accuracies: 0.0000 0.0000 1s.0000
upside-down: no
Initial pre position: (0/door)
-3.473 0 881 0.000 31.160
-3.881 -0.473 0.000 1.736
0.000 0.000 1.000 10.751
0.000 0.000 0.000 1.000
```

Level system info: dynamic compensator available.





# Labels

No labels stored in project

# Links

No links stored in project

# Summary

Number of scans: **39** used in **39** scan positions

Point clouds: **0**

Scans with color: **0** mapped **0**

Scans with thermal data: **0** mapped **0**

Scans with errors: **1** warnings: **0** messages: **0**

Missed or corrupted scans files: **0**

Scanners used in the project: **5016-0100**

**0** known targets used

**0** targets used in **0** of **39** scan positions

First scan taken at: **2.11.2023 09:38::32** last scan at: **3.11.2023 09:34:37**

Duration: **23h 56min 5sec**