

# Project report

Date: Fri Oct 14 2022 15:12:38  
Build with: Z+FLaserControl 9.0.2.24038  
Project: Bis Campulung  
Master scan position: 1

## Quality standard deviation of the cloud to cloud registration

d:3.05 mm

## Superior matrix

1.000000	0.000000	0.000000	0.0000 m
0.000000	1.000000	0.000000	0.0000 m
0.000000	0.000000	1.000000	0.0000 m
0.000000	0.000000	0.000000	1.0000

# Scan position '1'

Scan position is member of group(s):  
Status registration '[23h] preregistered'  
Registration matrix:

```
0.997339 -0.072905 0.000000 0.0000 m
0.072905 0.997339 0.000000 0.0000 m
0.000000 0.000000 1.000000 0.0000 m
0.000000 0.000000 0.000000 1.0000
```

## Scan '1'

Scanner 'Z+F IMAGER 5016' serial number '5016-0100' Firmware 9.0.3.6562-0  
Scan resolution 'High' quality 'Normal'

### Metadata Value comment operator

```
Scan comment: null  
Sensor  
sensors: 3100 *barometric translation rotation gps  
Barometer: 0.943700 bar 595.737 m  
nav translation: 0.0000 m 0.0000 m 595.37 m accuracies: 5.1000 m 5.1000 m 0.0002 m  
nav rotation: 0.00000 0.0000 0.0000 335.8191 accuracies: 0.00000 0.0000 15.0000  
upside-down: no  
GPS lat:45.271600 long:25.045017 satellites:5 height:642.2m hdop:1.6 vdcpr:3.6m hacc:6.0m vacc:16.0 flags:G3 'static alone 3D solution'  
north:5014970.370 m east:346847.108 m zone:35T  
Initial pre position (300..tooor)  
0.997 -0.073 0.000 0.000  
0.073 0.997 0.000 0.000  
0.000 0.000 1.000 0.000  
0.000 0.000 0.000 1.000
```

Level system info: dynamic compensator available.









# Scan position '12'

Scan position is member of group(s):

Status registration '[102h] registered with cloud to cloud'

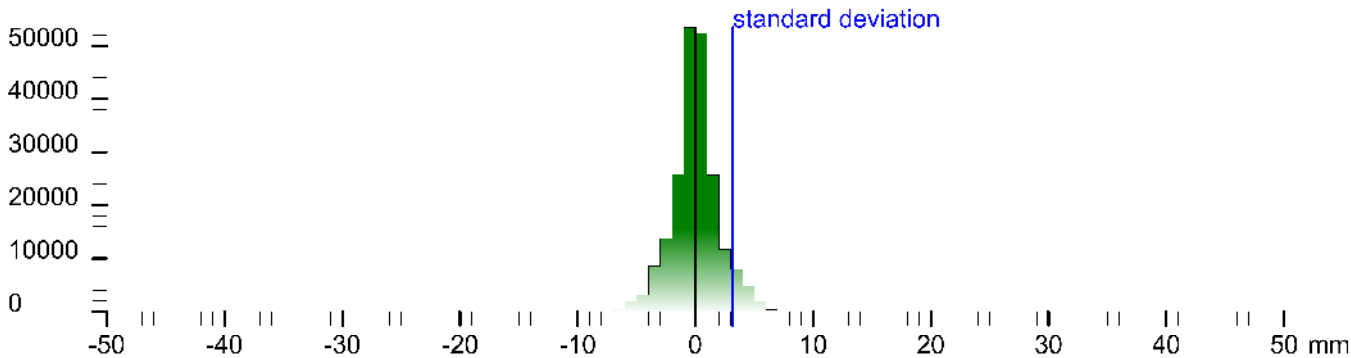
Registration matrix:

```
-0.530216 -0.847863 -0.000502 26.4908 m
0.847863 -0.530216 -0.000975 1.0490 m
0.000560 -0.000943 0.999999 0.0017 m
0.000000 0.000000 0.000000 1.0000
```

Result registration cloud to cloud standard deviation:3.2 mm

## Deviation histogram

Points



## Scan '12'

Scanner 'Z+F IMAGER 5016' serial number '5016-0100' Firmware 9.0.3.6562-0

Scan resolution 'High' quality 'Normal'

**Metadata**    **Value**  
**comment**  
**operator**

```
Scan on name: '12' scan on date: '14-01-2024' scan on time: '12:00:00' scan on location: 'Bldg. 102h' scan on project: 'Bldg. 102h' scan on operator: 'operator' scan on sensor: 'Z+F IMAGER 5016' scan on resolution: 'High' scan on quality: 'Normal'
Sensor
sensors: 3100 *barome or transition rotation gps
Barometer: 0.943165 bar 600.516 m
nav translation: -7.8706 m 3.2733 m 598./921 m accuracies: 8.4089 m 8.4089 m 0.0000 m
nav rotation: 0.0000 0.0000 221.8328 accuracies: 0.0000 0.0000 1s.0000
upside-down: no
GPS lat:45.271600 long:25.046345 satellites:4 height:629.0m hdop:5.9 vdcop:3.2m hacc:5.4-m vacc:13.0 flags:G3's are alone 3D solution'
north:5014968.746 m east:340672.843 m zone:35T
Initial pre position (3-coo. tocoor)
-0.745 -0.667 0.000 23.382°
0.887 -0.7-5 0.000 4.200
0.000 0.000 1.000 4.123
0.000 0.000 0.000 1.000
```

Level system info: dynamic compensator available.



# Scan position '13'

Scan position is member of group(s):

Status registration '[102h] registered with cloud to cloud'

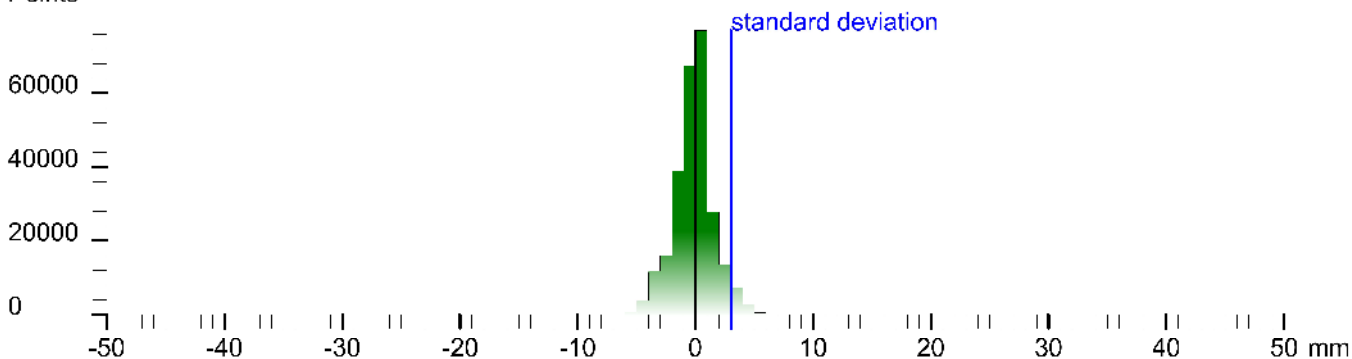
Registration matrix:

```
0.796190 0.605048 0.000253 19.6778 m
-0.605048 0.796190 0.000298 2.7643 m
-0.000021 -0.000390 1.000000 0.0401 m
0.000000 0.000000 0.000000 1.0000
```

Result registration cloud to cloud standard deviation:3.0 mm

## Deviation histogram

Points



## Scan '13'

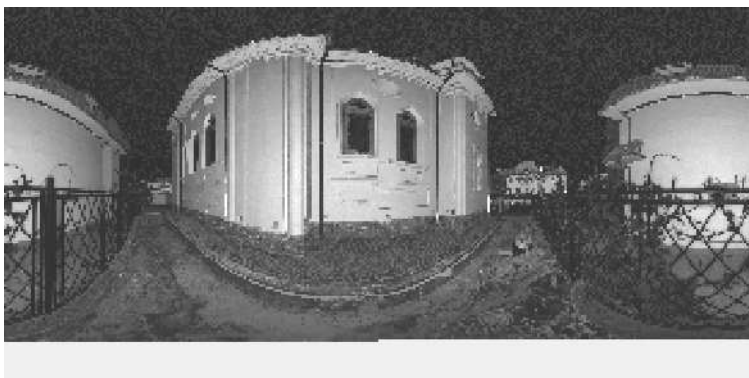
Scanner 'Z+F IMAGER 5016' serial number '5016-0100' Firmware 9.0.3.6562-0

Scan resolution 'High' quality 'Normal'

**Metadata**    **Value**  
**comment**  
**operator**

```
Scan comment: null [102h] registered with cloud to cloud  
Sensor  
sensors: 3100 *barometric transition rotation gps  
Barometer: 0.943246 bar 599.798 m  
nav translation: -12.7173 m 1.1189 m 0.003390 m accuracies: 11.5621 m 11.5621 m 0.0001 m  
nav rotation: 0.0000 0.0000 24.6969 accuracies: 0.0000 0.0000 15.0000  
upside-down: no  
GPS lat:14.5271626 long:25.045273 satellites:4 height:641.1m hdop:3.2 vdcpr:6.6m hacc:21.0m vacc:5.6 flags:G3's airc sbrc 3D solution'  
north:5014972.851 m east:340667.230 m zone:35T  
Initial pre position (3-coo. tocoor):  
0.909 0.418 0.000 10.375  
-0.418 0.909 0.000 5.356  
0.000 0.000 1.000 4.837  
0.000 0.000 0.000 1.000
```

Level system info: dynamic compensator available.







# Scan position '16'

Scan position is member of group(s):

Status registration '[102h] registered with cloud to cloud'

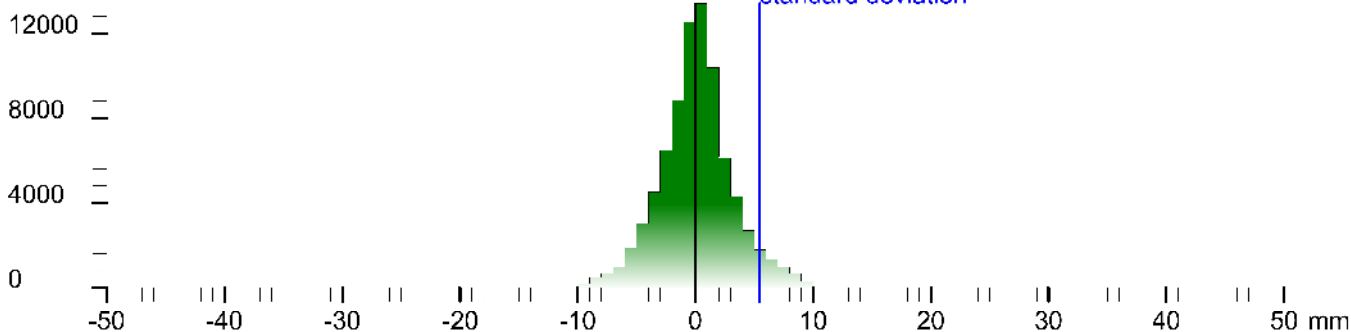
Registration matrix:

```
-0.811687 -0.584093 -0.000641 2.2577 m  
0.584094 -0.811686 -0.001311 20.4584 m  
0.000245 -0.001439 0.999999 -0.0692 m  
0.000000 0.000000 0.000000 1.0000
```

Result registration cloud to cloud standard deviation:5.5 mm

## Deviation histogram

Points



## Scan '16'

Scanner 'Z+F IMAGER 5016' serial number '5016-0100' Firmware 9.0.3.6562-0

Scan resolution 'High' quality 'Normal'

**Metadata**    **Value**  
**comment**  
**operator**

```
Scan comment: null  
Sensor  
sensors: 3100 * barometric transition rotation gps  
Barometer: 0.943273 bar 539.558 m  
nav translation: -1.1558 m 11.5415 m 599.6658 m accuracies: 11.3359 m 11.3359 m 0.0001 m  
nav rotation: 0.0000 0.0000 207.9145 accuracies: 0.0000 0.0000 1s.0000  
upside-down: no  
GPS: lat:45.271675 long:25.045073 satellites:8 height:636.8m hhdop:.1 vdcop:1.5m hacc:4.3-m vacc:5.6 flags:G3 'stand alone 3D solution'  
north:5014988.759 m east:340651.921 m zone:35T  
Initial pre position (3-coo. tocoo):  
-0.888 -0.466 0.000 4.864  
0.480 -0.884 0.000 -3.335  
0.000 0.000 1.000 4.284  
0.000 0.000 0.000 1.000
```

Level system info: dynamic compensator available.













# Scan position '20'

Scan position is member of group(s):

Status registration '[102h] registered with cloud to cloud'

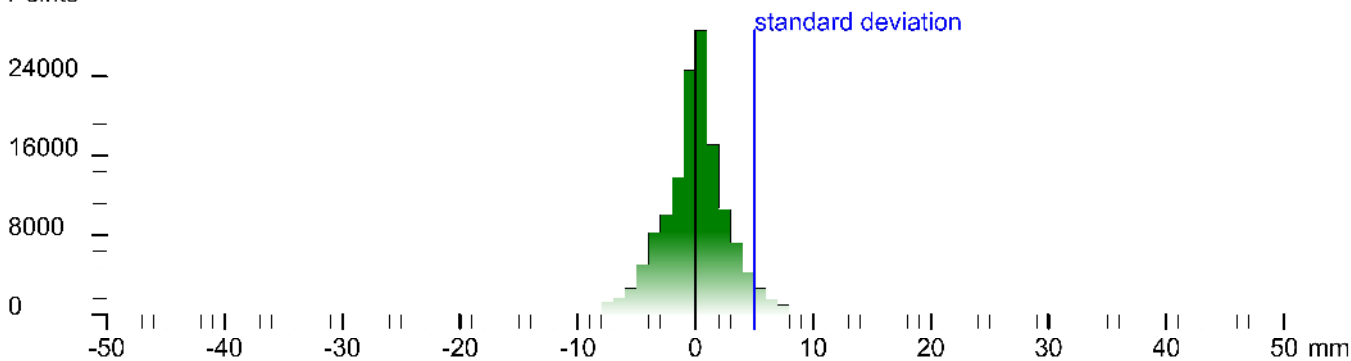
Registration matrix:

```
-0.345912  0.938267  -0.000108  -16.6314 m  
-0.938267  -0.345912  -0.000769   3.4383 m  
-0.000759  -0.000165  1.000000   -0.1294 m  
0.000000  0.000000  0.000000   1.0000
```

Result registration cloud to cloud standard deviation:5.0 mm

## Deviation histogram

Points



## Scan '20'

Scanner 'Z+F IMAGER 5016' serial number '5016-0100' Firmware 9.0.3.6562-0

Scan resolution 'High' quality 'Normal'

**Metadata**    **Value**  
**comment**  
**operator**

```
Scan comment: null  
Sensor  
sensors: 3100 *barome or transition rotation gps  
Barometer: 0.943353 bar 539.85 m  
nav translation: -21.0850 m -32.0430 m 599.3244 m accuracies: 25.5871 m 25.5871 m 0.0000 m  
nav rotation: 0.0000 0.0000 -03.2791 accuracies: 0.0000 0.0000 15.0000  
upside-down: no  
GPS lat:45.271636 long:25.044806 satellites:5 height:634.4m hddow:0.0 vdcop:2.8m hacc:5.3-m vacc:0.0 flags:G3 'stand alone 3D solution'  
north:5014975.011 m east:316630.005 m zone:35T  
Initial pre position (3-coo. tocoor):  
-0.2730 0.973 0.000 -16.449  
0.000 0.000 1.000 3.653  
0.000 0.000 0.000 1.000
```

Level system info: dynamic compensator available.





# Scan position '22'

Scan position is member of group(s):

Status registration '[102h] registered with cloud to cloud'

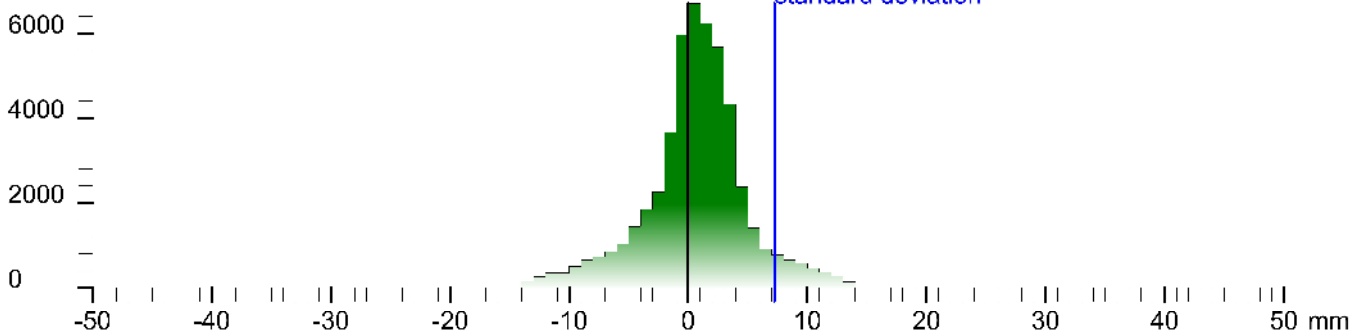
Registration matrix:

```
0.346984 0.937871 -0.000071 -11.5850 m
-0.937871 0.346983 -0.001105 -25.2463 m
-0.001011 0.000450 0.999999 -0.4638 m
0.000000 0.000000 0.000000 1.0000
```

Result registration cloud to cloud standard deviation: 7.2 mm

## Deviation histogram

Points



## Scan '22'

Scanner 'Z+F IMAGER 5016' serial number '5016-0100' Firmware 9.0.3.6562-0

Scan resolution 'High' quality 'Normal'

**Metadata**    **Value**  
**comment**  
**operator**

```
Scan ID: 145271282 | Project: 145271282 | Scan: 22 | Date: 2024-06-18 10:47:47 | Location: 50.149161, 11.151313 | Sensor: Z+F IMAGER 5016
Sensors: 3100 * barometer, transition, rotation, gps
Barometer: 0.943450 bar 537.995 m
nav translation: 6.5779 m -8.9689 m 597.3583 m accuracies: 11.1513 m 11.1513 m 0.0000 m
nav rotation: 0.0000 0.0000 66.7911 accuracies: 0.0000 0.0000 15.0000
upside-down: no
GPS lat: 45.271282 long: 25.044895 satellites: 5 height: 638.0m hddop: .5 vddop: 2.5m hacc: 8.9m vacc: 11.0 tags: G3 'stand alone 3D solution'
Initial pre position (3-coor):
0.394 0.919 0.000 -0.157
-0.919 0.394 0.000 -23.306
0.000 0.000 1.000 1.867
0.000 0.000 0.000 1.000
```

Level system info: dynamic compensator available.















# Scan position '28'

Scan position is member of group(s):

Status registration '[102h] registered with cloud to cloud'

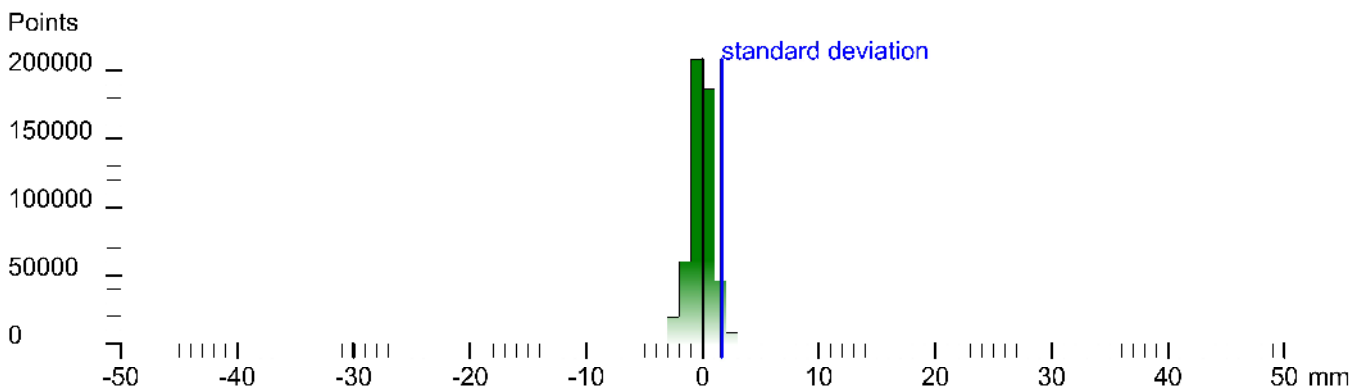
Registration matrix:

```

0.978844  0.204608  0.000237  19.1007 m
-0.204608  0.978844  -0.000234  -5.8589 m
-0.000280  0.000181  1.000000  0.7307 m
0.000000  0.000000  0.000000  1.0000
    
```

Result registration cloud to cloud standard deviation: 1.6 mm

## Deviation histogram



## Scan '28'

Scanner 'Z+F IMAGER 5016' serial number '5016-0100' Firmware 9.0.3.6562-0

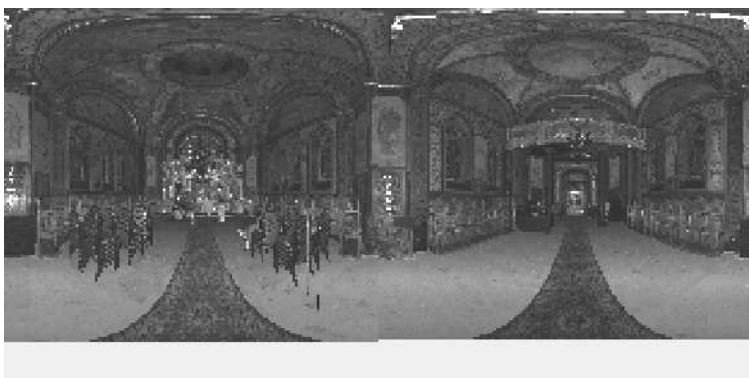
Scan resolution 'High' quality 'Normal'

Metadata	Value
comment	
operator	

```

Scan position: '148' - name: '148' - scan: '28' - type: '28' - description: '28' - comment: '28' - registration: '28' - standard deviation: '1.6' - format: '28' - date: '28'
Sensor
sensors: 3096 *barometric transition rotation*
Barometer: 0.943338 bar 598.985 m
nav translation: 4.3073 m 0.6923 m 598.3349 m accuracies: 7.29°/s m 7.29°/s m 0.0000 m
nav rotation: 0.0000 0.0000 6.967/s accuracies: 0.0000 0.0000 1/s,0000
up/down: no
Initial position (Girdoor)
0.988 0.156 0.000 19.692
-0.156 0.988 0.000 -6.374
0.000 0.000 1.000 2.963
0.000 0.000 0.000 1.000
    
```

Level system info: dynamic compensator available.



















# Scan position '35'

Scan position is member of group(s):

Status registration '[102h] registered with cloud to cloud'

Registration matrix:

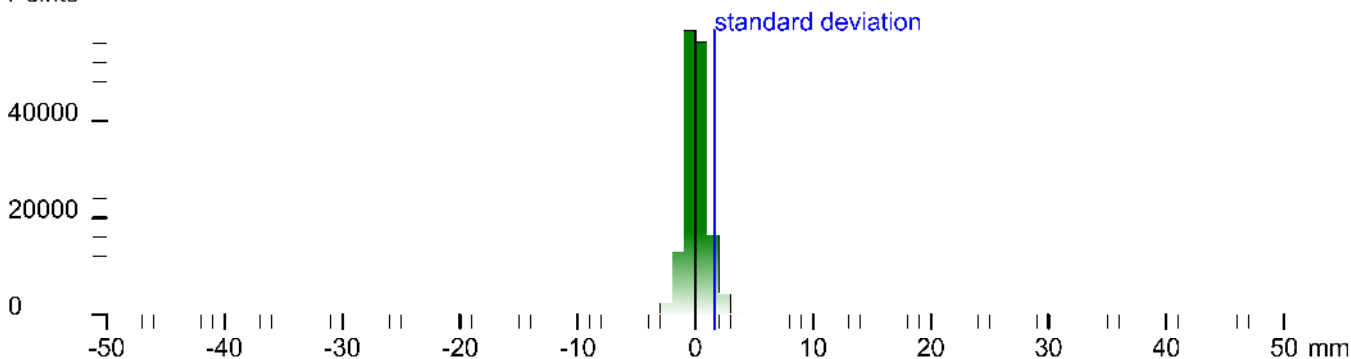
```

0.992140  0.125134  0.000793  32.1905 m
-0.125134 0.992140 -0.000253 -10.6252 m
-0.000818 0.000152 1.000000  0.8901 m
0.000000  0.000000  0.000000  1.0000
    
```

Result registration cloud to cloud standard deviation: 1.6 mm

## Deviation histogram

Points



## Scan '35'

Scanner 'Z+F IMAGER 5016' serial number '5016-0100' Firmware 9.0.3.6562-0

Scan resolution 'High' quality 'Normal'

**Metadata**    **Value**  
**comment**  
**operator**

```

Scan position: '35' - name: '14h:35' - status: '35' - type: '35' - description: '35' - comment: '35' - operator: '35' - scan resolution: 'High' - quality: 'Normal'
Sensor
sensors: 3096 *barometric transition rotation*
Barometer: 0.942141 bar 609.547 m
nav translation: 2.3824 m -0.5079 m 609.5998 m accuracies: 0.3908 m 0.3908 m 0.0000 m
nav rotation: 0.0000 0.0000 6.3378 accuracies: 0.0000 0.0000 1s.0000
upside-down: no
Initial pre position: (0/door)
0.989 0.115 0.000 29.773
-0.140 0.989 0.000 -62.273
0.000 0.000 1.000 14.228
0.000 0.000 0.000 1.000
    
```

Level system info: dynamic compensator available.



# Scan position '36'

Scan position is member of group(s):

Status registration '[102h] registered with cloud to cloud'

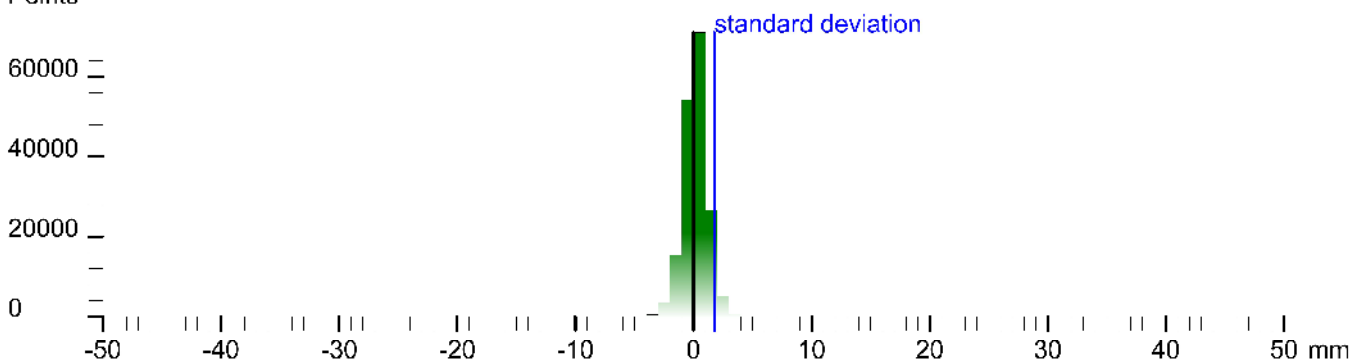
Registration matrix:

```
0.814599 -0.580025 0.000225 30.6070 m
0.580025 0.814599 -0.000207 -7.5336 m
-0.000063 0.000300 1.000000 0.8930 m
0.000000 0.000000 0.000000 1.0000
```

Result registration cloud to cloud standard deviation: 1.8 mm

## Deviation histogram

Points



## Scan '36'

Scanner 'Z+F IMAGER 5016' serial number '5016-0100' Firmware 9.0.3.6562-0

Scan resolution 'High' quality 'Normal'

**Metadata**    **Value**  
**comment**  
**operator**

```
Scan comment: null  
Sensor  
sensors: 3096 *barometric transition rotation*  
Barometer: 0.942055 bar 610.314 m  
nav translation: -3.6304 m 3.2170 m 610.1117 m accuracies: 6.7691 m 6.7691 m 0.0000 m  
nav rotation: 0.0000 0.0000 522.8878 accuracies: 0.0000 0.0000 1s.0000  
upside-down: no  
Initial pre position: (0/door)  
0.797 -0.603 0.000 28.137  
0.603 0.797 0.000 -89.066  
0.000 0.000 1.000 14.740  
0.000 0.000 0.000 1.000
```

Level system info: dynamic compensator available.





# Scan position '38'

Scan position is member of group(s):

Status registration '[102h] registered with cloud to cloud'

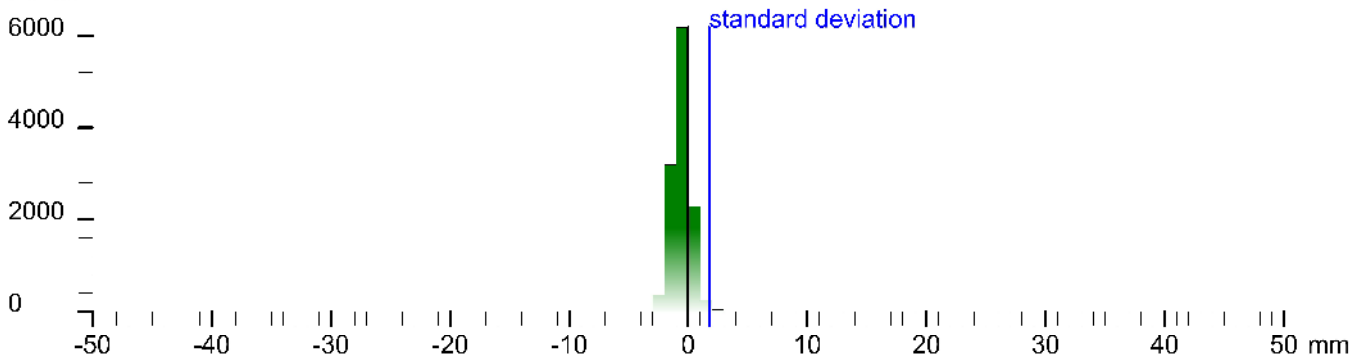
Registration matrix:

```
-0.996588 0.082539 0.000644 9.3012 m  
-0.082540 -0.996586 -0.001659 -6.9967 m  
0.000504 -0.001707 0.999998 1.0441 m  
0.000000 0.000000 0.000000 1.0000
```

Result registration cloud to cloud standard deviation: 1.8 mm

## Deviation histogram

Points



## Scan '38'

Scanner 'Z+F IMAGER 5016' serial number '5016-0100' Firmware 9.0.3.6562-0

Scan resolution 'High' quality 'Normal'

Metadata	Value
comment	
operator	

```
Scan on name: '38' - name: '148-158-168-178-188-198-208-218-228-238-248-258-268-278-288-298-308-318-328-338-348-358-368-378-388-398-408-418-428-438-448-458-468-478-488-498-508-518-528-538-548-558-568-578-588-598-608-618-628-638-648-658-668-678-688-698-708-718-728-738-748-758-768-778-788-798-808-818-828-838-848-858-868-878-888-898-908-918-928-938-948-958-968-978-988-998-1008-1018-1028-1038-1048-1058-1068-1078-1088-1098-1108-1118-1128-1138-1148-1158-1168-1178-1188-1198-1208-1218-1228-1238-1248-1258-1268-1278-1288-1298-1308-1318-1328-1338-1348-1358-1368-1378-1388-1398-1408-1418-1428-1438-1448-1458-1468-1478-1488-1498-1508-1518-1528-1538-1548-1558-1568-1578-1588-1598-1608-1618-1628-1638-1648-1658-1668-1678-1688-1698-1708-1718-1728-1738-1748-1758-1768-1778-1788-1798-1808-1818-1828-1838-1848-1858-1868-1878-1888-1898-1908-1918-1928-1938-1948-1958-1968-1978-1988-1998-2008-2018-2028-2038-2048-2058-2068-2078-2088-2098-2108-2118-2128-2138-2148-2158-2168-2178-2188-2198-2208-2218-2228-2238-2248-2258-2268-2278-2288-2298-2308-2318-2328-2338-2348-2358-2368-2378-2388-2398-2408-2418-2428-2438-2448-2458-2468-2478-2488-2498-2508-2518-2528-2538-2548-2558-2568-2578-2588-2598-2608-2618-2628-2638-2648-2658-2668-2678-2688-2698-2708-2718-2728-2738-2748-2758-2768-2778-2788-2798-2808-2818-2828-2838-2848-2858-2868-2878-2888-2898-2908-2918-2928-2938-2948-2958-2968-2978-2988-2998-3008-3018-3028-3038-3048-3058-3068-3078-3088-3098-3108-3118-3128-3138-3148-3158-3168-3178-3188-3198-3208-3218-3228-3238-3248-3258-3268-3278-3288-3298-3308-3318-3328-3338-3348-3358-3368-3378-3388-3398-3408-3418-3428-3438-3448-3458-3468-3478-3488-3498-3508-3518-3528-3538-3548-3558-3568-3578-3588-3598-3608-3618-3628-3638-3648-3658-3668-3678-3688-3698-3708-3718-3728-3738-3748-3758-3768-3778-3788-3798-3808-3818-3828-3838-3848-3858-3868-3878-3888-3898-3908-3918-3928-3938-3948-3958-3968-3978-3988-3998-4008-4018-4028-4038-4048-4058-4068-4078-4088-4098-4108-4118-4128-4138-4148-4158-4168-4178-4188-4198-4208-4218-4228-4238-4248-4258-4268-4278-4288-4298-4308-4318-4328-4338-4348-4358-4368-4378-4388-4398-4408-4418-4428-4438-4448-4458-4468-4478-4488-4498-4508-4518-4528-4538-4548-4558-4568-4578-4588-4598-4608-4618-4628-4638-4648-4658-4668-4678-4688-4698-4708-4718-4728-4738-4748-4758-4768-4778-4788-4798-4808-4818-4828-4838-4848-4858-4868-4878-4888-4898-4908-4918-4928-4938-4948-4958-4968-4978-4988-4998-5008-5018-5028-5038-5048-5058-5068-5078-5088-5098-5108-5118-5128-5138-5148-5158-5168-5178-5188-5198-5208-5218-5228-5238-5248-5258-5268-5278-5288-5298-5308-5318-5328-5338-5348-5358-5368-5378-5388-5398-5408-5418-5428-5438-5448-5458-5468-5478-5488-5498-5508-5518-5528-5538-5548-5558-5568-5578-5588-5598-5608-5618-5628-5638-5648-5658-5668-5678-5688-5698-5708-5718-5728-5738-5748-5758-5768-5778-5788-5798-5808-5818-5828-5838-5848-5858-5868-5878-5888-5898-5908-5918-5928-5938-5948-5958-5968-5978-5988-5998-6008-6018-6028-6038-6048-6058-6068-6078-6088-6098-6108-6118-6128-6138-6148-6158-6168-6178-6188-6198-6208-6218-6228-6238-6248-6258-6268-6278-6288-6298-6308-6318-6328-6338-6348-6358-6368-6378-6388-6398-6408-6418-6428-6438-6448-6458-6468-6478-6488-6498-6508-6518-6528-6538-6548-6558-6568-6578-6588-6598-6608-6618-6628-6638-6648-6658-6668-6678-6688-6698-6708-6718-6728-6738-6748-6758-6768-6778-6788-6798-6808-6818-6828-6838-6848-6858-6868-6878-6888-6898-6908-6918-6928-6938-6948-6958-6968-6978-6988-6998-7008-7018-7028-7038-7048-7058-7068-7078-7088-7098-7108-7118-7128-7138-7148-7158-7168-7178-7188-7198-7208-7218-7228-7238-7248-7258-7268-7278-7288-7298-7308-7318-7328-7338-7348-7358-7368-7378-7388-7398-7408-7418-7428-7438-7448-7458-7468-7478-7488-7498-7508-7518-7528-7538-7548-7558-7568-7578-7588-7598-7608-7618-7628-7638-7648-7658-7668-7678-7688-7698-7708-7718-7728-7738-7748-7758-7768-7778-7788-7798-7808-7818-7828-7838-7848-7858-7868-7878-7888-7898-7908-7918-7928-7938-7948-7958-7968-7978-7988-7998-8008-8018-8028-8038-8048-8058-8068-8078-8088-8098-8108-8118-8128-8138-8148-8158-8168-8178-8188-8198-8208-8218-8228-8238-8248-8258-8268-8278-8288-8298-8308-8318-8328-8338-8348-8358-8368-8378-8388-8398-8408-8418-8428-8438-8448-8458-8468-8478-8488-8498-8508-8518-8528-8538-8548-8558-8568-8578-8588-8598-8608-8618-8628-8638-8648-8658-8668-8678-8688-8698-8708-8718-8728-8738-8748-8758-8768-8778-8788-8798-8808-8818-8828-8838-8848-8858-8868-8878-8888-8898-8908-8918-8928-8938-8948-8958-8968-8978-8988-8998-9008-9018-9028-9038-9048-9058-9068-9078-9088-9098-9108-9118-9128-9138-9148-9158-9168-9178-9188-9198-9208-9218-9228-9238-9248-9258-9268-9278-9288-9298-9308-9318-9328-9338-9348-9358-9368-9378-9388-9398-9408-9418-9428-9438-9448-9458-9468-9478-9488-9498-9508-9518-9528-9538-9548-9558-9568-9578-9588-9598-9608-9618-9628-9638-9648-9658-9668-9678-9688-9698-9708-9718-9728-9738-9748-9758-9768-9778-9788-9798-9808-9818-9828-9838-9848-9858-9868-9878-9888-9898-9908-9918-9928-9938-9948-9958-9968-9978-9988-9998-10008-10018-10028-10038-10048-10058-10068-10078-10088-10098-10108-10118-10128-10138-10148-10158-10168-10178-10188-10198-10208-10218-10228-10238-10248-10258-10268-10278-10288-10298-10308-10318-10328-10338-10348-10358-10368-10378-10388-10398-10408-10418-10428-10438-10448-10458-10468-10478-10488-10498-10508-10518-10528-10538-10548-10558-10568-10578-10588-10598-10608-10618-10628-10638-10648-10658-10668-10678-10688-10698-10708-10718-10728-10738-10748-10758-10768-10778-10788-10798-10808-10818-10828-10838-10848-10858-10868-10878-10888-10898-10908-10918-10928-10938-10948-10958-10968-10978-10988-10998-11008-11018-11028-11038-11048-11058-11068-11078-11088-11098-11108-11118-11128-11138-11148-11158-11168-11178-11188-11198-11208-11218-11228-11238-11248-11258-11268-11278-11288-11298-11308-11318-11328-11338-11348-11358-11368-11378-11388-11398-11408-11418-11428-11438-11448-11458-11468-11478-11488-11498-11508-11518-11528-11538-11548-11558-11568-11578-11588-11598-11608-11618-11628-11638-11648-11658-11668-11678-11688-11698-11708-11718-11728-11738-11748-11758-11768-11778-11788-11798-11808-11818-11828-11838-11848-11858-11868-11878-11888-11898-11908-11918-11928-11938-11948-11958-11968-11978-11988-11998-12008-12018-12028-12038-12048-12058-12068-12078-12088-12098-12108-12118-12128-12138-12148-12158-12168-12178-12188-12198-12208-12218-12228-12238-12248-12258-12268-12278-12288-12298-12308-12318-12328-12338-12348-12358-12368-12378-12388-12398-12408-12418-12428-12438-12448-12458-12468-12478-12488-12498-12508-12518-12528-12538-12548-12558-12568-12578-12588-12598-12608-12618-12628-12638-12648-12658-12668-12678-12688-12698-12708-12718-12728-12738-12748-12758-12768-12778-12788-12798-12808-12818-12828-12838-12848-12858-12868-12878-12888-12898-12908-12918-12928-12938-12948-12958-12968-12978-12988-12998-13008-13018-13028-13038-13048-13058-13068-13078-13088-13098-13108-13118-13128-13138-13148-13158-13168-13178-13188-13198-13208-13218-13228-13238-13248-13258-13268-13278-13288-13298-13308-13318-13328-13338-13348-13358-13368-13378-13388-13398-13408-13418-13428-13438-13448-13458-13468-13478-13488-13498-13508-13518-13528-13538-13548-13558-13568-13578-13588-13598-13608-13618-13628-13638-13648-13658-13668-13678-13688-13698-13708-13718-13728-13738-13748-13758-13768-13778-13788-13798-13808-13818-13828-13838-13848-13858-13868-13878-13888-13898-13908-13918-13928-13938-13948-13958-13968-13978-13988-13998-14008-14018-14028-14038-14048-14058-14068-14078-14088-14098-14108-14118-14128-14138-14148-14158-14168-14178-14188-14198-14208-14218-14228-14238-14248-14258-14268-14278-14288-14298-14308-14318-14328-14338-14348-14358-14368-14378-14388-14398-14408-14418-14428-14438-14448-14458-14468-14478-14488-14498-14508-14518-14528-14538-14548-14558-14568-14578-14588-14598-14608-14618-14628-14638-14648-14658-14668-14678-14688-14698-14708-14718-14728-14738-14748-14758-14768-14778-14788-14798-14808-14818-14828-14838-14848-14858-14868-14878-14888-14898-14908-14918-14928-14938-14948-14958-14968-14978-14988-14998-15008-15018-15028-15038-15048-15058-15068-15078-15088-15098-15108-15118-15128-15138-15148-15158-15168-15178-15188-15198-15208-15218-15228-15238-15248-15258-15268-15278-15288-15298-15308-15318-15328-15338-15348-15358-15368-15378-15388-15398-15408-15418-15428-15438-15448-15458-15468-15478-15488-15498-15508-15518-15528-15538-15548-15558-15568-15578-15588-15598-15608-15618-15628-15638-15648-15658-15668-15678-15688-15698-15708-15718-15728-15738-15748-15758-15768-15778-15788-15798-15808-15818-15828-15838-15848-15858-15868-15878-15888-15898-15908-15918-15928-15938-15948-15958-15968-15978-15988-15998-16008-16018-16028-16038-16048-16058-16068-16078-16088-16098-16108-16118-16128-16138-16148-16158-16168-16178-16188-16198-16208-16218-16228-16238-16248-16258-16268-16278-16288-16298-16308-16318-16328-16338-16348-16358-16368-16378-16388-16398-16408-16418-16428-16438-16448-16458-16468-16478-16488-16498-16508-16518-16528-16538-16548-16558-16568-16578-16588-16598-16608-16618-16628-16638-16648-16658-16668-16678-16688-16698-16708-16718-16728-16738-16748-16758-16768-16778-16788-16798-16808-16818-16828-16838-16848-16858-16868-16878-16888-16898-16908-16918-16928-16938-16948-16958-16968-16978-16988-16998-17008-17018-17028-17038-17048-17058-17068-17078-17088-17098-17108-17118-17128-17138-17148-17158-17168-17178-17188-17198-17208-17218-17228-17238-17248-17258-17268-17278-17288-17298-17308-17318-17328-17338-17348-17358-17368-17378-17388-17398-17408-17418-17428-17438-17448-17458-17468-17478-17488-17498-17508-17518-17528-17538-17548-17558-17568-17578-17588-17598-17608-17618-17628-17638-17648-17658-17668-17678-17688-17698-17708-17718-17728-17738-17748-17758-17768-17778-17788-17798-17808-17818-17828-17838-17848-17858-17868-17878-17888-17898-17908-17918-17928-17938-17948-17958-17968-17978-17988-17998-18008-18018-18028-18038-18048-18058-18068-18078-18088-18098-18108-18118-18128-18138-18148-18158-18168-18178-18188-18198-18208-18218-18228-18238-18248-18258-18268-18278-18288-18298-18308-18318-18328-18338-18348-18358-18368-18378-18388-18398-18408-18418-18428-18438-18448-18458-18468-18478-18488-18498-18508-18518-18528-18538-18548-18558-18568-18578-18588-18598-18608-18618-18628-18638-18648-18658-18668-18678-18688-18698-18708-18718-18728-18738-18748-18758-18768-18778-18788-18798-18808-18818-18828-18838-18848-18858-18868-18878-18888-18898-18908-18918-18928-18938-18948-18958-18968-18978-18988-18998-19008-19018-19028-19038-19048-19058-19068-19078-19088-19098-19108-19118-19128-19138-19148-19158-19168-19178-19188-19198-19208-19218-19228-19238-19248-19258-19268-19278-19288-19298-19308-19318-19328-19338-19348-19358-19368-19378-19388-19398-19408-19418-19428-19438-19448-19458-19468-19478-19488-19498-19508-19518-19528-19538-19548-19558-19568-19578-19588-19598-19608-19618-19628-19638-19648-19658-19668-19678-19688-19698-19708-19718-19728-19738-19748-19758-19768-19778-19788-19798-19808-19818-19828-19838-19848-19858-19868-19878-19888-19898-19908-19918-19928-19938-19948-19958-19968-19978-19988-19998-20008-20018-20028-20038-20048-20058-20068-20078-20088-20098-20108-20118-20128-20138-20148-20158-20168-20178-20188-20198-20208-20218-20228-20238-20248-20258-20268-20278-20288-20298-20308-20318-20328-20338-20348-20358-20368-20378-20388-20398-20408-20418-20428-20438-20448-20458-20468-20478-20488-20498-20508-20518-20528-20538-20548-20558-20568-20578-20588-20598-20608-20618-20628-20638-20648-20658-20668-20678-20688-20698-20708-20718-20728-20738-20748-20758-20768-20778-20788-20798-20808-20818-20828-20838-20848-20858-20868-20878-20888-20898-20908-20918-20928-20938-20948-20958-20968-20978-20988-20998-21008-21018-21028-21038-21048-21058-21068-21078-21088-21098-21108-21118-21128-21138-2114
```















# Scan position '44'

Scan position is member of group(s):

Status registration '[102h] registered with cloud to cloud'

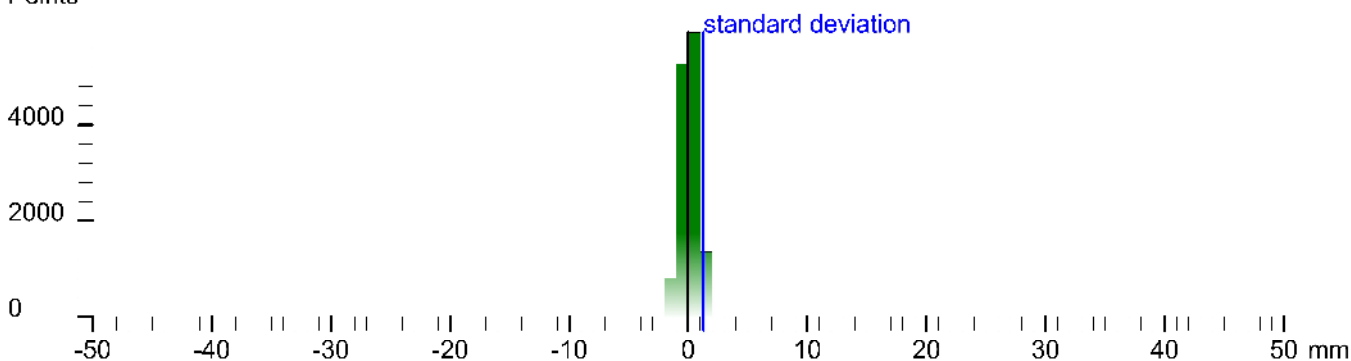
Registration matrix:

```
0.979718 -0.200386 -0.000234 10.8167 m
0.200386 0.979717 0.000423 -7.3950 m
0.000146 -0.000461 0.999999 4.7472 m
0.000000 0.000000 0.000000 1.0000
```

Result registration cloud to cloud standard deviation: 1.3 mm

## Deviation histogram

Points



## Scan '44'

Scanner 'Z+F IMAGER 5016' serial number '5016-0100' Firmware 9.0.3.6562-0

Scan resolution 'High' quality 'Normal'

Metadata	Value
comment	
operator	

```
Scan comment: null
Sensor
sensors: 3096 *barome or transition rotation*
Barometer: 0.947484 bar 582.478 m
nav translation: 0.6808 m 0.7668 m 502.355 m accuracies: 5.63/7 m 5.63/7 m 0.0002 m
nav rotation: 0.0000 0.0000 0.0000 0.0000 accuracies: 0.0000 0.0000 1s.0000
upside-down: no
Initial pre position: (0 indoor)
0.981 -0.195 0.000 28.188
0.195 0.981 0.000 -67.393
0.000 0.000 1.000 -32.936
0.000 0.000 0.000 1.000
```

Level system info: dynamic compensator available.





# Scan position '46'

Scan position is member of group(s):

Status registration '[102h] registered with cloud to cloud'

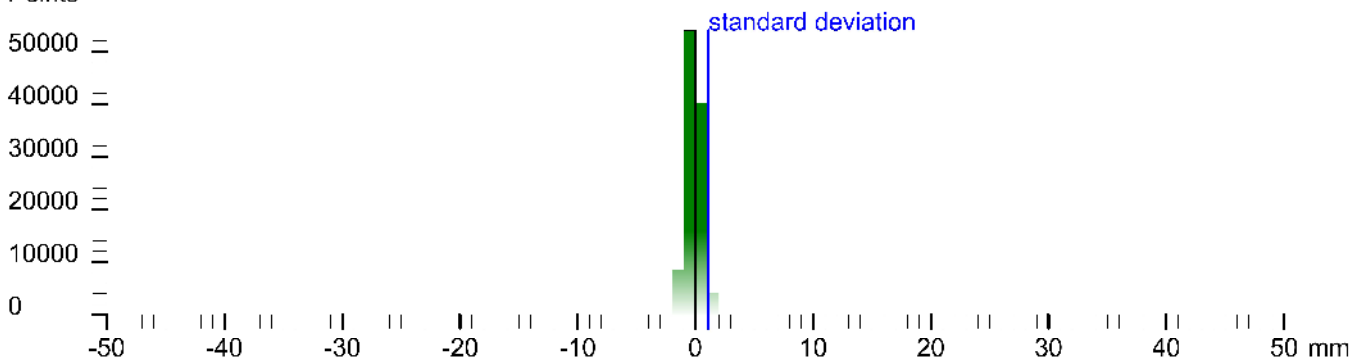
Registration matrix:

```
0.809033 -0.587764 -0.000770 10.6589 m
0.587765 0.809031 0.001340 -3.4870 m
-0.000164 -0.001536 0.999998 5.4492 m
0.000000 0.000000 0.000000 1.0000
```

Result registration cloud to cloud standard deviation: 1.1 mm

## Deviation histogram

Points



## Scan '46'

Scanner 'Z+F IMAGER 5016' serial number '5016-0100' Firmware 9.0.3.6562-0

Scan resolution 'High' quality 'Normal'

Metadata	Value
comment	
operator	

```
Sensor: 3096 *barometric transition rotation*
Barometer: 0.947527 bar 582.1 m
nav translation: 2.6376 m 1.7425 m 501.7867 m accuracies: 6.7722 m 6.7722 m 0.0000 m
nav rotation: 0.0000 0.0000 0.0000 accuracies: 0.0000 0.0000 1s.0000
upside-down: no
Initial pre position: (Girdoor)
0.619 -0.529 0.000 -33.502
0.629 0.848 0.000 -4.190
0.000 0.000 1.000 -33.585
0.000 0.000 0.000 1.000
```

Level system info: dynamic compensator available.



# Scan position '47'

Scan position is member of group(s):

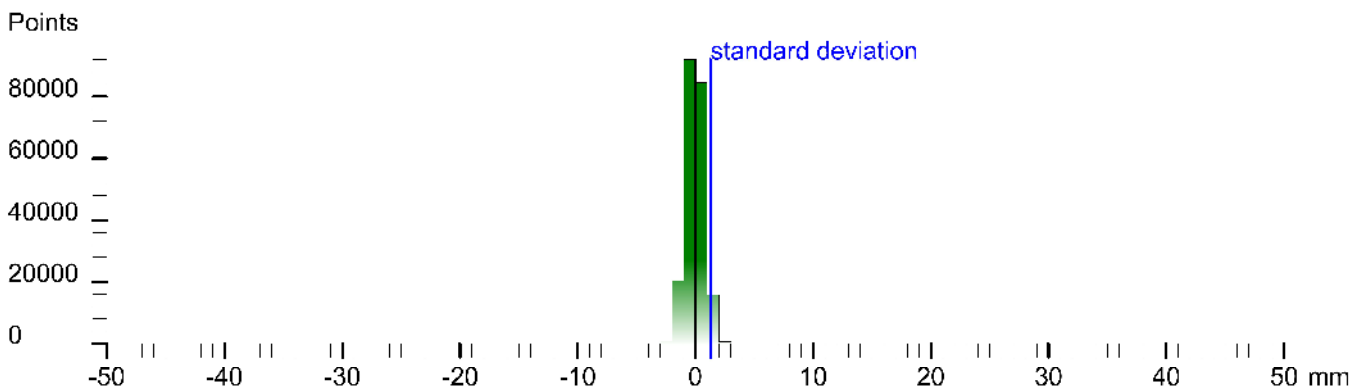
Status registration '[102h] registered with cloud to cloud'

Registration matrix:

```
-0.036093  0.999349  0.000522  13.7416 m  
-0.999348 -0.036093  0.000939  -2.7305 m  
0.000956 -0.000487  0.999999  5.4738 m  
0.000000  0.000000  0.000000  1.0000
```

Result registration cloud to cloud standard deviation: 1.3 mm

## Deviation histogram



## Scan '47'

Scanner 'Z+F IMAGER 5016' serial number '5016-0100' Firmware 9.0.3.6562-0

Scan resolution 'High' quality 'Normal'

**Metadata**    **Value**  
**comment**  
**operator**

```
Scan comment: full 1.908x0.303 m scan: 1.48x1.47 m scan: 47 points [B:0.000000] [R:0.000000] [S:0.000000] [C:0.000000] [M:0.000000] [D:0.000000] [E:0.000000] [F:0.000000] [G:0.000000] [H:0.000000] [I:0.000000] [J:0.000000] [K:0.000000] [L:0.000000] [M:0.000000] [N:0.000000] [O:0.000000] [P:0.000000] [Q:0.000000] [R:0.000000] [S:0.000000] [T:0.000000] [U:0.000000] [V:0.000000] [W:0.000000] [X:0.000000] [Y:0.000000] [Z:0.000000] [AA:0.000000] [AB:0.000000] [AC:0.000000] [AD:0.000000] [AE:0.000000] [AF:0.000000] [AG:0.000000] [AH:0.000000] [AI:0.000000] [AJ:0.000000] [AK:0.000000] [AL:0.000000] [AM:0.000000] [AN:0.000000] [AO:0.000000] [AP:0.000000] [AQ:0.000000] [AR:0.000000] [AS:0.000000] [AT:0.000000] [AU:0.000000] [AV:0.000000] [AW:0.000000] [AX:0.000000] [AY:0.000000] [AZ:0.000000] [BA:0.000000] [BB:0.000000] [BC:0.000000] [BD:0.000000] [BE:0.000000] [BF:0.000000] [BG:0.000000] [BH:0.000000] [BI:0.000000] [BJ:0.000000] [BK:0.000000] [BL:0.000000] [BM:0.000000] [BN:0.000000] [BO:0.000000] [BP:0.000000] [BQ:0.000000] [BR:0.000000] [BS:0.000000] [BT:0.000000] [BU:0.000000] [BV:0.000000] [BW:0.000000] [BX:0.000000] [BY:0.000000] [BZ:0.000000] [CA:0.000000] [CB:0.000000] [CC:0.000000] [CD:0.000000] [CE:0.000000] [CF:0.000000] [CG:0.000000] [CH:0.000000] [CI:0.000000] [CJ:0.000000] [CK:0.000000] [CL:0.000000] [CM:0.000000] [CN:0.000000] [CO:0.000000] [CP:0.000000] [CQ:0.000000] [CR:0.000000] [CS:0.000000] [CT:0.000000] [CU:0.000000] [CV:0.000000] [CW:0.000000] [CX:0.000000] [CY:0.000000] [CZ:0.000000] [DA:0.000000] [DB:0.000000] [DC:0.000000] [DD:0.000000] [DE:0.000000] [DF:0.000000] [DG:0.000000] [DH:0.000000] [DI:0.000000] [DJ:0.000000] [DK:0.000000] [DL:0.000000] [DM:0.000000] [DN:0.000000] [DO:0.000000] [DP:0.000000] [DQ:0.000000] [DR:0.000000] [DS:0.000000] [DT:0.000000] [DU:0.000000] [DV:0.000000] [DW:0.000000] [DX:0.000000] [DY:0.000000] [DZ:0.000000] [EA:0.000000] [EB:0.000000] [EC:0.000000] [ED:0.000000] [EE:0.000000] [EF:0.000000] [EG:0.000000] [EH:0.000000] [EI:0.000000] [EJ:0.000000] [EK:0.000000] [EL:0.000000] [EM:0.000000] [EN:0.000000] [EO:0.000000] [EP:0.000000] [EQ:0.000000] [ER:0.000000] [ES:0.000000] [ET:0.000000] [EU:0.000000] [EV:0.000000] [EW:0.000000] [EX:0.000000] [EY:0.000000] [EZ:0.000000] [FA:0.000000] [FB:0.000000] [FC:0.000000] [FD:0.000000] [FE:0.000000] [FF:0.000000] [FG:0.000000] [FH:0.000000] [FI:0.000000] [FJ:0.000000] [FK:0.000000] [FL:0.000000] [FM:0.000000] [FN:0.000000] [FO:0.000000] [FP:0.000000] [FQ:0.000000] [FR:0.000000] [FS:0.000000] [FT:0.000000] [FU:0.000000] [FV:0.000000] [FW:0.000000] [FX:0.000000] [FY:0.000000] [FZ:0.000000] [GA:0.000000] [GB:0.000000] [GC:0.000000] [GD:0.000000] [GE:0.000000] [GF:0.000000] [GG:0.000000] [GH:0.000000] [GI:0.000000] [GJ:0.000000] [GK:0.000000] [GL:0.000000] [GM:0.000000] [GN:0.000000] [GO:0.000000] [GP:0.000000] [GQ:0.000000] [GR:0.000000] [GS:0.000000] [GT:0.000000] [GU:0.000000] [GV:0.000000] [GW:0.000000] [GX:0.000000] [GY:0.000000] [GZ:0.000000] [HA:0.000000] [HB:0.000000] [HC:0.000000] [HD:0.000000] [HE:0.000000] [HF:0.000000] [HG:0.000000] [HH:0.000000] [HI:0.000000] [HJ:0.000000] [HK:0.000000] [HL:0.000000] [HM:0.000000] [HN:0.000000] [HO:0.000000] [HP:0.000000] [HQ:0.000000] [HR:0.000000] [HS:0.000000] [HT:0.000000] [HU:0.000000] [HV:0.000000] [HW:0.000000] [HX:0.000000] [HY:0.000000] [HZ:0.000000] [IA:0.000000] [IB:0.000000] [IC:0.000000] [ID:0.000000] [IE:0.000000] [IF:0.000000] [IG:0.000000] [IH:0.000000] [II:0.000000] [IJ:0.000000] [IK:0.000000] [IL:0.000000] [IM:0.000000] [IN:0.000000] [IO:0.000000] [IP:0.000000] [IQ:0.000000] [IR:0.000000] [IS:0.000000] [IT:0.000000] [IU:0.000000] [IV:0.000000] [IW:0.000000] [IX:0.000000] [IY:0.000000] [IZ:0.000000] [JA:0.000000] [JB:0.000000] [JC:0.000000] [JD:0.000000] [JE:0.000000] [JF:0.000000] [JG:0.000000] [JH:0.000000] [JI:0.000000] [JJ:0.000000] [JK:0.000000] [JL:0.000000] [JM:0.000000] [JN:0.000000] [JO:0.000000] [JP:0.000000] [JQ:0.000000] [JR:0.000000] [JS:0.000000] [JT:0.000000] [JU:0.000000] [JV:0.000000] [JW:0.000000] [JX:0.000000] [JY:0.000000] [JZ:0.000000] [KA:0.000000] [KB:0.000000] [KC:0.000000] [KD:0.000000] [KE:0.000000] [KF:0.000000] [KG:0.000000] [KH:0.000000] [KI:0.000000] [KJ:0.000000] [KK:0.000000] [KL:0.000000] [KM:0.000000] [KN:0.000000] [KO:0.000000] [KP:0.000000] [KQ:0.000000] [KR:0.000000] [KS:0.000000] [KT:0.000000] [KU:0.000000] [KV:0.000000] [KW:0.000000] [KX:0.000000] [KY:0.000000] [KZ:0.000000] [LA:0.000000] [LB:0.000000] [LC:0.000000] [LD:0.000000] [LE:0.000000] [LF:0.000000] [LG:0.000000] [LH:0.000000] [LI:0.000000] [LJ:0.000000] [LK:0.000000] [LL:0.000000] [LM:0.000000] [LN:0.000000] [LO:0.000000] [LP:0.000000] [LQ:0.000000] [LR:0.000000] [LS:0.000000] [LT:0.000000] [LU:0.000000] [LV:0.000000] [LW:0.000000] [LX:0.000000] [LY:0.000000] [LZ:0.000000] [MA:0.000000] [MB:0.000000] [MC:0.000000] [MD:0.000000] [ME:0.000000] [MF:0.000000] [MG:0.000000] [MH:0.000000] [MI:0.000000] [MJ:0.000000] [MK:0.000000] [ML:0.000000] [MN:0.000000] [MO:0.000000] [MP:0.000000] [MQ:0.000000] [MR:0.000000] [MS:0.000000] [MT:0.000000] [MU:0.000000] [MV:0.000000] [MW:0.000000] [MX:0.000000] [MY:0.000000] [MZ:0.000000] [NA:0.000000] [NB:0.000000] [NC:0.000000] [ND:0.000000] [NE:0.000000] [NF:0.000000] [NG:0.000000] [NH:0.000000] [NI:0.000000] [NJ:0.000000] [NK:0.000000] [NL:0.000000] [NM:0.000000] [NO:0.000000] [NP:0.000000] [NQ:0.000000] [NR:0.000000] [NS:0.000000] [NT:0.000000] [NU:0.000000] [NV:0.000000] [NW:0.000000] [NX:0.000000] [NY:0.000000] [NZ:0.000000] [OA:0.000000] [OB:0.000000] [OC:0.000000] [OD:0.000000] [OE:0.000000] [OF:0.000000] [OG:0.000000] [OH:0.000000] [OI:0.000000] [OJ:0.000000] [OK:0.000000] [OL:0.000000] [OM:0.000000] [ON:0.000000] [OO:0.000000] [OP:0.000000] [OQ:0.000000] [OR:0.000000] [OS:0.000000] [OT:0.000000] [OU:0.000000] [OV:0.000000] [OW:0.000000] [OX:0.000000] [OY:0.000000] [OZ:0.000000] [PA:0.000000] [PB:0.000000] [PC:0.000000] [PD:0.000000] [PE:0.000000] [PF:0.000000] [PG:0.000000] [PH:0.000000] [PI:0.000000] [PJ:0.000000] [PK:0.000000] [PL:0.000000] [PM:0.000000] [PN:0.000000] [PO:0.000000] [PP:0.000000] [PQ:0.000000] [PR:0.000000] [PS:0.000000] [PT:0.000000] [PU:0.000000] [PV:0.000000] [PW:0.000000] [PX:0.000000] [PY:0.000000] [PZ:0.000000] [QA:0.000000] [QB:0.000000] [QC:0.000000] [QD:0.000000] [QE:0.000000] [QF:0.000000] [QG:0.000000] [QH:0.000000] [QI:0.000000] [QJ:0.000000] [QK:0.000000] [QL:0.000000] [QM:0.000000] [QN:0.000000] [QO:0.000000] [QP:0.000000] [QQ:0.000000] [QR:0.000000] [QS:0.000000] [QT:0.000000] [QU:0.000000] [QV:0.000000] [QW:0.000000] [QX:0.000000] [QY:0.000000] [QZ:0.000000] [RA:0.000000] [RB:0.000000] [RC:0.000000] [RD:0.000000] [RE:0.000000] [RF:0.000000] [RG:0.000000] [RH:0.000000] [RI:0.000000] [RJ:0.000000] [RK:0.000000] [RL:0.000000] [RM:0.000000] [RN:0.000000] [RO:0.000000] [RP:0.000000] [RQ:0.000000] [RR:0.000000] [RS:0.000000] [RT:0.000000] [RU:0.000000] [RV:0.000000] [RW:0.000000] [RX:0.000000] [RY:0.000000] [RZ:0.000000] [SA:0.000000] [SB:0.000000] [SC:0.000000] [SD:0.000000] [SE:0.000000] [SF:0.000000] [SG:0.000000] [SH:0.000000] [SI:0.000000] [SJ:0.000000] [SK:0.000000] [SL:0.000000] [SM:0.000000] [SN:0.000000] [SO:0.000000] [SP:0.000000] [SQ:0.000000] [SR:0.000000] [SS:0.000000] [ST:0.000000] [SU:0.000000] [SV:0.000000] [SW:0.000000] [SX:0.000000] [SY:0.000000] [SZ:0.000000] [TA:0.000000] [TB:0.000000] [TC:0.000000] [TD:0.000000] [TE:0.000000] [TF:0.000000] [TG:0.000000] [TH:0.000000] [TI:0.000000] [TJ:0.000000] [TK:0.000000] [TL:0.000000] [TM:0.000000] [TN:0.000000] [TO:0.000000] [TP:0.000000] [TQ:0.000000] [TR:0.000000] [TS:0.000000] [TT:0.000000] [TU:0.000000] [TV:0.000000] [TW:0.000000] [TX:0.000000] [TY:0.000000] [TZ:0.000000] [UA:0.000000] [UB:0.000000] [UC:0.000000] [UD:0.000000] [UE:0.000000] [UF:0.000000] [UG:0.000000] [UH:0.000000] [UI:0.000000] [UJ:0.000000] [UK:0.000000] [UL:0.000000] [UM:0.000000] [UN:0.000000] [UO:0.000000] [UP:0.000000] [UQ:0.000000] [UR:0.000000] [US:0.000000] [UT:0.000000] [UU:0.000000] [UV:0.000000] [UW:0.000000] [UX:0.000000] [UY:0.000000] [UZ:0.000000] [VA:0.000000] [VB:0.000000] [VC:0.000000] [VD:0.000000] [VE:0.000000] [VF:0.000000] [VG:0.000000] [VH:0.000000] [VI:0.000000] [VJ:0.000000] [VK:0.000000] [VL:0.000000] [VM:0.000000] [VN:0.000000] [VO:0.000000] [VP:0.000000] [VQ:0.000000] [VR:0.000000] [VS:0.000000] [VT:0.000000] [VU:0.000000] [VV:0.000000] [VW:0.000000] [VX:0.000000] [VY:0.000000] [VZ:0.000000] [WA:0.000000] [WB:0.000000] [WC:0.000000] [WD:0.000000] [WE:0.000000] [WF:0.000000] [WG:0.000000] [WH:0.000000] [WI:0.000000] [WJ:0.000000] [WK:0.000000] [WL:0.000000] [WM:0.000000] [WN:0.000000] [WO:0.000000] [WP:0.000000] [WQ:0.000000] [WR:0.000000] [WS:0.000000] [WT:0.000000] [WU:0.000000] [WV:0.000000] [WW:0.000000] [WX:0.000000] [WY:0.000000] [WZ:0.000000] [XA:0.000000] [XB:0.000000] [XC:0.000000] [XD:0.000000] [XE:0.000000] [XF:0.000000] [XG:0.000000] [XH:0.000000] [XI:0.000000] [XJ:0.000000] [XK:0.000000] [XL:0.000000] [XM:0.000000] [XN:0.000000] [XO:0.000000] [XP:0.000000] [XQ:0.000000] [XR:0.000000] [XS:0.000000] [XT:0.000000] [XU:0.000000] [XV:0.000000] [XW:0.000000] [XX:0.000000] [XY:0.000000] [XZ:0.000000] [YA:0.000000] [YB:0.000000] [YC:0.000000] [YD:0.000000] [YE:0.000000] [YF:0.000000] [YG:0.000000] [YH:0.000000] [YI:0.000000] [YJ:0.000000] [YK:0.000000] [YL:0.000000] [YM:0.000000] [YN:0.000000] [YO:0.000000] [YP:0.000000] [YQ:0.000000] [YR:0.000000] [YS:0.000000] [YT:0.000000] [YU:0.000000] [YV:0.000000] [YW:0.000000] [YX:0.000000] [YY:0.000000] [YZ:0.000000] [ZA:0.000000] [ZB:0.000000] [ZC:0.000000] [ZD:0.000000] [ZE:0.000000] [ZF:0.000000] [ZG:0.000000] [ZH:0.000000] [ZI:0.000000] [ZJ:0.000000] [ZK:0.000000] [ZL:0.000000] [ZM:0.000000] [ZN:0.000000] [ZO:0.000000] [ZP:0.000000] [ZQ:0.000000] [ZR:0.000000] [ZS:0.000000] [ZT:0.000000] [ZU:0.000000] [ZV:0.000000] [ZW:0.000000] [ZX:0.000000] [ZY:0.000000] [ZZ:0.000000]
```

Level system info: dynamic compensator available.











# Scan position '50'

Scan position is member of group(s):

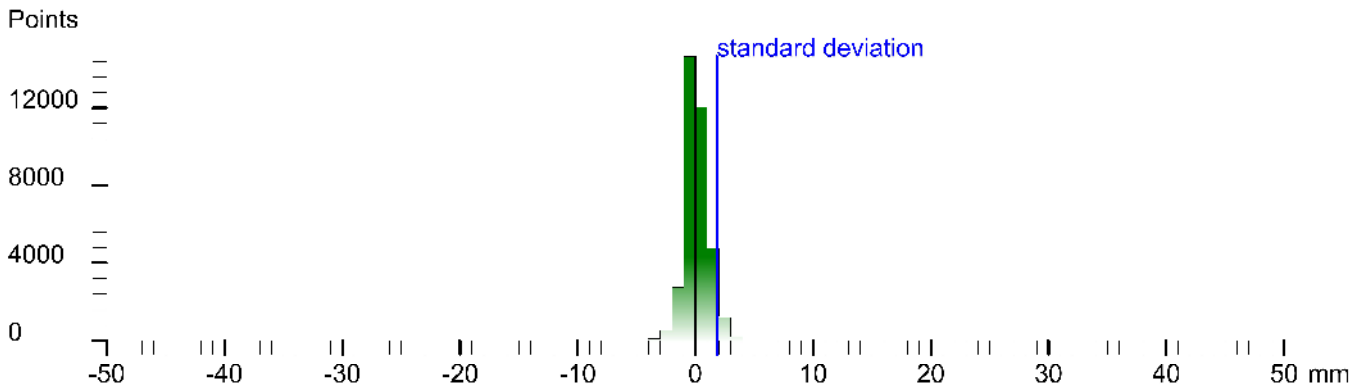
Status registration '[102h] registered with cloud to cloud'

Registration matrix:

```
-0.042182  0.999012  -0.014051  9.7512 m
-0.999109  -0.042157  0.002018  -7.8799 m
0.001423   0.014124   0.999899   6.3884 m
0.000000   0.000000   0.000000   1.0000
```

Result registration cloud to cloud standard deviation: 1.8 mm

## Deviation histogram



## Scan '50'

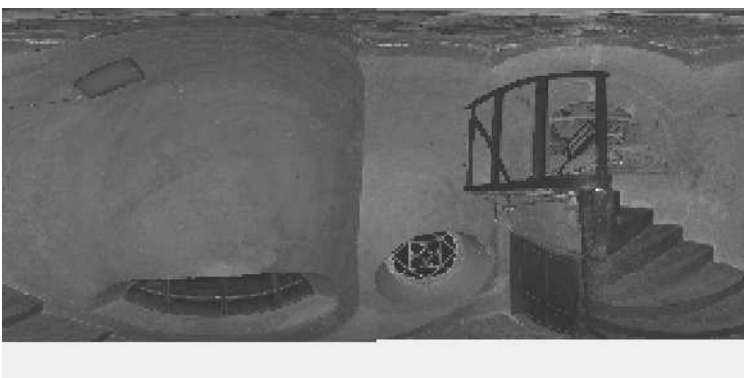
Scanner 'Z+F IMAGER 5016' serial number '5016-0100' Firmware 9.0.3.6562-0

Scan resolution 'High' quality 'Normal'

Metadata	Value
comment	
operator	

```
Scan comment: null
Sensor
sensors: 3096 *barometric transition rotation*
Barometer: 0.947766 bar 580.00° m
nav translation: -3.0779 m -2.1127 m 559.8318 m accuracies: 0.1935 m 0.1935 m 0.0001 m
nav rotation: 0.0000 0.0000 66.2710 accuracies: 0.0000 0.0000 15.0000
upside-down: no
Initial pre position: (Girdoor)
0.055 0.998 0.000 35.413
-0.998 0.065 0.000 -64.574
0.000 0.000 1.000 -35.537
0.000 0.000 0.000 1.000
```

Level system info: dynamic compensator available.





















# Scan position '59'

Scan position is member of group(s):

Status registration '[10123h] preregistered with cloud to cloud, manually'

Registration matrix:

-0.063334	-0.997357	-0.035654	11.8845 m
0.997973	-0.063065	-0.008645	-0.8259 m
0.006374	-0.036129	0.999326	5.2141 m
0.000000	0.000000	0.000000	1.0000

## Scan '59'

Scanner 'Z+F IMAGER 5016' serial number '5016-0100' Firmware 9.0.3.6562-0

Scan resolution 'High' quality 'Normal'

### Metadata Value comment operator

Scan comment: null  
Sensor: 3096 "barometric (translation: rotation)"

Barometer: 0.948311 bar 555.276 m  
nav translation: -3.0905 m 0.4122 m 554.7452 m accuracies: 5.3150 m 5.3150 m 0.0000 m  
nav rotation: 0.00000 0.0000 266.4473 accuracies: 0.0000 0.0000 15.0000  
upside-down: no  
Initial pre position (0:indoor)  
-3.062 -0.985 0.000 39.911  
0.998 -0.002 0.000 -54.873  
0.000 0.000 1.000 -40.626  
0.000 0.000 0.000 1.000

Level system info: dynamic compensator available.







# Scan position '61'

Scan position is member of group(s):

Status registration '[102h] registered with cloud to cloud'

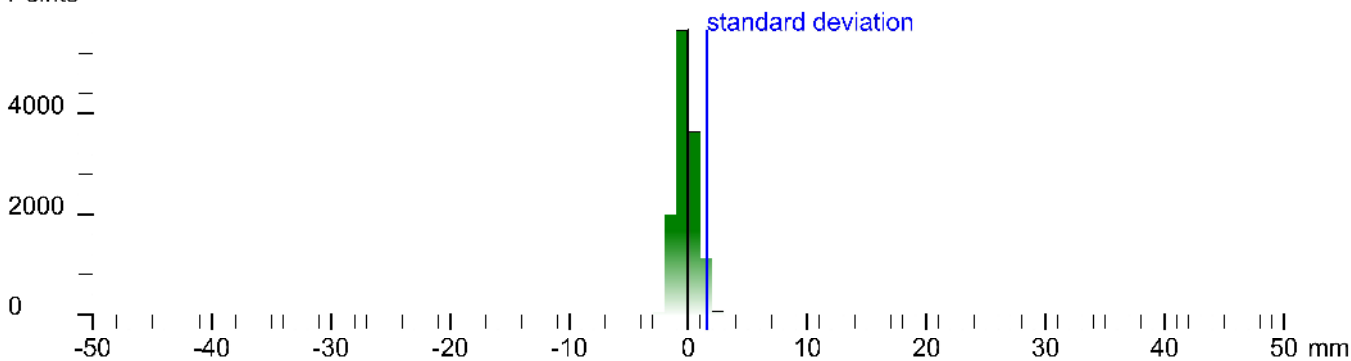
Registration matrix:

```
-0.959422  0.279834  -0.034735  12.7274 m
-0.279723  -0.960047  -0.008112  0.5414 m
-0.035618  0.001933  0.999363  4.2321 m
0.000000  0.000000  0.000000  1.0000
```

Result registration cloud to cloud standard deviation: 1.6 mm

## Deviation histogram

Points



## Scan '61'

Scanner 'Z+F IMAGER 5016' serial number '5016-0100' Firmware 9.0.3.6562-0

Scan resolution 'High' quality 'Normal'

**Metadata**    **Value**  
**comment**  
**operator**

```
Scan comment: '14082020 10:31' filename: '14082020' scanpos: '0' type: 'Bla-Drehung' project: 'Bla-Complet' type: 'spot' for: 'Bla' comment: '1' m: '1' scale: '20' sensor: 'Z+F' serial: '5016-0100' firmware: '9.0.3.6562-0' for: '14082020' for: '14082020'
Sensor
sensors: 3096 'barometric transition rotation'
Barometer: 0.948469 bar 553.825 m
nav translation: -3.0873 m -0.4674 m 553.7277 m accuracies: 5.3396 m 5.3396 m 0.0000 m
nav rotation: 0.0000 0.0000 -61.7891 accuracies: 0.0000 0.0000 1s.0000
upside-down: no
Initial pre position: (Girdoor)
-3.950 0.313 0.000 58.163
-0.313 -0.950 0.000 -54.568
0.000 0.000 1.000 -41.644
0.000 0.000 0.000 1.000
```

Level system info: dynamic compensator available.









# Scan position '64'

Scan position is member of group(s):

Status registration '[10123h]' preregistered with cloud to cloud, manually'

Registration matrix:

-0.229190	-0.973382	-0.001310	12.4116 m
0.973334	-0.229166	-0.010176	-0.6962 m
0.009606	-0.003608	0.999947	2.4258 m
0.000000	0.000000	0.000000	1.0000

## Scan '64'

Scanner 'Z+F IMAGER 5016' serial number '5016-0100' Firmware 9.0.3.6562-0

Scan resolution 'High' quality 'Normal'

### Metadata Value comment operator

Scan comment: null  
Sensor

sensors: 3096 "barometric (translation: rotation)"

Barometer: 0.948787 bar 551.207 m

nav translation: -3.5887 m -1.7762 m 55°, 1065 m accuracies: 6.0996 m 6.0996 m 0.0000 m

nav rotation: 0.00000 0.00000 251.3620 accuracies: 0.00000 0.00000 15.00000

upside-down: no

Initial pre position (0:indoor)

-0.320 -0.946 0.000 44.174

0.948 -0.390 0.000 -55.679

0.000 0.000 1.000 -44.265

0.000 0.000 0.000 1.000

Level system info: dynamic compensator available.



# Scan position '65'

Scan position is member of group(s):

Status registration '[102h] registered with cloud to cloud'

Registration matrix:

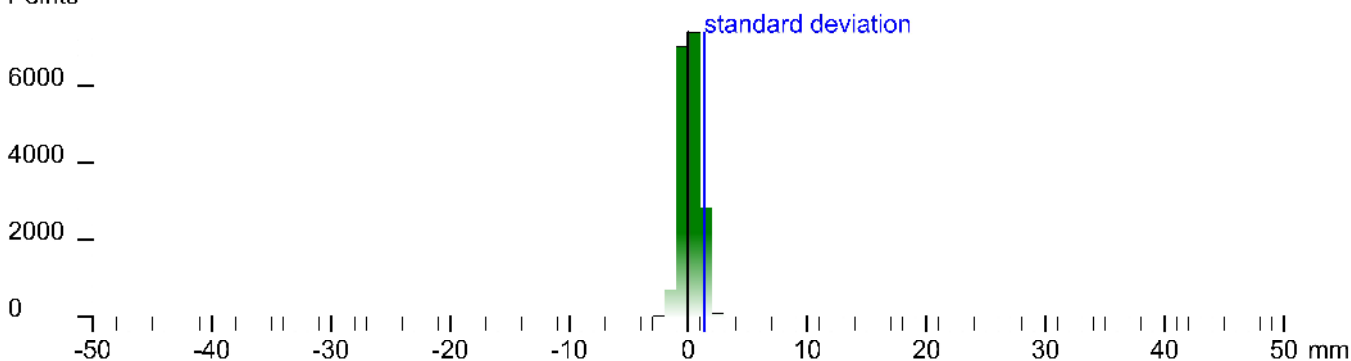
```

0.954984  0.296661  0.000402  12.3697 m
-0.296660  0.954983  0.000463  0.6696 m
-0.000246 -0.000561  0.999999  1.6995 m
0.000000  0.000000  0.000000  1.0000
    
```

Result registration cloud to cloud standard deviation: 1.3 mm

## Deviation histogram

Points



## Scan '65'

Scanner 'Z+F IMAGER 5016' serial number '5016-0100' Firmware 9.0.3.6562-0

Scan resolution 'High' quality 'Normal'

Metadata	Value
comment	
operator	

```

Scan position: '65' - name: '148:65' - status: '95' - type: '2D' - description: '2D' - comment: '1' - status: '22' - scan: 'Scan' - quality: 'High' - resolution: 'High' - format: '1024x1536' - 11254611547
Sensor
sensors: 3096 *barometric transition rotation*
Barometer: 0.948940 bar 549.885 m
nav translation: 1.1926 m -0.1812 m 5.98330 m accuracies: 5.7216 m 5.7216 m 0.0000 m
nav rotation: 0.0000 0.0000 1.4390 accuracies: 0.0000 0.0000 15.0000
upside-down: no
Initial pre position: (Girdoor)
0.85 0.300 0.000 45.367
-0.300 0.954 0.000 -55.810
0.000 0.000 1.000 -45.747
0.000 0.000 0.000 1.000
    
```

Level system info: dynamic compensator available.





# Scan position '67'

Scan position is member of group(s):

Status registration '[102h] registered with cloud to cloud'

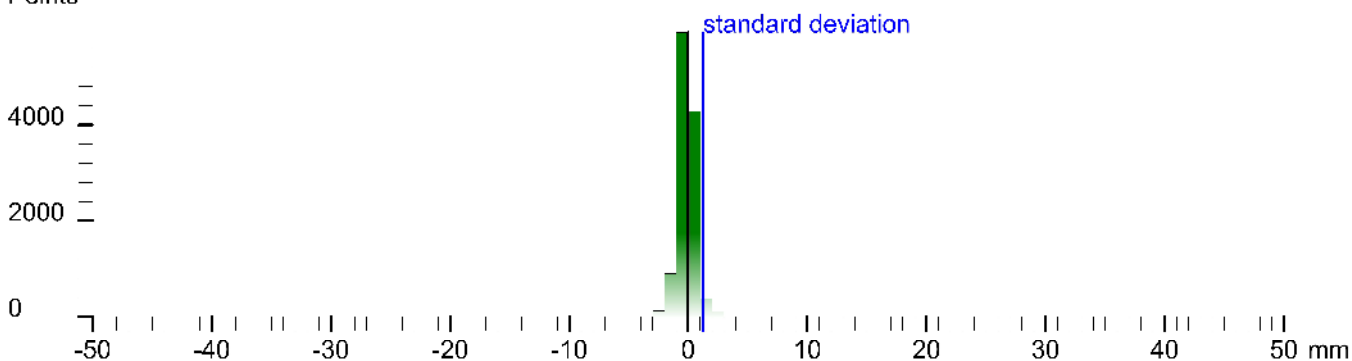
Registration matrix:

```
-0.991308 -0.128541 0.028047 11.2357 m
0.128704 -0.991674 0.004121 -0.7603 m
0.027284 0.007694 0.999598 -0.5576 m
0.000000 0.000000 0.000000 1.0000
```

Result registration cloud to cloud standard deviation: 1.3 mm

## Deviation histogram

Points



## Scan '67'

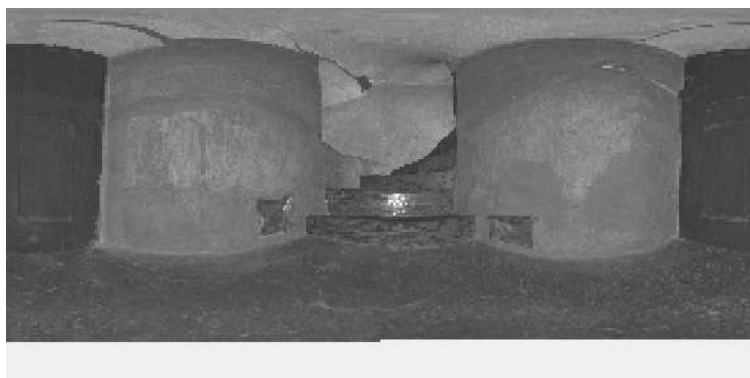
Scanner 'Z+F IMAGER 5016' serial number '5016-0100' Firmware 9.0.3.6562-0

Scan resolution 'High' quality 'Normal'

Metadata	Value
comment	
operator	

```
Scan comment: null
Sensor
sensors: 3096 *barometric rotation*
Barometer: 0.949336 bar 548.21 m
nav translation: -3.3423 m 3.4854 m 5*6.2226 m accuracies: 6.4134 m 6.4134 m 0.0002 m
nav rotation: 0.0000 0.0000 * /9.826 / accuracies: 0.0000 0.0000 1s.0000
upside-down: no
Initial pre position: (Girdoor)
-1.000 0.000 0.000 44.190
-0.003 -1.000 0.000 -53.692
0.000 0.000 1.000 -49.148
0.000 0.000 0.000 1.000
```

Level system info: no information about the level system stored in the zfs header



















# Scan position '74'

Scan position is member of group(s):

Status registration '[102h] registered with cloud to cloud'

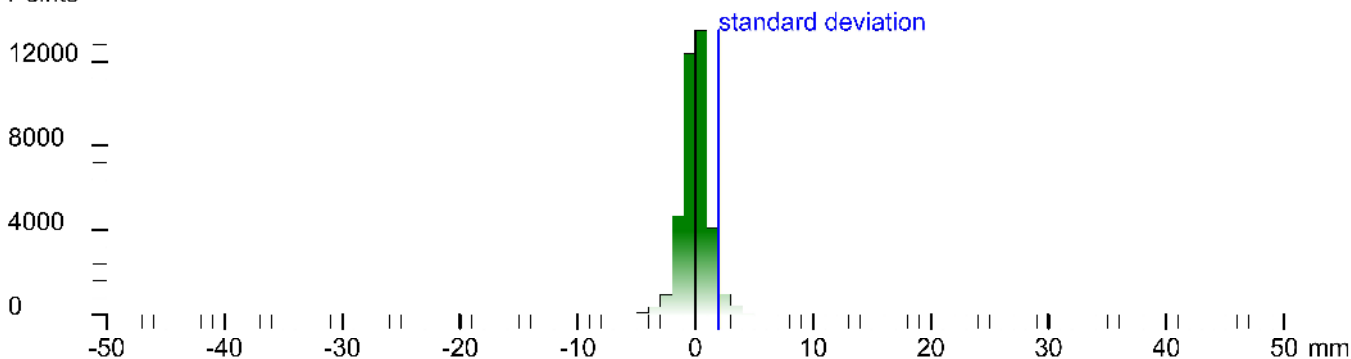
Registration matrix:

```
0.391114 -0.920223 -0.014911 11.0693 m
0.920339 0.391109 0.003289 -3.4112 m
0.002806 -0.015010 0.999883 11.0084 m
0.000000 0.000000 0.000000 1.0000
```

Result registration cloud to cloud standard deviation:2.0 mm

## Deviation histogram

Points



## Scan '74'

Scanner 'Z+F IMAGER 5016' serial number '5016-0100' Firmware 9.0.3.6562-0

Scan resolution 'High' quality 'Normal'

Metadata	Value
comment	
operator	

```
Scan position: '74' - member of group(s): '74' - registration: '102h' - status: 'registered with cloud to cloud' - registration matrix: '0.391114 -0.920223 -0.014911 11.0693 m
0.920339 0.391109 0.003289 -3.4112 m
0.002806 -0.015010 0.999883 11.0084 m
0.000000 0.000000 0.000000 1.0000'
Sensor
sensors: 3096 'barometric rotation'
Barometer: 0.948072 bar 557.314 m
nav translation: -3.4078 m 1.3180 m 556.7950 m accuracies: 5.5907 m 5.5907 m 0.0000 m
nav rotation: 0.0000 0.0000 283.1022 accuracies: 0.0000 0.0000 15.0000
upside-down: no
Initial pre position: (0/door)
0.227 -0.974 0.000 38.442
0.974 0.227 0.000 -44.772
0.000 0.000 1.000 -38.576
0.000 0.000 0.000 1.000
```

Level system info: no information about the level system stored in the zfs header







# Scan position '77'

Scan position is member of group(s):

Status registration '[102h] registered with cloud to cloud'

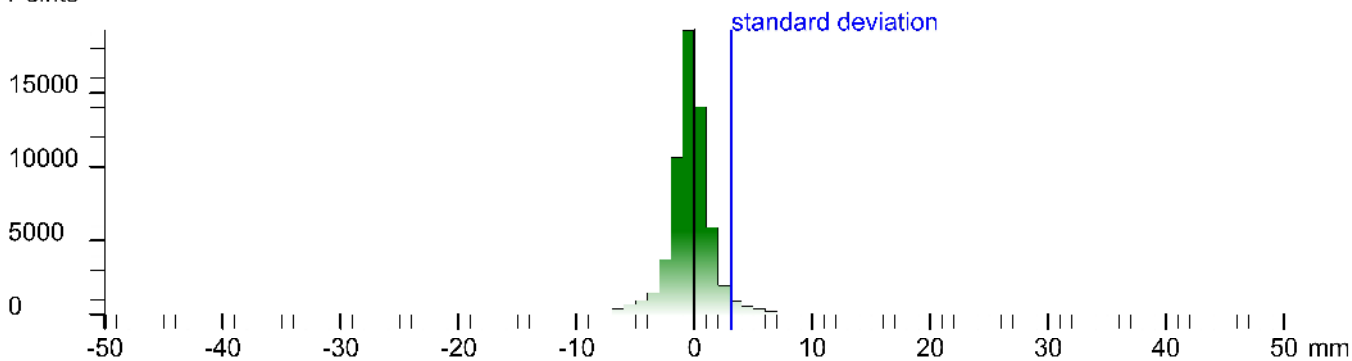
Registration matrix:

```
-0.210060 -0.977579 -0.014759 9.3187 m
0.977662 -0.210144 0.004339 -3.1851 m
-0.007343 -0.013519 0.999881 13.5901 m
0.000000 0.000000 0.000000 1.0000
```

Result registration cloud to cloud standard deviation:3.1 mm

## Deviation histogram

Points



## Scan '77'

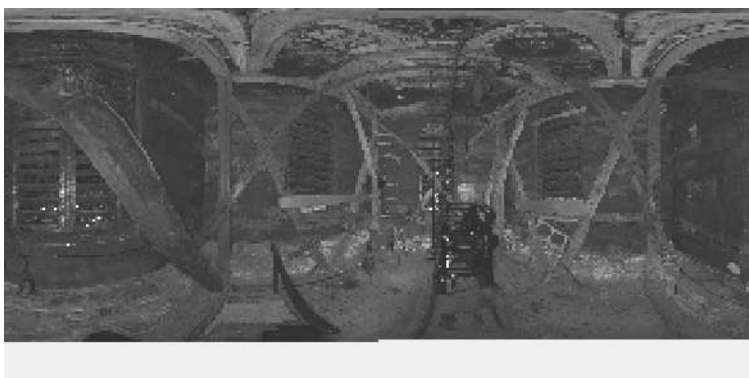
Scanner 'Z+F IMAGER 5016' serial number '5016-0100' Firmware 9.0.3.6562-0

Scan resolution 'High' quality 'Normal'

Metadata	Value
comment	
operator	

```
Scan ID: 14884003 - name: 148-77 - status: 77 - type: 'Bluewing' - project: 'Bluewing' - spot: 'Bluewing' - comparison: 'none' - scale: '27' - sensor: 'Z+F IMAGER 5016' - resolution: 'High' - quality: 'Normal' - scan: '14884003' - time: '14884003'
Sensor
sensors: 3096 *barometric transition rotation*
Barometer: 0.947915 bar 558.802 m
nav translation: -2.7138 m 7.9179 m 558.5029 m accuracies: 9.3592 m 9.3592 m 0.0000 m
nav rotation: 0.0000 0.0000 24.77141 accuracies: 0.0000 0.0000 15.0000
upside-down: no
Initial pos position: (0 indoor)
-3.379 -0.925 0.000 34.116
0.925 -0.379 0.000 -31.988
0.000 0.000 1.000 -36.868
0.000 0.000 0.000 1.000
```

Level system info: dynamic compensator available.





# Scan position '78'

Scan position is member of group(s):

Status registration '[102h] registered with cloud to cloud'

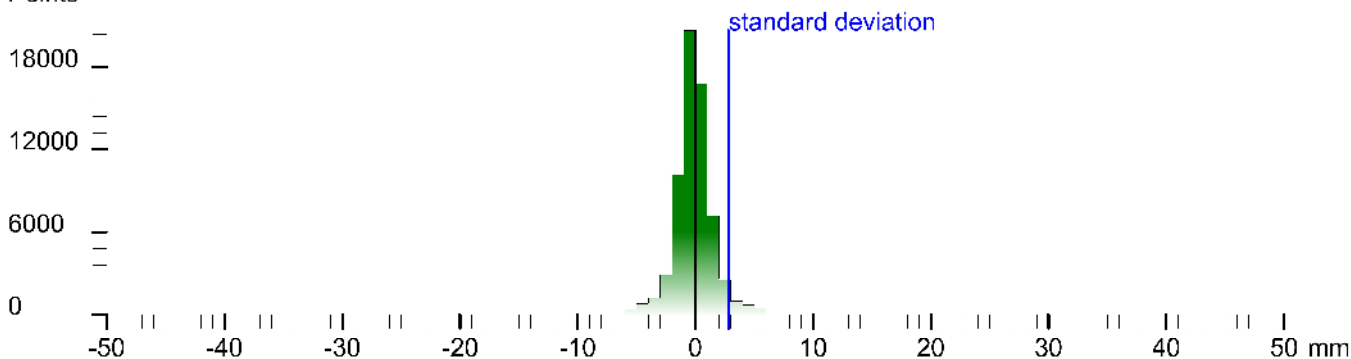
Registration matrix:

```
-0.600269  0.799679  -0.013925  9.1607 m  
-0.799775  -0.600297  0.002526  -4.2506 m  
-0.006340  0.012654  0.999900  13.5882 m  
0.000000  0.000000  0.000000  1.0000
```

Result registration cloud to cloud standard deviation: 2.8 mm

## Deviation histogram

Points



## Scan '78'

Scanner 'Z+F IMAGER 5016' serial number '5016-0100' Firmware 9.0.3.6562-0

Scan resolution 'High' quality 'Normal'

Metadata	Value
comment	
operator	

```
Scan position: '78' - member of group(s): '78' - registration: '102h' - registered with cloud to cloud  
Sensor  
sensors: 3096 *barometer* rotation:  
Barometer: 0.947954 bar 558.345 m  
nav translation: -3.8984 m 3.7769 m 558.2938 m accuracies: 5.7068 m 5.7068 m 0.0001 m  
nav rotation: 0.0000 0.0000 0.0000 *Z+F sensor's accuracies: 0.0000 0.0000 16.0000  
upside-down: no  
Initial pre position: (0/door)  
-3.609 0.793 0.000 33.218  
-3.793 -0.609 0.000 -31.211  
0.000 0.000 1.000 -37.078  
0.000 0.000 0.000 1.000
```

Level system info: no information about the level system stored in the zfs header





# Scan position '8'

Scan position is member of group(s):

Status registration '[102h] registered with cloud to cloud'

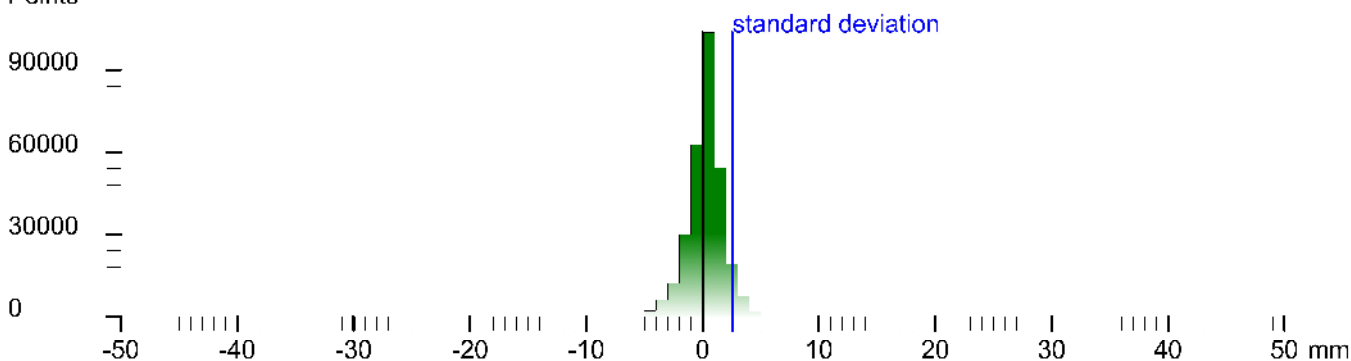
Registration matrix:

```
0.975081 -0.221850 -0.000203 28.4671 m
0.221850 0.975081 -0.000138 -15.8383 m
0.000229 0.000090 1.000000 -0.2519 m
0.000000 0.000000 0.000000 1.0000
```

Result registration cloud to cloud standard deviation:2.6 mm

## Deviation histogram

Points



## Scan '8'

Scanner 'Z+F IMAGER 5016' serial number '5016-0100' Firmware 9.0.3.6562-0

Scan resolution 'High' quality 'Normal'

**Metadata**    **Value**  
**comment**  
**operator**

```
Scan comment: null
Sensor
sensors: 3100 *barome or transition rotation gps
Barometer: 0.943710 bar 595.707 m
nav translation: -3.5860 m 7.0903 m 595.2 *39 m accuracies: 8.72/0 m 8.7240 m 0.0000 m
nav rotation: 0.0000 0.0000 0.43.33 *6 accuracies: 0.0000 0.0000 1s.0000
upside-down: no
GPS lat:45.271339 long:25.045486 satellites:6 height:633.1m hddos: *4 vdcop:2.1m hacc:7.4 *1 vacc:0.0 flags:G3 stand alone 3D solution
north:5014951.730 m east:340681.388 m zone:35T
Initial pre position (3co. tooor)
0.958 -0.287 0.000 0.4316
0.267 0.958 0.000 - 8.728
0.000 0.000 1.000 -0.161
0.000 0.000 0.000 1.000
```

Level system info: dynamic compensator available.





# Scan position '81'

Scan position is member of group(s):

Status registration '[102h] registered with cloud to cloud'

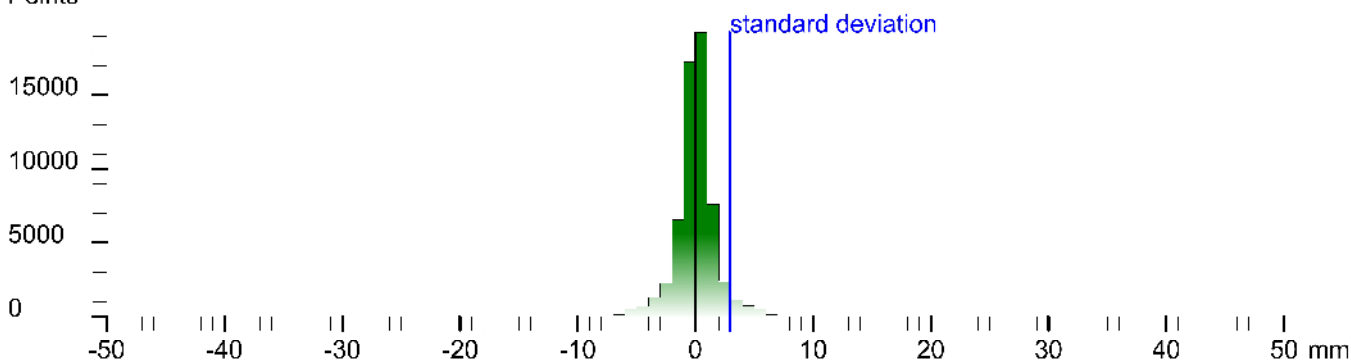
Registration matrix:

```
-0.234119 -0.972078 -0.015966 10.3515 m  
0.972171 -0.234224 0.004997 -2.4707 m  
-0.008597 -0.014353 0.999860 13.6140 m  
0.000000 0.000000 0.000000 1.0000
```

Result registration cloud to cloud standard deviation:2.9 mm

## Deviation histogram

Points



## Scan '81'

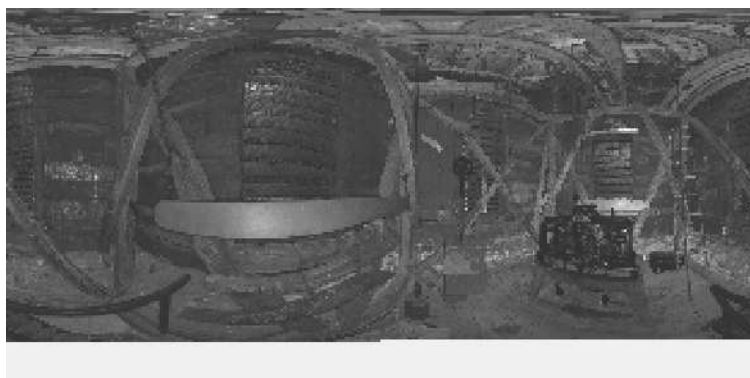
Scanner 'Z+F IMAGER 5016' serial number '5016-0100' Firmware 9.0.3.6562-0

Scan resolution 'High' quality 'Normal'

Metadata	Value
comment	
operator	

```
Scan on name: 'all' LPS: 'all' name: '148:81' status: 'S' type: 'B' description: 'point' 'B' complete: 'S' position: 'all' ...  
Sensor  
sensors: 3096 *barome or transition rotation*  
Barometer: 0.948042 bar 557.575 m  
nav translation: -3.2075 m 3.3982 m 557.2581 m accuracies: 5.3277 m 5.3277 m 0.0001 m  
nav rotation: 0.0000 0.0000 242.6775 accuracies: 0.0000 0.0000 15.0000  
upside-down: no  
Initial pos position: (0:indoor)  
-3.458 -0.888 0.000 33.796  
0.688 -0.4:9 0.000 -30.923  
0.000 0.000 1.000 -38.113  
0.000 0.000 0.000 1.000
```

Level system info: no information about the level system stored in the zfs header







# Scan position '84'

Scan position is member of group(s):

Status registration '[102h] registered with cloud to cloud'

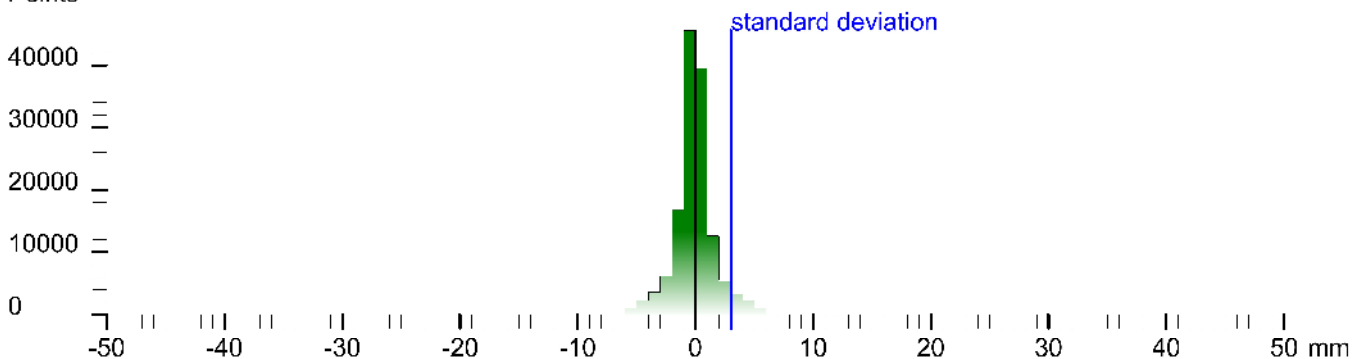
Registration matrix:

```
-0.857051 0.515007 -0.015313 12.5338 m  
-0.515120 -0.857108 0.004379 -3.7507 m  
-0.010870 0.011641 0.999873 13.5809 m  
0.000000 0.000000 0.000000 1.0000
```

Result registration cloud to cloud standard deviation:3.0 mm

## Deviation histogram

Points



## Scan '84'

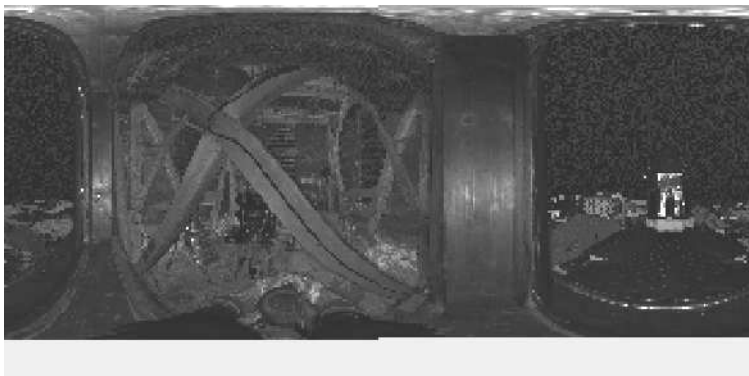
Scanner 'Z+F IMAGER 5016' serial number '5016-0100' Firmware 9.0.3.6562-0

Scan resolution 'High' quality 'Normal'

**Metadata**    **Value**  
**comment**  
**operator**

```
Scan comment: null  
Sensor  
sensors: 3100 *barome or transition rotation gps  
Barometer: 0.948232 bar 555.902 m  
nav translation: 0.2790 m -1.5767 m 555./280 m accuracies: 5.9093 m 5.9093 m 0.0010 m  
nav rotation: 0.0000 0.0000 44.5473 accuracies: 0.0000 0.0000 1s.0000  
upside-down: no  
GPS lat:45.271484 long:25.045170 satellites:4 height:655.3m hdop:6.6 vtdcp:2.7m hacc:6.4 m vacc:12.0 flags:G3 's same sbrno 3D solution'  
north:5014968.367 m east:340659.785 m zone:35T  
Initial pre position (3-coo. tocoor):  
0.713 0.707 0.000 26.377  
-3.702 0.713 0.000 -44.800  
0.000 0.000 1.000 -39.947  
0.000 0.000 0.000 1.000
```

Level system info: dynamic compensator available.





# Scan position '85'

Scan position is member of group(s):

Status registration '[102h] registered with cloud to cloud'

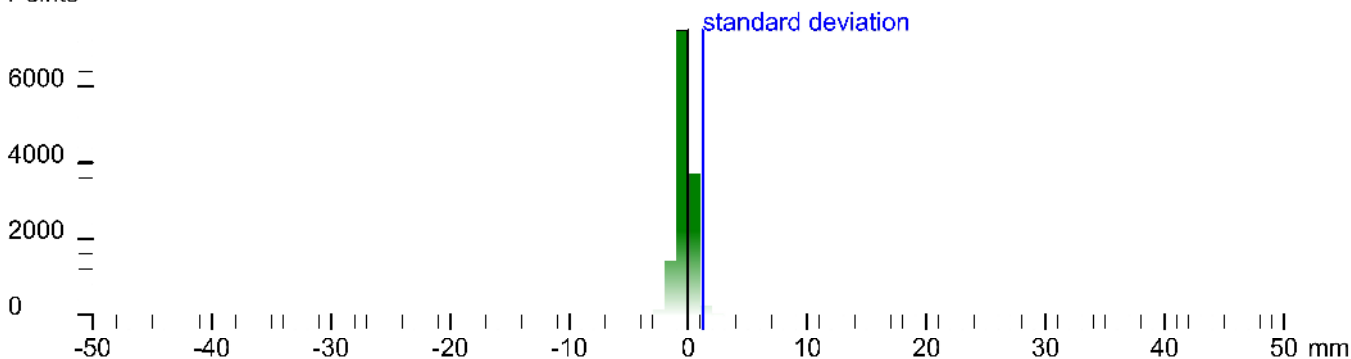
Registration matrix:

-0.096588	-0.995296	0.007547	9.8337 m
0.995279	-0.096509	0.010216	-6.0467 m
-0.009439	0.008498	0.999919	-0.4864 m
0.000000	0.000000	0.000000	1.0000

Result registration cloud to cloud standard deviation: 1.2 mm

## Deviation histogram

Points



## Scan '85'

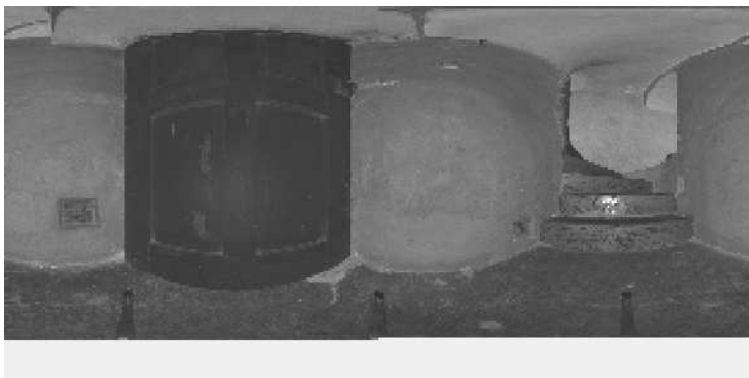
Scanner 'Z+F IMAGER 5016' serial number '5016-0100' Firmware 9.0.3.6562-0

Scan resolution 'High' quality 'Normal'

Metadata	Value
comment	
operator	

```
Scan position: '148:102h' member: '148:102h' scan: '85' type: 'B2' description: 'B2' comment: 'B2' status: '20' sensor: 'Z+F' scan resolution: 'High' quality: 'Normal' firm: '9.0.3.6562-0' firm: '20140128'
Sensor
sensors: 3096 *barometric transition rotation*
Barometer: 0.949769 bar 542.409 m
nav translation: 1.0593 m -5.2902 m 5/2.0/11 m accuracies: 8.1161 m 8.1161 m 0.0000 m
nav rotation: 0.0000 0.0000 258.8241 accuracies: 0.0000 0.0000 15.0000
upside-down: no
Initial pre position: (0 indoor)
-3.19/ -0.98/ 0.000 27.132
0.981 -0.194 0.000 -49.971
0.000 0.000 1.000 -53.357
0.000 0.000 0.000 1.000
```

Level system info: no information about the level system stored in the zfs header



# Scan position '9'

Scan position is member of group(s):

Status registration '[102h] registered with cloud to cloud'

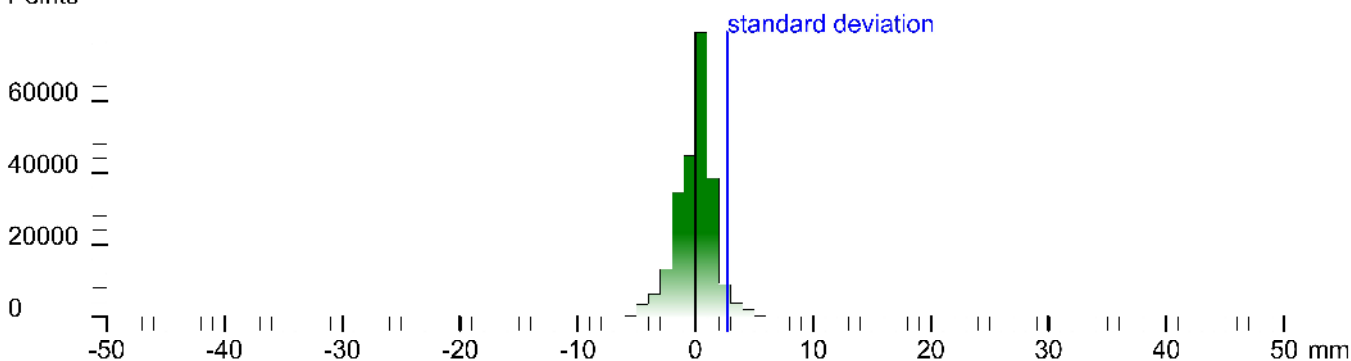
Registration matrix:

```
0.910768 -0.412919 -0.000054 37.8123 m
0.412919 0.910768 -0.000410 -11.7699 m
0.000218 0.000351 1.000000 -0.1680 m
0.000000 0.000000 0.000000 1.0000
```

Result registration cloud to cloud standard deviation:2.7 mm

## Deviation histogram

Points



## Scan '9'

Scanner 'Z+F IMAGER 5016' serial number '5016-0100' Firmware 9.0.3.6562-0

Scan resolution 'High' quality 'Normal'

**Metadata**    **Value**  
**comment**  
**operator**

```
Scan name: cal_190804_031 - mangle: 148:0 - sample: 0 - path: 0 - description: project "Ba.Computa." - photo: data - camera: x - m - resolution: 27 - scan: Scan - resolution: 1 - resolution: 1 - 124 - 101 - for: 120 - 421 - 150  
Sensor  
sensors: 3100 * barome or transition rotation gps  
Barometer: 0.943836 bar 598.359 m  
nav translation: 11.0030 m 5.7310 m 896.3199 m accuracies: 11.5956 m 11.5956 m 0.0001 m  
nav rotation: 0.0000 0.0000 334.415 / accuracies: 0.0000 0.0000 15.0000  
upside-down: no  
GPS lat:14.5271263 long:25.045484 satellites:3 height:629.1m hdop:6.2 vdcpr:1.0m hacc: 9.8m vacc:13.0 tags:G2 *stand alone 2D solution  
Initial pre position (3-coo.coord)  
0.907 -0.432 0.000 45.918  
0.432 0.902 0.000 -2.994  
0.000 0.000 1.000 0.848  
0.000 0.000 0.000 1.000
```

Level system info: dynamic compensator available.



# Labels

No labels stored in project

# Links

No links stored in project

# Summary

Number of scans: **85** used in **85** scan positions

Point clouds: **0**

Scans with color: **0** mapped **0**

Scans with thermal data: **0** mapped **0**

Scans with errors:**0** warnings:**0** messages:**0**

Missed or corrupted scans files: **0**

Scanners used in the project: **5016-0100**

**0** known targets used

**0** targets used in **0** of **85** scan positions

First scan taken at: **26.9.2022 09:35::09** last scan at: **4.10.2022 16:02:11**

Duration: **8d 6h 27min 2sec**