

Project report

Date: Mon Sep 13 2021 13:42:57
Build with: Z+FLaserControl 9.0.2.24038
Project: Biserica de lemn (Sfintii Arhangheli Mihail si Gavriil) Plopiș
Master scan position: 1

74 of 75 scan positions used for registration.

74 of 75 scans registered.

Quality standard deviation of the cloud to cloud registration

d:3.26 mm

Superior matrix

1.000000	0.000000	0.000000	0.0000 m
0.000000	1.000000	0.000000	0.0000 m
0.000000	0.000000	1.000000	0.0000 m
0.000000	0.000000	0.000000	1.0000

Scan position '1'

Scan position is member of group(s):
Status registration '[23h] preregistered'
Registration matrix:

0.751942	0.659229	0.000000	0.0000 m
-0.659229	0.751942	0.000000	0.0000 m
0.000000	0.000000	1.000000	0.0000 m
0.000000	0.000000	0.000000	1.0000

Scan '1'

Scanner 'Z+F IMAGER 5016' serial number '5016-0100' Firmware 9.0.3.6562-0
Scan resolution 'High' quality 'Normal'

Metadata Value comment operator

Scan comment: null
Sensor
sensors: 3100 *barometric translation: rotation: gps
Barometer: 0.970385 bar 363.122 m
nav translation: 0.0000 m 0.0000 m 362.9337 m accuracies: 5.1000 m 5.1000 m 0.0000 m
nav rotation: 0.00000 0.00000 41.2411 accuracies: 0.00000 0.00000 15.0000
upside-down: no
GPS lat:47.5916+8 long:23.770361 satellites:7 height:442.6m hdop:1.3 vdcpl:1.5m hacc:4.9m vacc:6.6 flags:G3 stand alone 3D solution
north:5274634.21 m east:708274.770 m zone:34T
Initial pre position (300..toor)
0.752 0.659 0.000 0.000
-0.659 0.752 0.000 0.000
0.000 0.000 1.000 0.000
0.000 0.000 0.000 1.000

Level system info: dynamic compensator available.



Scan position '14'

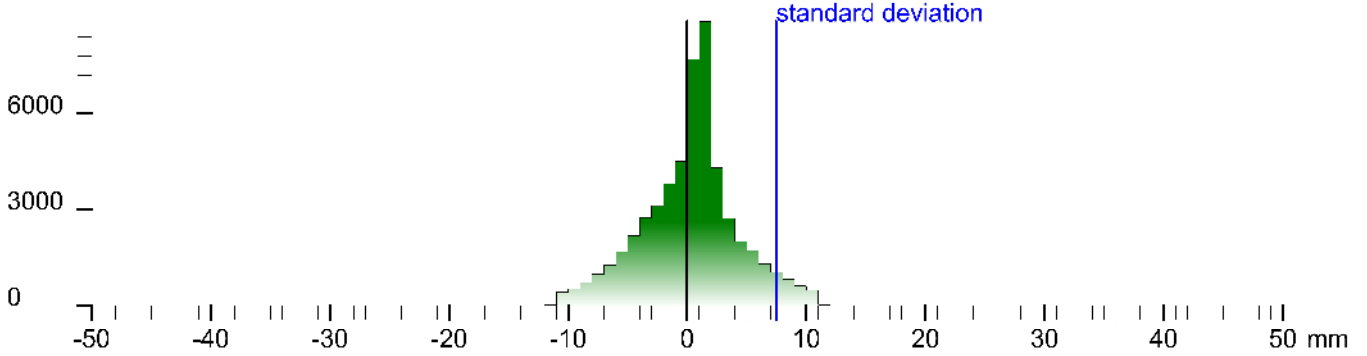
Scan position is member of group(s):
 Status registration '[102h] registered with cloud to cloud'
 Registration matrix:

```
-0.661453 -0.749987 0.000087 35.8051 m
0.749987 -0.661453 -0.000077 4.9459 m
0.000116 0.000014 1.000000 3.6909 m
0.000000 0.000000 0.000000 1.0000
```

Result registration cloud to cloud standard deviation: 7.5 mm

Deviation histogram

Points



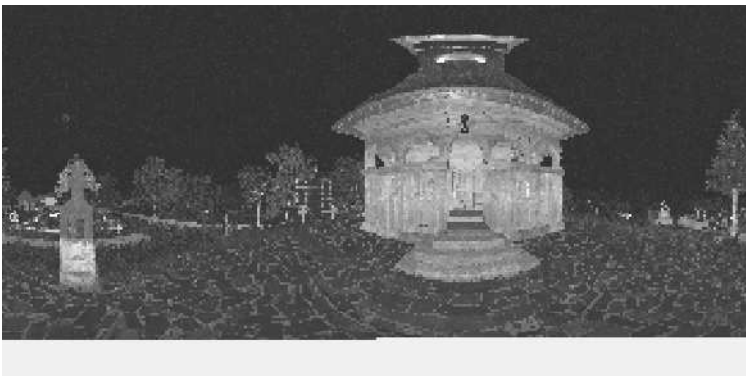
Scan '14'

Scanner 'Z+F IMAGER 5016' serial number '5016-0100' Firmware 9.0.3.6562-0
 Scan resolution 'High' quality 'Normal'

Metadata	Value
comment	
operator	

```
Sensor: 3100 *barometer transition rotation gps
Barometer: 0.970292 bar 383.926 m
nav translation: 10.877 m -52.5541 m 363.4526 m accuracies: 32.593 m 52.1583 m 0.000 m
nav rotation: 0.0000 0.0000 229.0979 accuracies: 0.0000 0.0000 15.0000
upside-down: no
GPS: lat:47.591671 long:23.770684 satellites:8 height:448.3m hddo:1.7 vdcpl:1.2m hacc:5.3m vacc:4.7 tags:G3 stand alone 3D solution
north:5274638.368 m east:7083.3966 m zero:34T
Initial pre position (3-coor):
-0.706 -0.706 0.000 38.225
0.706 -0.706 0.000 3.561
0.000 0.000 1.000 0.519
0.000 0.000 0.000 1.000
```

Level system info: dynamic compensator available.



Scan position '15'

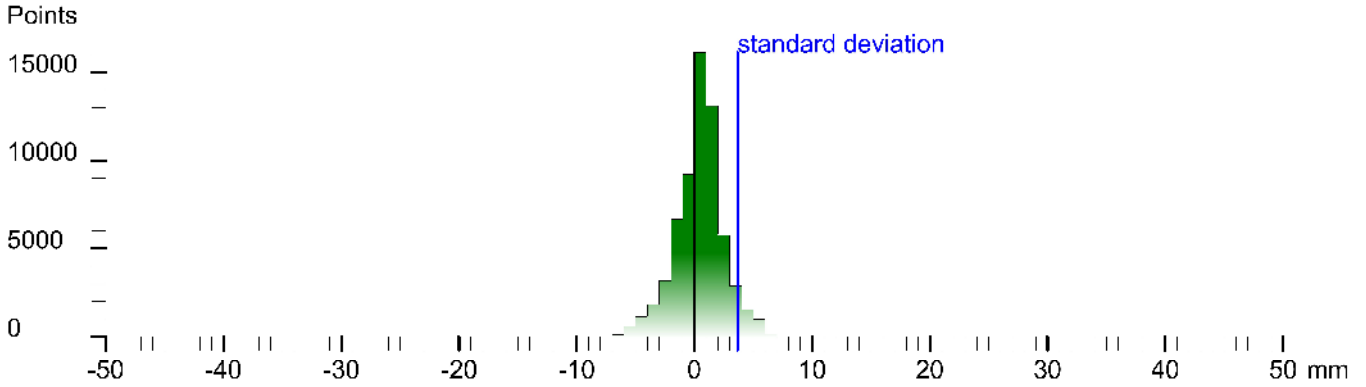
Scan position is member of group(s):
 Status registration '[102h] registered with cloud to cloud'
 Registration matrix:

```

0.962262  0.272123  0.000777  38.2787 m
-0.272124 0.962263  0.000088  10.0079 m
-0.000723 -0.000296 1.000000  3.9479 m
0.000000  0.000000  0.000000  1.0000
    
```

Result registration cloud to cloud standard deviation:3.7 mm

Deviation histogram



Scan '15'

Scanner 'Z+F IMAGER 5016' serial number '5016-0100' Firmware 9.0.3.6562-0
 Scan resolution 'High' quality 'Normal'

Metadata	Value
comment	
operator	

```

Sensor
sensors: 3100 *barome or transition rotation gps
Barometer: 0.970235 bar 384.419 m
nav translation: 2.5978 m 1.7920 m 303.8767 m accuracies: 6.7254 m 6.7254 m 3.0000 m
nav rotation: 0.0000 0.0000 4.59e-6 accuracies: 0.0000 0.0000 1s.0000
upside-down: no
GPS: lat:47.591721 long:23.770807 satellites:8 height:451.0m hhdop:1.1 vhdop:1.4m hacc:5.7-m vacc:5.8 flags:G3 'stand alone 3D solution'
north:5274513.815 m east:70834.773 m zone:34T
Initial pre position (3-coo. tocoor)
0.998 0.257 0.000 40.004
-0.252 0.988 0.000 9.552
0.000 0.000 1.000 0.843
0.000 0.000 0.000 1.000
    
```

Level system info: dynamic compensator available.



Scan position '16'

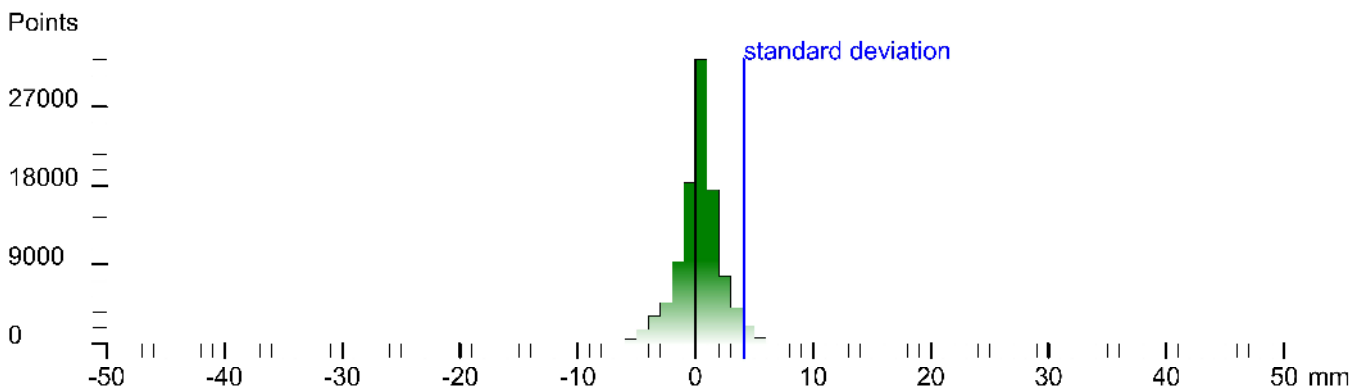
Scan position is member of group(s):
 Status registration '[102h] registered with cloud to cloud'
 Registration matrix:

```

0.388342  0.921515  0.000937  43.9872 m
-0.921516 0.388342 -0.000260 11.3984 m
-0.000604 -0.000762 1.000000  3.9844 m
0.000000  0.000000  0.000000  1.0000
    
```

Result registration cloud to cloud standard deviation:4.1 mm

Deviation histogram



Scan '16'

Scanner 'Z+F IMAGER 5016' serial number '5016-0100' Firmware 9.0.3.6562-0
 Scan resolution 'High' quality 'Normal'

Metadata	Value
comment	
operator	

```

Sensor
sensors: 3100 *barome or transition rotation gps
Barometer: 0.970166 bar 385.008 m
nav translation: 5.5955 m -0.3653 m 304.5635 m accuracies: 7.978° m 7.978° m 0.000° m
nav rotation: 0.0000 0.0000 0.0000 61.57/s/ accuracies: 0.0000 0.0000 1s.0000
upside-down: no
GPS lat:47.591717 long:23.770984 satellites:6 height:451.2m hdx:2.8 vdc:3.3m hacc: 0.0m vacc:10.0 tags:G3 *stand alone 3D solution
north:5274513.670 m east:708319.806 m zone:34T
Initial pre position (3-coor):
0.476 0.476 0.000 45.698
-0.879 0.476 0.000 9.187
0.000 0.000 1.000 1.633
0.000 0.000 0.000 1.000
    
```

Level system info: dynamic compensator available.



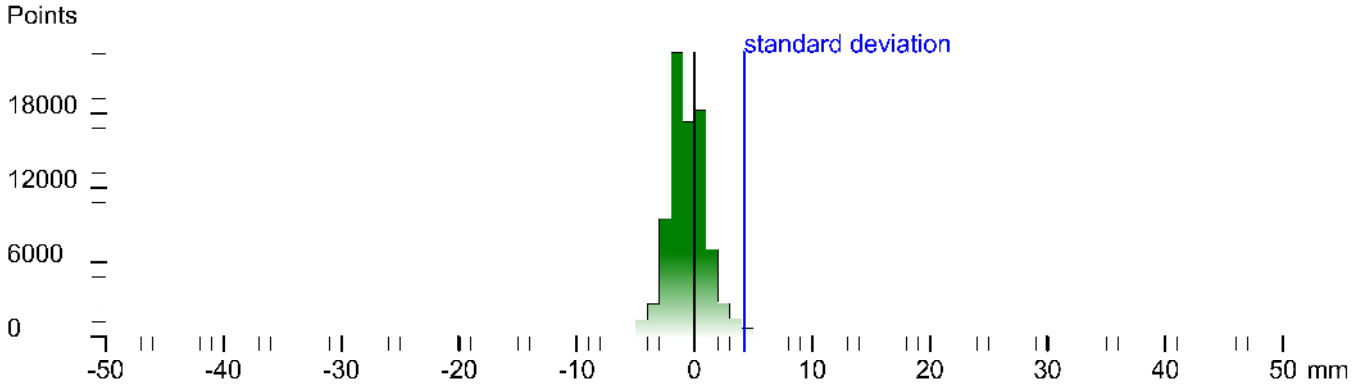
Scan position '18'

Scan position is member of group(s):
 Status registration '[102h] registered with cloud to cloud'
 Registration matrix:

```
-0.997419 -0.071802 0.000429 48.0548 m
0.071802 -0.997419 -0.000329 9.0419 m
0.000451 -0.000298 1.000000 4.2404 m
0.000000 0.000000 0.000000 1.0000
```

Result registration cloud to cloud standard deviation:4.2 mm

Deviation histogram



Scan '18'

Scanner 'Z+F IMAGER 5016' serial number '5016-0100' Firmware 9.0.3.6562-0
 Scan resolution 'High' quality 'Normal'

Metadata **Value**
comment
operator

```
Scan comment: null
Sensor
sensors: 3100 *barometer transition rotation gps
Barometer: 0.970009 bar 388.367 m
nav translation: -3.6974 m -2.9934 m 365.8373 m accuracies: 6.0265 m 6.6265 m 0.0000 m
nav rotation: 0.0000 0.0000 79.3961 accuracies: 0.0000 0.0000 1s.0000
upside-down: no
GPS lat:47.591856 long:23.777029 satellites:6 height:447.0m hdop:4.7 vdcop:4.7m hacc: 7.0m vacc:11.0 fllgs:G3 *stand alone 3D solution*
north:5274537.062 m east:708321.927 m zcra:34T
Initial pre position (3-coo. tocoor)
-0.997 0.080 0.000 48.347
-0.080 -0.997 0.000 2.288
0.000 0.000 1.000 3.004
0.000 0.000 0.000 1.000
```

Level system info: dynamic compensator available.



Scan position '19'

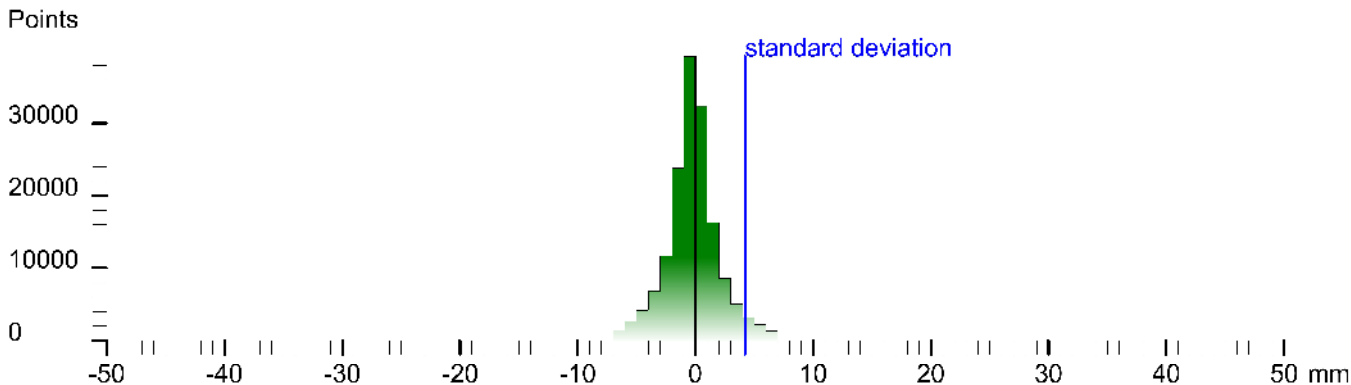
Scan position is member of group(s):
 Status registration '[102h] registered with cloud to cloud'
 Registration matrix:

```

0.555781  0.831328  0.001361  51.5496 m
-0.831329 0.555782 -0.000353 12.8510 m
-0.001050 -0.000936 0.999999  4.4022 m
0.000000  0.000000  0.000000  1.0000
    
```

Result registration cloud to cloud standard deviation:4.2 mm

Deviation histogram



Scan '19'

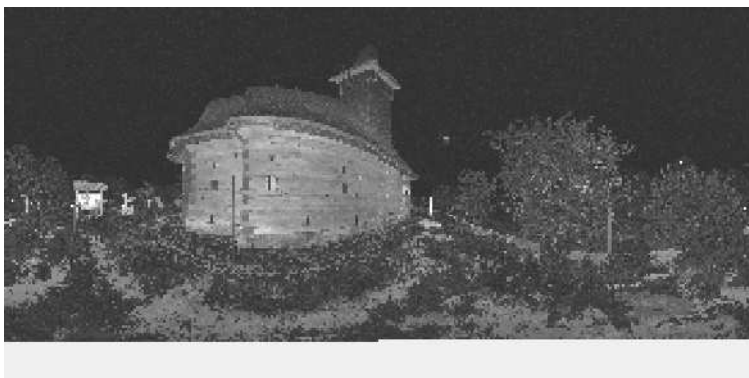
Scanner 'Z+F IMAGER 5016' serial number '5016-0100' Firmware 9.0.3.6562-0
 Scan resolution 'High' quality 'Normal'

Metadata **Value**
comment
operator

```

Scan comment: null
Sensor
sensors: 3100 *barometric transition rotation gps
Barometer: 0.969988 bar 388.542 m
nav translation: 2.3390 m 1.7922 m 306.3101 m accuracies: 6.5175 m 6.5175 m 3.0000 m
nav rotation: 0.0000 0.0000 0.0000 62.5177 / accuracies: 0.0000 0.0000 15.0000
upside-down: no
GPS lat:47.591709 long:23.777046 satellites:7 height:448.4m hddoa:°.6 vddcp:1.8m hacc:5.5m vacc:8.3 flags:G3 stand alone 3D solution
north:5274513.043 m east:708326.002 m zcorr:34T
Initial pre position (3-coo. tocoor)
0.609 0.794 0.000 51.252
-0.790 -0.809 0.000 6.619
0.000 0.000 1.000 3.377
0.000 0.000 0.000 1.000
    
```

Level system info: dynamic compensator available.



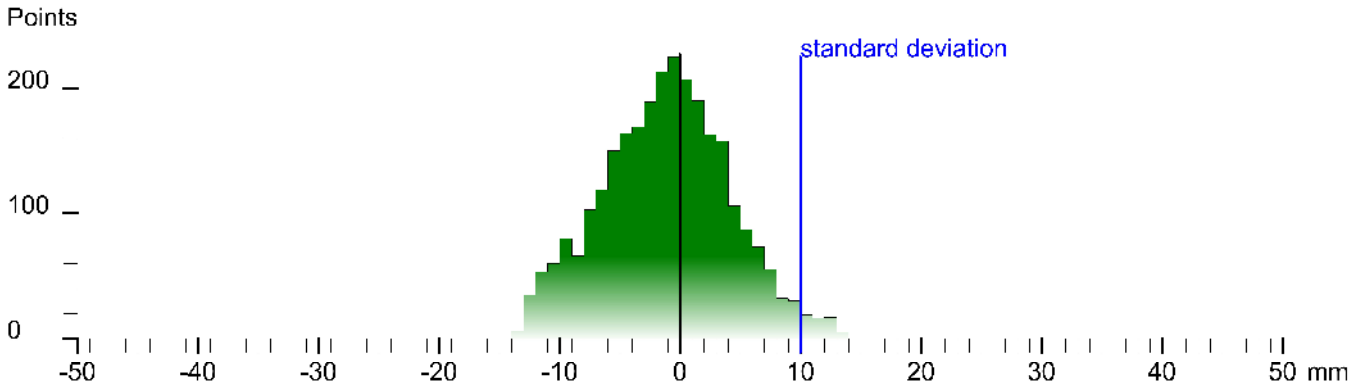
Scan position '2'

Scan position is member of group(s):
 Status registration '[102h] registered with cloud to cloud'
 Registration matrix:

```
-0.990601 -0.136779 0.000782 -6.3738 m
0.136779 -0.990601 0.000546 32.0129 m
0.000700 0.000648 1.000000 -2.3372 m
0.000000 0.000000 0.000000 1.0000
```

Result registration cloud to cloud standard deviation:10.0 mm

Deviation histogram



Scan '2'

Scanner 'Z+F IMAGER 5016' serial number '5016-0100' Firmware 9.0.3.6562-0
 Scan resolution 'High' quality 'Normal'

Metadata	Value
comment	
operator	

```
Sensor: 3100 *barome or transition rotation gps
Barometer: 0.970717 bar 380.264 m
nav translation: 32.5210 m 25.3262 m 359.5914 m accuracies: 25.9928 m 25.9928 m 0.0000 m
nav rotation: 0.0000 0.0000 0.0000 * 91.7690 accuracies: 0.0000 0.0000 15.0000
upside-down: no
GPS: lat:47.591019 long:23.770320 satellites:9 height:441.0m hddoa:0.0 vdcop:1.3m hacc:0.4m vacc:4.5 flags:G3 'stand alone 3D solution'
north:5274664.732 m east:708271.257 m zone:34T
Initial pre position (3-coo. tocoor)
-1.000 -0.000 0.000 -3.482
0.031 -1.000 0.000 30.020
0.000 0.000 1.000 -3.342
0.000 0.000 0.000 1.000
```

Level system info: dynamic compensator available.



Scan position '28'

Scan position is member of group(s):

Status registration '[102h] registered with cloud to cloud'

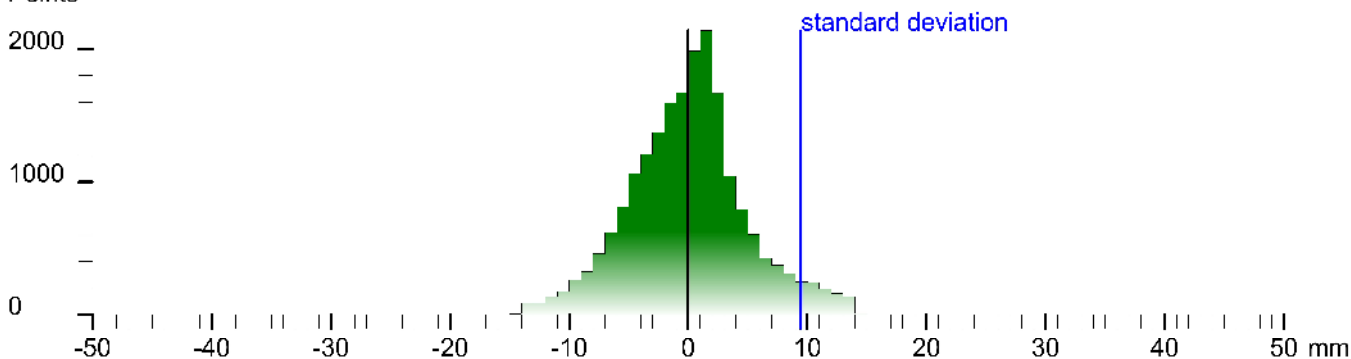
Registration matrix:

```
0.455158 -0.890411 0.000253 12.5152 m
0.890411 0.455158 0.000208 7.4167 m
-0.000300 0.000131 1.000000 0.8726 m
0.000000 0.000000 0.000000 1.0000
```

Result registration cloud to cloud standard deviation:9.5 mm

Deviation histogram

Points



Scan '28'

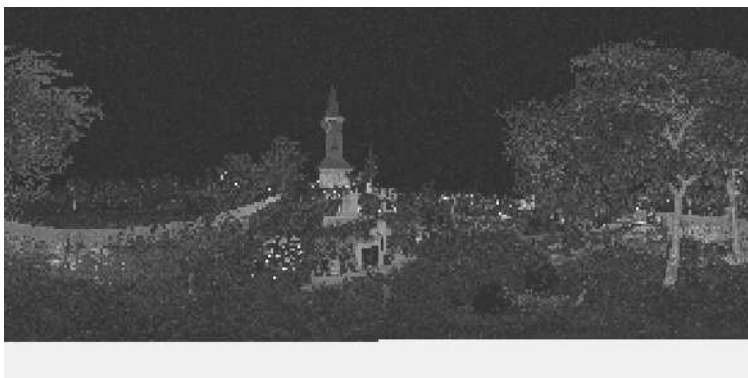
Scanner 'Z+F IMAGER 5016' serial number '5016-0100' Firmware 9.0.3.6562-0

Scan resolution 'High' quality 'Normal'

Metadata **Value**
comment
operator

```
Scan position: '148:28' member: '148:28' member: '28' type: 'Blue' resolution: '2160' Altitude: '1.000000' Initial position: '0.000000 0.000000 0.000000'
Sensor
sensors: 3100 * barometer transition rotation gps
Barometer: 0.974402 bar 328.55 m
nav translation: 27.3173 m 27.3472 m 328.3786 m accuracies: 24.6215 m 24.6215 m 0.0000 m
nav rotation: 0.0000 0.0000 298.6263 accuracies: 0.0000 0.0000 1s.0000
upside-down: no
GPS: lat:47.591705 long:23.770520 satellites:6 height:446.5m hddow:2.8 vdcop:3.7m hacc:8.5m vacc:13.0 flags:G3 's'anc'alone 3D solution'
north:5274511.230 m east:738287.160 m zone:34T
Initial pre position (3-coo. tocoor)
0.479 -0.878 0.000 50.763
0.870 0.478 0.000 9.503
0.000 0.000 1.000 -34.555
0.000 0.000 0.000 1.000
```

Level system info: dynamic compensator available.



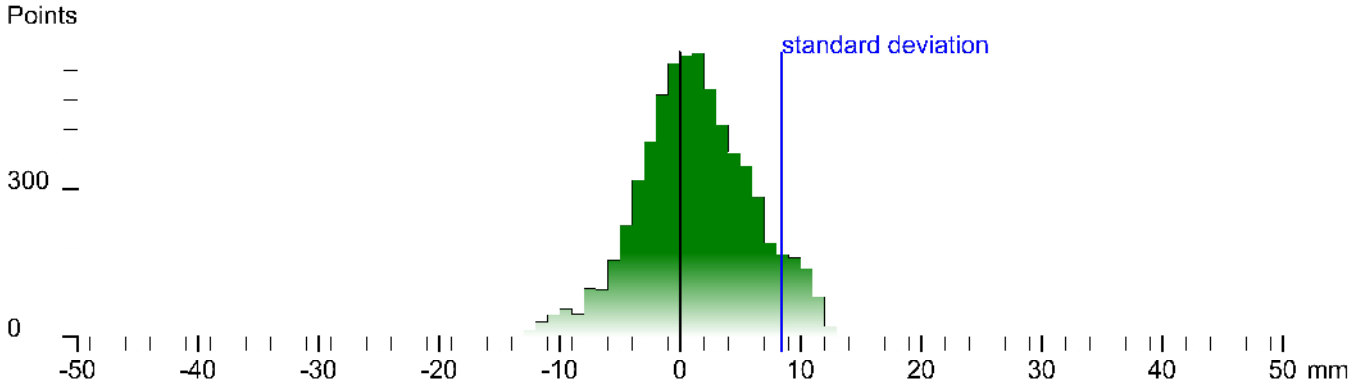
Scan position '3'

Scan position is member of group(s):
Status registration '[102h] registered with cloud to cloud'
Registration matrix:

```
0.973345 0.229347 0.000430 5.0942 m  
-0.229347 0.973345 0.000258 52.8150 m  
-0.000359 -0.000350 1.000000 -1.4352 m  
0.000000 0.000000 0.000000 1.0000
```

Result registration cloud to cloud standard deviation:8.4 mm

Deviation histogram



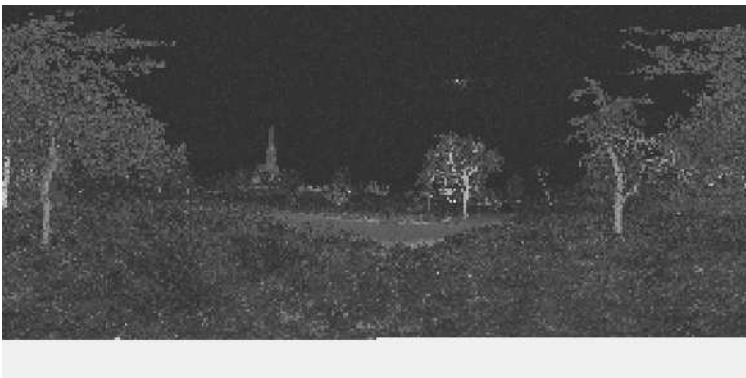
Scan '3'

Scanner 'Z+F IMAGER 5016' serial number '5016-0100' Firmware 9.0.3.6562-0
Scan resolution 'High' quality 'Normal'

Metadata **Value**
comment
operator

```
Scan comment: null  
Sensor  
sensors: 3100 *barometric transition rotation gps  
Barometer: 0.970658 bar 380.769 m  
nav translation: 30.7880 m 8.8227 m 360.4700 m accuracies: 21.2918 m 21.2918 m 0.00000 m  
nav rotation: 0.0000 0.0000 2.4619 accuracies: 0.0000 0.0000 15.0000  
upside-down: no  
GPS lat:47.592106 long:23.770489 satellites:6 height:442.3m hddos: 4 vdcop:2.6m hacc:4.4 m vacc:8.5 flags:G3 'stand alone 3D solution'  
north:5274985.634 m east:738282.558 m zone:34T  
Initial pre position (3-coo. tooor):  
0.976 0.216 0.000 7.804  
-0.216 0.976 0.000 51.240  
0.000 0.000 1.000 -2.457  
0.000 0.000 0.000 1.000
```

Level system info: dynamic compensator available.



Scan position '30'

Scan position is member of group(s):
 Status registration '[102h] registered with cloud to cloud'
 Registration matrix:

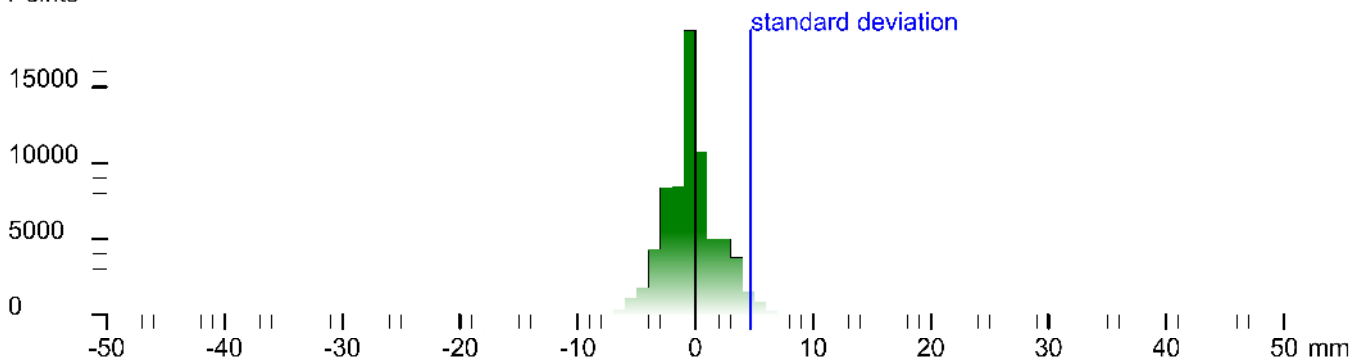
```

0.946230  0.323495  0.000602  39.1652 m
-0.323495  0.946230  0.000320  4.9267 m
-0.000466 -0.000498  1.000000  4.8952 m
0.000000  0.000000  0.000000  1.0000
    
```

Result registration cloud to cloud standard deviation:4.7 mm

Deviation histogram

Points



Scan '30'

Scanner 'Z+F IMAGER 5016' serial number '5016-0100' Firmware 9.0.3.6562-0
 Scan resolution 'High' quality 'Normal'

Metadata	Value
comment	
operator	

```

Scan comment: null
Sensor
sensors: 3096 *barometric transition rotation*
Barometer: 0.974050 bar 331.574 m
nav translation: 10.8187 m 4.8805 m 33.1310 m accuracies: 11.1627 m 11.1627 m 0.0000 m
nav rotation: 0.0000 0.0000 23.6003 accuracies: 0.0000 0.0000 15.0000
upside-down: no
Initial pre position: (Girdoor)
0.836 0.352 0.000 41.017
-0.352 0.836 0.000 9.400
0.000 0.000 1.000 -31.623
0.000 0.000 0.000 1.000
    
```

Level system info: dynamic compensator available.



Scan position '31'

Scan position is member of group(s):

Status registration '[102h] registered with cloud to cloud'

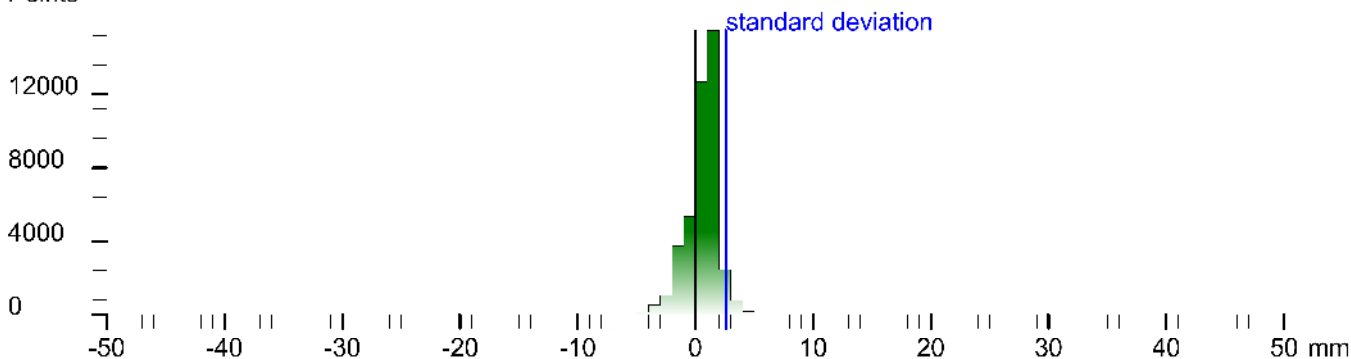
Registration matrix:

```
-0.490488 -0.871449 0.000287 40.2478 m  
0.871449 -0.490488 -0.000282 7.0179 m  
0.000386 0.000112 1.000000 4.8601 m  
0.000000 0.000000 0.000000 1.0000
```

Result registration cloud to cloud standard deviation:2.6 mm

Deviation histogram

Points



Scan '31'

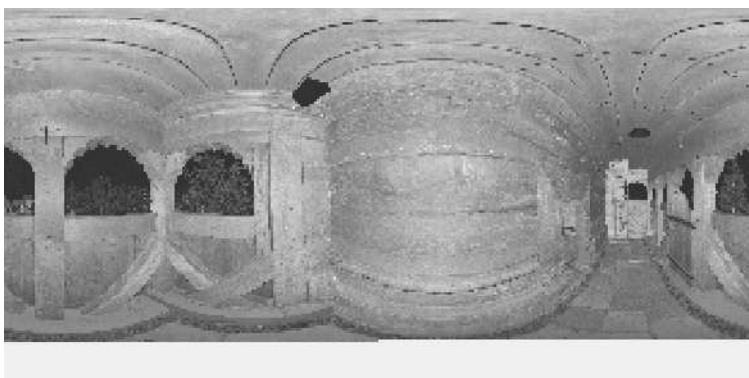
Scanner 'Z+F IMAGER 5016' serial number '5016-0100' Firmware 9.0.3.6562-0

Scan resolution 'High' quality 'Normal'

Metadata **Value**
comment
operator

```
Scan comment: null  
Sensor  
sensors: 3096 *barometric transition rotation*  
Barometer: 0.974114 bar 531.023 m  
nav translation: 1.7406 m 3.8906 m 331.2451 m accuracies: 7.2965 m 7.2965 m 0.0000 m  
nav rotation: 0.0000 0.0000 244.18 °/s accuracies: 0.0000 0.0000 1s.0000  
upside-down: no  
Initial pre position (Girdoor)  
-3.436 -0.900 0.000 42.757  
0.900 -0.436 0.000 -3.296  
0.000 0.000 1.000 -31.688  
0.000 0.000 0.000 1.000
```

Level system info: dynamic compensator available.



Scan position '32'

Scan position is member of group(s):

Status registration '[102h] registered with cloud to cloud'

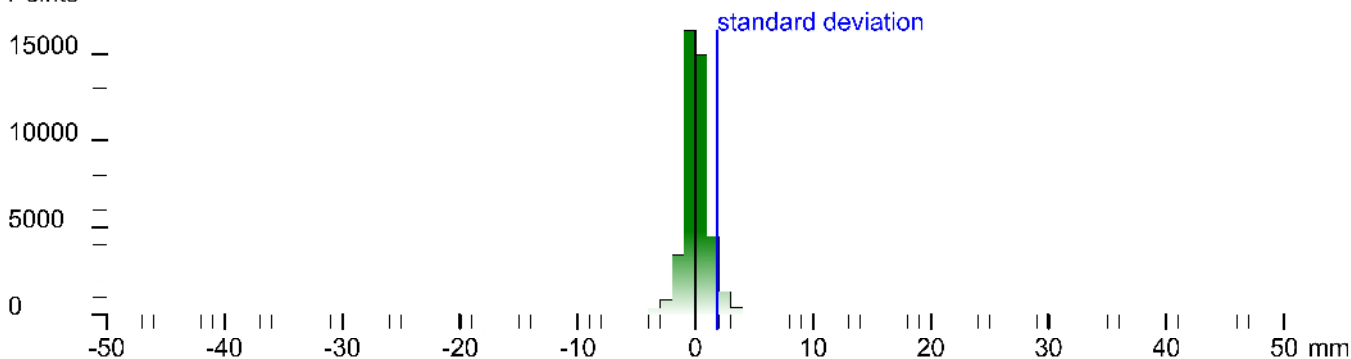
Registration matrix:

```
-0.995316  0.096678  0.000360  40.5311 m  
-0.096678 -0.995313 -0.002368  2.3939 m  
0.000129 -0.002392  0.999997  6.0805 m  
0.000000  0.000000  0.000000  1.0000
```

Result registration cloud to cloud standard deviation: 1.8 mm

Deviation histogram

Points



Scan '32'

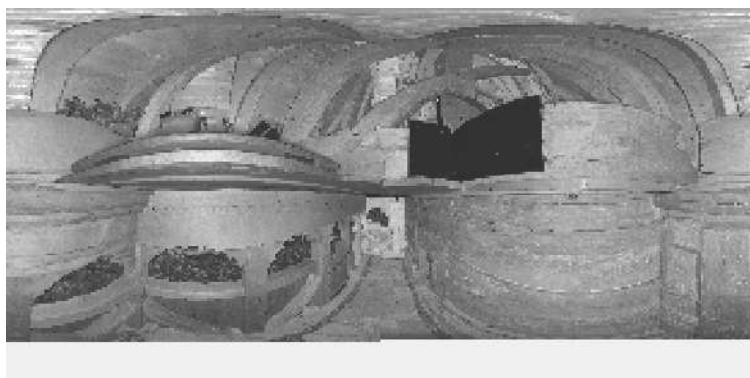
Scanner 'Z+F IMAGER 5016' serial number '5016-0100' Firmware 9.0.3.6562-0

Scan resolution 'High' quality 'Normal'

Metadata **Value**
comment
operator

```
Scan comment: null  
Sensor  
sensors: 3096 *barometric transition rotation*  
Barometer: 0.973976 bar 332.206 m  
nav translation: -3.8983 m -7.4038 m 33.5948 m accuracies: 8.9/88 m 9.9/88 m 0.0001 m  
nav rotation: 0.0000 0.0000 *63.0/75 accuracies: 0.0000 0.0000 1s.0000  
upside-down: no  
Initial pre position: (Girdoor)  
-3.957 0.281 0.000 38.918  
-0.291 -0.957 0.000 5.692  
0.000 0.000 1.000 -31.338  
0.000 0.000 0.000 1.000
```

Level system info: no information about the level system stored in the zfs header



Scan position '36'

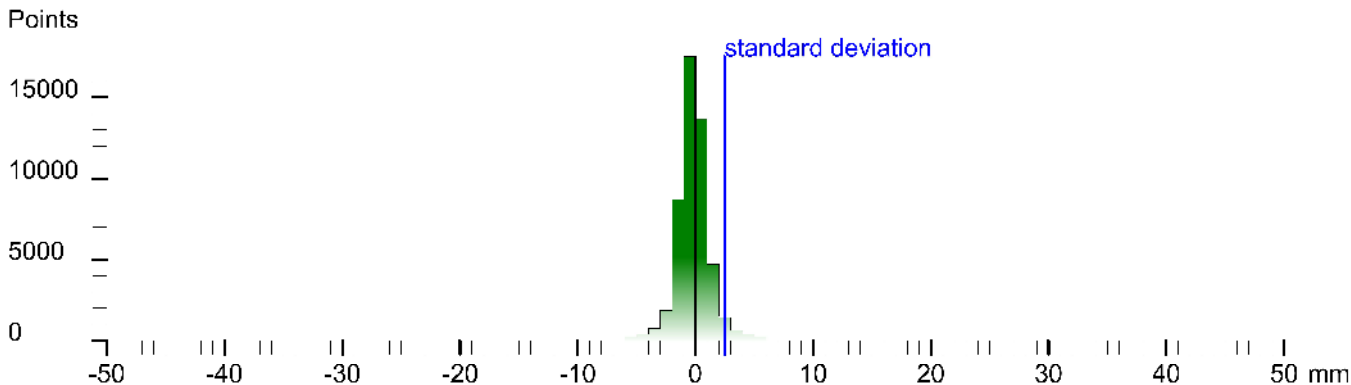
Scan position is member of group(s):
 Status registration '[102h] registered with cloud to cloud'
 Registration matrix:

```

0.176047  0.984382  0.001219  42.5446 m
-0.984382  0.176047  -0.000408  4.8192 m
-0.000616  -0.001128  0.999999  6.8924 m
0.000000  0.000000  0.000000  1.0000
    
```

Result registration cloud to cloud standard deviation: 2.5 mm

Deviation histogram



Scan '36'

Scanner 'Z+F IMAGER 5016' serial number '5016-0100' Firmware 9.0.3.6562-0
 Scan resolution 'High' quality 'Normal'

Metadata Value

```

comment:
operator:
Sensor:
sensors: 3096 *barome or transition rotation*
Barometer: 0.973849 bar 333.303 m
nav translation: 3.961 m -0.4277 m 332.8533 m accuracies: 0.5060 m 0.5060 m 0.0000 m
nav rotation: 0.0000 0.0000 75.5834 accuracies: 0.0000 0.0000 15.0000
upside-down: no
Initial pre position: (Girdoor)
0.98 0.98 0.00 45.633
-0.98 0.188 0.000 -2.699
0.000 0.000 1.000 -30.050
0.000 0.000 0.000 1.000
    
```

Level system info: dynamic compensator available.



Scan position '37'

Scan position is member of group(s):

Status registration '[102h] registered with cloud to cloud'

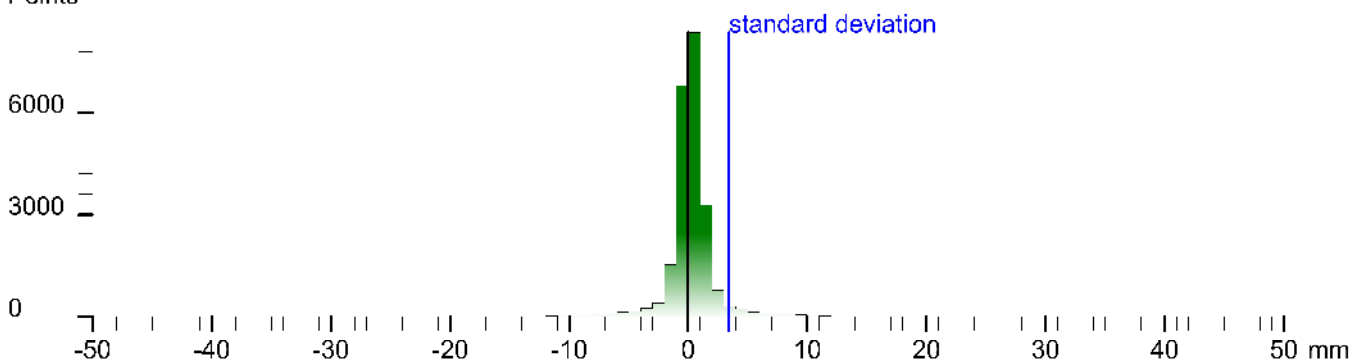
Registration matrix:

```
-0.998697  0.051037  0.000391  40.0263 m  
-0.051037 -0.998697 -0.000842  3.3234 m  
0.000348 -0.000861  1.000000  6.9318 m  
0.000000  0.000000  0.000000  1.0000
```

Result registration cloud to cloud standard deviation:3.4 mm

Deviation histogram

Points



Scan '37'

Scanner 'Z+F IMAGER 5016' serial number '5016-0100' Firmware 9.0.3.6562-0

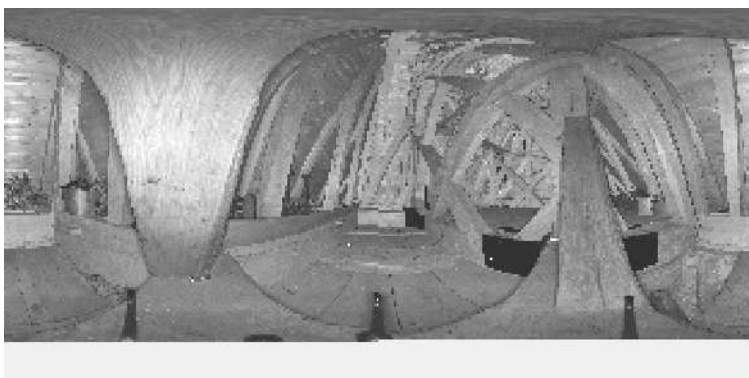
Scan resolution 'High' quality 'Normal'

Metadata **Value**
comment
operator

```
Scan comment: '14082016 10:33' filename: '14082016 10:33' scanid: '37' type: 'Blue' resolution: '2048' attached: 'Vital' cloud: 'True' quality: 'Normal' date: '160810' attached to: 'Vital' cloud: 'False' project: 'data' comment: 'in 4km status: 20' type: 'Scan' position: 'operator' (Scan resolution: 'Normal' quality: 'Normal') for: 'Z+F IMAGER 5016' serial: '5016-0100' date: '2016-08-10'
```

Sensors: 3096 'barometric transition rotation'
Barometer: 0.973828 bar 333.48 m
nav translation: -2.8910 m 3.5907 m 333.1318 m accuracies: 0.6717 m 0.6717 m 0.000 m
nav rotation: 0.0000 0.0000 0.0000 accuracies: 0.0000 0.0000 1s.0000
upside-down: no
Initial pre position: (Girdoor)
-3.945 0.327 0.000 42.712
-0.327 -0.945 0.000 -1.764
0.000 0.000 1.000 -29.798
0.000 0.000 0.000 1.000

Level system info: dynamic compensator available.



Scan position '38'

Scan position is member of group(s):

Status registration '[102h] registered with cloud to cloud'

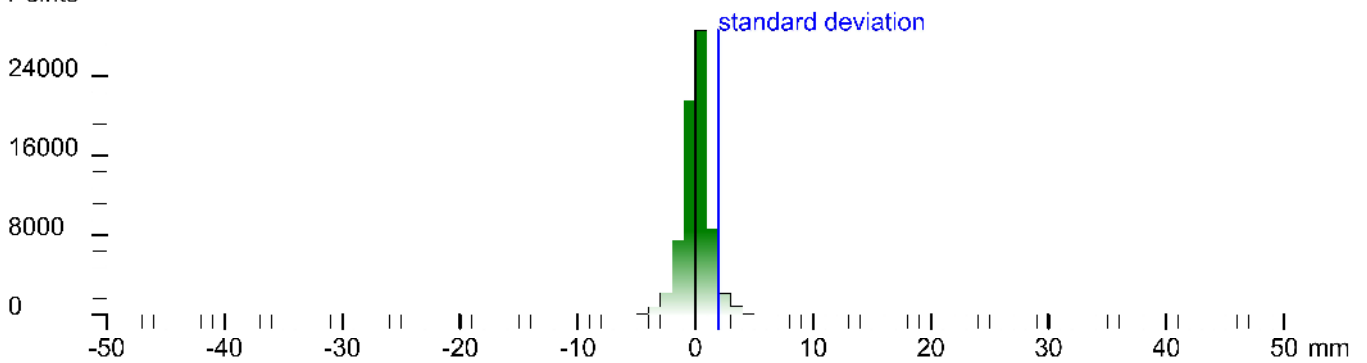
Registration matrix:

```
-0.714763  -0.699367  0.001409  40.9835 m
 0.699367  -0.714764  -0.000502  6.0132 m
 0.001359  0.000627  0.999999  6.8403 m
 0.000000  0.000000  0.000000  1.0000
```

Result registration cloud to cloud standard deviation: 1.9 mm

Deviation histogram

Points



Scan '38'

Scanner 'Z+F IMAGER 5016' serial number '5016-0100' Firmware 9.0.3.6562-0

Scan resolution 'High' quality 'Normal'

Metadata **Value**
comment
operator

```
Scan position: '38' - name: '148-158-168-178-188-198-208-218-228-238-248-258-268-278-288-298-308-318-328-338-348-358-368-378-388-398-408-418-428-438-448-458-468-478-488-498-508-518-528-538-548-558-568-578-588-598-608-618-628-638-648-658-668-678-688-698-708-718-728-738-748-758-768-778-788-798-808-818-828-838-848-858-868-878-888-898-908-918-928-938-948-958-968-978-988-998-1008-1018-1028-1038-1048-1058-1068-1078-1088-1098-1108-1118-1128-1138-1148-1158-1168-1178-1188-1198-1208-1218-1228-1238-1248-1258-1268-1278-1288-1298-1308-1318-1328-1338-1348-1358-1368-1378-1388-1398-1408-1418-1428-1438-1448-1458-1468-1478-1488-1498-1508-1518-1528-1538-1548-1558-1568-1578-1588-1598-1608-1618-1628-1638-1648-1658-1668-1678-1688-1698-1708-1718-1728-1738-1748-1758-1768-1778-1788-1798-1808-1818-1828-1838-1848-1858-1868-1878-1888-1898-1908-1918-1928-1938-1948-1958-1968-1978-1988-1998-2008-2018-2028-2038-2048-2058-2068-2078-2088-2098-2108-2118-2128-2138-2148-2158-2168-2178-2188-2198-2208-2218-2228-2238-2248-2258-2268-2278-2288-2298-2308-2318-2328-2338-2348-2358-2368-2378-2388-2398-2408-2418-2428-2438-2448-2458-2468-2478-2488-2498-2508-2518-2528-2538-2548-2558-2568-2578-2588-2598-2608-2618-2628-2638-2648-2658-2668-2678-2688-2698-2708-2718-2728-2738-2748-2758-2768-2778-2788-2798-2808-2818-2828-2838-2848-2858-2868-2878-2888-2898-2908-2918-2928-2938-2948-2958-2968-2978-2988-2998-3008-3018-3028-3038-3048-3058-3068-3078-3088-3098-3108-3118-3128-3138-3148-3158-3168-3178-3188-3198-3208-3218-3228-3238-3248-3258-3268-3278-3288-3298-3308-3318-3328-3338-3348-3358-3368-3378-3388-3398-3408-3418-3428-3438-3448-3458-3468-3478-3488-3498-3508-3518-3528-3538-3548-3558-3568-3578-3588-3598-3608-3618-3628-3638-3648-3658-3668-3678-3688-3698-3708-3718-3728-3738-3748-3758-3768-3778-3788-3798-3808-3818-3828-3838-3848-3858-3868-3878-3888-3898-3908-3918-3928-3938-3948-3958-3968-3978-3988-3998-4008-4018-4028-4038-4048-4058-4068-4078-4088-4098-4108-4118-4128-4138-4148-4158-4168-4178-4188-4198-4208-4218-4228-4238-4248-4258-4268-4278-4288-4298-4308-4318-4328-4338-4348-4358-4368-4378-4388-4398-4408-4418-4428-4438-4448-4458-4468-4478-4488-4498-4508-4518-4528-4538-4548-4558-4568-4578-4588-4598-4608-4618-4628-4638-4648-4658-4668-4678-4688-4698-4708-4718-4728-4738-4748-4758-4768-4778-4788-4798-4808-4818-4828-4838-4848-4858-4868-4878-4888-4898-4908-4918-4928-4938-4948-4958-4968-4978-4988-4998-5008-5018-5028-5038-5048-5058-5068-5078-5088-5098-5108-5118-5128-5138-5148-5158-5168-5178-5188-5198-5208-5218-5228-5238-5248-5258-5268-5278-5288-5298-5308-5318-5328-5338-5348-5358-5368-5378-5388-5398-5408-5418-5428-5438-5448-5458-5468-5478-5488-5498-5508-5518-5528-5538-5548-5558-5568-5578-5588-5598-5608-5618-5628-5638-5648-5658-5668-5678-5688-5698-5708-5718-5728-5738-5748-5758-5768-5778-5788-5798-5808-5818-5828-5838-5848-5858-5868-5878-5888-5898-5908-5918-5928-5938-5948-5958-5968-5978-5988-5998-6008-6018-6028-6038-6048-6058-6068-6078-6088-6098-6108-6118-6128-6138-6148-6158-6168-6178-6188-6198-6208-6218-6228-6238-6248-6258-6268-6278-6288-6298-6308-6318-6328-6338-6348-6358-6368-6378-6388-6398-6408-6418-6428-6438-6448-6458-6468-6478-6488-6498-6508-6518-6528-6538-6548-6558-6568-6578-6588-6598-6608-6618-6628-6638-6648-6658-6668-6678-6688-6698-6708-6718-6728-6738-6748-6758-6768-6778-6788-6798-6808-6818-6828-6838-6848-6858-6868-6878-6888-6898-6908-6918-6928-6938-6948-6958-6968-6978-6988-6998-7008-7018-7028-7038-7048-7058-7068-7078-7088-7098-7108-7118-7128-7138-7148-7158-7168-7178-7188-7198-7208-7218-7228-7238-7248-7258-7268-7278-7288-7298-7308-7318-7328-7338-7348-7358-7368-7378-7388-7398-7408-7418-7428-7438-7448-7458-7468-7478-7488-7498-7508-7518-7528-7538-7548-7558-7568-7578-7588-7598-7608-7618-7628-7638-7648-7658-7668-7678-7688-7698-7708-7718-7728-7738-7748-7758-7768-7778-7788-7798-7808-7818-7828-7838-7848-7858-7868-7878-7888-7898-7908-7918-7928-7938-7948-7958-7968-7978-7988-7998-8008-8018-8028-8038-8048-8058-8068-8078-8088-8098-8108-8118-8128-8138-8148-8158-8168-8178-8188-8198-8208-8218-8228-8238-8248-8258-8268-8278-8288-8298-8308-8318-8328-8338-8348-8358-8368-8378-8388-8398-8408-8418-8428-8438-8448-8458-8468-8478-8488-8498-8508-8518-8528-8538-8548-8558-8568-8578-8588-8598-8608-8618-8628-8638-8648-8658-8668-8678-8688-8698-8708-8718-8728-8738-8748-8758-8768-8778-8788-8798-8808-8818-8828-8838-8848-8858-8868-8878-8888-8898-8908-8918-8928-8938-8948-8958-8968-8978-8988-8998-9008-9018-9028-9038-9048-9058-9068-9078-9088-9098-9108-9118-9128-9138-9148-9158-9168-9178-9188-9198-9208-9218-9228-9238-9248-9258-9268-9278-9288-9298-9308-9318-9328-9338-9348-9358-9368-9378-9388-9398-9408-9418-9428-9438-9448-9458-9468-9478-9488-9498-9508-9518-9528-9538-9548-9558-9568-9578-9588-9598-9608-9618-9628-9638-9648-9658-9668-9678-9688-9698-9708-9718-9728-9738-9748-9758-9768-9778-9788-9798-9808-9818-9828-9838-9848-9858-9868-9878-9888-9898-9908-9918-9928-9938-9948-9958-9968-9978-9988-9998-10008-10018-10028-10038-10048-10058-10068-10078-10088-10098-10108-10118-10128-10138-10148-10158-10168-10178-10188-10198-10208-10218-10228-10238-10248-10258-10268-10278-10288-10298-10308-10318-10328-10338-10348-10358-10368-10378-10388-10398-10408-10418-10428-10438-10448-10458-10468-10478-10488-10498-10508-10518-10528-10538-10548-10558-10568-10578-10588-10598-10608-10618-10628-10638-10648-10658-10668-10678-10688-10698-10708-10718-10728-10738-10748-10758-10768-10778-10788-10798-10808-10818-10828-10838-10848-10858-10868-10878-10888-10898-10908-10918-10928-10938-10948-10958-10968-10978-10988-10998-11008-11018-11028-11038-11048-11058-11068-11078-11088-11098-11108-11118-11128-11138-11148-11158-11168-11178-11188-11198-11208-11218-11228-11238-11248-11258-11268-11278-11288-11298-11308-11318-11328-11338-11348-11358-11368-11378-11388-11398-11408-11418-11428-11438-11448-11458-11468-11478-11488-11498-11508-11518-11528-11538-11548-11558-11568-11578-11588-11598-11608-11618-11628-11638-11648-11658-11668-11678-11688-11698-11708-11718-11728-11738-11748-11758-11768-11778-11788-11798-11808-11818-11828-11838-11848-11858-11868-11878-11888-11898-11908-11918-11928-11938-11948-11958-11968-11978-11988-11998-12008-12018-12028-12038-12048-12058-12068-12078-12088-12098-12108-12118-12128-12138-12148-12158-12168-12178-12188-12198-12208-12218-12228-12238-12248-12258-12268-12278-12288-12298-12308-12318-12328-12338-12348-12358-12368-12378-12388-12398-12408-12418-12428-12438-12448-12458-12468-12478-12488-12498-12508-12518-12528-12538-12548-12558-12568-12578-12588-12598-12608-12618-12628-12638-12648-12658-12668-12678-12688-12698-12708-12718-12728-12738-12748-12758-12768-12778-12788-12798-12808-12818-12828-12838-12848-12858-12868-12878-12888-12898-12908-12918-12928-12938-12948-12958-12968-12978-12988-12998-13008-13018-13028-13038-13048-13058-13068-13078-13088-13098-13108-13118-13128-13138-13148-13158-13168-13178-13188-13198-13208-13218-13228-13238-13248-13258-13268-13278-13288-13298-13308-13318-13328-13338-13348-13358-13368-13378-13388-13398-13408-13418-13428-13438-13448-13458-13468-13478-13488-13498-13508-13518-13528-13538-13548-13558-13568-13578-13588-13598-13608-13618-13628-13638-13648-13658-13668-13678-13688-13698-13708-13718-13728-13738-13748-13758-13768-13778-13788-13798-13808-13818-13828-13838-13848-13858-13868-13878-13888-13898-13908-13918-13928-13938-13948-13958-13968-13978-13988-13998-14008-14018-14028-14038-14048-14058-14068-14078-14088-14098-14108-14118-14128-14138-14148-14158-14168-14178-14188-14198-14208-14218-14228-14238-14248-14258-14268-14278-14288-14298-14308-14318-14328-14338-14348-14358-14368-14378-14388-14398-14408-14418-14428-14438-14448-14458-14468-14478-14488-14498-14508-14518-14528-14538-14548-14558-14568-14578-14588-14598-14608-14618-14628-14638-14648-14658-14668-14678-14688-14698-14708-14718-14728-14738-14748-14758-14768-14778-14788-14798-14808-14818-14828-14838-14848-14858-14868-14878-14888-14898-14908-14918-14928-14938-14948-14958-14968-14978-14988-14998-15008-15018-15028-15038-15048-15058-15068-15078-15088-15098-15108-15118-15128-15138-15148-15158-15168-15178-15188-15198-15208-15218-15228-15238-15248-15258-15268-15278-15288-15298-15308-15318-15328-15338-15348-15358-15368-15378-15388-15398-15408-15418-15428-15438-15448-15458-15468-15478-15488-15498-15508-15518-15528-15538-15548-15558-15568-15578-15588-15598-15608-15618-15628-15638-15648-15658-15668-15678-15688-15698-15708-15718-15728-15738-15748-15758-15768-15778-15788-15798-15808-15818-15828-15838-15848-15858-15868-15878-15888-15898-15908-15918-15928-15938-15948-15958-15968-15978-15988-15998-16008-16018-16028-16038-16048-16058-16068-16078-16088-16098-16108-16118-16128-16138-16148-16158-16168-16178-16188-16198-16208-16218-16228-16238-16248-16258-16268-16278-16288-16298-16308-16318-16328-16338-16348-16358-16368-16378-16388-16398-16408-16418-16428-16438-16448-16458-16468-16478-16488-16498-16508-16518-16528-16538-16548-16558-16568-16578-16588-16598-16608-16618-16628-16638-16648-16658-16668-16678-16688-16698-16708-16718-16728-16738-16748-16758-16768-16778-16788-16798-16808-16818-16828-16838-16848-16858-16868-16878-16888-16898-16908-16918-16928-16938-16948-16958-16968-16978-16988-16998-17008-17018-17028-17038-17048-17058-17068-17078-17088-17098-17108-17118-17128-17138-17148-17158-17168-17178-17188-17198-17208-17218-17228-17238-17248-17258-17268-17278-17288-17298-17308-17318-17328-17338-17348-17358-17368-17378-17388-17398-17408-17418-17428-17438-17448-17458-17468-17478-17488-17498-17508-17518-17528-17538-17548-17558-17568-17578-17588-17598-17608-17618-17628-17638-17648-17658-17668-17678-17688-17698-17708-17718-17728-17738-17748-17758-17768-17778-17788-17798-17808-17818-17828-17838-17848-17858-17868-17878-17888-17898-17908-17918-17928-17938-17948-17958-17968-17978-17988-17998-18008-18018-18028-18038-18048-18058-18068-18078-18088-18098-18108-18118-18128-18138-18148-18158-18168-18178-18188-18198-18208-18218-18228-18238-18248-18258-18268-18278-18288-18298-18308-18318-18328-18338-18348-18358-18368-18378-18388-18398-18408-18418-18428-18438-18448-18458-18468-18478-18488-18498-18508-18518-18528-18538-18548-18558-18568-18578-18588-18598-18608-18618-18628-18638-18648-18658-18668-18678-18688-18698-18708-18718-18728-18738-18748-18758-18768-18778-18788-18798-18808-18818-18828-18838-18848-18858-18868-18878-18888-18898-18908-18918-18928-18938-18948-18958-18968-18978-18988-18998-19008-19018-19028-19038-19048-19058-19068-19078-19088-19098-19108-19118-19128-19138-19148-19158-19168-19178-19188-19198-19208-19218-19228-19238-19248-19258-19268-19278-19288-19298-19308-19318-19328-19338-19348-19358-19368-19378-19388-19398-19408-19418-19428-19438-19448-19458-19468-19478-19488-19498-19508-19518-19528-19538-19548-19558-19568-19578-19588-19598-19608-19618-19628-19638-19648-19658-19668-19678-19688-19698-19708-19718-19728-19738-19748-19758-19768-19778-19788-19798-19808-19818-19828-19838-19848-19858-19868-19878-19888-19898-19908-19918-19928-19938-19948-19958-19968-19978-19988-19998-20008-20018-20028-20038-20048-20058-20068-20078-20088-20098-20108-20118-20128-20138-20148-20158-20168-20178-20188-20198-20208-20218-20228-20238-20248-20258-20268-20278-20288-20298-20308-20318-20328-20338-20348-20358-20368-20378-20388-20398-20408-20418-20428-20438-20448-20458-20468-20478-20488-20498-20508-20518-20528-20538-20548-20558-20568-20578-20588-20598-20608-20618-20628-20638-20648-20658-20668-20678-20688-20698-20708-20718-20728-20738-20748-20758-20768-20778-20788-20798-20808-20818-20828-20838-20848-20858-20868-20878-20888-20898-20908-20918-20928-20938-20948-20958-20968-20978-20988-20998-21008-21018-21028-21038-
```


Scan position '4'

Scan position is member of group(s):

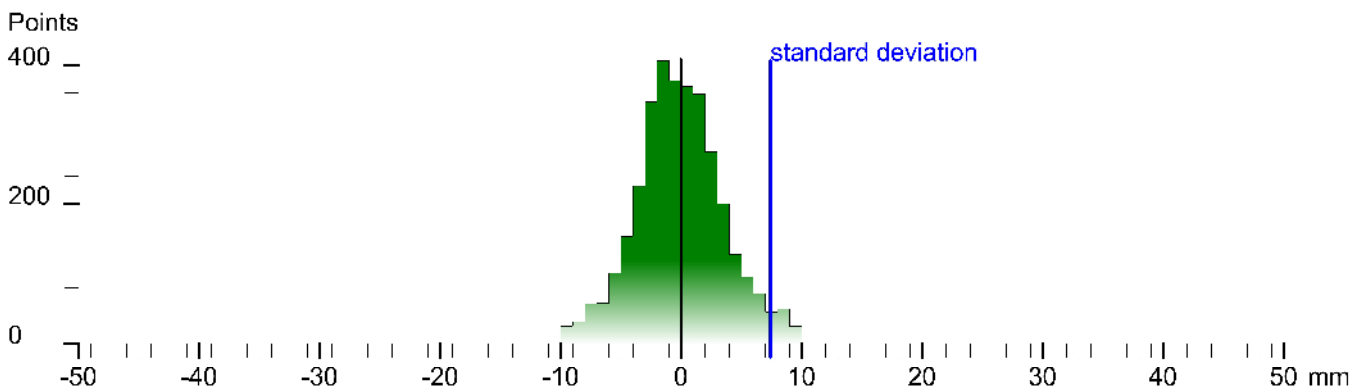
Status registration '[102h] registered with cloud to cloud'

Registration matrix:

```
0.991485  0.130226  0.000596  30.5766 m
-0.130226 0.991485 -0.000009  71.0810 m
-0.000592 -0.000069 1.000000   5.1983 m
0.000000  0.000000  0.000000   1.0000
```

Result registration cloud to cloud standard deviation: 7.4 mm

Deviation histogram



Scan '4'

Scanner 'Z+F IMAGER 5016' serial number '5016-0100' Firmware 9.0.3.6562-0

Scan resolution 'High' quality 'Normal'

Metadata	Value
comment	
operator	

```
Sensor
sensors: 3100 *barometer transition rotation gps
Barometer: 0.969973 bar 388.875 m
nav translation: 30.4840 m 10.1351 m 366.*31* m accuracies: 31.1771 m 31.1771 m 0.0001 m
nav rotation: 0.0000 0.0000 6.9298 accuracies: 0.0300 0.0000 15.0000
upside-down: no
GPS lat: 47.592251 long: 23.770872 satellites: 6 height: 449.2m hddop: .5 vdcop: 3.0m hacc: 3.8-m vacc: 7.0 flags: G3 'stand alone 3D solution'
north: 5274702.772 m east: 7383.3803 m zone: 34T
Initial pre position (3-coor):
0.993 0.121 0.000 36.018
-0.121 0.993 0.000 66.362
0.000 0.000 1.000 3.157
0.000 0.000 0.000 1.000
```

Level system info: dynamic compensator available.



Scan position '43'

Scan position is member of group(s):

Status registration '[102h] registered with cloud to cloud'

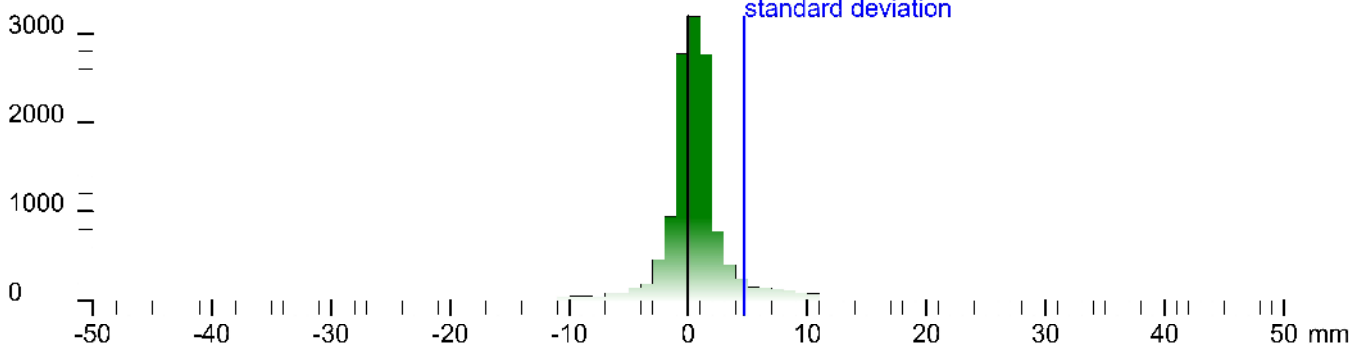
Registration matrix:

```
0.997279 -0.073725 0.001093 44.6535 m
0.073725 0.997279 -0.000276 7.3824 m
-0.001070 0.000355 0.999999 8.3696 m
0.000000 0.000000 0.000000 1.0000
```

Result registration cloud to cloud standard deviation:4.7 mm

Deviation histogram

Points



Scan '43'

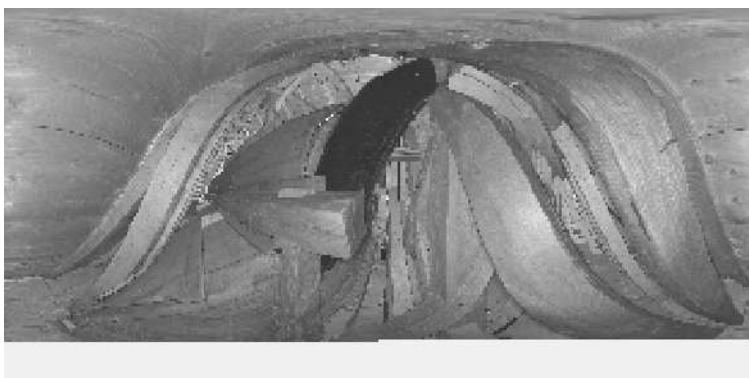
Scanner 'Z+F IMAGER 5016' serial number '5016-0100' Firmware 9.0.3.6562-0

Scan resolution 'High' quality 'Normal'

Metadata	Value
comment	
operator	

```
Scan position: '43' - name: '143-43' - status: '45' - type: 'Blue' - resolution: 'High' - quality: 'Normal' - registration: 'Cloud to Cloud' - registration matrix: '0.997279 -0.073725 0.001093 44.6535 m 0.073725 0.997279 -0.000276 7.3824 m -0.001070 0.000355 0.999999 8.3696 m 0.000000 0.000000 0.000000 1.0000'
Sensor
sensors: 3096 'barometric transition rotation'
Barometer: 0.973573 bar 335.877 m
nav translation: 2.8170 m 1.0419 m 335.0842 m accuracies: 6.65/4 m 6.65/4 m 0.0001 m
nav rotation: 0.0000 0.0000 4.7198 accuracies: 0.0300 0.0000 15.0000
upside-down: no
Initial pre position: (Girdoor)
0.997 0.082 0.000 48.876
-0.082 0.997 0.000 -0.888
0.000 0.000 1.000 -27.250
0.000 0.000 0.000 1.000
```

Level system info: dynamic compensator available.



Scan position '46'

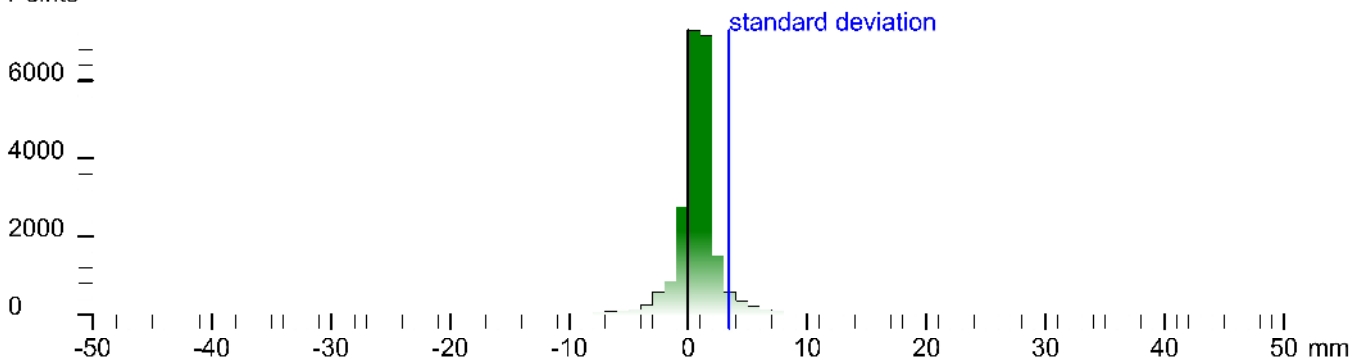
Scan position is member of group(s):
 Status registration '[102h] registered with cloud to cloud'
 Registration matrix:

```
-0.643456  0.765482  0.001810  47.5198 m
-0.765484 -0.643456 -0.001102  5.2428 m
 0.000321 -0.002095  0.999998  11.0594 m
 0.000000  0.000000  0.000000  1.0000
```

Result registration cloud to cloud standard deviation:3.4 mm

Deviation histogram

Points



Scan '46'

Scanner 'Z+F IMAGER 5016' serial number '5016-0100' Firmware 9.0.3.6562-0
 Scan resolution 'High' quality 'Normal'

Metadata **Value**
comment
operator

```
Scan position: '46' [102h] registered with cloud to cloud
Sensor
sensors: 3100 *barome or transition rotation gps
Barometer: 0.973259 bar 338.374 m
nav translation: 0.0000 m 0.0000 m 338.0000 m accuracies: 5.1000 m 5.1000 m 3.0000 m
nav rotation: 0.0000 0.0000 0.0000 accuracies: 0.0000 0.0000 1s.0000
upside-down: no
GPS lat:47.591696 long:23.770960 satellites:3 height:451.3m hdop:3.8 vdcpr:1.0m hacc:6.2m vacc:10.4 flags:G2 's same sbrno 2D solution'
north:5274510.269 m east:708379.611 m zone:34T
Initial pre position (0:indoor)
-0.589 0.808 0.000 45.777
-0.808 -0.589 0.000 8.247
0.000 0.000 1.000 -24.983
0.000 0.000 0.000 1.000
```

Level system info: no information about the level system stored in the zfs header



Scan position '5'

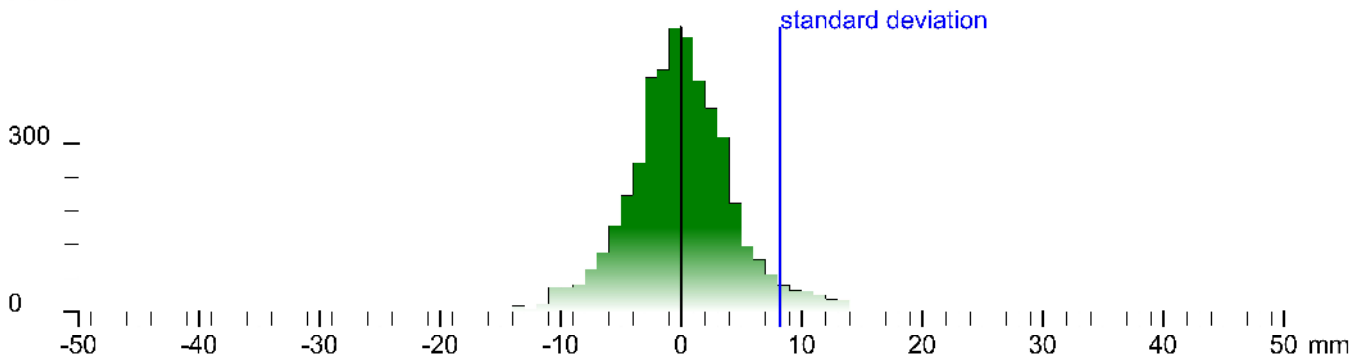
Scan position is member of group(s):
 Status registration '[102h] registered with cloud to cloud'
 Registration matrix:

```
-0.256234 -0.966615 0.000259 65.0633 m
0.966615 -0.256234 0.000227 68.7317 m
-0.000153 0.000309 1.000000 9.8262 m
0.000000 0.000000 0.000000 1.0000
```

Result registration cloud to cloud standard deviation:8.2 mm

Deviation histogram

Points



Scan '5'

Scanner 'Z+F IMAGER 5016' serial number '5016-0100' Firmware 9.0.3.6562-0
 Scan resolution 'High' quality 'Normal'

Metadata **Value**
comment
operator

```
Scan comment: null LPS:blue:303 m:angle:148:50 sample:50 spin:0 Barometer:Bar (2nd Attached) Value:0.966615 Accuracy:0.000000 15.0000  

Sensor  

sensors: 3100 *barometer transition rotation gps  

Barometer: 0.966615 bar 370.846 m  

nav translation: 37.0759 m -19.7503 m 373.102 m accuracies: 26.3273 m 26.3273 m 0.0000 m  

nav rotation: 0.0000 0.0000 253.5673 accuracies: 0.0000 0.0000 15.0000  

upside-down: no  

GPS:lat:47.592201 long:23.771333 satellites:7 height:456.6m hddo:0.3 vdcpl:2.3m hacc:0.3-m vacco:6.2 flags:G3 stand alone 3D solution  

north:5274988.517 m east:708346.128 m zcorr:34T  

Initial pre position (3-coo. tocoor)  

-0.281 -0.860 0.000 71.324  

0.980 -0.281 0.000 64.000  

0.000 0.000 1.000 7.468  

0.000 0.000 0.000 1.000
```

Level system info: dynamic compensator available.



Scan position '53'

Scan position is member of group(s):

Status registration '[102h] registered with cloud to cloud'

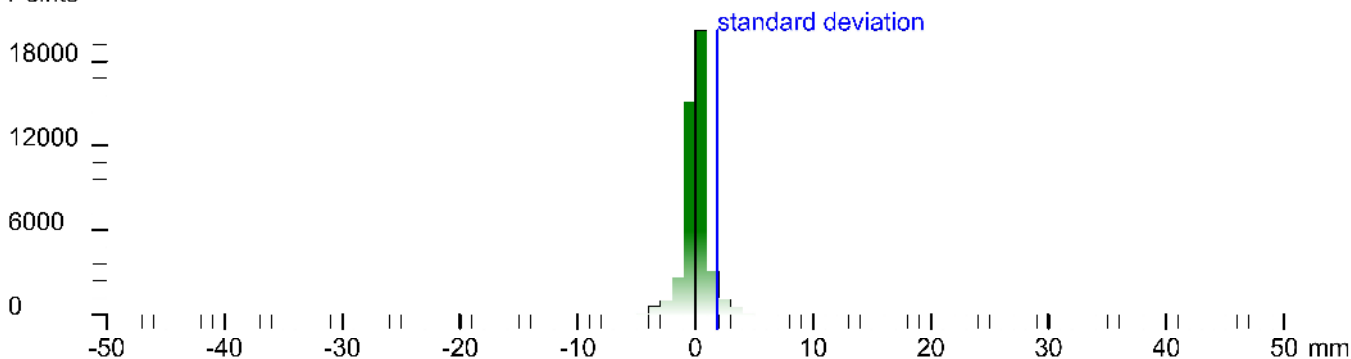
Registration matrix:

```
-0.629959  0.776629 -0.000794  43.4040 m  
-0.776629 -0.629959 -0.000425  3.3338 m  
-0.000830  0.000349  1.000000  4.5090 m  
0.000000  0.000000  0.000000  1.0000
```

Result registration cloud to cloud standard deviation: 1.9 mm

Deviation histogram

Points



Scan '53'

Scanner 'Z+F IMAGER 5016' serial number '5016-0100' Firmware 9.0.3.6562-0

Scan resolution 'High' quality 'Normal'

Metadata **Value**
comment
operator

```
Scan comment: null  
Sensor  
sensors: 3096 *barometric transition rotation*  
Barometer: 0.973860 bar 334.829 m  
nav translation: 3.281 m 2.1106 m 334.4069 m accuracies: 7.1520 m 7.1520 m 0.0000 m  
nav rotation: 0.0000 0.0000 0.0000 *Z_fsc0s accuracies: 0.0000 0.0000 15.0000  
upside-down: no  
Initial pre position: (Girdoor)  
-3.608 0.783 0.000 52.213  
-0.793 -0.609 0.000 2.310  
0.000 0.000 1.000 -28.527  
0.000 0.000 0.000 1.000
```

Level system info: no information about the level system stored in the zfs header



Scan position '54'

Scan position is member of group(s):

Status registration '[102h] registered with cloud to cloud'

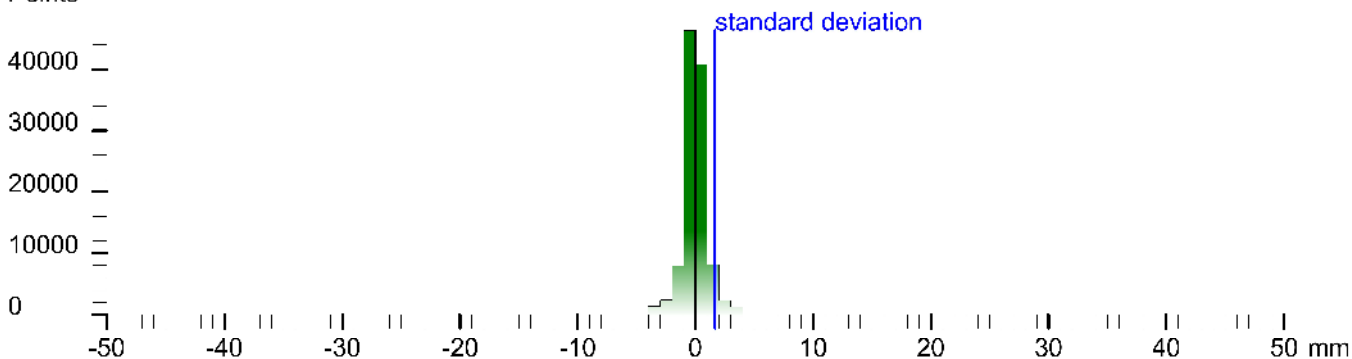
Registration matrix:

```
-0.340474 -0.940254 -0.001013 43.2417 m  
0.940255 -0.340474 -0.000377 6.9267 m  
0.000009 -0.001081 0.999999 4.4810 m  
0.000000 0.000000 0.000000 1.0000
```

Result registration cloud to cloud standard deviation: 1.7 mm

Deviation histogram

Points



Scan '54'

Scanner 'Z+F IMAGER 5016' serial number '5016-0100' Firmware 9.0.3.6562-0

Scan resolution 'High' quality 'Normal'

Metadata **Value**
comment
operator

```
Scan comment: 'Z+F IMAGER 5016' serial number '5016-0100' Firmware 9.0.3.6562-0  
Sensor  
sensors: 3096 '*barometric transition rotation'  
Barometer: 0.973598 bar 335.455 m  
nav translation: -3.1988 m 3.1277 m 335.7368 m accuracies: 5.3159 m 5.3159 m 0.0000 m  
nav rotation: 0.0000 0.0000 248.2200 accuracies: 0.0000 0.0000 1s.0000  
upside-down: no  
Initial pre position: (0 indoor)  
-3.371 -0.928 0.000 51.774  
0.929 -0.371 0.000 2.434  
0.000 0.000 1.000 -27.497  
0.000 0.000 0.000 1.000
```

Level system info: no information about the level system stored in the zfs header



Scan position '56'

Scan position is member of group(s):

Status registration '[102h] registered with cloud to cloud'

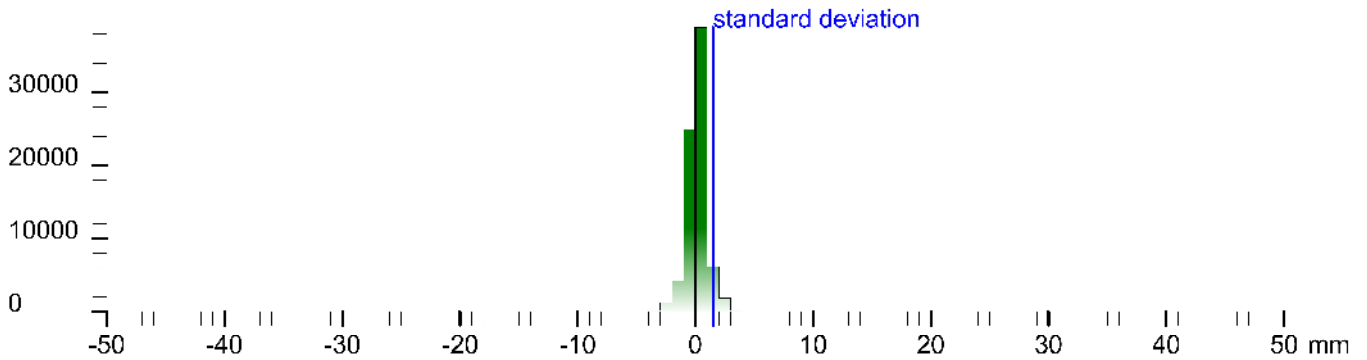
Registration matrix:

```
-0.820047  0.572298  -0.000260  46.1864 m  
-0.572297  -0.820047  -0.000323  2.5168 m  
-0.000398  -0.000116  1.000000  4.6293 m  
0.000000  0.000000  0.000000  1.0000
```

Result registration cloud to cloud standard deviation: 1.5 mm

Deviation histogram

Points



Scan '56'

Scanner 'Z+F IMAGER 5016' serial number '5016-0100' Firmware 9.0.3.6562-0

Scan resolution 'High' quality 'Normal'

Metadata Value comment operator

```
Scan position: '56' [102h] registered with cloud to cloud  
Sensor  
sensors: 3096 *barometric transition rotation*  
Barometer: 0.973504 bar 338.267 m  
nav translation: -1.1876 m -3.9055 m 335.6702 m accuracies: 7.1974 m 7.1974 m 0.0000 m  
nav rotation: 0.0000 0.0000 40.8742 accuracies: 0.0000 0.0000 1s.0000  
upside-down: no  
Initial pre position: (Girdoor)  
-3.776 0.631 0.000 53.428  
-0.681 -0.776 0.000 0.521  
0.000 0.000 1.000 -27.264  
0.000 0.000 0.000 1.000
```

Level system info: no information about the level system stored in the zfs header



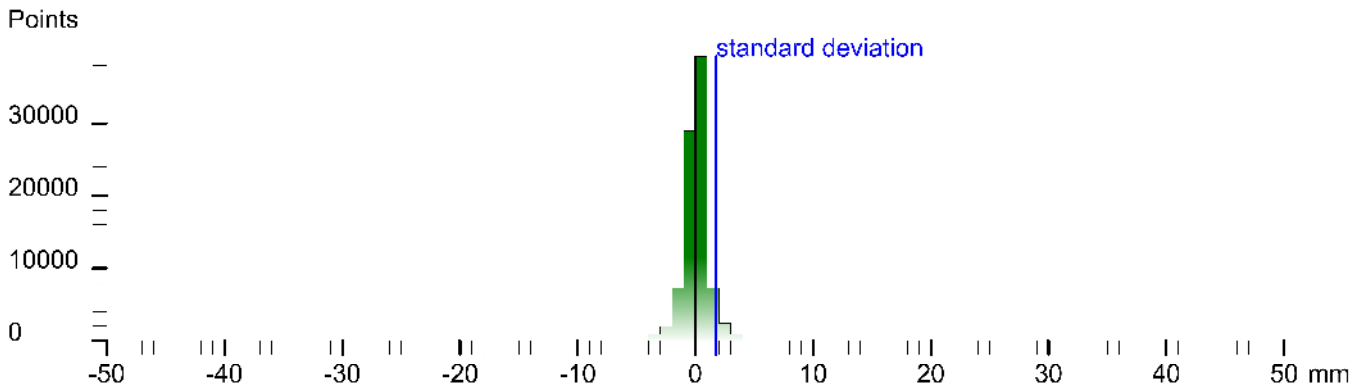
Scan position '57'

Scan position is member of group(s):
 Status registration '[102h] registered with cloud to cloud'
 Registration matrix:

```
0.498167 -0.867081 -0.000816 46.3315 m
0.867082 0.498167 0.000200 7.5624 m
0.000233 -0.000807 1.000000 4.6171 m
0.000000 0.000000 0.000000 1.0000
```

Result registration cloud to cloud standard deviation: 1.8 mm

Deviation histogram



Scan '57'

Scanner 'Z+F IMAGER 5016' serial number '5016-0100' Firmware 9.0.3.6562-0
 Scan resolution 'High' quality 'Normal'

Metadata **Value**
comment
operator

```
Scan position: '57' - name: '57' - number: '57' - status: 'Registered' - type: 'Point Cloud' - file: '57' - format: 'Binary' - size: '160.0' - units: 'm' - resolution: '0.25' - quality: 'Normal' - sensor: 'Z+F IMAGER 5016' - serial: '5016-0100' - firmware: '9.0.3.6562-0' - scan_resolution: 'High' - quality: 'Normal' - comment: '' - operator: '' - sensors: '3096 *barometric transition rotation*' - barometer: '0.973505 bar 338.257 m' - nav_translation: '-3.6774 m 3.43/2 m 335.8740 m accuracies: 5.51/3 m 5.51/3 m 0.0031 m' - nav_rotation: '0.0000 0.0000 0.0000 0.0000 accuracies: 0.0000 0.0000 1s.0000' - up/down: 'no' - initial_pos_position: '(0/door)' - 0.537 -0.873 -0.000 52.748 - 0.643 0.537 0.000 0.965 - 0.000 0.000 1.000 -27.060 - 0.000 0.000 0.000 1.000
```

Level system info: no information about the level system stored in the zfs header



Scan position '6'

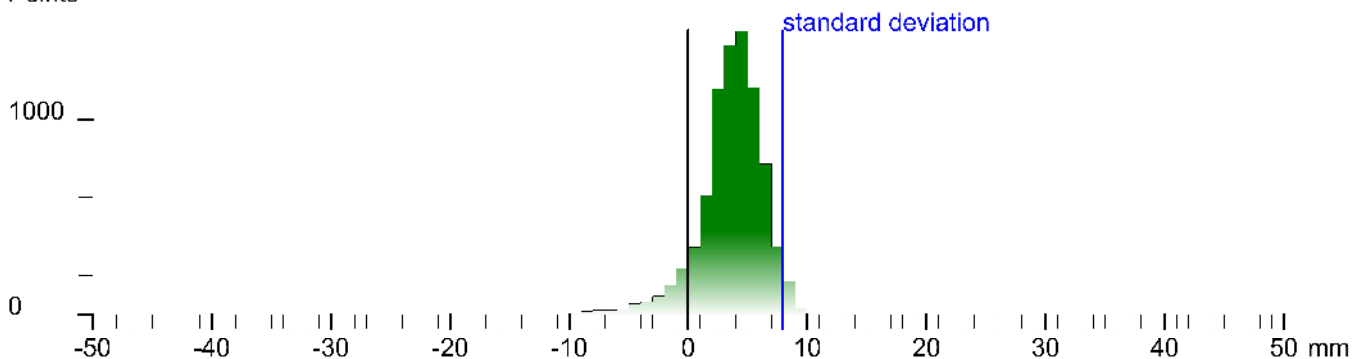
Scan position is member of group(s):
 Status registration '[102h] registered with cloud to cloud'
 Registration matrix:

```
0.501253 -0.865301 0.000701 83.0704 m
0.865301 0.501254 0.000243 54.4508 m
-0.000561 0.000484 1.000000 8.1927 m
0.000000 0.000000 0.000000 1.0000
```

Result registration cloud to cloud standard deviation: 7.9 mm

Deviation histogram

Points



Scan '6'

Scanner 'Z+F IMAGER 5016' serial number '5016-0100' Firmware 9.0.3.6562-0
 Scan resolution 'High' quality 'Normal'

Metadata **Value**
comment
operator

```
Scan comment: null
Sensor
sensors: 3100 *barome or transition rotation gps
Barometer: 0.969721 bar 388.846 m
nav translation: 12.602° m -30.5° 51 m 368.2050 m accuracies: 21.7193 m 21.7163 m 0.0000 m
nav rotation: 0.0000 0.0000 501.48° / accuracies: 0.0000 0.0000 1s.0000
upside-down: no
GPS lat: 47.592045 long: 23.77° 549 satellites: 8 height: 457.7m hddo: .1 vdcpl: 1.7m hacc: 4.6-m vacc: 7.0 flags: G3 'stand alone 3D solution'
north: 5274981.700 m east: 708362.522 m zone: 34T
Initial pre position (3-coo. tocoor)
0.522° -0.853 0.000 67.730
0.853 0.522 0.000 47.300
0.000 0.000 1.000 5.272
0.000 0.000 0.000 1.000
```

Level system info: dynamic compensator available.



Scan position '60'

Scan position is member of group(s):

Status registration '[102h] registered with cloud to cloud'

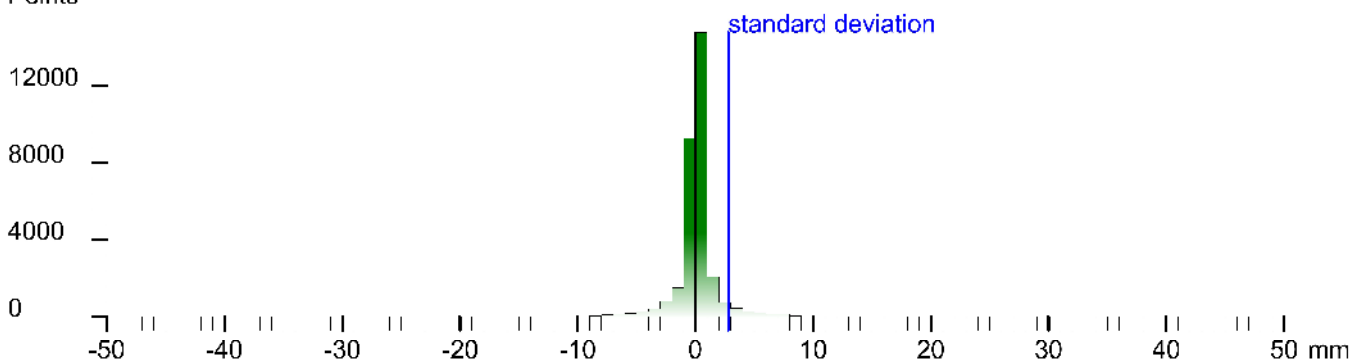
Registration matrix:

0.957294	0.289118	-0.000344	53.4187 m
-0.289118	0.957294	0.000043	3.5907 m
0.000341	0.000058	1.000000	4.9015 m
0.000000	0.000000	0.000000	1.0000

Result registration cloud to cloud standard deviation:2.8 mm

Deviation histogram

Points



Scan '60'

Scanner 'Z+F IMAGER 5016' serial number '5016-0100' Firmware 9.0.3.6562-0

Scan resolution 'High' quality 'Normal'

Metadata Value comment operator

```
Scan comment: null  
Sensor  
sensors: 3096 *barometric transition rotation*  
Barometer: 0.973466 bar 336.59 m  
nav translation: 1.0319 m 0.512 m 336.1475 m accuracies: 5.6724 m 5.6724 m 0.0001 m  
nav rotation: 0.0000 0.0000 0.4205 accuracies: 0.0000 0.0000 0.0000  
upside-down: no  
Initial pre position: (Girdoor)  
0.891 0.266 0.000 57.590  
-0.266 0.964 0.000 2.146  
0.000 0.000 1.000 -26.786  
0.000 0.000 0.000 1.000
```

Level system info: no information about the level system stored in the zfs header



Scan position '64'

Scan position is member of group(s):

Status registration '[102h] registered with cloud to cloud'

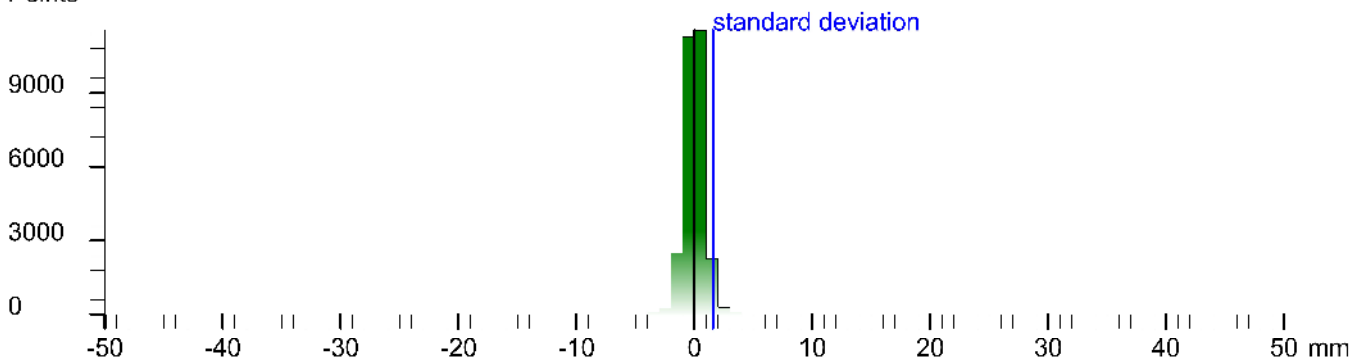
Registration matrix:

```
-0.304570  0.952490  -0.000182  81.5345 m  
-0.952490  -0.304570  -0.000792  20.4174 m  
-0.000810  -0.000068  1.000000  -0.4909 m  
0.000000  0.000000  0.000000  1.0000
```

Result registration cloud to cloud standard deviation: 1.6 mm

Deviation histogram

Points



Scan '64'

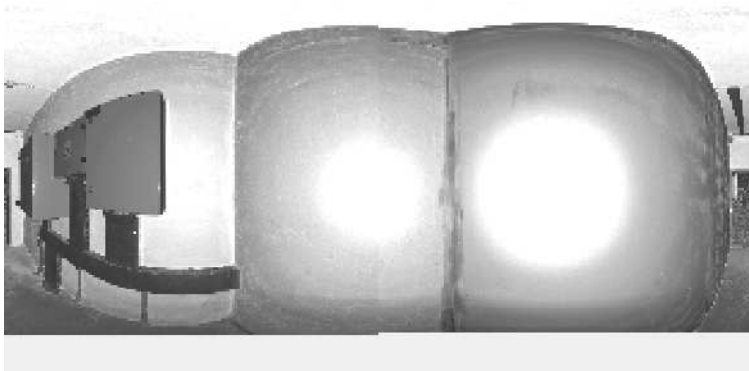
Scanner 'Z+F IMAGER 5016' serial number '5016-0100' Firmware 9.0.3.6562-0

Scan resolution 'High' quality 'Normal'

Metadata **Value**
comment
operator

```
Scan comment: null  
Sensor  
sensors: 3096 *barometric transition rotation*  
Barometer: 0.974086 bar 331.26 m  
nav translation: -3.0732 m -0.0992 m 33', 1353 m accuracies: 0.7026 m 0.7026 m 0.0001 m  
nav rotation: 0.0000 0.0000 /2.9eC6 accuracies: 0.0000 0.0000 1s.0000  
upside-down: no  
Initial pre position: (Girdoor)  
0.293 0.956 0.000 94.748  
-0.956 0.293 0.000 6.004  
0.000 0.000 1.000 -31.798  
0.000 0.000 0.000 1.000
```

Level system info: no information about the level system stored in the zfs header



Scan position '66'

Scan position is member of group(s):

Status registration '[102h] registered with cloud to cloud'

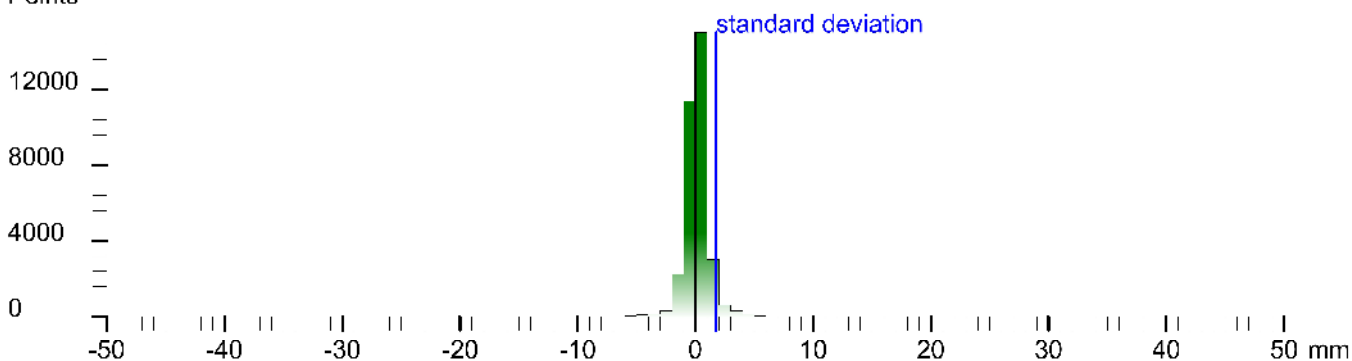
Registration matrix:

```
-0.780209 -0.625519 0.000448 82.1103 m
0.625519 -0.780209 -0.000432 22.5340 m
0.000620 -0.000057 1.000000 -0.4812 m
0.000000 0.000000 0.000000 1.0000
```

Result registration cloud to cloud standard deviation: 1.7 mm

Deviation histogram

Points



Scan '66'

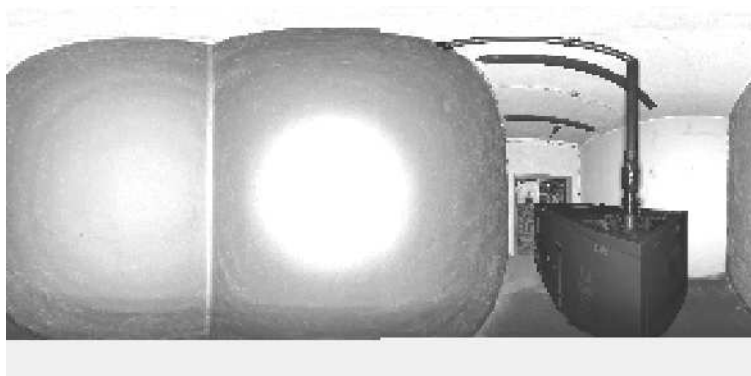
Scanner 'Z+F IMAGER 5016' serial number '5016-0100' Firmware 9.0.3.6562-0

Scan resolution 'High' quality 'Normal'

Metadata **Value**
comment
operator

```
Scan comment: null
Sensor
sensors: 3096 *barome or transition rotation*
Barometer: 0.974027 bar 331.773 m
nav translation: -3.9594 m 1.1253 m 331.5418 m accuracies: 5.9762 m 5.9762 m 0.3100 m
nav rotation: 0.0000 0.0000 256.0/26 accuracies: 0.0000 0.0000 1s:0.0000
up/down: no
Initial pos position (Girdoor)
-3.241 -0.97 0.000 93.386
0.9/1 -0.241 0.000 6.913
0.000 0.000 1.000 -31.38°
0.000 0.000 0.000 1.000
```

Level system info: no information about the level system stored in the zfs header



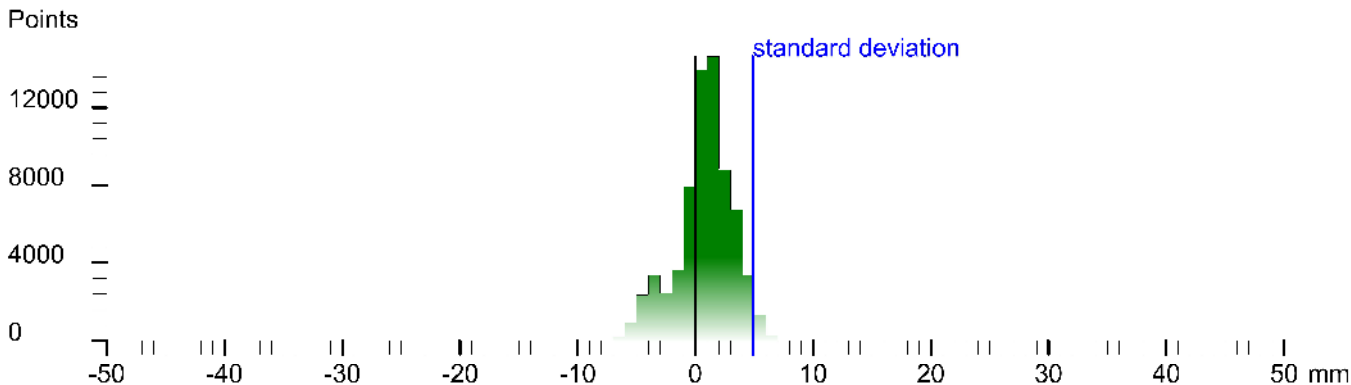
Scan position '67'

Scan position is member of group(s):
 Status registration '[102h] registered with cloud to cloud'
 Registration matrix:

```
0.932535 0.361081 0.000527 81.7171 m
-0.361081 0.932535 -0.000397 19.5261 m
-0.000635 0.000180 1.000000 2.7311 m
0.000000 0.000000 0.000000 1.0000
```

Result registration cloud to cloud standard deviation:4.9 mm

Deviation histogram



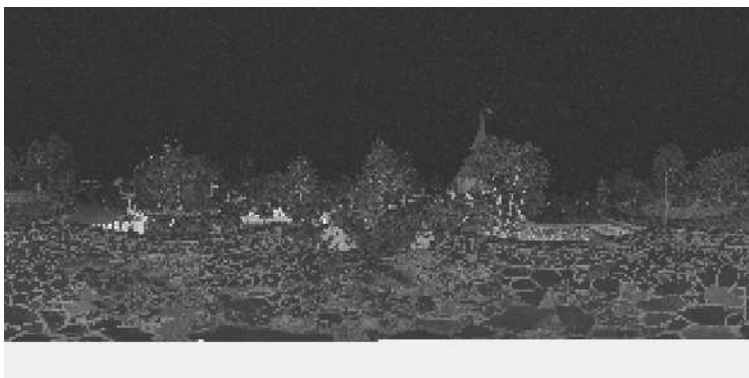
Scan '67'

Scanner 'Z+F IMAGER 5016' serial number '5016-0100' Firmware 9.0.3.6562-0
 Scan resolution 'High' quality 'Normal'

Metadata	Value
comment	
operator	

```
Scan position: '67' name: '148:67' sensor: 'Z+F IMAGER 5016' serial: '5016-0100' firmware: '9.0.3.6562-0' resolution: 'High' quality: 'Normal'
Sensor
sensors: 3100 *barometric transition rotation gps
Barometer: 0.973843 bar 335.074 m
nav translation: -1.9436 m 10.0073 m 334.7775 m accuracies: 10.5210 m 10.5210 m 0.0001 m
nav rotation: 0.0000 0.0000 43.6870 accuracies: 0.0000 0.0000 1s.0000
upside-down: no
GPS lat:47.5917+0 long:23.77470 satellites:8 height:451.8m hhdop:1.1 vhdop:2.0m hacc:4.1 m vacc:5.5 flags:G3 'stand alone 3D solution'
north:5274617.597 m east:708358.428 m zone:34T
Initial pre position (3-coor):
0.723 0.991 0.000 83.680
-0.601 0.723 0.000 -3.227
0.000 0.000 1.000 -26.156
0.000 0.000 0.000 1.000
```

Level system info: no information about the level system stored in the zfs header



Scan position '73'

Scan position is member of group(s):

Status registration '[102h] registered with cloud to cloud'

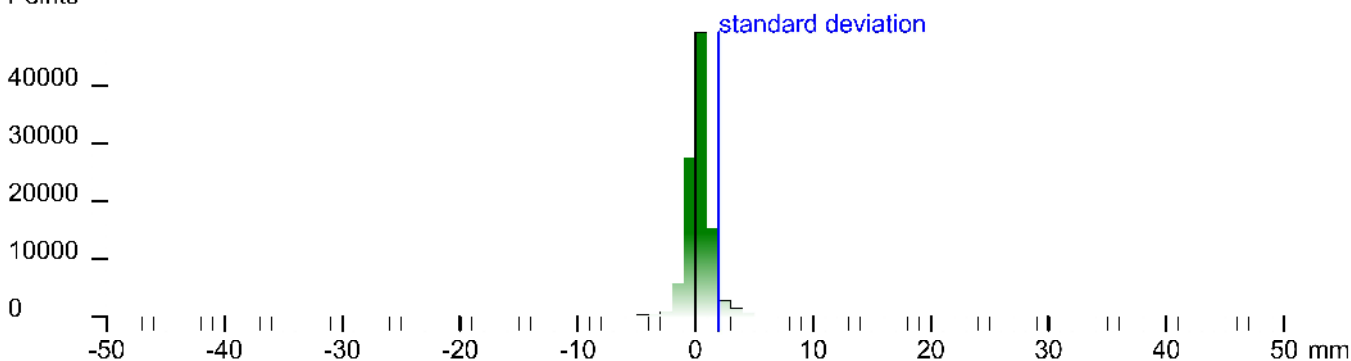
Registration matrix:

```
-0.979944 -0.199274 -0.000599 46.5541 m  
0.199274 -0.979945 -0.000046 2.6762 m  
-0.000577 -0.000165 1.000000 6.9897 m  
0.000000 0.000000 0.000000 1.0000
```

Result registration cloud to cloud standard deviation:2.0 mm

Deviation histogram

Points



Scan '73'

Scanner 'Z+F IMAGER 5016' serial number '5016-0100' Firmware 9.0.3.6562-0

Scan resolution 'High' quality 'Normal'

Metadata Value comment operator

```
Scan comment: null  
Sensor  
sensors: 3096 *barometric transition rotation*  
Barometer: 0.973043 bar 340.233 m  
nav translation: -0.50/3 m -0.3656 m 339.9859 m accuracies: 5.1111 m 5.1111 m 0.0000 m  
nav rotation: 0.0000 0.0000 *86.6118 accuracies: 0.0000 0.0000 1s,0.0000  
upside-down: no  
Initial pre position: (0 indoor)  
-3.997 -0.113 0.000 16.032  
0.113 -0.994 0.000 2.228  
0.000 0.000 1.000 -77.948  
0.000 0.000 0.000 1.000
```

Level system info: no information about the level system stored in the zfs header



Scan position '74'

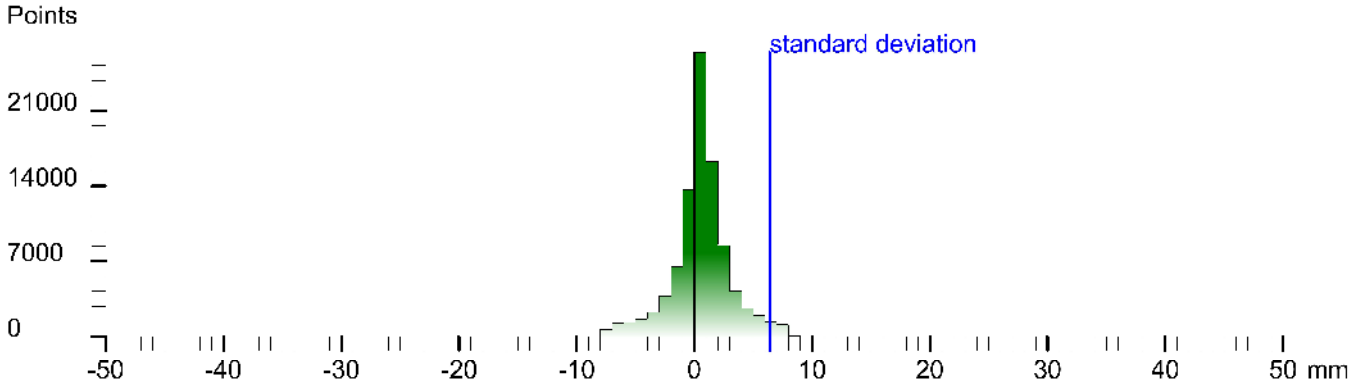
Scan position is member of group(s):
 Status registration '[102h] registered with cloud to cloud'
 Registration matrix:

```

0.961707  0.273674  0.014916  39.8977 m
-0.273797 0.961763  0.006900  10.6442 m
-0.012457 -0.010720 0.999865  7.6335 m
0.000000  0.000000  0.000000  1.0000
    
```

Result registration cloud to cloud standard deviation:6.4 mm

Deviation histogram



Scan '74'

Scanner 'Z+F IMAGER 5016' serial number '5016-0100' Firmware 9.0.3.6562-0
 Scan resolution 'High' quality 'Normal'

Metadata	Value
comment	
operator	

```

Sensor
sensors: 3100 *barome or transition rotation gps
Barometer: 0.972942 bar 341.1 m
nav translation: -5.4417 m 4.5923 m 337.7362 m accuracies: 9.2866 m 9.2866 m 0.0001 m
nav rotation: 0.0000 0.0000 0.55889 accuracies: 0.0000 0.0000 1s.0000
upside-down: no
GPS lat:47.591682 long:23.770699 satellites:7 height:450.2m hhdop:1.6 vhdop:1.6m hacc:5.0-m vacc:5.0 flags:G3 'stand alone 3D solution'
north:5274638.681 m east:708315.068 m zcra:34T
Initial pre position (3-coo. tocoor)
0.983 0.268 0.000 40.308
-0.288 0.983 0.000 5.223
0.000 0.000 1.000 -25.188
0.000 0.000 0.000 1.000
    
```

Level system info: no information about the level system stored in the zfs header



Labels

No labels stored in project

Links

No links stored in project

Summary

Number of scans: **75** used in **75** scan positions

Point clouds: **0**

Scans with color: **0** mapped **0**

Scans with thermal data: **0** mapped **0**

Scans with errors:**0** warnings:**1** messages:**0**

Missed or corrupted scans files: **0**

Scanners used in the project: **5016-0100**

0 known targets used

0 targets used in **0** of **75** scan positions

First scan taken at: **7.7.2021 15:20::47** last scan at: **8.7.2021 18:52:13**

Duration: **1d 3h 31min 26sec**