

# Project report

Date: Sun Nov 26 2023 18:11:00  
Build with: Z+FLaserControl 9.0.2.24038  
Project: Biserica Ribita  
Master scan position: 1

66 of 66 scan positions used for registration.

## Quality standard deviation of the cloud to cloud registration

d:3.94 mm

## Superior matrix

1.000000	0.000000	0.000000	0.0000 m
0.000000	1.000000	0.000000	0.0000 m
0.000000	0.000000	1.000000	0.0000 m
0.000000	0.000000	0.000000	1.0000

# Scan position '1'

Scan position is member of group(s):  
Status registration '[23h] preregistered'  
Registration matrix:

0.631657	0.775248	0.000000	0.0000 m
-0.775248	0.631657	0.000000	0.0000 m
0.000000	0.000000	1.000000	0.0000 m
0.000000	0.000000	0.000000	1.0000

## Scan 'Bis. Ribita Sc.'

Scanner 'Z+F IMAGER 5016' serial number '5016-0100' Firmware 9.0.3.6562-0  
Scan resolution 'High' quality 'Normal'

Metadata	Value
comment	
operator	

```
Scan command: c:\1_RCServer 9.0.3\memorize 1 -file "Bis. Ribita Sc." -scanset "1" -path "Biserica Ribita" -project "Biserica Ribita" -projectTemplate "" -compensator -nav -temperature "20" -camera "1-cam1" -panoramaparams fast-resolution h-quality default -from "0" -to "181" -frames "20" -file "140"
Sensor
sensors: 3100 * barometer translation rotation gps*
Barometer: 0.986239 bar 227.332 m
nav translation: 0.0000 m 0.0000 m 226.6920 m accuracies: 5.1000 m 5.1000 m 0.0001 m
nav rotation: 0.0000 0.0000 50.8276 accuracies: 0.0000 0.0000 15.0000
upside-down: no
GPS lat:46.178230 long:22.764412 satellites:6 height:303.7m hdop:1.5 vdop:1.9m hacc:4.8m vacc:4.9 flags:G3 'stand alone 3D solution'
north:5115363.513 m east:636182.312 m zone:34T
Initial pre position (3:outdoor)
0.632 0.775 0.000 0.000
-0.775 0.632 0.000 0.000
0.000 0.000 1.000 0.000
0.000 0.000 0.000 1.000
```

Level system info: dynamic compensator available.



# Scan position '10'

Scan position is member of group(s):

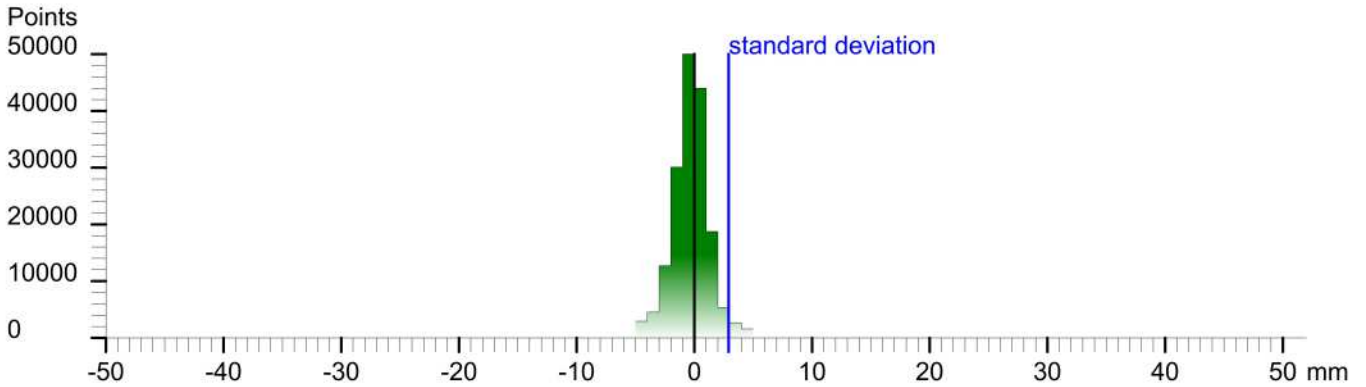
Status registration '[102h] registered with cloud to cloud'

Registration matrix:

```
-0.759959 0.649969 0.001397 15.2103 m  
-0.649971 -0.759957 -0.001765 3.9622 m  
-0.000085 -0.002249 0.999997 -0.0866 m  
0.000000 0.000000 0.000000 1.0000
```

Result registration cloud to cloud standard deviation: 2.9 mm

## Deviation histogram



## Scan 'Bis. Ribita Sc.9'

Scanner 'Z+F IMAGER 5016' serial number '5016-0100' Firmware 9.0.3.6562-0

Scan resolution 'High' quality 'Normal'

Metadata	Value
comment	
operator	

```
Scan command: -crl "RCSense 9.0.3" -memorize 1 -file "Bis. Ribita Sc.9" -scanpos "10" -path "Biserica Ribita" -project "Biserica Ribita" -projectTemplate "" -compensator -nav -temperature "20" -camera "1-cam" -panoramaparams fast-resolution h-quality default -from "0" -to "180" -front "20" -back "240"  
Sensor  
sensors: 3100 * barometer translation rotation gps*  
Barometer: 0.985903 bar 230.194 m  
nav translation: -3.0023 m -2.2478 m 229.4728 m accuracies: 7.0129 m 7.0129 m 0.0000 m  
nav rotation: 0.0000 0.0000 136.9660 accuracies: 0.0000 0.0000 15.0000  
upside-down: no  
GPS lat:46.178230 long:22.764626 satellites:6 height:308.2m hdop:1.9 vdop:2.3m hacc:16.0m vacc:9.7 flags:G3 'stand alone 3D solution'  
north:5115363.879 m east:636196.800 m zone:34T  
Initial pre position (3:outdoor)  
-0.731 0.682 0.000 16.517  
-0.682 -0.731 0.000 0.367  
0.000 0.000 1.000 2.781  
0.000 0.000 0.000 1.000
```

Level system info: dynamic compensator available.



# Scan position '11'

Scan position is member of group(s):

Status registration '[102h] registered with cloud to cloud'

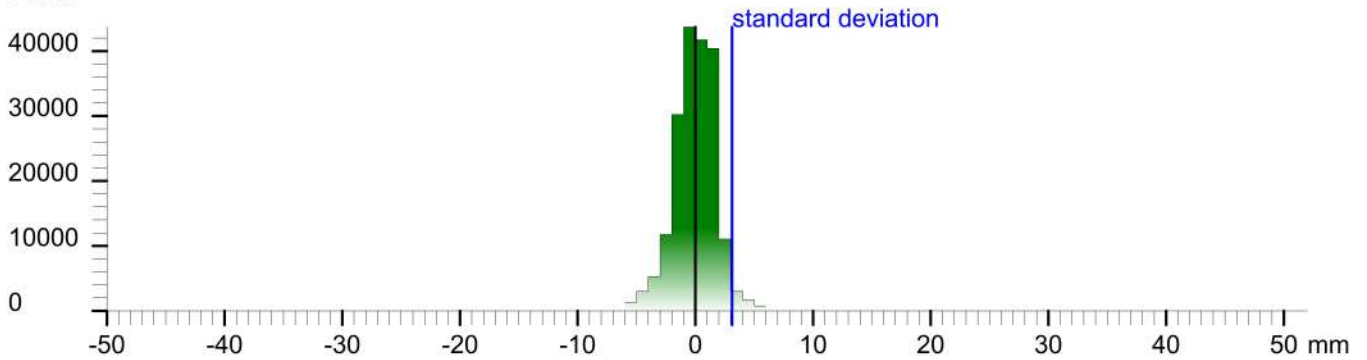
Registration matrix:

0.864210	0.503129	0.001543	6.2566 m
-0.503129	0.864211	0.000201	3.0486 m
-0.001232	-0.000950	0.999999	-0.0306 m
0.000000	0.000000	0.000000	1.0000

Result registration cloud to cloud standard deviation:3.1 mm

## Deviation histogram

Points



## Scan 'Bis. Ribita Sc.10'

Scanner 'Z+F IMAGER 5016' serial number '5016-0100' Firmware 9.0.3.6562-0

Scan resolution 'High' quality 'Normal'

Metadata	Value
comment	
operator	

```
Scan command: -crl "Z+F IMAGER 9.0.3" -memorize 1 -file "Bis. Ribita Sc.10" -script "11" -path "Biserica Ribita" -proj "Biserica Ribita" -projectTemplate "" -compensator -nav -temperature "Zf" -camera "Z-fant" -panoramaparams fast -resolution h -quality default -from "0" -to "181" -Name1 "20" -No1 "340"
```

Sensor

sensors: 3100 " barometer translation rotation gps"  
Barometer: 0.985899 bar 230.227 m  
nav translation: -1.5542 m -6.1196 m 230.0682 m accuracies: 8.2915 m 8.2915 m 0.0000 m  
nav rotation: 0.0000 0.0000 27.0946 accuracies: 0.0000 0.0000 15.0000  
upside-down: no  
GPS lat:46.178246 long:22.764505 satellites:8 height:308.5m hdop:1.0 vdop:1.8m haacc:3.9m vacc:4.8 flags:G3 'stand alone 3D solution'  
north:5115365.369 m east:636189.488 m zone:34T  
Initial pre position (3:outdoor)  
0.890 0.455 0.000 7.138  
-0.455 0.890 0.000 1.937  
0.000 0.000 1.000 3.376  
0.000 0.000 0.000 1.000

Level system info: dynamic compensator available.



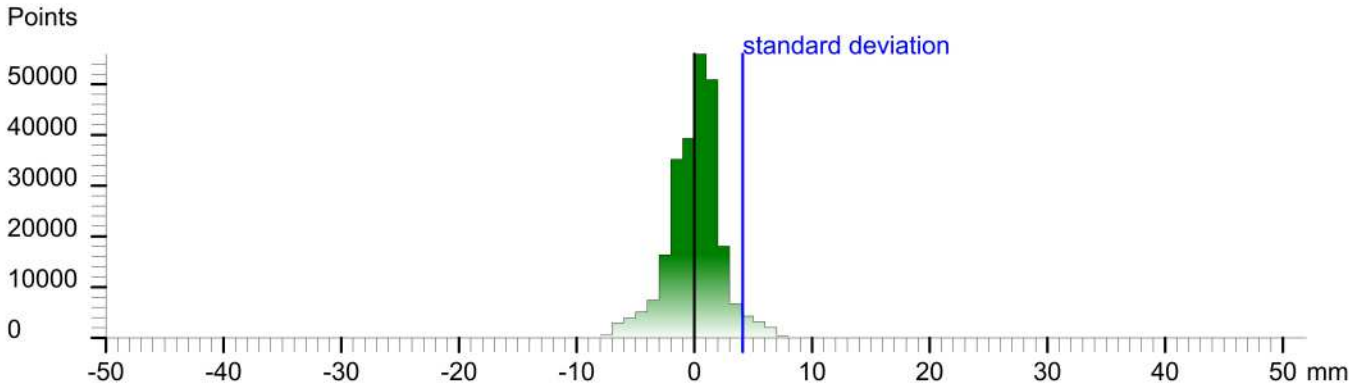
# Scan position '12'

Scan position is member of group(s):  
Status registration '[102h] registered with cloud to cloud'  
Registration matrix:

0.595969	0.803006	0.001496	5.8596 m
-0.803007	0.595969	0.000029	-1.2153 m
-0.000868	-0.001219	0.999999	-0.0297 m
0.000000	0.000000	0.000000	1.0000

Result registration cloud to cloud standard deviation:4.1 mm

## Deviation histogram



## Scan 'Bis. Ribita Sc.12'

Scanner 'Z+F IMAGER 5016' serial number '5016-0100' Firmware 9.0.3.6562-0  
Scan resolution 'High' quality 'Normal'

Metadata	Value
comment	
operator	

```
Scan command: -cli "Z+F IMAGER 9.0.3" -memorize 1 -file "Bis. Ribita Sc.12" -scanpos "12" -path "Biserica Ribita" -project "Biserica Ribita" -projectTemplate "" -compensator -nav -temperature "20" -camera "i-cam" -panoramaparams test -resolution h -quality default -from "0" -to "101" -hfrom "20" -hno "340"
```

Sensor  
sensors: 3100 " barometer translation rotation gps"  
Barometer: 0.985839 bar 230.738 m  
nav translation: 0.0000 m 0.0000 m 230.6059 m accuracies: 5.1000 m 5.1000 m 0.0001 m  
nav rotation: 0.0000 0.0000 54.6269 accuracies: 0.0000 0.0000 15.0000  
upside-down: no  
GPS lat:46.178192 long:22.764517 satellites:6 height:306.3m hdop:1.4 vdop:2.7m haacc:6.7m vacc:9.4 flags:G3 'stand alone 3D solution'  
north:5115359.455 m east:636190.503 m zone:34T  
Initial pre position (3:outdoor)  
0.579 0.815 0.000 46.178  
-0.815 0.579 0.000 22.765  
0.000 0.000 1.000 230.606  
0.000 0.000 0.000 1.000

Level system info: dynamic compensator available.



## Scan 'Bis. Ribita Sc.11'

Scanner 'Z+F IMAGER 5016' serial number '5016-0100' Firmware 9.0.3.6562-0  
Scan resolution 'High' quality 'Normal'

Metadata	Value
comment	
operator	

```
Scan command: -cst %RCServer 9.0.3 -memoria 1 -file "Bis. Ribita Sc.11" -scenpos "12" -path "Bianca Ribita" -project "Bianca Ribita" -projectTemplate "" -compensator -nav -temperature "20" -camera "1-ctrl" -panoramaparams full -resolution h -quality default -from "0" -to "181" -from1 "20" -hot "360"
Sensor
sensors: 3100 ' barometer translation rotation gps'
Barometer: 0.985817 bar 230.924 m
nav translation: 3.8596 m -0.8729 m 230.2046 m accuracies: 7.0865 m 7.0865 m 0.0001 m
nav rotation: 0.0000 0.0000 53.4017 accuracies: 0.0000 0.0000 15.0000
upside-down: no
GPS lat:46.178200 long:22.764503 satellites:7 height:308.6m hdop:1.2 vdop:1.7m hacc:5.3m vacc:8.1 flags:G3 'stand alone 3D solution'
north:5115360.279 m east:636189.454 m zone:34T
Initial pre position (3:outdoor)
0.596 0.803 0.000 7.098
-0.803 0.596 0.000 -3.177
0.000 0.000 1.000 3.513
0.000 0.000 0.000 1.000
```

Level system info: dynamic compensator available.





# Scan position '13'

Scan position is member of group(s):

Status registration '[102h] registered with cloud to cloud'

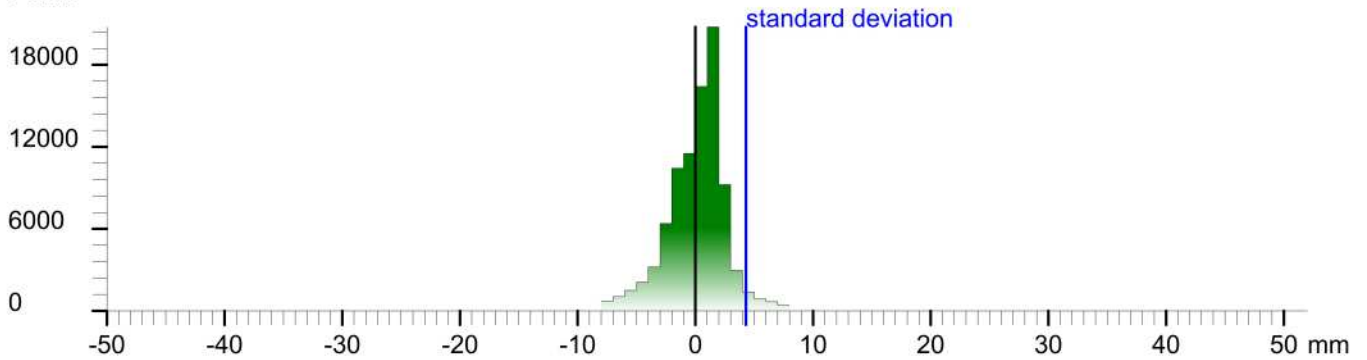
Registration matrix:

```
0.902411  0.430873  0.001316  8.5420 m
-0.430874  0.902412  -0.000093  -1.3348 m
-0.001227  -0.000483  0.999999  0.1623 m
0.000000  0.000000  0.000000  1.0000
```

Result registration cloud to cloud standard deviation:4.3 mm

## Deviation histogram

Points



## Scan 'Bis. Ribita Sc.13'

Scanner 'Z+F IMAGER 5016' serial number '5016-0100' Firmware 9.0.3.6562-0

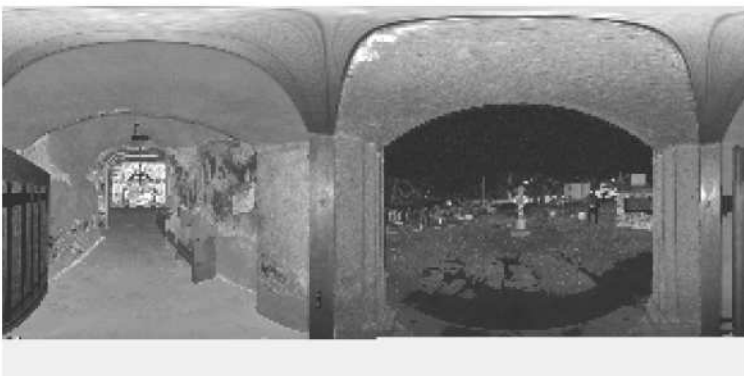
Scan resolution 'High' quality 'Normal'

Metadata	Value
comment	
operator	

Scan command: `cd /home/.../RCServer 9.0.3/ -memorize 1 -file "Bis. Ribita Sc.13" -scanpos "13" -path "Biserica Ribita" -project "Biserica Ribita" -projectTemplate "" -compensator -nav -temperature "20" -camera "i-cam" -panoramasparams test -resolution h -quality default -ifrom "0" -to "101" -hfrom "20" -to "340"`

Sensor  
sensors: 3096 'barometer translation rotation'  
Barometer: 0.985679 bar 232.098 m  
nav translation: 0.0000 m 0.0000 m 231.9749 m accuracies: 5.1000 m 5.1000 m 0.0000 m  
nav rotation: 0.0000 0.0000 27.0842 accuracies: 0.0000 0.0000 15.0000  
upside-down: no  
Initial pre position (0:indoor)  
0.890 0.455 0.000 7.098  
-0.455 0.890 0.000 -3.177  
0.000 0.000 1.000 4.882  
0.000 0.000 0.000 1.000

Level system info: dynamic compensator available.



# Scan position '14'

Scan position is member of group(s):

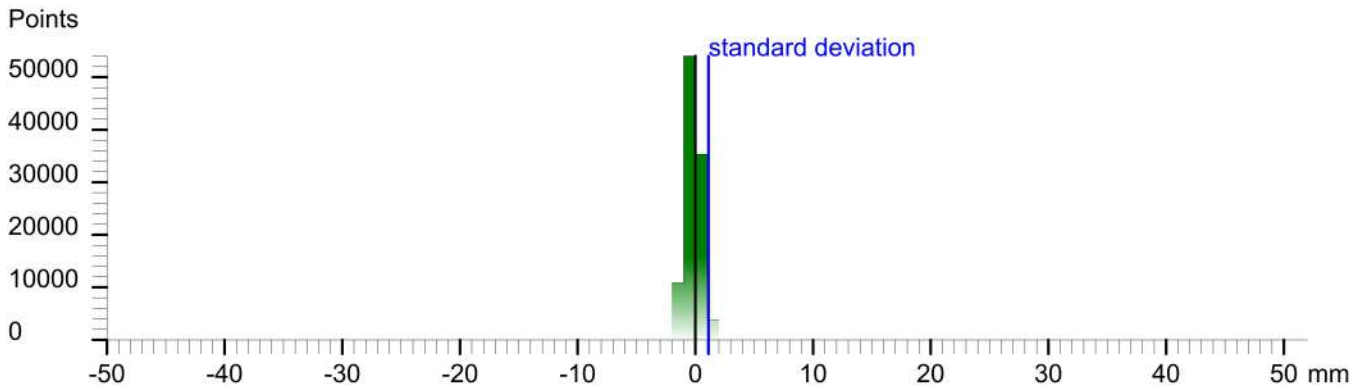
Status registration '[102h] registered with cloud to cloud'

Registration matrix:

```
0.936393 0.350951 0.001097 10.6641 m
-0.350951 0.936394 -0.000176 -1.4191 m
-0.001089 -0.000220 0.999999 0.1592 m
0.000000 0.000000 0.000000 1.0000
```

Result registration cloud to cloud standard deviation: 1.1 mm

## Deviation histogram



## Scan 'Bis. Ribita Sc.14'

Scanner 'Z+F IMAGER 5016' serial number '5016-0100' Firmware 9.0.3.6562-0

Scan resolution 'High' quality 'Normal'

Metadata	Value
comment	
operator	

Scan command: `cd /usr/local/bin; ./rcsenser 9.0.3 -memorize 1 -file "Bis. Ribita Sc.14" -scanpos "14" -path "Biserica Ribita" -project "Biserica Ribita" -projectTemplate "" -compensator -nav -temperature "20" -camera "i-cam" -panoramaparams test -resolution h -quality default -from "0" -to "101" -hfrom "20" -hto "340"`

Sensor  
sensors: 3096 'barometer translation rotation'  
Barometer: 0.985377 bar 234.666 m  
nav translation: 1.8422 m 0.2127 m 234.1835 m accuracies: 6.0386 m 6.0386 m 0.0001 m  
nav rotation: 0.0000 0.0000 24.6721 accuracies: 0.0000 0.0000 15.0000  
upside-down: no  
Initial pre position (0:indoor)  
0.909 0.417 0.000 8.940  
-0.417 0.909 0.000 -2.964  
0.000 0.000 1.000 7.090  
0.000 0.000 0.000 1.000

Level system info: dynamic compensator available.





# Scan position '15'

Scan position is member of group(s):

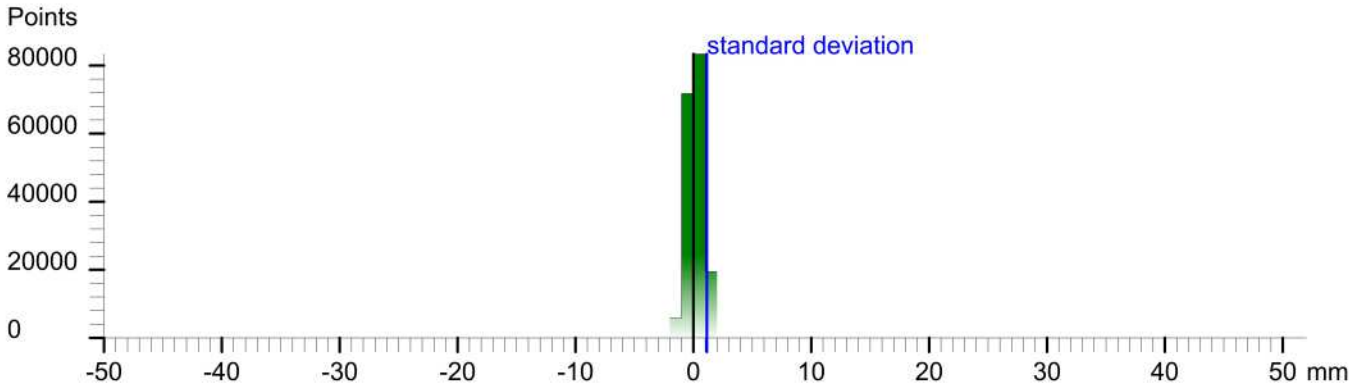
Status registration '[102h] registered with cloud to cloud'

Registration matrix:

```
0.901515 0.432747 0.001318 12.4289 m
-0.432747 0.901515 -0.000198 -1.3601 m
-0.001274 -0.000392 0.999999 0.1560 m
0.000000 0.000000 0.000000 1.0000
```

Result registration cloud to cloud standard deviation: 1.1 mm

## Deviation histogram



## Scan 'Bis. Ribita Sc.15'

Scanner 'Z+F IMAGER 5016' serial number '5016-0100' Firmware 9.0.3.6562-0

Scan resolution 'High' quality 'Normal'

**Metadata**    **Value**  
**comment**  
**operator**

```
Scan command: -crl "ZFCScanner 9.0.3" -memorize 1 -file "Bis. Ribita Sc.15" -scanset "15" -path "Biserica Ribita" -project "Biserica Ribita" -projectTemplate "" -compensator -cav -temperature "20" -camera "i-cam" -panoramasparams test -resolution h -quality default -ifrom "0" -to "101" -hfrom "20" -to "340"
Sensor
sensors: 3096 'barometer translation rotation'
Barometer: 0.985202 bar 236.161 m
nav translation: 2.4629 m 0.0286 m 235.2952 m accuracies: 6.3431 m 6.3431 m 0.0001 m
nav rotation: 0.0000 0.0000 27.6435 accuracies: 0.0000 0.0000 15.0000
upside-down: no
Initial pre position (0:indoor)
0.886 0.464 0.000 11.403
-0.464 0.886 0.000 -2.936
0.000 0.000 1.000 8.202
0.000 0.000 0.000 1.000
```

Level system info: dynamic compensator available.



# Scan position '16'

Scan position is member of group(s):

Status registration '[102h] registered with cloud to cloud'

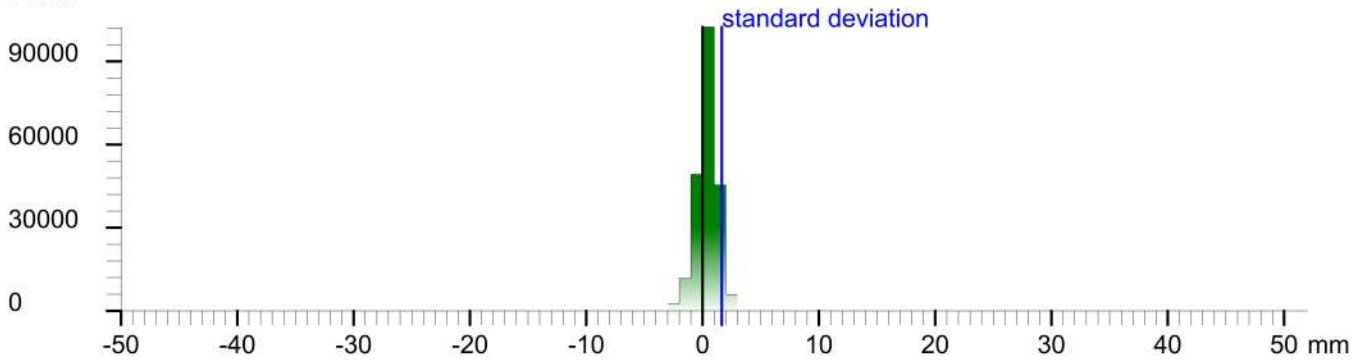
Registration matrix:

0.443462	-0.896293	0.000797	15.6086 m
0.896293	0.443462	-0.000396	0.9688 m
0.000002	0.000890	1.000000	0.1483 m
0.000000	0.000000	0.000000	1.0000

Result registration cloud to cloud standard deviation: 1.7 mm

## Deviation histogram

Points



## Scan 'Bis. Ribita Sc.16'

Scanner 'Z+F IMAGER 5016' serial number '5016-0100' Firmware 9.0.3.6562-0

Scan resolution 'High' quality 'Normal'

Metadata	Value
comment	
operator	

Scan command: `cd /usr/local/bin/RCScanner 9.0.3 -memorize 1 -file "Bis. Ribita Sc.16" -scanarea "16" -path "Biserica Ribita" -project "Biserica Ribita" -projectTemplate "" -compensator -nav -temperature "20" -camera "i-cam" -panoramaparams test -resolution h -quality default -from "0" -to "101" -hfrom "20" -hto "340"`

Sensor  
sensors: 3096 ' barometer translation rotation'  
Barometer: 0.985128 bar 236.789 m  
nav translation: 0.0336 m 1.0248 m 236.6795 m accuracies: 5.6260 m 5.6260 m 0.0000 m  
nav rotation: 0.0000 0.0000 296.4688 accuracies: 0.0000 0.0000 15.0000  
upside-down: no  
Initial pre position (0:indoor)  
0.446 -0.895 0.000 11.436  
0.895 0.446 0.000 -1.911  
0.000 0.000 1.000 9.586  
0.000 0.000 0.000 1.000

Level system info: dynamic compensator available.



# Scan position '17'

Scan position is member of group(s):

Status registration '[102h] registered with cloud to cloud'

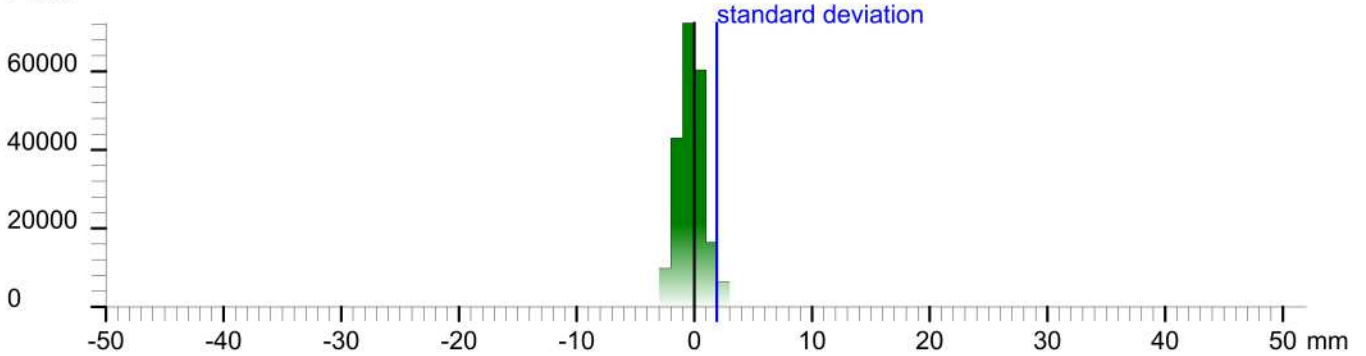
Registration matrix:

```
0.997215 -0.074558 0.001749 17.2120 m
0.074560 0.997216 -0.000631 -4.0874 m
-0.001697 0.000759 0.999998 0.1047 m
0.000000 0.000000 0.000000 1.0000
```

Result registration cloud to cloud standard deviation: 1.9 mm

## Deviation histogram

Points



## Scan 'Bis. Ribita Sc.17'

Scanner 'Z+F IMAGER 5016' serial number '5016-0100' Firmware 9.0.3.6562-0

Scan resolution 'High' quality 'Normal'

**Metadata**    **Value**  
**comment**  
**operator**

```
Scan command: -cli "ZCSense 9.0.3" -memorize 1 -file "Bis. Ribita Sc.17" -scanset "17" -path "Biserica Ribita" -project "Biserica Ribita" -projectTemplate "" -compensator -nav -temperature "20" -camera "i-cam" -panoramaparams:fov=resolution:h-quality=default-ifrom="0" -to "101" -hfrom="20" -to "340"
```

```
Sensor
sensors: 3096 'barometer translation rotation'
Barometer: 0.985142 bar 236.673 m
nav translation: 1.6874 m 1.6892 m 236.6457 m accuracies: 6.3102 m 6.3102 m 0.0000 m
nav rotation: 0.0000 0.0000 354.8965 accuracies: 0.0000 0.0000 114.1258
upside-down: no
Initial pre position (0:indoor)
0.996 -0.089 0.000 13.124
0.089 0.996 0.000 -0.222
0.000 0.000 1.000 9.552
0.000 0.000 0.000 1.000
```

Level system info: dynamic compensator available.



# Scan position '18'

Scan position is member of group(s):

Status registration '[102h] registered with cloud to cloud'

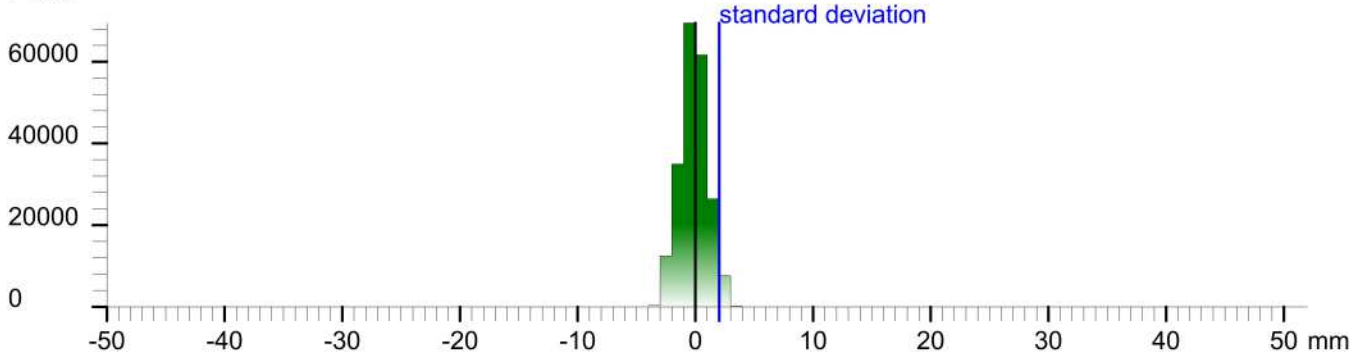
Registration matrix:

0.506671	-0.862138	0.001733	21.4741 m
0.862140	0.506671	-0.000388	-1.6253 m
-0.000543	0.001690	0.999998	0.2666 m
0.000000	0.000000	0.000000	1.0000

Result registration cloud to cloud standard deviation:2.0 mm

## Deviation histogram

Points



## Scan 'Bis. Ribita Sc.18'

Scanner 'Z+F IMAGER 5016' serial number '5016-0100' Firmware 9.0.3.6562-0

Scan resolution 'High' quality 'Normal'

**Metadata**    **Value**  
**comment**  
**operator**

Scan command: `cd /usr/local/bin; ./rcsenser 9.0.3 -memorize 1 -file "Bis. Ribita Sc.18" -scanarea "110" -path "Biserica Ribita" -project "Biserica Ribita" -projectTemplate "" -compensator -nav -temperature "20" -camera "i-cam" -panoramaparams test -resolution h -quality default -from "0" -to "101" -hfrom "20" -hto "340"`

Sensor  
sensors: 3096 ' barometer translation rotation'  
Barometer: 0.985152 bar 236.59 m  
nav translation: 1.7575 m 4.0539 m 236.4270 m accuracies: 7.3338 m 7.3338 m 0.0000 m  
nav rotation: 0.0000 0.0000 304.7782 accuracies: 0.0000 0.0000 15.0000  
upside-down: no  
Initial pre position (0:indoor)  
0.570 -0.821 0.000 14.881  
0.821 0.570 0.000 3.832  
0.000 0.000 1.000 9.334  
0.000 0.000 0.000 1.000

Level system info: dynamic compensator available.



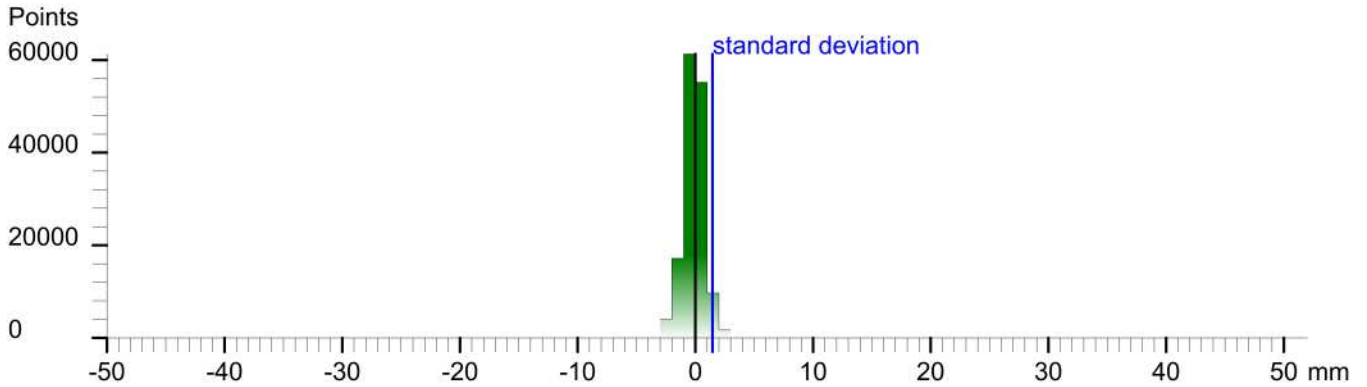
# Scan position '19'

Scan position is member of group(s):  
Status registration '[102h] registered with cloud to cloud'  
Registration matrix:

```
0.971317 -0.237777 0.002179 22.0793 m  
0.237777 0.971320 -0.000037 -0.1572 m  
-0.002108 0.000554 0.999998 0.3220 m  
0.000000 0.000000 0.000000 1.0000
```

Result registration cloud to cloud standard deviation: 1.5 mm

## Deviation histogram



## Scan 'Bis. Ribita Sc.19'

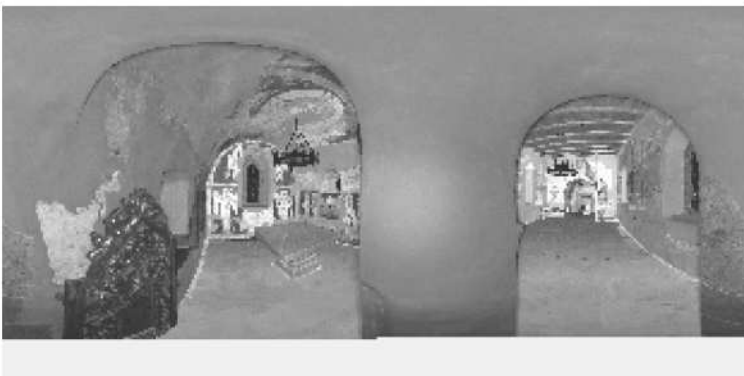
Scanner 'Z+F IMAGER 5016' serial number '5016-0100' Firmware 9.0.3.6562-0  
Scan resolution 'High' quality 'Normal'

Metadata	Value
comment	
operator	

Scan command: `ctrl 1,RCSensor 9.0.3 -memorize 1 -file "Bis. Ribita Sc.19" -scanpos "19" -path "Biserica Ribita" -project "Biserica Ribita" -projectTemplate "" -compensator -nav -temperature "20" -camera "i-cam" -panoramaparams test -resolution h -quality default -from "0" -to "101" -hfrom "20" -hro "340"`

Sensor  
sensors: 3096 ' barometer translation rotation'  
Barometer: 0.985056 bar 237.4 m  
nav translation: 3.6505 m 3.5900 m 237.7580 m accuracies: 7.6899 m 7.6899 m 0.0000 m  
nav rotation: 0.0000 0.0000 350.8647 accuracies: 0.0000 0.0000 15.0000  
upside-down: no  
Initial pre position (0:indoor)  
0.987 -0.159 0.000 18.532  
0.159 0.987 0.000 7.422  
0.000 0.000 1.000 10.665  
0.000 0.000 0.000 1.000

Level system info: dynamic compensator available.





# Scan position '2'

Scan position is member of group(s):  
Status registration '[23h] preregistered'  
Registration matrix:

0.926237	0.376942	0.000000	4.6649 m
-0.376942	0.926237	0.000000	-4.8987 m
0.000000	0.000000	1.000000	0.9520 m
0.000000	0.000000	0.000000	1.0000

## Scan 'Bis. Ribita Sc.1'

Scanner 'Z+F IMAGER 5016' serial number '5016-0100' Firmware 9.0.3.6562-0  
Scan resolution 'High' quality 'Normal'

**Metadata**    **Value**  
**comment**  
**operator**

```
Scan command: c:\1_RCServer 9.0.3\memorize 1 -file "Bis. Ribita Sc.1" -scanpos "2" -path "Biserica Ribita" -project "Biserica Ribita" -projectTemplate "" -compensator nav -temperature "20" -camera "1-cam" -panoramaparams fast-resolution h -quality default -ifrom "0" -to "181" -ifrom1 "20" -to1 "340"
Sensor
sensors: 3100 ' barometer translation rotation gps'
Barometer: 0.986230 bar 227.408 m
nav translation: 4.6400 m -0.5365 m 227.6441 m accuracies: 7.4423 m 7.4423 m 0.0001 m
nav rotation: 0.0000 0.0000 22.1444 accuracies: 0.0000 0.0000 15.0000
upside-down: no
GPS lat:46.178185 long:22.764471 satellites:7 height:307.5m hdop:1.0 vdop:1.5m hacc:3.7m vacc:4.8 flags:G3 'stand alone 3D solution'
north:5115358.528 m east:636186.989 m zone:34T
Initial pre position (3:outdoor)
0.926 0.377 0.000 4.665
-0.377 0.926 0.000 -4.899
0.000 0.000 1.000 0.952
0.000 0.000 0.000 1.000
```

Level system info: dynamic compensator available.





# Scan position '20'

Scan position is member of group(s):

Status registration '[102h] registered with cloud to cloud'

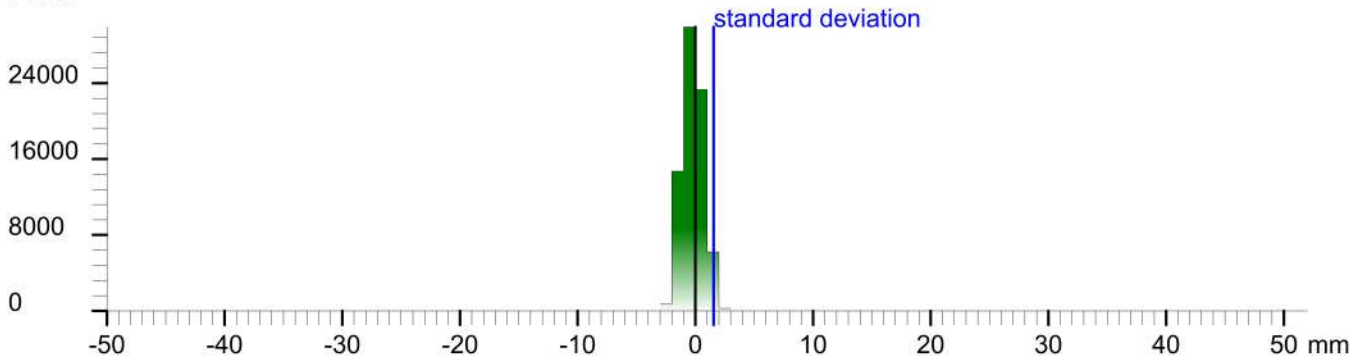
Registration matrix:

0.956207	0.292680	0.002627	25.4768 m
-0.292680	0.956210	-0.000435	-0.4031 m
-0.002639	-0.000353	0.999996	0.3159 m
0.000000	0.000000	0.000000	1.0000

Result registration cloud to cloud standard deviation: 1.6 mm

## Deviation histogram

Points



## Scan 'Bis. Ribita Sc.20'

Scanner 'Z+F IMAGER 5016' serial number '5016-0100' Firmware 9.0.3.6562-0

Scan resolution 'High' quality 'Normal'

Metadata	Value
comment	
operator	

Scan command: `cd /home/.../RCScanner 9.0.3/ -memorize 1 -file "Bis. Ribita Sc.20" -scanarea "20" -path "Biserica Ribita" -project "Biserica Ribita" -projectTemplate "" -compensator -nav -temperature "20" -camera "i-cam" -panoramasparams test -resolution h -quality default -ifrom "0" -to "101" -hfrom "20" -hto "340"`

Sensor  
sensors: 3096 'barometer translation rotation'  
Barometer: 0.985013 bar 237.772 m  
nav translation: 1.7580 m 0.6100 m 237.3318 m accuracies: 6.0600 m 6.0600 m 0.0000 m  
nav rotation: 0.0000 0.0000 13.6015 accuracies: 0.0000 0.0000 15.0000  
upside-down: no  
Initial pre position (0:indoor)  
0.972 0.235 0.000 20.290  
-0.235 0.972 0.000 8.032  
0.000 0.000 1.000 10.238  
0.000 0.000 0.000 1.000

Level system info: dynamic compensator available.



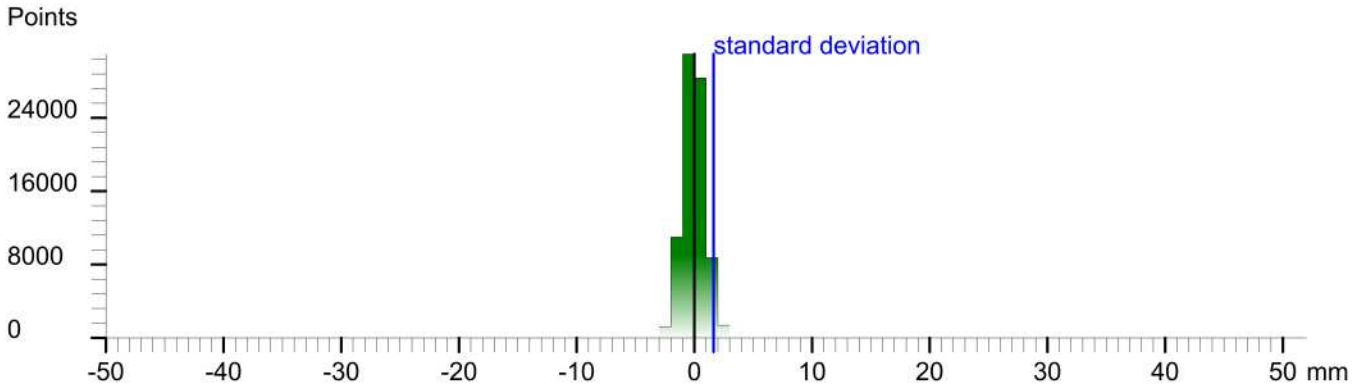
# Scan position '21'

Scan position is member of group(s):  
Status registration '[102h] registered with cloud to cloud'  
Registration matrix:

0.966847	0.255351	0.001718	23.3845 m
-0.255351	0.966849	-0.000344	-2.9022 m
-0.001749	-0.000106	0.999998	0.3155 m
0.000000	0.000000	0.000000	1.0000

Result registration cloud to cloud standard deviation: 1.6 mm

## Deviation histogram



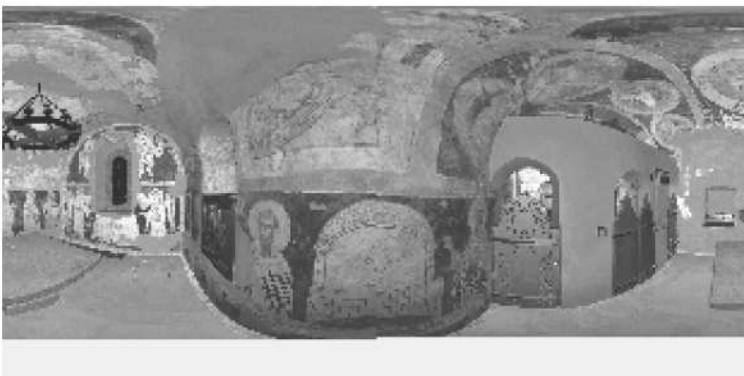
## Scan 'Bis. Ribita Sc.21'

Scanner 'Z+F IMAGER 5016' serial number '5016-0100' Firmware 9.0.3.6562-0  
Scan resolution 'High' quality 'Normal'

Metadata	Value
comment	
operator	

```
Scan command: -cli "Z+F IMAGER 9.0.3" -memorize 1 -file "Bis. Ribita Sc.21" -scanpos "21" -path "Biserica Ribita" -project "Biserica Ribita" -projectTemplate "" -compensator -nav -temperature "20" -camera "i-cam" -panoramaparams test -resolution h -quality default -ifrom "0" -to "101" -hfrom "20" -to "340"
Sensor
sensors: 3096 ' barometer translation rotation'
Barometer: 0.984952 bar 238.293 m
nav translation: -0.8133 m -1.2419 m 238.5198 m accuracies: 5.8684 m 5.8684 m 0.0001 m
nav rotation: 0.0000 0.0000 15.4296 accuracies: 0.0000 0.0000 15.0000
upside-down: no
Initial pre position (0:indoor)
0.964 0.266 0.000 19.477
-0.266 0.964 0.000 6.790
0.000 0.000 1.000 11.426
0.000 0.000 0.000 1.000
```

Level system info: dynamic compensator available.



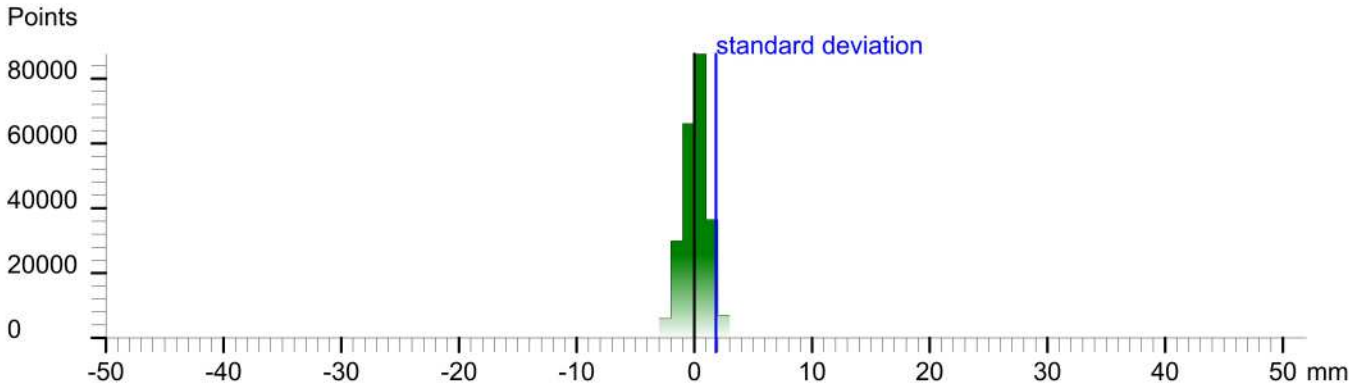
# Scan position '23'

Scan position is member of group(s):  
Status registration '[102h] registered with cloud to cloud'  
Registration matrix:

```
-0.229323 -0.973348 0.002099 18.9126 m  
0.973350 -0.229324 -0.000142 0.4500 m  
0.000620 0.002010 0.999998 0.2282 m  
0.000000 0.000000 0.000000 1.0000
```

Result registration cloud to cloud standard deviation: 1.8 mm

## Deviation histogram



## Scan 'Bis. Ribita Sc.23'

Scanner 'Z+F IMAGER 5016' serial number '5016-0100' Firmware 9.0.3.6562-0  
Scan resolution 'High' quality 'Normal'

Metadata	Value
comment	
operator	

```
Scan command: -cli "ZCSense 9.0.3" -memorize 1 -file "Bis. Ribita Sc.23" -scanner "23" -path "Biserica Ribita" -project "Biserica Ribita" -projectTemplate "" -compensator -nav -temperature "20" -camera "i-cam" -panoramasparams test -resolution h -quality default -ifrom "0" -to "101" -hfrom "20" -hto "340"  
Sensor  
sensors: 3096 ' barometer translation rotation'  
Barometer: 0.984891 bar 238.805 m  
nav translation: 0.0000 m 0.0000 m 238.3383 m accuracies: 5.1000 m 5.1000 m 0.0001 m  
nav rotation: 0.0000 0.0000 257.7969 accuracies: 0.0000 0.0000 15.0000  
upside-down: no  
Initial pre position (0:indoor)  
-0.211 -0.977 0.000 19.477  
0.977 -0.211 0.000 6.790  
0.000 0.000 1.000 11.245  
0.000 0.000 0.000 1.000
```

Level system info: dynamic compensator available.



# Scan position '24'

Scan position is member of group(s):

Status registration '[102h] registered with cloud to cloud'

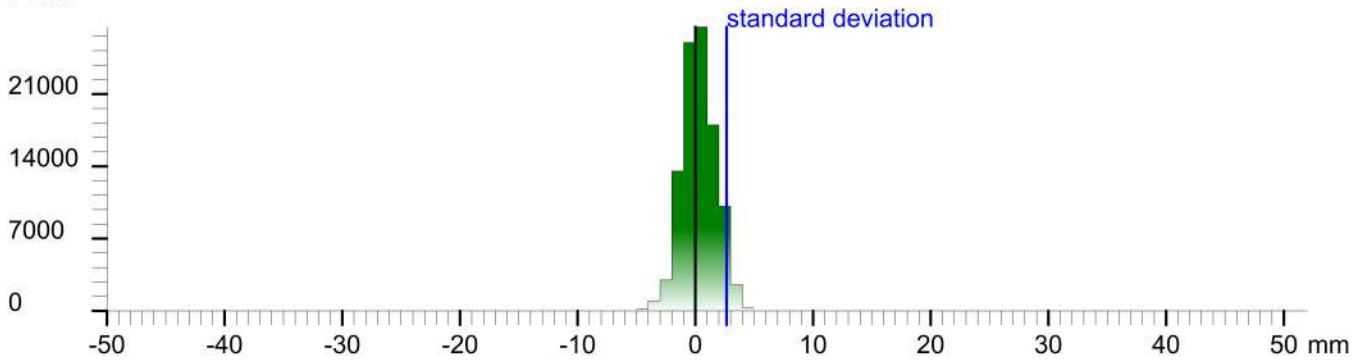
Registration matrix:

```
0.637433 -0.770506 -0.000531 13.4107 m
0.770505 0.637433 -0.001224 -0.4898 m
0.001282 0.000371 0.999999 2.5465 m
0.000000 0.000000 0.000000 1.0000
```

Result registration cloud to cloud standard deviation: 2.7 mm

## Deviation histogram

Points



## Scan 'Bis. Ribita Sc.24'

Scanner 'Z+F IMAGER 5016' serial number '5016-0100' Firmware 9.0.3.6562-0

Scan resolution 'High' quality 'Normal'

Metadata	Value
comment	
operator	

```
Scan command: -crl "Z+F IMAGER 9.0.3" -memorize 1 -file "Bis. Ribita Sc.24" -scanner "24" -path "Biserica Ribita" -project "Biserica Ribita" -projectTemplate "" -nav -temperature "20" -camera "cam" -panoramaparams fast-resolution h-quality default -from "0" -to "101" -interval "20" -file "340"
```

Sensor

```
sensors: 3096 'barometer translation rotation'
Barometer: 0.984643 bar 240.92 m
nav translation: -17.6881 m -3.7495 m 240.7468 m accuracies: 14.2156 m 14.2156 m 0.0001 m
nav rotation: 0.0000 0.0000 300.7776 accuracies: 0.0000 0.0000 15.0000
upside-down: no
Initial pre position (0:indoor)
0.512 -0.859 0.000 1.788
0.859 0.512 0.000 3.041
0.000 0.000 1.000 13.653
0.000 0.000 0.000 1.000
```

Level system info: no information about the level system stored in the zfs header



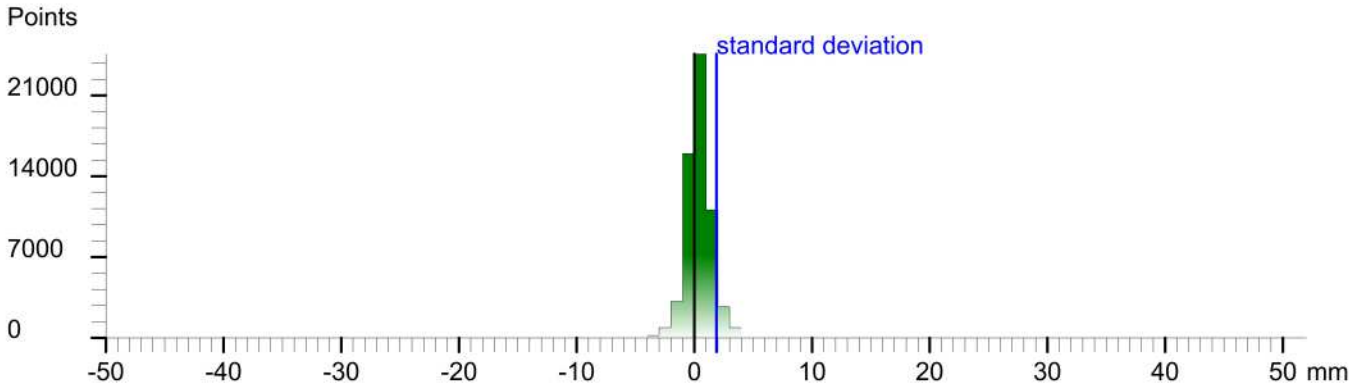
# Scan position '25'

Scan position is member of group(s):  
Status registration '[102h] registered with cloud to cloud'  
Registration matrix:

```
-0.137987 -0.990433 -0.001595 12.5250 m  
0.990434 -0.137985 -0.001196 -1.2925 m  
0.000964 -0.001745 0.999998 2.5623 m  
0.000000 0.000000 0.000000 1.0000
```

Result registration cloud to cloud standard deviation: 1.9 mm

## Deviation histogram



## Scan 'Bis. Ribita Sc.25'

Scanner 'Z+F IMAGER 5016' serial number '5016-0100' Firmware 9.0.3.6562-0  
Scan resolution 'High' quality 'Normal'

Metadata	Value
comment	
operator	

```
Scan command: -crl "ZFSensor 9.0.3" -memorize 1 -file "Bis. Ribita Sc.25" -scanner "25" -path "Biserica Ribita" -project "Biserica Ribita" -projectTemplate "" -nav -temperature "20" -camera "cam" -panoramaparams fast-resolution h-quality default -from "0" -to "10" -interval "20" -file "340"  
Sensor  
sensors: 3096 ' barometer translation rotation'  
Barometer: 0.984626 bar 241.065 m  
nav translation: -1.6844 m 0.6485 m 240.4146 m accuracies: 6.0046 m 6.0046 m 0.0001 m  
nav rotation: 0.0000 0.0000 249.1398 accuracies: 0.0000 0.0000 15.0000  
upside-down: no  
Initial pre position (0:indoor)  
-0.356 -0.934 0.000 0.104  
0.934 -0.356 0.000 3.689  
0.000 0.000 1.000 13.321  
0.000 0.000 0.000 1.000
```

Level system info: no information about the level system stored in the zfs header





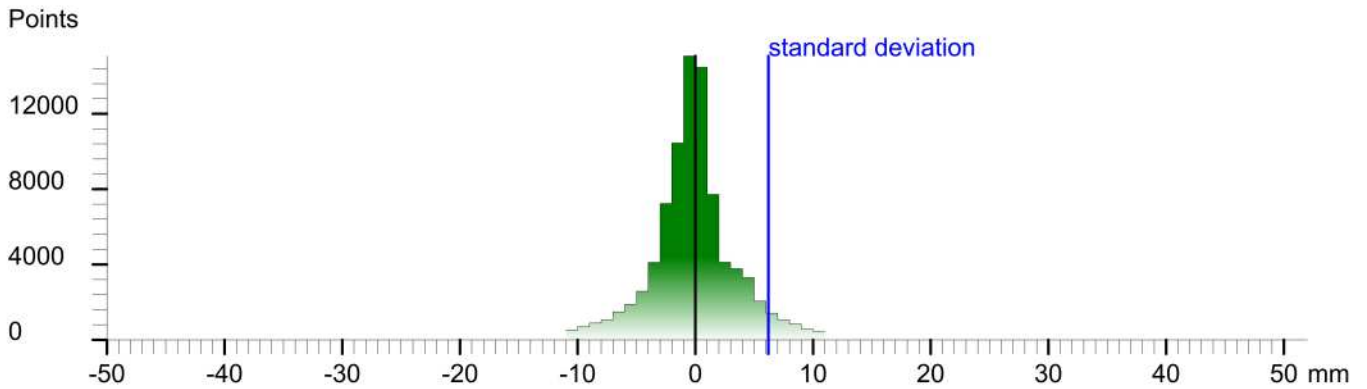
# Scan position '26'

Scan position is member of group(s):  
Status registration '[102h] registered with cloud to cloud'  
Registration matrix:

```
-0.375065 -0.926999 0.000302 -5.8582 m  
0.926998 -0.375065 -0.001297 13.5167 m  
0.001316 -0.000206 0.999999 1.3220 m  
0.000000 0.000000 0.000000 1.0000
```

Result registration cloud to cloud standard deviation:6.2 mm

## Deviation histogram



## Scan 'Bis. Ribita Sc.26'

Scanner 'Z+F IMAGER 5016' serial number '5016-0100' Firmware 9.0.3.6562-0  
Scan resolution 'High' quality 'Normal'

**Metadata**    **Value**  
**comment**  
**operator**

```
Scan command: -crl "Z+F IMAGER 9.0.3" -memorize 1 -file "Bis. Ribita Sc.26" -screener "26" -path "Biserica Ribita" -project "Biserica Ribita" -projectTemplate "" -compensator -cav -temperature "20" -camera "i-cam" -panoramasparams:feed-resolution h-quality default -from "0" -to "101" -hfrom "20" -hro "340"  
Sensor  
sensors: 3100 " barometer translation rotation gps"  
Barometer: 0.984685 bar 240.567 m  
nav translation: -2.5756 m 6.1834 m 240.1821 m accuracies: 8.2996 m 8.2996 m 0.0000 m  
nav rotation: 0.0000 0.0000 246.9729 accuracies: 0.0000 0.0000 15.0000  
upside-down: no  
GPS lat:46.178310 long:22.764320 satellites:8 height:301.4m hdop:1.1 vdop:1.3m haacc:5.7m vacc:8.8 flags:G3 'stand alone 3D solution'  
north:5115372.257 m east:636175.048 m zone:34T  
Initial pre position (3:outdoor)  
-0.391 -0.920 0.000 -7.298  
0.920 -0.391 0.000 8.731  
0.000 0.000 1.000 13.089  
0.000 0.000 0.000 1.000
```

Level system info: dynamic compensator available.





# Scan position '27'

Scan position is member of group(s):

Status registration '[102h] registered with cloud to cloud'

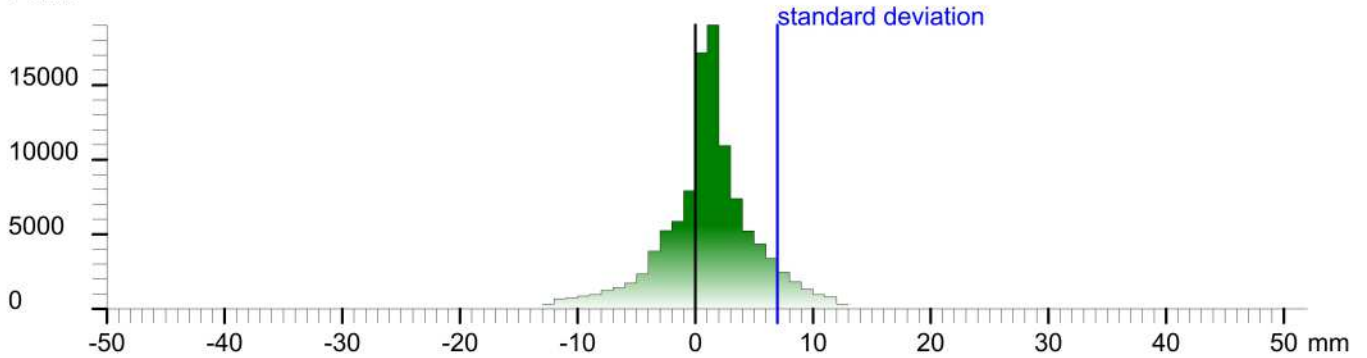
Registration matrix:

```
-0.979013  0.203796  0.001140 -16.1363 m
-0.203798 -0.979012 -0.001382 -1.0322 m
0.000834  -0.001585  0.999998  -0.3545 m
0.000000  0.000000  0.000000  1.0000
```

Result registration cloud to cloud standard deviation: 7.0 mm

## Deviation histogram

Points



## Scan 'Bis. Ribita Sc.27'

Scanner 'Z+F IMAGER 5016' serial number '5016-0100' Firmware 9.0.3.6562-0

Scan resolution 'High' quality 'Normal'

**Metadata**    **Value**  
**comment**  
**operator**

```
Scan command: -cli "Z+F IMAGER 9.0.3" -memorize 1 -file "Bis. Ribita Sc.27" -scanarea "27" -path "Biserica Ribita" -project "Biserica Ribita" -projectTemplate "" -compensator -nav -temperature "20" -camera "i-cam" -panoramasparams test -resolution h -quality default -ifrom "0" -to "101" -hfrom "20" -hro "340"
```

Sensor  
sensors: 3100 \* barometer translation rotation gps\*  
Barometer: 0.984865 bar 239.029 m  
nav translation: -28.1400 m 3.5860 m 238.7461 m accuracies: 19.8238 m 19.8238 m 0.0000 m  
nav rotation: 0.0000 0.0000 162.9037 accuracies: 0.0000 0.0000 15.0000  
upside-down: no  
GPS lat:46.178215 long:22.764219 satellites:8 height:306.7m hdop:1.1 vdop:1.9m haacc:3.9m vacc:6.6 flags:G3 'stand alone 3D solution'  
north:5115361.487 m east:636167.481 m zone:34T  
Initial pre position (3:outdoor)  
-0.956 0.294 0.000 -14.859  
-0.294 -0.956 0.000 -1.998  
0.000 0.000 1.000 11.653  
0.000 0.000 0.000 1.000

Level system info: dynamic compensator available.



# Scan position '28'

Scan position is member of group(s):

Status registration '[122h] preregistered with cloud to cloud'

Registration matrix:

-0.089858	-0.995954	-0.000267	-37.2550 m
0.995954	-0.089858	-0.001195	-25.9766 m
0.001166	-0.000373	0.999999	-2.7661 m
0.000000	0.000000	0.000000	1.0000

## Scan 'Bis. Ribita Sc.28'

Scanner 'Z+F IMAGER 5016' serial number '5016-0100' Firmware 9.0.3.6562-0

Scan resolution 'High' quality 'Normal'

Metadata	Value
comment	
operator	

Scan command: `cd /usr/local/bin; ./rcserver 9.0.3 --memorize 1 -file "Bis. Ribita Sc.28" -scans "28" -path "Biserica Ribita" -project "Biserica Ribita" -projectTemplate "" -compensator -nav -temperature "20" -camera "1-cam" -panoramaparams test -resolution h -quality default -ifrom "0" -to "181" -ifrom1 "20" -to1 "340"`

### Sensor

sensors: 3100 ' barometer translation rotation gps'  
Barometer: 0.985263 bar 235.641 m  
nav translation: -37.5902 m -13.5540 m 235.9574 m accuracies: 25.5082 m 25.5082 m 0.0000 m  
nav rotation: 0.0000 0.0000 267.2865 accuracies: 0.0000 0.0000 15.0000  
upside-down: no  
GPS lat:46.177998 long:22.763945 satellites:8 height:303.7m hdop:1.1 vdop:1.7m hacc:4.2m vacc:7.7 flags:G3 'stand alone 3D solution'  
north:5115336.857 m east:636146.820 m zone:34T  
Initial pre position (3:outdoor)  
-0.047 -0.999 0.000 -35.471  
0.999 -0.047 0.000 -26.578  
0.000 0.000 1.000 8.864  
0.000 0.000 0.000 1.000

Level system info: dynamic compensator available.



# Scan position '29'

Scan position is member of group(s):

Status registration '[102h] registered with cloud to cloud'

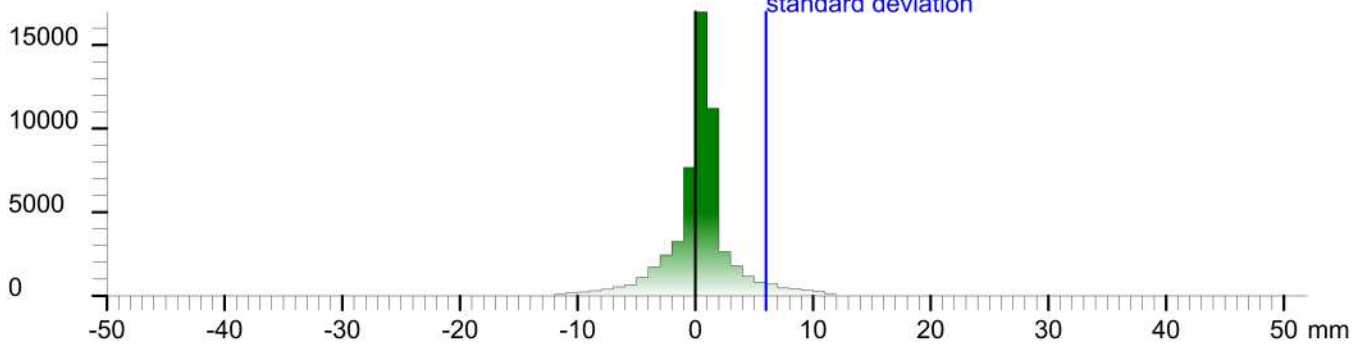
Registration matrix:

```
0.712256 0.701919 0.001440 11.6412 m
-0.701920 0.712256 0.000492 21.3054 m
-0.000680 -0.001361 0.999999 1.3787 m
0.000000 0.000000 0.000000 1.0000
```

Result registration cloud to cloud standard deviation:6.0 mm

## Deviation histogram

Points



## Scan 'Bis. Ribita Sc.29'

Scanner 'Z+F IMAGER 5016' serial number '5016-0100' Firmware 9.0.3.6562-0

Scan resolution 'High' quality 'Normal'

**Metadata**    **Value**  
**comment**  
**operator**

```
Scan command: -crl "RCSense 9.0.3" -memorize 1 -file "Bis. Ribita Sc.29" -scanset "29" -path "Biserica Ribita" -project "Biserica Ribita" -projectTemplate "" -compensator -cav -temperature "20" -camera "i-cam" -panoramaparams test -resolution h -quality default -ifrom "0" -to "101" -hfrom "20" -hro "340"
Sensor
sensors: 3100 " barometer translation rotation gps"
Barometer: 0.984693 bar 240.494 m
nav translation: 45.5761 m -16.5585 m 240.5616 m accuracies: 29.5851 m 29.5851 m 0.0001 m
nav rotation: 0.0000 0.0000 44.5770 accuracies: 0.0000 0.0000 15.0000
upside-down: no
GPS lat:46.178417 long:22.764584 satellites:9 height:308.6m hdop:1.0 vdop:1.7m haacc:3.6m vacc:5.7 flags:G3 'stand alone 3D solution'
north:5115384.576 m east:636195.100 m zone:34T
Initial pre position (4:1m)
1.000 0.000 0.000 0.000
0.000 1.000 0.000 0.000
0.000 0.000 1.000 0.000
0.000 0.000 0.000 1.000
```

Level system info: dynamic compensator available.



# Scan position '3'

Scan position is member of group(s):

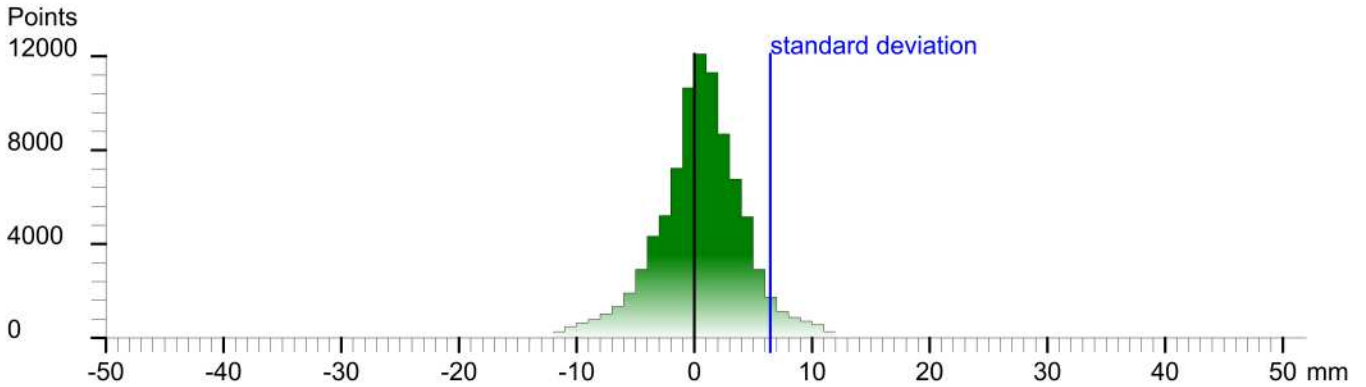
Status registration '[102h] registered with cloud to cloud'

Registration matrix:

```
0.138770 0.990324 0.001267 8.8491 m
-0.990324 0.138771 -0.000864 -9.5241 m
-0.001032 -0.001134 0.999999 -0.1872 m
0.000000 0.000000 0.000000 1.0000
```

Result registration cloud to cloud standard deviation:6.4 mm

## Deviation histogram



## Scan 'Bis. Ribita Sc.2'

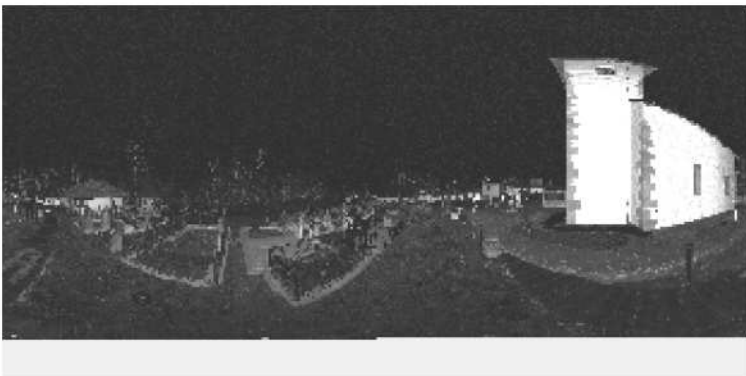
Scanner 'Z+F IMAGER 5016' serial number '5016-0100' Firmware 9.0.3.6562-0

Scan resolution 'High' quality 'Normal'

**Metadata**    **Value**  
**comment**  
**operator**

```
Scan command: -crl "Z+F IMAGER 9.0.3" -memorize 1 -file "Bis. Ribita Sc.2" -scanpos "3" -path "Biserica Ribita" -project "Biserica Ribita" -projectTemplate "" -compensator -nav -temperature "20" -camera "i-cam" -panoramaparams test-resolution h -quality default -from "0" -to "10" -h-bom1 "20" -h-a1 "340"
Sensor
sensors: 3100 * barometer translation rotation gps*
Barometer: 0.986273 bar 227.044 m
nav translation: 9.4566 m -2.4878 m 226.9001 m accuracies: 10.0136 m 10.0136 m 0.0000 m
nav rotation: 0.0000 0.0000 81.3575 accuracies: 0.0000 0.0000 15.0000
upside-down: no
GPS lat:46.178127 long:22.764547 satellites:7 height:306.4m hdop:1.1 vdop:1.6m haacc:4.6m vacc:6.1 flags:G3 'stand alone 3D solution'
north:5115352.302 m east:636193.019 m zone:34T
Initial pre position (3:outdoor)
0.150 0.989 0.000 10.674
-0.989 0.150 0.000 -11.213
0.000 0.000 1.000 0.208
0.000 0.000 0.000 1.000
```

Level system info: dynamic compensator available.



# Scan position '30'

Scan position is member of group(s):

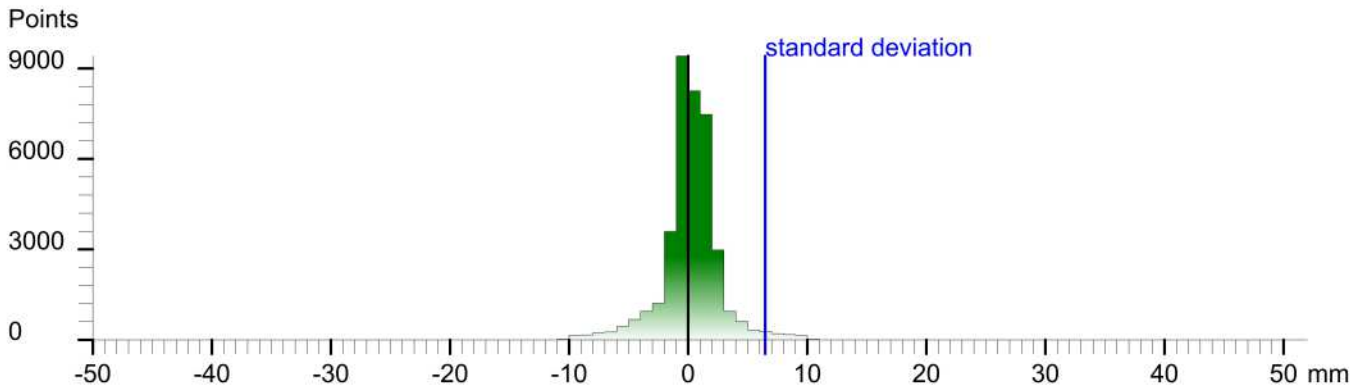
Status registration '[102h] registered with cloud to cloud'

Registration matrix:

```
0.706632 0.707577 0.002284 21.6993 m
-0.707581 0.706630 0.001744 21.9231 m
-0.000380 -0.002848 0.999996 1.2015 m
0.000000 0.000000 0.000000 1.0000
```

Result registration cloud to cloud standard deviation:6.5 mm

## Deviation histogram



## Scan 'Bis. Ribita Sc.30'

Scanner 'Z+F IMAGER 5016' serial number '5016-0100' Firmware 9.0.3.6562-0

Scan resolution 'High' quality 'Normal'

**Metadata**    **Value**  
**comment**  
**operator**

```
Scan command: -cli "Z+F IMAGER 9.0.3" -memorize 1 -file "Bis. Ribita Sc.30" -scanpos "30" -path "Biserica Ribita" -project "Biserica Ribita" -projectTemplate "" -compensator -nav -temperature "20" -camera "i-cam" -panoramaparams test -resolution h -quality default -from "0" -to "101" -hfrom "20" -hto "340"
Sensor
sensors: 3100 " barometer translation rotation gps"
Barometer: 0.984620 bar 241.12 m
nav translation: 12.4533 m -0.2562 m 241.2421 m accuracies: 11.3993 m 11.3993 m 0.0001 m
nav rotation: 0.0000 0.0000 41.7053 accuracies: 0.0000 0.0000 15.0000
upside-down: no
GPS lat:46.178410 long:22.764725 satellites:8 height:308.3m hdop:1.1 vdop:1.7m haacc:3.3m vacc:5.9 flags:G3 'stand alone 3D solution'
north:5115383.970 m east:636206.012 m zone:34T
Initial pre position (3:outdoor)
0.747 0.665 0.000 23.713
-0.665 0.747 0.000 20.536
0.000 0.000 1.000 14.149
0.000 0.000 0.000 1.000
```

Level system info: dynamic compensator available.





# Scan position '31'

Scan position is member of group(s):

Status registration '[102h] registered with cloud to cloud'

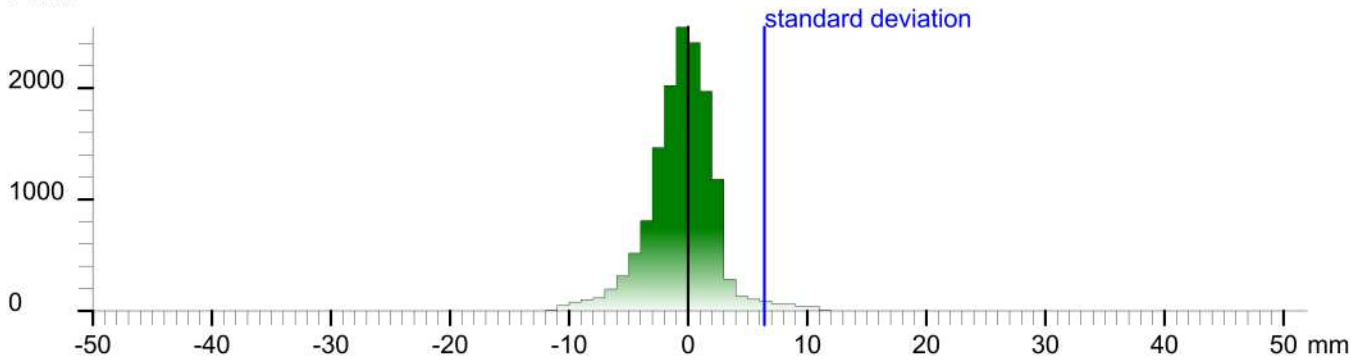
Registration matrix:

```
0.686588 -0.727046 0.000840 27.0426 m
0.727047 0.686588 0.000285 27.8394 m
-0.000784 0.000415 1.000000 -0.6325 m
0.000000 0.000000 0.000000 1.0000
```

Result registration cloud to cloud standard deviation:6.4 mm

## Deviation histogram

Points



## Scan 'Bis. Ribita Sc.31'

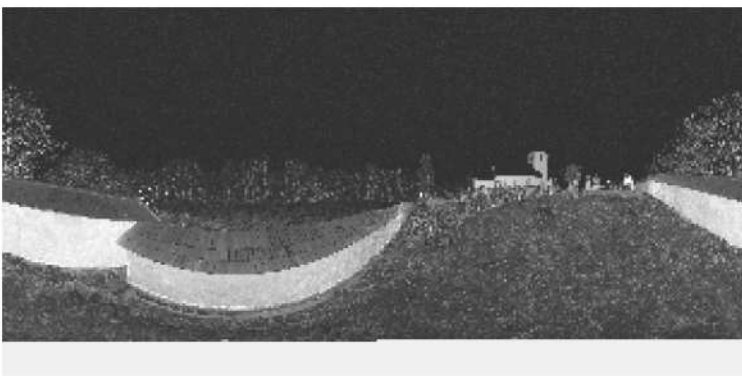
Scanner 'Z+F IMAGER 5016' serial number '5016-0100' Firmware 9.0.3.6562-0

Scan resolution 'High' quality 'Normal'

**Metadata**    **Value**  
**comment**  
**operator**

```
Scan command: -cli "Z+F IMAGER 9.0.3" -memorize 1 -file "Bis. Ribita Sc.31" -scanarea "31" -path "Biserica Ribita" -project "Biserica Ribita" -projectTemplate "" -compensator -nav -temperature "20" -camera "i-cam" -panoramasparameters -test -resolution h -quality default -ifrom "0" -to "101" -hfrom "20" -hto "340"
Sensor
sensors: 3100 " barometer translation rotation gps"
Barometer: 0.984814 bar 239.47 m
nav translation: 5.9841 m 9.2087 m 239.6552 m accuracies: 10.6443 m 10.6443 m 0.0000 m
nav rotation: 0.0000 0.0000 314.5002 accuracies: 0.0000 0.0000 15.0000
upside-down: no
GPS lat:46.178467 long:22.764784 satellites:8 height:304.8m hdop:1.1 vdop:2.0m haacc:3.7m vacc:8.5 flags:G3 'stand alone 3D solution'
north:5115390.429 m east:636210.434 m zone:34T
Initial pre position (3:outdoor)
0.701 -0.713 0.000 28.126
0.713 0.701 0.000 26.971
0.000 0.000 1.000 12.562
0.000 0.000 0.000 1.000
```

Level system info: dynamic compensator available.





# Scan position '32'

Scan position is member of group(s):

Status registration '[102h] registered with cloud to cloud'

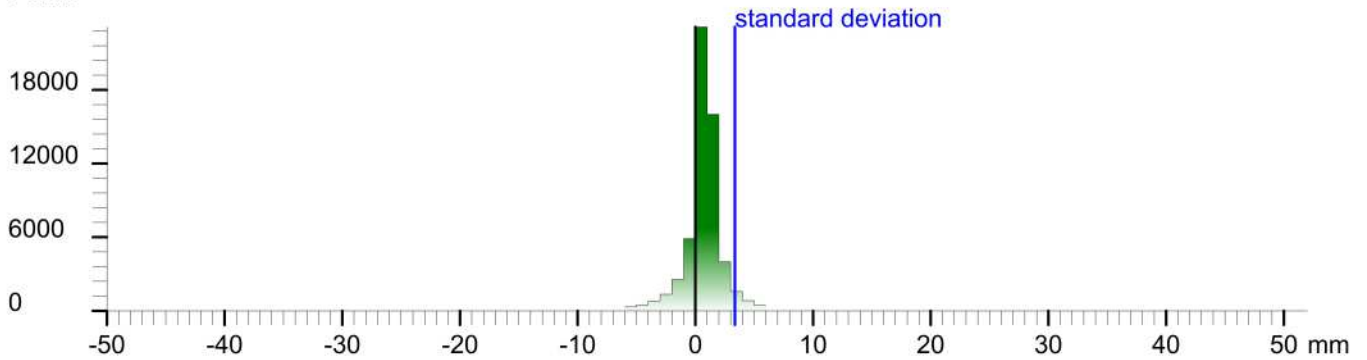
Registration matrix:

```
0.934361 -0.356326 0.001190 34.5055 m
0.356326 0.934362 0.000188 10.5199 m
-0.001179 0.000248 0.999999 -0.0833 m
0.000000 0.000000 0.000000 1.0000
```

Result registration cloud to cloud standard deviation:3.4 mm

## Deviation histogram

Points



## Scan 'Bis. Ribita Sc.32'

Scanner 'Z+F IMAGER 5016' serial number '5016-0100' Firmware 9.0.3.6562-0

Scan resolution 'High' quality 'Normal'

**Metadata**    **Value**  
**comment**  
**operator**

```
Scan command: -crl "Z+F IMAGER 9.0.3" -memorize 1 -file "Bis. Ribita Sc.32" -screener "32" -path "Biserica Ribita" -project "Biserica Ribita" -projectTemplate "" -compensator -nav -temperature "20" -camera "i-cam" -panoramaparams test -resolution h -quality default -from "0" -to "101" -hfrom "20" -hro "340"
```

Sensor  
sensors: 3100 ' barometer translation rotation gps'  
Barometer: 0.984538 bar 241.816 m  
nav translation: 14.0038 m -27.9038 m 240.9195 m accuracies: 20.8879 m 20.8879 m 0.0000 m  
nav rotation: 0.0000 0.0000 343.1429 accuracies: 0.0000 0.0000 15.0000  
upside-down: no  
GPS lat:46.178310 long:22.764875 satellites:9 height:307.4m hdop:1.0 vdop:1.6m haacc:3.3m vacc:6.1 flags:G3 'stand alone 3D solution'  
north:5115373.209 m east:636217.887 m zone:34T  
Initial pre position (3:outdoor)  
0.957 -0.290 0.000 35.538  
0.290 0.957 0.000 9.683  
0.000 0.000 1.000 13.826  
0.000 0.000 0.000 1.000

Level system info: dynamic compensator available.



# Scan position '33'

Scan position is member of group(s):

Status registration '[102h] registered with cloud to cloud'

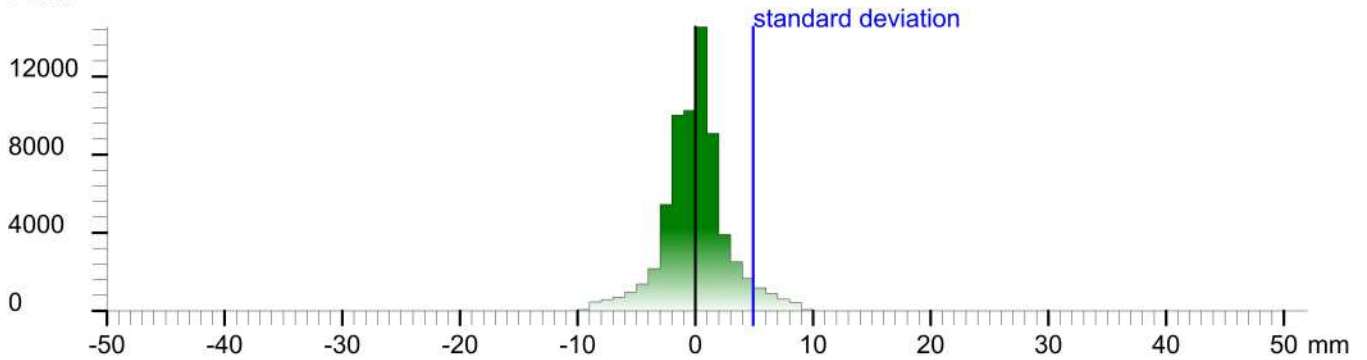
Registration matrix:

```
0.870808 0.491623 0.001018 36.2755 m
-0.491623 0.870808 -0.000421 -14.2742 m
-0.001094 -0.000134 0.999999 -1.6911 m
0.000000 0.000000 0.000000 1.0000
```

Result registration cloud to cloud standard deviation:4.9 mm

## Deviation histogram

Points



## Scan 'Bis. Ribita Sc.33'

Scanner 'Z+F IMAGER 5016' serial number '5016-0100' Firmware 9.0.3.6562-0

Scan resolution 'High' quality 'Normal'

**Metadata**    **Value**  
**comment**  
**operator**

```
Scan command: -crl "Z+F IMAGER 9.0.3" -memorize 1 -file "Bis. Ribita Sc.33" -script "33" -path "Biserica Ribita" -project "Biserica Ribita" -projectTemplate "" -compensator -nav -temperature "20" -camera "i-cam" -panoramasparams test -resolution h -quality default -from "0" -to "101" -hfrom "20" -hro "340"
```

Sensor  
sensors: 3100 " barometer translation rotation gps"  
Barometer: 0.984556 bar 241.666 m  
nav translation: 23.7770 m -23.0547 m 241.5029 m accuracies: 21.8363 m 21.8363 m 0.0001 m  
nav rotation: 0.0000 0.0000 29.2287 accuracies: 0.0000 0.0000 15.0000  
upside-down: no  
GPS lat:46.178082 long:22.764894 satellites:7 height:304.2m hdop:1.3 vdop:2.3m haacc:3.8m vacc:7.4 flags:G3 'stand alone 3D solution'  
north:5115347.811 m east:636219.924 m zone:34T  
Initial pre position (3:outdoor)  
0.873 0.488 0.000 37.567  
-0.488 0.873 0.000 -15.617  
0.000 0.000 1.000 14.410  
0.000 0.000 0.000 1.000

Level system info: dynamic compensator available.



# Scan position '34'

Scan position is member of group(s):

Status registration '[102h] registered with cloud to cloud'

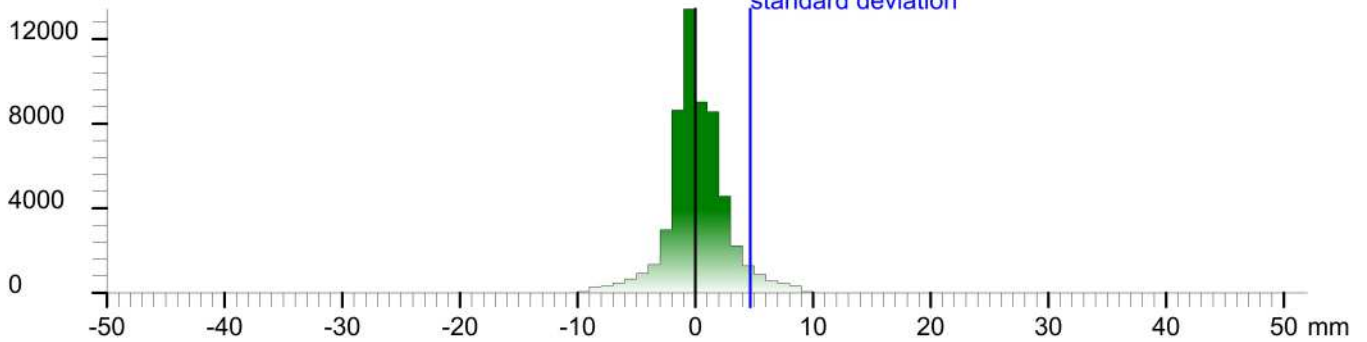
Registration matrix:

0.798677	0.601757	0.001866	34.8875 m
-0.601757	0.798679	-0.000731	-20.0012 m
-0.001930	-0.000539	0.999998	-1.9059 m
0.000000	0.000000	0.000000	1.0000

Result registration cloud to cloud standard deviation:4.7 mm

## Deviation histogram

Points



## Scan 'Bis. Ribita Sc.34'

Scanner 'Z+F IMAGER 5016' serial number '5016-0100' Firmware 9.0.3.6562-0

Scan resolution 'High' quality 'Normal'

**Metadata**    **Value**  
**comment**  
**operator**

```
Scan command: -cli "Z+F IMAGER 9.0.3" -memorize 1 -file "Bis. Ribita Sc.34" -script "34" -path "Biserica Ribita" -project "Biserica Ribita" -projectTemplate "" -compensator -nav -temperature "20" -camera "i-cam" -panoramasparams test -resolution h -quality default -from "0" -to "101" -hfrom "20" -hno "340"
```

Sensors: 3100 ° barometer translation rotation gps  
Barometer: 0.984628 bar 241.052 m  
nav translation: 1.6322 m -4.6761 m 241.2432 m accuracies: 7.6030 m 7.6030 m 0.0000 m  
nav rotation: 0.0000 0.0000 28.4392 accuracies: 0.0000 0.0000 15.0000  
upside-down: no  
GPS lat:46.178028 long:22.764874 satellites:5 height:304.1m hdop:1.7 vdop:4.2m haacc:4.3m vacc:8.6 flags:G3 'stand alone 3D solution'  
north:5115341.841 m east:636218.437 m zone:34T  
Initial pre position (3:outdoor)  
0.879 0.476 0.000 36.157  
-0.476 0.879 0.000 -21.651  
0.000 0.000 1.000 14.150  
0.000 0.000 0.000 1.000

Level system info: dynamic compensator available.



# Scan position '35'

Scan position is member of group(s):

Status registration '[102h] registered with cloud to cloud'

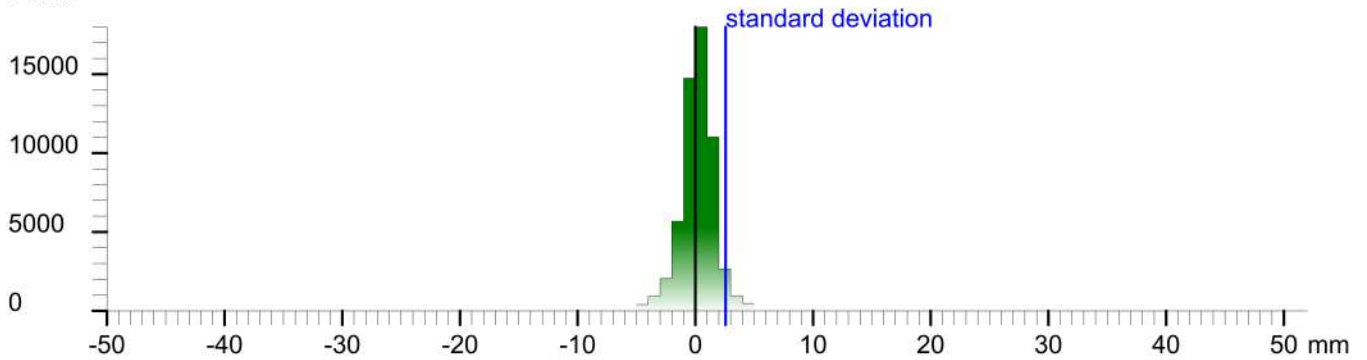
Registration matrix:

```
-0.287894  0.957659  0.002383  37.0247 m
-0.957662 -0.287892 -0.001184 -22.4486 m
-0.000448 -0.002623  0.999996  -2.0927 m
0.000000  0.000000  0.000000  1.0000
```

Result registration cloud to cloud standard deviation:2.6 mm

## Deviation histogram

Points



## Scan 'Bis. Ribita Sc.35'

Scanner 'Z+F IMAGER 5016' serial number '5016-0100' Firmware 9.0.3.6562-0

Scan resolution 'High' quality 'Normal'

**Metadata**    **Value**  
**comment**  
**operator**

```
Scan command: -cli "Z+F IMAGER 9.0.3" -memorize 1 -file "Bis. Ribita Sc.35" -screener "35" -path "Biserica Ribita" -project "Biserica Ribita" -projectTemplate "" -compensator -nav -temperature "20" -camera "i-cam" -panoramasparams test -resolution h -quality default -from "0" -to "101" -hfrom "20" -to "1" "340"
```

Sensor  
sensors: 3100 ' barometer translation rotation gps'  
Barometer: 0.984651 bar 240.856 m  
nav translation: 3.2775 m -2.1534 m 240.6478 m accuracies: 7.0707 m 7.0707 m 0.0000 m  
nav rotation: 0.0000 0.0000 123.5729 accuracies: 0.0000 0.0000 15.0000  
upside-down: no  
GPS lat:46.177967 long:22.765041 satellites:6 height:310.6m hdop:1.8 vdop:2.8m haacc:9.6m vacc:12.0 flags:G3 'stand alone 3D solution'  
north:5115335.348 m east:636231.543 m zone:34T  
Initial pre position (3:outdoor)  
-0.553 0.833 0.000 49.197  
-0.833 -0.553 0.000 -28.142  
0.000 0.000 1.000 13.555  
0.000 0.000 0.000 1.000

Level system info: dynamic compensator available.



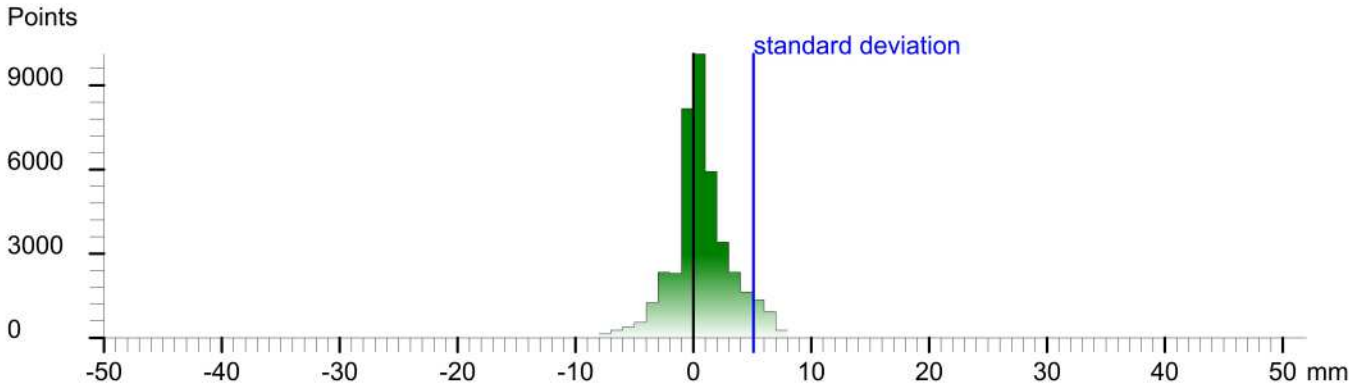
# Scan position '36'

Scan position is member of group(s):  
Status registration '[102h] registered with cloud to cloud'  
Registration matrix:

```
-0.426648  0.904413  0.002928  37.8215 m  
-0.904418 -0.426645 -0.001624 -31.3758 m  
-0.000220 -0.003341  0.999994  -2.2047 m  
0.000000  0.000000  0.000000  1.0000
```

Result registration cloud to cloud standard deviation:5.1 mm

## Deviation histogram



## Scan 'Bis. Ribita Sc.36'

Scanner 'Z+F IMAGER 5016' serial number '5016-0100' Firmware 9.0.3.6562-0  
Scan resolution 'High' quality 'Normal'

**Metadata**    **Value**  
**comment**  
**operator**

```
Scan command: -crl "Z+F IMAGER 9.0.3" -memorize 1 -file "Bis. Ribita Sc.36" -scanset "36" -path "Biserica Ribita" -project "Biserica Ribita" -projectTemplate "" -compensator -cav -temperature "20" -camera "i-cam" -panoramasparams test -resolution h -quality default -from "0" -to "101" -hfrom "20" -to "340"  
Sensor  
sensors: 3100 * barometer translation rotation gps*  
Barometer: 0.984452 bar 242.552 m  
nav translation: 1.7222 m -11.9454 m 242.1284 m accuracies: 11.1717 m 11.1717 m 0.0000 m  
nav rotation: 0.0000 0.0000 94.5236 accuracies: 0.0000 0.0000 15.0000  
upside-down: no  
GPS lat:46.177925 long:22.764929 satellites:6 height:303.0m hdop:2.1 vdop:4.6m haacc:4.4m vacc:7.1 flags:G3 'stand alone 3D solution'  
north:5115330.492 m east:636222.961 m zone:34T  
Initial pre position (3:outdoor)  
-0.079 0.997 0.000 50.919  
-0.997 -0.079 0.000 -40.088  
0.000 0.000 1.000 15.035  
0.000 0.000 0.000 1.000
```

Level system info: dynamic compensator available.





# Scan position '37'

Scan position is member of group(s):

Status registration '[102h] registered with cloud to cloud'

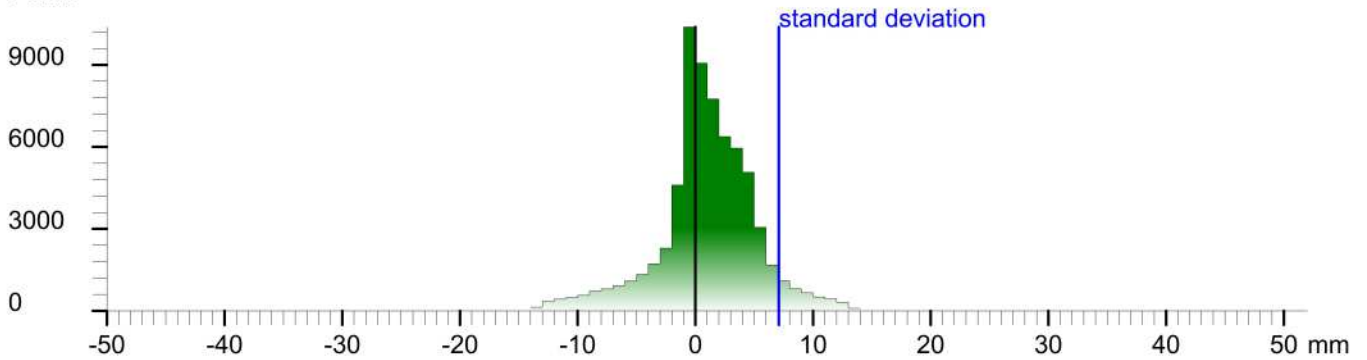
Registration matrix:

```
-0.906099  0.423061  0.002141  32.9354 m
-0.423065 -0.906097 -0.002109 -39.3829 m
0.001048  -0.002817  0.999995  -2.2226 m
0.000000  0.000000  0.000000  1.0000
```

Result registration cloud to cloud standard deviation: 7.1 mm

## Deviation histogram

Points



## Scan 'Bis. Ribita Sc.37'

Scanner 'Z+F IMAGER 5016' serial number '5016-0100' Firmware 9.0.3.6562-0

Scan resolution 'High' quality 'Normal'

**Metadata**    **Value**  
**comment**  
**operator**

```
Scan command: -crl "RCSense 9.0.3" -memorize 1 -file "Bis. Ribita Sc.37" -scanset "37" -path "Biserica Ribita" -project "Biserica Ribita" -projectTemplate "" -compensator -cav -temperature "20" -camera "i-cam" -panoramaparams test -resolution h -quality default -from "0" -to "101" -hfrom "20" -hro "340"
Sensor
sensors: 3100 " barometer translation rotation gps"
Barometer: 0.984428 bar 242.757 m
nav translation: 3.2954 m -6.7754 m 242.7615 m accuracies: 8.9144 m 8.9144 m 0.0000 m
nav rotation: 0.0000 0.0000 154.2953 accuracies: 0.0000 0.0000 15.0000
upside-down: no
GPS lat:46.177860 long:22.764839 satellites:9 height:308.6m hdop:1.0 vdop:1.3m haacc:3.7m vacc:5.9 flags:G3 'stand alone 3D solution'
north:5115323.133 m east:636216.202 m zone:34T
Initial pre position (3:outdoor)
-0.901 0.434 0.000 33.871
-0.434 -0.901 0.000 -40.377
0.000 0.000 1.000 15.668
0.000 0.000 0.000 1.000
```

Level system info: dynamic compensator available.





# Scan position '38'

Scan position is member of group(s):

Status registration '[102h] registered with cloud to cloud'

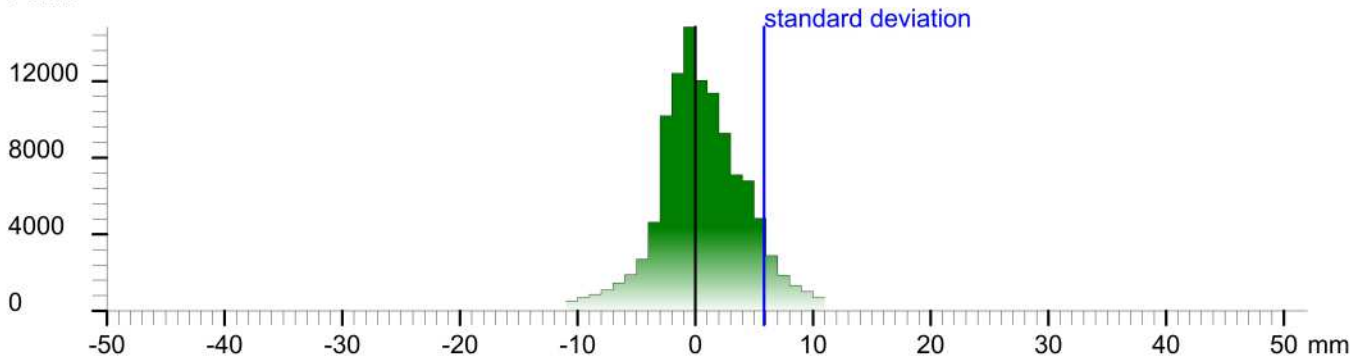
Registration matrix:

```
-0.821876 -0.569665 0.001303 22.8439 m
0.569662 -0.821877 -0.001858 -36.5459 m
0.002129 -0.000785 0.999997 -2.1716 m
0.000000 0.000000 0.000000 1.0000
```

Result registration cloud to cloud standard deviation:5.8 mm

## Deviation histogram

Points



## Scan 'Bis. Ribita Sc.38'

Scanner 'Z+F IMAGER 5016' serial number '5016-0100' Firmware 9.0.3.6562-0

Scan resolution 'High' quality 'Normal'

**Metadata**    **Value**  
**comment**  
**operator**

```
Scan command: -crl "RCSense 9.0.3" -memorize 1 -file "Bis. Ribita Sc.38" -scanpos "38" -path "Biserica Ribita" -project "Biserica Ribita" -projectTemplate "" -compensator -cav -temperature "20" -camera "i-cam" -panoramaparams test -resolution h -quality default -ifrom "0" -to "101" -hfrom "20" -to "340"
Sensor
sensors: 3100 * barometer translation rotation gps*
Barometer: 0.984459 bar 242.49 m
nav translation: -13.6984 m -2.1646 m 242.6365 m accuracies: 12.1232 m 12.1232 m 0.0000 m
nav rotation: 0.0000 0.0000 211.0040 accuracies: 0.0000 0.0000 15.0000
upside-down: no
GPS lat:46.177879 long:22.764729 satellites:8 height:303.7m hdop:1.1 vdop:1.6m haacc:3.7m vacc:6.1 flags:G3 'stand alone 3D solution'
north:5115325.063 m east:636207.616 m zone:34T
Initial pre position (3:outdoor)
-0.857 -0.515 0.000 25.334
0.515 -0.857 0.000 -38.455
0.000 0.000 1.000 15.543
0.000 0.000 0.000 1.000
```

Level system info: dynamic compensator available.



# Scan position '39'

Scan position is member of group(s):

Status registration '[102h] registered with cloud to cloud'

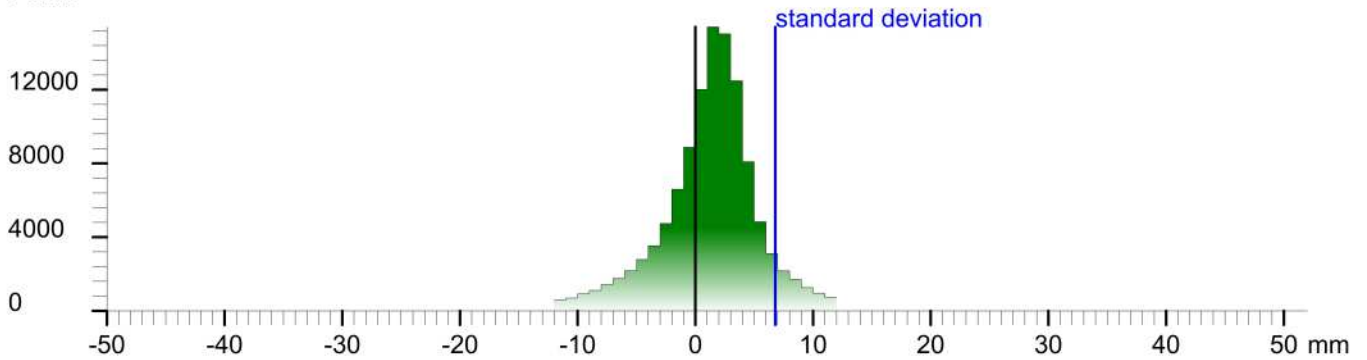
Registration matrix:

```
-0.957843  0.287290  0.001507  11.1721 m
-0.287292 -0.957841 -0.001980 -38.1252 m
0.000874  -0.002329  0.999997  -2.0767 m
0.000000  0.000000  0.000000  1.0000
```

Result registration cloud to cloud standard deviation:6.8 mm

## Deviation histogram

Points



## Scan 'Bis. Ribita Sc.39'

Scanner 'Z+F IMAGER 5016' serial number '5016-0100' Firmware 9.0.3.6562-0

Scan resolution 'High' quality 'Normal'

**Metadata**    **Value**  
**comment**  
**operator**

```
Scan command: -crl "RCSense 9.0.3" -memorize 1 -file "Bis. Ribita Sc.39" -screener "39" -path "Biserica Ribita" -project "Biserica Ribita" -projectTemplate "" -compensator -nav -temperature "20" -camera "i-cam" -panoramaparams test-resolution h-quality default -from "0" -to "101" -hfrom "20" -hro "340"
Sensor
sensors: 3100 " barometer translation rotation gps"
Barometer: 0.984298 bar 243.866 m
nav translation: -10.2735 m -7.7509 m 243.3445 m accuracies: 11.6291 m 11.6291 m 0.0000 m
nav rotation: 0.0000 0.0000 162.0711 accuracies: 0.0000 0.0000 15.0000
upside-down: no
GPS lat:46.177856 long:22.764568 satellites:7 height:302.2m hdop:1.4 vdop:1.6m haacc:4.2m vacc:6.0 flags:G3 'stand alone 3D solution'
north:5115322.245 m east:636195.307 m zone:34T
Initial pre position (3:outdoor)
-0.951 0.308 0.000 12.964
-0.308 -0.951 0.000 -41.287
0.000 0.000 1.000 16.251
0.000 0.000 0.000 1.000
```

Level system info: dynamic compensator available.



# Scan position '4'

Scan position is member of group(s):

Status registration '[102h] registered with cloud to cloud'

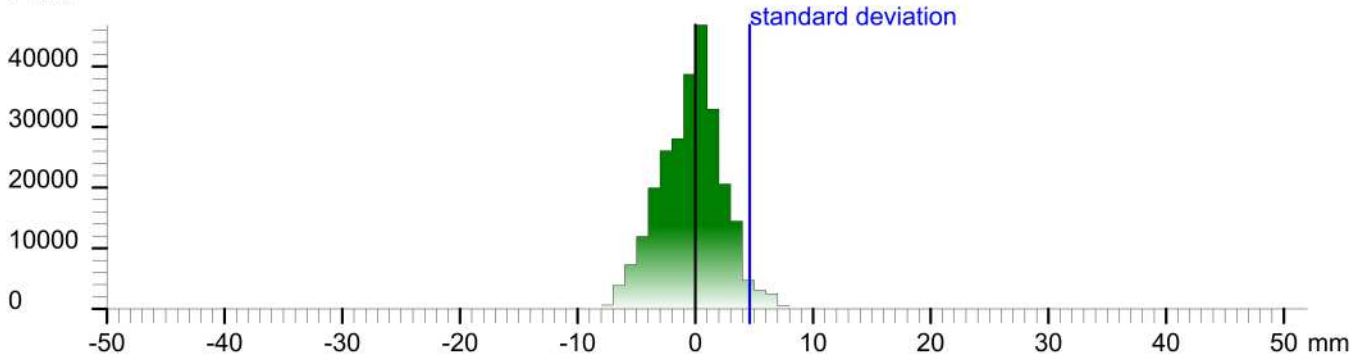
Registration matrix:

```
0.975925  0.218104  0.000888  13.7582 m
-0.218104  0.975926  0.000025  -9.7397 m
-0.000861 -0.000218  1.000000  -0.2690 m
0.000000  0.000000  0.000000  1.0000
```

Result registration cloud to cloud standard deviation:4.6 mm

## Deviation histogram

Points



## Scan 'Bis. Ribita Sc.3'

Scanner 'Z+F IMAGER 5016' serial number '5016-0100' Firmware 9.0.3.6562-0

Scan resolution 'High' quality 'Normal'

**Metadata**    **Value**  
**comment**  
**operator**

```
Scan command: -crl "Z+F IMAGER 5016" -memorize 1 -file "Bis. Ribita Sc.3" -scanpos "1" -path "Biserica Ribita" -project "Biserica Ribita" -projectTemplate "" -compensator -nav -temperature "20" -camera "zcam" -panoramaparams test-resolution h -quality default -from "0" -to "10" -hbm1 "20" -hbm1 "340"
Sensor
sensors: 3100 " barometer translation rotation gps"
Barometer: 0.986274 bar 227.037 m
nav translation: 2.7406 m -4.3398 m 226.7798 m accuracies: 7.7066 m 7.7066 m 0.0000 m
nav rotation: 0.0000 0.0000 14.1267 accuracies: 0.0000 0.0000 15.0000
upside-down: no
GPS lat:46.178123 long:22.764608 satellites:7 height:306.5m hdop:1.1 vdop:1.7m haacc:4.2m vacc:5.9 flags:G3 'stand alone 3D solution'
north:5115351.982 m east:636197.739 m zone:34T
Initial pre position (3:outdoor)
0.970 0.244 0.000 15.392
-0.244 0.970 0.000 -11.552
0.000 0.000 1.000 0.088
0.000 0.000 0.000 1.000
```

Level system info: dynamic compensator available.



# Scan position '40'

Scan position is member of group(s):

Status registration '[102h] registered with cloud to cloud'

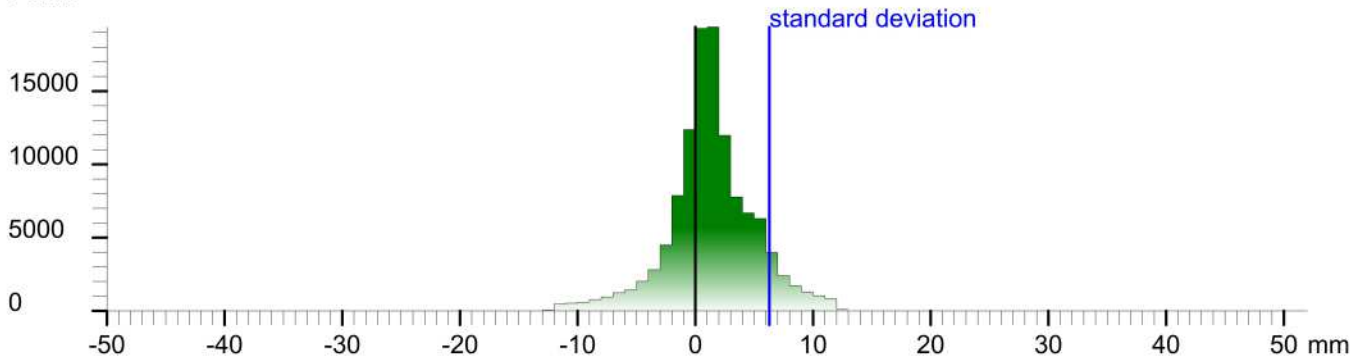
Registration matrix:

```
-0.608503 -0.793551 0.000997 10.8343 m
0.793550 -0.608504 -0.001563 -30.2864 m
0.001847 -0.000160 0.999998 -1.9526 m
0.000000 0.000000 0.000000 1.0000
```

Result registration cloud to cloud standard deviation:6.3 mm

## Deviation histogram

Points



## Scan 'Bis. Ribita Sc.40'

Scanner 'Z+F IMAGER 5016' serial number '5016-0100' Firmware 9.0.3.6562-0

Scan resolution 'High' quality 'Normal'

**Metadata**    **Value**  
**comment**  
**operator**

```
Scan command: -cli "Z+FSense 9.0.3" -memorize 1 -file "Bis. Ribita Sc.40" -scanpos "40" -path "Biserica Ribita" -project "Biserica Ribita" -projectTemplate "" -compensator -nav -temperature "20" -camera "i-cam" -panoramaparams test -resolution h -quality default -from "0" -to "101" -hfrom "20" -hro "340"
```

Sensor  
sensors: 3100 \* barometer translation rotation gps\*  
Barometer: 0.984140 bar 245.208 m  
nav translation: -6.2534 m 3.5432 m 244.4740 m accuracies: 8.7368 m 8.7368 m 0.0000 m  
nav rotation: 0.0000 0.0000 228.1445 accuracies: 0.0000 0.0000 15.0000  
upside-down: no  
GPS lat:46.177944 long:22.764565 satellites:8 height:302.8m hdop:1.4 vdop:1.4m haacc:4.1m vacc:4.7 flags:G3 'stand alone 3D solution'  
north:5115331.986 m east:636194.796 m zone:34T  
Initial pre position (3:outdoor)  
-0.667 -0.745 0.000 12.515  
0.745 -0.667 0.000 -31.514  
0.000 0.000 1.000 17.381  
0.000 0.000 0.000 1.000

Level system info: dynamic compensator available.





# Scan position '41'

Scan position is member of group(s):

Status registration '[102h] registered with cloud to cloud'

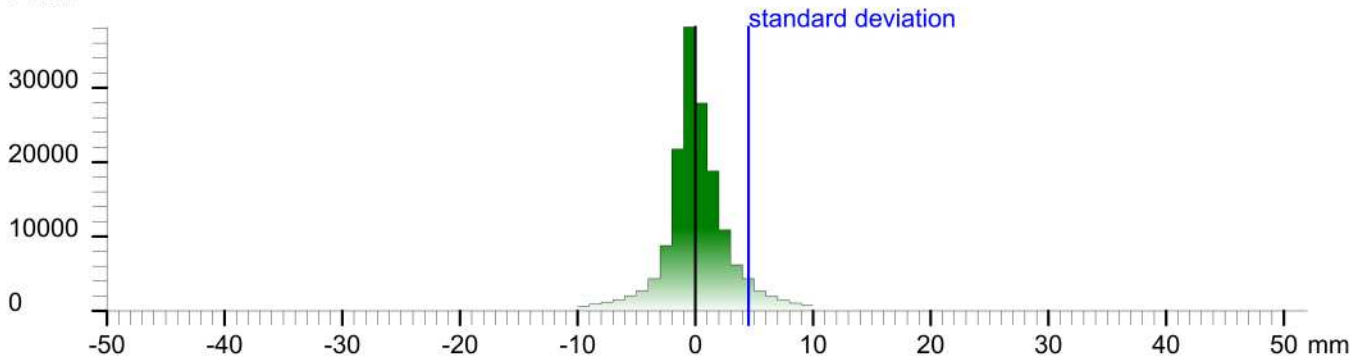
Registration matrix:

```
-0.725466 -0.688258 0.000576 17.6570 m
0.688256 -0.725466 -0.001791 -26.6298 m
0.001651 -0.000903 0.999998 -1.8746 m
0.000000 0.000000 0.000000 1.0000
```

Result registration cloud to cloud standard deviation:4.5 mm

## Deviation histogram

Points



## Scan 'Bis. Ribita Sc.41'

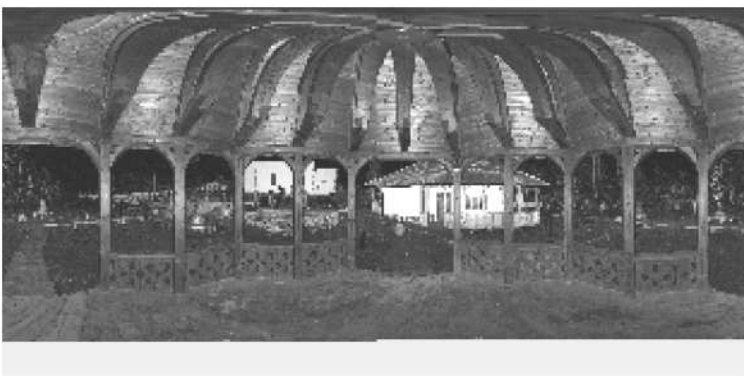
Scanner 'Z+F IMAGER 5016' serial number '5016-0100' Firmware 9.0.3.6562-0

Scan resolution 'High' quality 'Normal'

**Metadata**    **Value**  
**comment**  
**operator**

```
Scan command: -crl "Z+F IMAGER 9.0.3" -memorize 1 -file "Bis. Ribita Sc.41" -scanset "41" -path "Biserica Ribita" -project "Biserica Ribita" -projectTemplate "" -compensator -cav -temperature "20" -camera "i-cam" -panoramasphere -test -resolution h -quality default -ifrom "0" -to "101" -hfrom "20" -to "340"
Sensor
sensors: 3100 " barometer translation rotation gps"
Barometer: 0.984227 bar 244.463 m
nav translation: -13.7318 m 0.8776 m 244.4892 m accuracies: 11.9871 m 11.9871 m 0.0000 m
nav rotation: 0.0000 0.0000 219.6066 accuracies: 0.0000 0.0000 15.0000
upside-down: no
GPS lat:46.178005 long:22.764692 satellites:3 height:289.1m hdop:2.7 vdop:1.0m hacc:18.0m vacc:24.0 flags:G2 'stand alone 2D solution'
north:5115338.987 m east:636204.508 m zone:34T
Initial pre position (0:indoor)
-0.770 -0.638 0.000 -1.217
0.638 -0.770 0.000 -30.637
0.000 0.000 1.000 17.396
0.000 0.000 0.000 1.000
```

Level system info: dynamic compensator available.





# Scan position '42'

Scan position is member of group(s):

Status registration '[102h] registered with cloud to cloud'

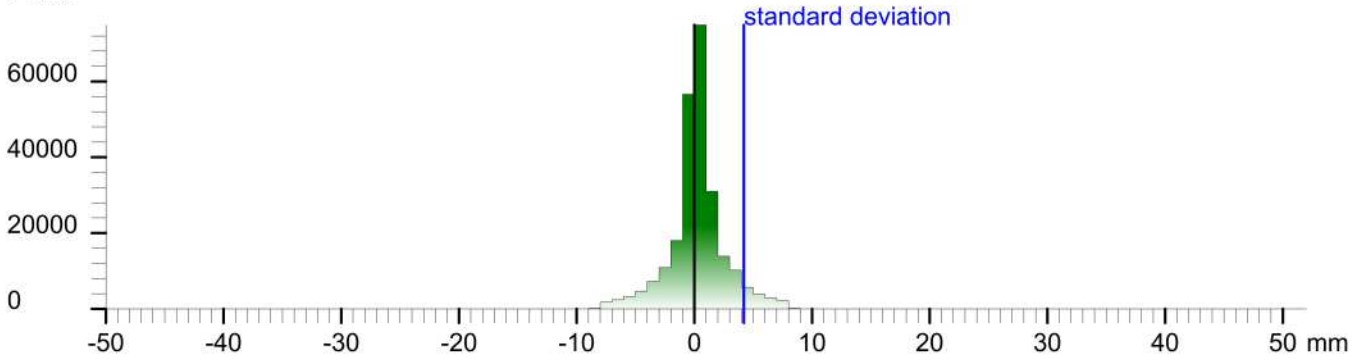
Registration matrix:

```
0.635334 -0.772237 0.000525 24.1214 m
0.772238 0.635334 -0.000712 -16.1598 m
0.000216 0.000858 1.000000 -1.2961 m
0.000000 0.000000 0.000000 1.0000
```

Result registration cloud to cloud standard deviation:4.2 mm

## Deviation histogram

Points



## Scan 'Bis. Ribita Sc.42'

Scanner 'Z+F IMAGER 5016' serial number '5016-0100' Firmware 9.0.3.6562-0

Scan resolution 'High' quality 'Normal'

**Metadata**    **Value**  
**comment**  
**operator**

Scan command: -crl "RCServer 9.0.3" -memorize 1 -file "Bis\_Ribita Sc.42" -scanset "42" -path "Biserica Ribita" -project "Biserica Ribita" -projectTemplate "" -compensator -cav -temperature "20" -camera "i-cam" -panoramaparams test-resolution h-quality default -from "0" -to "101" -hfrom "20" -hro "340"

Sensor  
sensors: 3100 'barometer translation rotation gps'  
Barometer: 0.964094 bar 245.603 m  
nav translation: -5.8029 m 15.8350 m 245.0805 m accuracies: 13.6105 m 13.6105 m 0.0000 m  
nav rotation: 0.0000 0.0000 310.4682 accuracies: 0.0000 0.0000 15.0000  
upside-down: no  
GPS lat:46.178078 long:22.764750 satellites:10 height:304.6m hdop:0.9 vdop:1.0m hacc:4.0m vacc:4.4 flags:G3 'stand alone 3D solution'  
north:5115347.138 m east:636208.746 m zone:34T  
Initial pre position (3:outdoor)  
0.649 -0.761 0.000 26.463  
0.761 0.649 0.000 -16.309  
0.000 0.000 1.000 17.987  
0.000 0.000 0.000 1.000

Level system info: dynamic compensator available.



# Scan position '43'

Scan position is member of group(s):

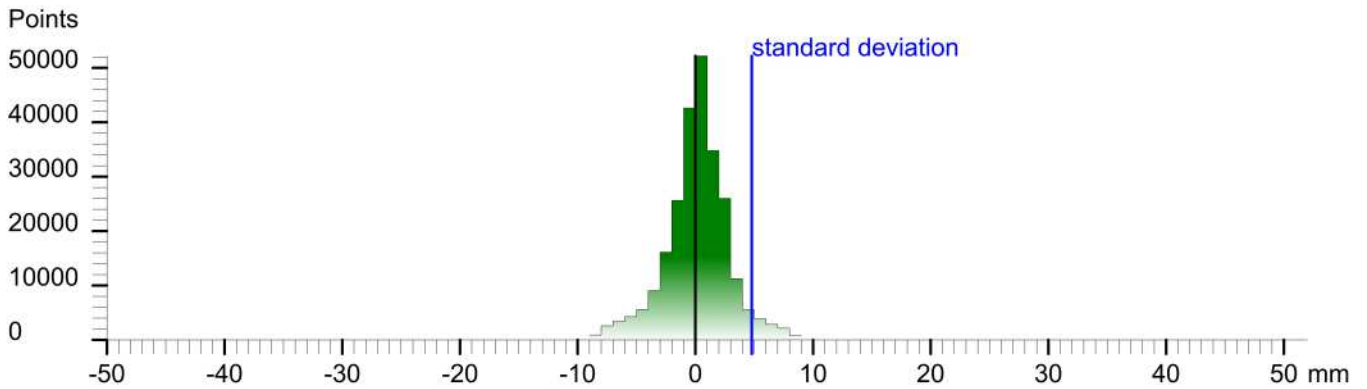
Status registration '[102h] registered with cloud to cloud'

Registration matrix:

```
0.635666 -0.771964 0.000946 24.1219 m
0.771964 0.635664 -0.001853 -16.1600 m
0.000829 0.001908 0.999998 -1.2959 m
0.000000 0.000000 0.000000 1.0000
```

Result registration cloud to cloud standard deviation:4.8 mm

## Deviation histogram



## Scan 'Bis. Ribita Sc.43'

Scanner 'Z+F IMAGER 5016' serial number '5016-0100' Firmware 9.0.3.6562-0

Scan resolution 'High' quality 'Normal'

**Metadata**    **Value**  
**comment**  
**operator**

```
Scan command: -cli "Z+F IMAGER 9.0.3" -memorize 1 -file "Bis. Ribita Sc.43" -script "43" -path "Biserica Ribita" -project "Biserica Ribita" -projectTemplate "" -compensator -nav -temperature "20" -camera "i-cam" -panoramasparams test -resolution h -quality default -from "0" -to "101" -hfrom "20" -hno "340"
```

Sensor  
sensors: 3100 " barometer translation rotation gps"  
Barometer: 0.984125 bar 245.338 m  
nav translation: 0.0000 m 0.0000 m 245.0805 m accuracies: 5.1000 m 5.1000 m 0.0000 m  
nav rotation: 0.0000 0.0000 313.3474 accuracies: 0.0000 0.0000 15.0000  
upside-down: no  
GPS lat:46.178074 long:22.764740 satellites:7 height:303.1m hdop:1.9 vdop:1.6m haacc:4.9m vacc:5.3 flags:G3 'stand alone 3D solution'  
north:5115346.698 m east:636206.019 m zone:34T  
Initial pre position (3:outdoor)  
0.686 -0.727 0.000 25.701  
0.727 0.686 0.000 -16.770  
0.000 0.000 1.000 17.987  
0.000 0.000 0.000 1.000

Level system info: dynamic compensator available.



# Scan position '44'

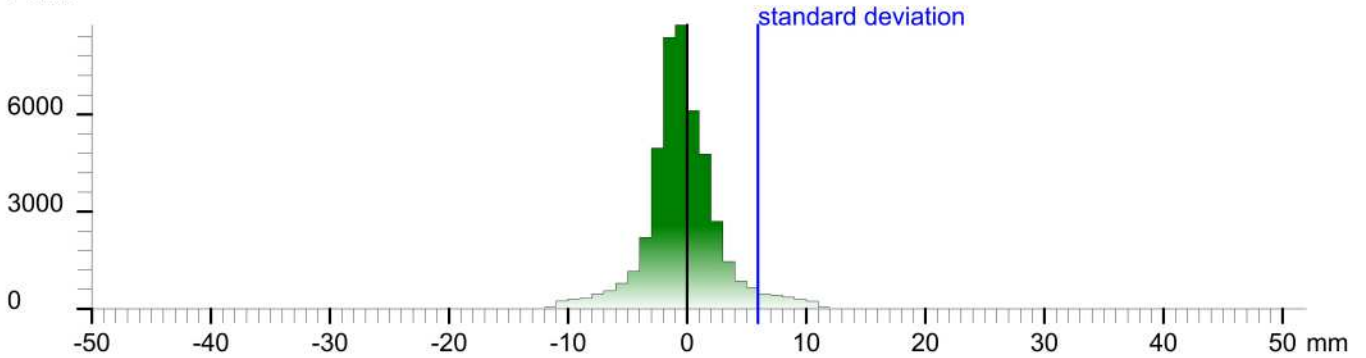
Scan position is member of group(s):  
Status registration '[102h] registered with cloud to cloud'  
Registration matrix:

0.965898	-0.258918	0.001429	37.0928 m
0.258919	0.965899	-0.000452	-17.0502 m
-0.001263	0.000807	0.999999	-2.0399 m
0.000000	0.000000	0.000000	1.0000

Result registration cloud to cloud standard deviation:5.9 mm

## Deviation histogram

Points



## Scan 'Bis. Ribita Sc.44'

Scanner 'Z+F IMAGER 5016' serial number '5016-0100' Firmware 9.0.3.6562-0  
Scan resolution 'High' quality 'Normal'

Metadata	Value
comment	
operator	

```
Scan command: -crl "Z+F IMAGER 5016" -memorize 1 -file "Bis. Ribita Sc.44" -screep "44" -path "Biserica Ribita" -project "Biserica Ribita" -projectTemplate "" -compensator -cav -temperature "20" -camera "i-cam" -panoramaparams test -resolution h -quality default -ifrom "0" -to "101" -hfrom "20" -hro "340"
```

Sensor  
sensors: 3100 " barometer translation rotation gps"  
Barometer: 0.984253 bar 244.243 m  
nav translation: 16.7233 m 5.9648 m 244.2673 m accuracies: 14.9776 m 14.9776 m 0.0000 m  
nav rotation: 0.0000 0.0000 341.4370 accuracies: 0.0000 0.0000 15.0000  
upside-down: no  
GPS lat:46.178028 long:22.764935 satellites:5 height:299.3m hdop:1.9 vdop:2.0m hacc:17.0m vacc:13.0 flags:G3 'stand alone 3D solution'  
north:5115341.946 m east:636223.148 m zone:34T  
Initial pre position (3:outdoor)  
0.948 -0.318 0.000 40.865  
0.318 0.948 0.000 -21.547  
0.000 0.000 1.000 17.174  
0.000 0.000 0.000 1.000

Level system info: dynamic compensator available.



# Scan position '45'

Scan position is member of group(s):

Status registration '[102h] registered with cloud to cloud'

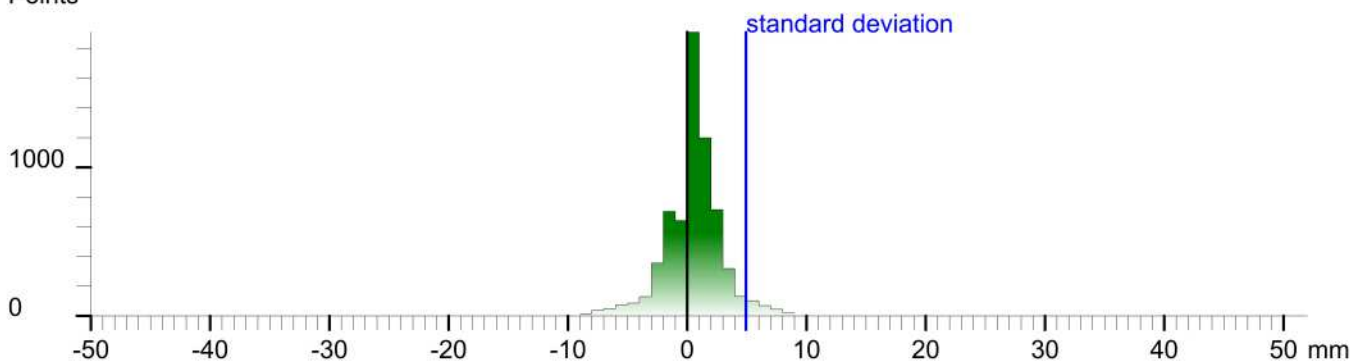
Registration matrix:

```
0.999991 -0.004074 0.001452 39.1397 m
0.004076 0.999991 -0.000864 -17.2956 m
-0.001449 0.000869 0.999999 -2.1053 m
0.000000 0.000000 0.000000 1.0000
```

Result registration cloud to cloud standard deviation:4.9 mm

## Deviation histogram

Points



## Scan 'Bis. Ribita Sc.45'

Scanner 'Z+F IMAGER 5016' serial number '5016-0100' Firmware 9.0.3.6562-0

Scan resolution 'High' quality 'Normal'

**Metadata**    **Value**  
**comment**  
**operator**

```
Scan command: -cli "Z+F IMAGER 9.0.3" -memorize 1 -file "Bis. Ribita Sc.45" -scanpos "45" -path "Biserica Ribita" -project "Biserica Ribita" -projectTemplate "" -compensator -nav -temperature "20" -camera "i-cam" -panoramaparams test -resolution h -quality default -ifrom "0" -to "101" -hfrom "20" -to "1" "340"
Sensor
sensors: 3100 " barometer translation rotation gps"
Barometer: 0.984266 bar 244.134 m
nav translation: 2.0557 m 1.3059 m 244.0928 m accuracies: 6.3315 m 6.3315 m 0.0000 m
nav rotation: 0.0000 0.0000 3.1311 accuracies: 0.0000 0.0000 173.4053
upside-down: no
GPS lat:46.178043 long:22.764929 satellites:8 height:304.5m hdop:1.5 vdop:2.1m haacc:5.1m vacc:6.1 flags:G3 'stand alone 3D solution'
north:5115343.631 m east:636222.669 m zone:34T
Initial pre position (3:outdoor)
0.999 0.055 0.000 40.365
-0.055 0.999 0.000 -19.890
0.000 0.000 1.000 16.999
0.000 0.000 0.000 1.000
```

Level system info: dynamic compensator available.





# Scan position '46'

Scan position is member of group(s):

Status registration '[102h] registered with cloud to cloud'

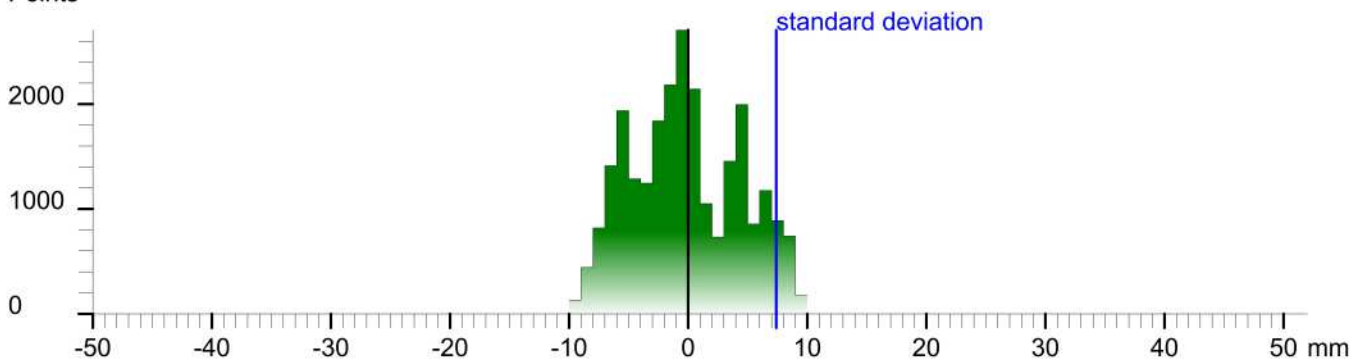
Registration matrix:

```
-0.581093 -0.813837 0.001086 47.2965 m
0.813837 -0.581094 -0.000272 14.6293 m
0.000852 0.000726 0.999999 -2.1260 m
0.000000 0.000000 0.000000 1.0000
```

Result registration cloud to cloud standard deviation:7.4 mm

## Deviation histogram

Points



## Scan 'Bis. Ribita Sc.46'

Scanner 'Z+F IMAGER 5016' serial number '5016-0100' Firmware 9.0.3.6562-0

Scan resolution 'High' quality 'Normal'

**Metadata**    **Value**  
**comment**  
**operator**

```
Scan command: -crl "Z+F IMAGER 9.0.3" -memorize 1 -file "Bis. Ribita Sc.46" -scanset "46" -path "Biserica Ribita" -project "Biserica Ribita" -projectTemplate "" -compensator -nav -temperature "20" -camera "i-cam" -panoramaparams test -resolution h -quality default -ifrom "0" -to "101" -hfrom "20" -hro "340"
Sensor
sensors: 3100 " barometer translation rotation gps"
Barometer: 0.984284 bar 243.979 m
nav translation: 0.0000 m 0.0000 m 243.8801 m accuracies: 5.1000 m 5.1000 m 0.0001 m
nav rotation: 0.0000 0.0000 230.0356 accuracies: 0.0000 0.0000 15.0000
upside-down: no
GPS lat:46.178333 long:22.765043 satellites:9 height:303.8m hdop:1.1 vdop:1.4m haacc:4.4m vacc:5.5 flags:G3 'stand alone 3D solution'
north:5115376.040 m east:636230.785 m zone:34T
Initial pre position (3:outdoor)
-0.642 -0.766 0.000 48.447
0.766 -0.642 0.000 12.527
0.000 0.000 1.000 16.787
0.000 0.000 0.000 1.000
```

Level system info: dynamic compensator available.





# Scan position '47'

Scan position is member of group(s):

Status registration '[102h] registered with cloud to cloud'

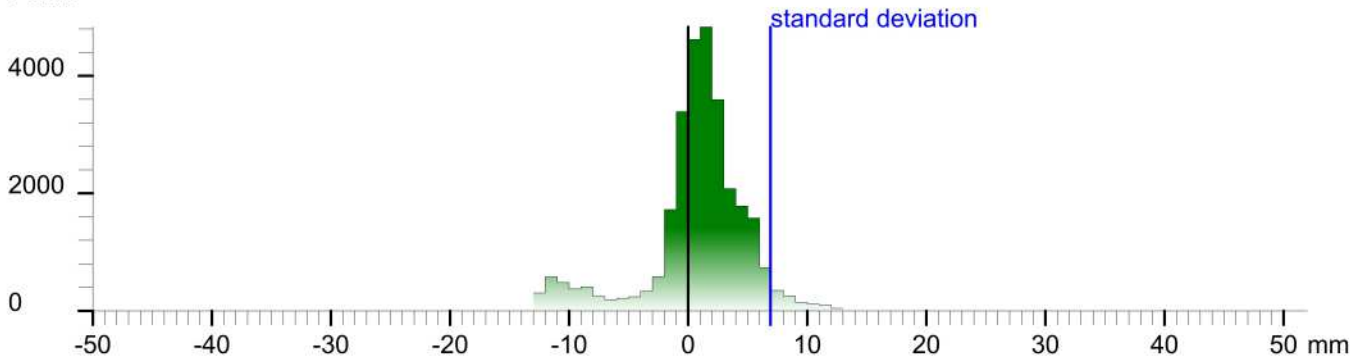
Registration matrix:

```
-0.993888 -0.110380 0.001417 36.9844 m
0.110379 -0.993889 -0.001036 35.9566 m
0.001523 -0.000874 0.999998 -1.9562 m
0.000000 0.000000 0.000000 1.0000
```

Result registration cloud to cloud standard deviation:6.9 mm

## Deviation histogram

Points



## Scan 'Bis. Ribita Sc.47'

Scanner 'Z+F IMAGER 5016' serial number '5016-0100' Firmware 9.0.3.6562-0

Scan resolution 'High' quality 'Normal'

**Metadata**    **Value**  
**comment**  
**operator**

```
Scan command: -crl "Z+F IMAGER 9.0.3" -memorize 1 -file "Bis. Ribita Sc.47" -scanpos "47" -path "Biserica Ribita" -project "Biserica Ribita" -projectTemplate "" -compensator -cav -temperature "20" -camera "i-cam" -panoramaparams test -resolution h -quality default -ifrom "0" -to "101" -hfrom "20" -hro "340"
```

Sensor  
sensors: 3100 \* barometer translation rotation gps\*  
Barometer: 0.984262 bar 244.169 m  
nav translation: -22.9426 m 22.6740 m 244.6734 m accuracies: 21.4218 m 21.4218 m 0.0000 m  
nav rotation: 0.0000 0.0000 182.0436 accuracies: 0.0000 0.0000 15.0000  
upside-down: no  
GPS lat:46.178535 long:22.764929 satellites:8 height:303.6m hdop:1.5 vdop:2.0m haacc:5.1m vacc:6.4 flags:G3 'stand alone 3D solution'  
north:5115398.307 m east:636221.453 m zone:34T  
Initial pre position (3:outdoor)  
-0.999 -0.036 0.000 39.150  
0.036 -0.999 0.000 34.775  
0.000 0.000 1.000 17.480  
0.000 0.000 0.000 1.000

Level system info: dynamic compensator available.



# Scan position '48'

Scan position is member of group(s):

Status registration '[102h] registered with cloud to cloud'

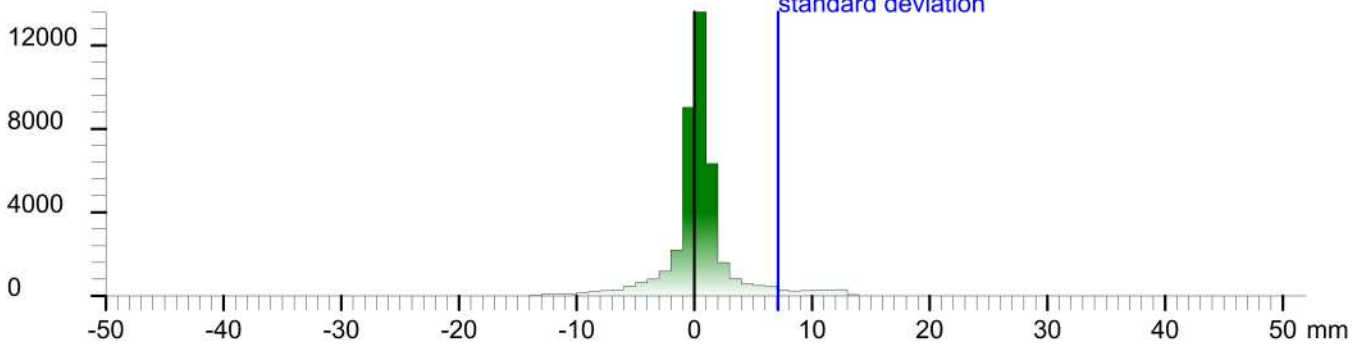
Registration matrix:

```
-0.217622 -0.976034 0.000122 0.8869 m
0.976033 -0.217622 -0.000012 23.0086 m
0.000039 0.000116 1.000000 2.2004 m
0.000000 0.000000 0.000000 1.0000
```

Result registration cloud to cloud standard deviation: 7.1 mm

## Deviation histogram

Points



## Scan 'Bis. Ribita Sc.48'

Scanner 'Z+F IMAGER 5016' serial number '5016-0100' Firmware 9.0.3.6562-0

Scan resolution 'High' quality 'Normal'

**Metadata**    **Value**  
**comment**  
**operator**

```
Scan command: -cli "Z+F IMAGER 9.0.3" -memorize 1 -file "Bis. Ribita Sc.48" -script "48" -path "Biserica Ribita" -project "Biserica Ribita" -projectTemplate "" -compensator -nav -temperature "20" -camera "i-cam" -panoramaparams test-resolution h-quality default -from "0" -to "101" -hfrom "20" -hto "340"
Sensor
sensors: 3100 " barometer translation rotation gps"
Barometer: 0.983880 bar 247.424 m
nav translation: -48.0770 m -3.8945 m 247.3151 m accuracies: 29.7261 m 29.7261 m 0.0001 m
nav rotation: 0.0000 0.0000 254.0196 accuracies: 0.0000 0.0000 15.0000
upside-down: no
GPS lat:46.178421 long:22.764437 satellites:10 height:308.1m hdop:1.0 vdop:1.4m hacc:4.6m vacc:5.3 flags:G3'stand alone 3D solution'
north:5115384.748 m east:636183.755 m zone:34T
Initial pre position (3:outdoor)
-0.275 -0.961 0.000 1.458
0.961 -0.275 0.000 21.265
0.000 0.000 1.000 20.222
0.000 0.000 0.000 1.000
```

Level system info: dynamic compensator available.



# Scan position '49'

Scan position is member of group(s):

Status registration '[122h] preregistered with cloud to cloud'

Registration matrix:

0.849054	-0.528307	0.000336	-26.0278 m
0.528308	0.849054	0.000128	5.3170 m
-0.000353	0.000068	1.000000	-0.4332 m
0.000000	0.000000	0.000000	1.0000

## Scan 'Bis. Ribita Sc.49'

Scanner 'Z+F IMAGER 5016' serial number '5016-0100' Firmware 9.0.3.6562-0

Scan resolution 'High' quality 'Normal'

**Metadata**    **Value**  
**comment**  
**operator**

Scan command: -crl "LRCServer 9.0.3" -memorize 1 -file "Bis. Ribita Sc.49" -scans "49" -path "Biserica Ribita" -project "Biserica Ribita" -projectTemplate "" -compensator -nav -temperature "20" -camera "1-cam" -panoramaparams test -resolution h -quality default -ifrom "0" -to "181" -ifrom1 "20" -to1 "340"

Sensor  
sensors: 3100 ' barometer translation rotation gps'  
Barometer: 0.984193 bar 244.76 m  
nav translation: -25.5639 m -27.0358 m 244.8580 m accuracies: 23.9767 m 23.9767 m 0.0001 m  
nav rotation: 0.0000 0.0000 330.9432 accuracies: 0.0000 0.0000 15.0000  
upside-down: no  
GPS lat:46.178272 long:22.764099 satellites:9 height:304.5m hdop:1.2 vdop:1.5m hacc:4.0m vacc:4.9 flags:G3 'stand alone 3D solution'  
north:5115367.639 m east:636158.066 m zone:34T  
Initial pre position (3:outdoor)  
0.874 -0.486 0.000 -24.262  
0.486 0.874 0.000 4.130  
0.000 0.000 1.000 17.765  
0.000 0.000 0.000 1.000

Level system info: dynamic compensator available.



# Scan position '5'

Scan position is member of group(s):

Status registration '[10123h] preregistered with cloud to cloud, manually'

Registration matrix:

-0.363344	-0.931655	0.000483	21.0048 m
0.931654	-0.363345	-0.001174	-12.0199 m
0.001269	0.000023	0.999999	-0.6214 m
0.000000	0.000000	0.000000	1.0000

## Scan 'Bis. Ribita Sc.4'

Scanner 'Z+F IMAGER 5016' serial number '5016-0100' Firmware 9.0.3.6562-0

Scan resolution 'High' quality 'Normal'

Metadata	Value
comment	
operator	

Scan command: `cd /usr/local/bin; ./rcserver 9.0.3 -memorize 1 -file "Bis. Ribita Sc.4" -scanpos "0" -path "Biserica Ribita" -project "Biserica Ribita" -projectTemplate "" -compensator nav -temperature "20" -camera "1-cam" -panoramaparams fast-resolution h -quality default -fhoriz "0" -fo "181" -fhoriz "20" -fhoriz "340"`

### Sensor

sensors: 3100 ' barometer translation rotation gps'  
Barometer: 0.986268 bar 227.089 m  
nav translation: 7.4280 m 6.1103 m 226.2792 m accuracies: 9.9307 m 9.9307 m 0.0001 m  
nav rotation: 0.0000 0.0000 249.1644 accuracies: 0.0000 0.0000 15.0000  
upside-down: no  
GPS lat:46.178097 long:22.764708 satellites:7 height:308.0m hdop:1.4 vdop:2.1m hacc:6.3m vacc:11.0 flags:G3 'stand alone 3D solution'  
north:5115349.186 m east:636205.460 m zone:34T  
Initial pre position (3:outdoor)  
-0.356 -0.935 0.000 23.174  
0.935 -0.356 0.000 -14.270  
0.000 0.000 1.000 -0.413  
0.000 0.000 0.000 1.000

Level system info: dynamic compensator available.



# Scan position '50'

Scan position is member of group(s):

Status registration '[102h] registered with cloud to cloud'

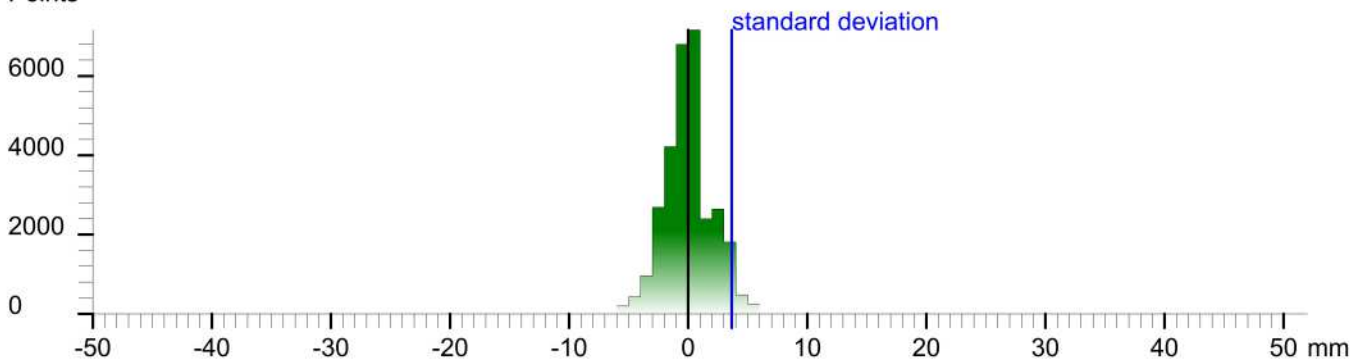
Registration matrix:

```
-0.507293  0.861771  0.001943  34.6843 m
-0.861773 -0.507290 -0.001966 -22.8557 m
-0.000709 -0.002672  0.999996  -2.0057 m
0.000000  0.000000  0.000000  1.0000
```

Result registration cloud to cloud standard deviation:3.7 mm

## Deviation histogram

Points



## Scan 'Bis. Ribita Sc.50'

Scanner 'Z+F IMAGER 5016' serial number '5016-0100' Firmware 9.0.3.6562-0

Scan resolution 'High' quality 'Normal'

**Metadata**    **Value**  
**comment**  
**operator**

```
Scan command: -cli "ZFCScanner 9.0.3" -memorize 1 -file "Bis. Ribita Sc.50" -scanarea "50" -path "Biserica Ribita" -project "Biserica Ribita" -projectTemplate "" -compensator -nav -temperature "20" -camera "i-cam" -panoramasparams test -resolution h -quality default -ifrom "0" -to "101" -hfrom "20" -hto "340"
```

```
Sensor  
sensors: 3096 ' barometer translation rotation'  
Barometer: 0.984422 bar 242.804 m  
nav translation: 43.1898 m -58.9064 m 242.6328 m accuracies: 41.8731 m 41.8731 m 0.0000 m  
nav rotation: 0.0000 0.0000 107.5234 accuracies: 0.0000 0.0000 15.0000  
upside-down: no  
Initial pre position (0:indoor)  
-0.301 0.954 0.000 18.928  
-0.954 -0.301 0.000 -54.777  
0.000 0.000 1.000 15.539  
0.000 0.000 0.000 1.000
```

Level system info: dynamic compensator available.





# Scan position '51'

Scan position is member of group(s):

Status registration '[102h] registered with cloud to cloud'

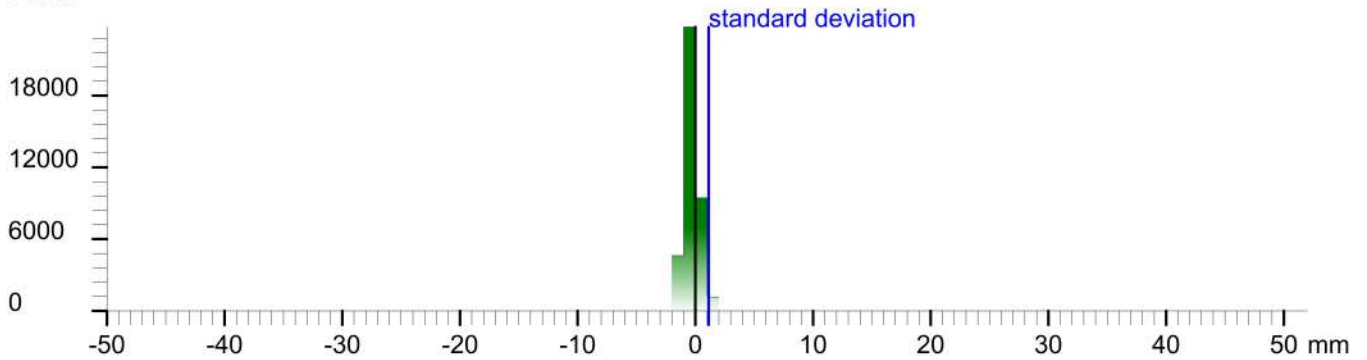
Registration matrix:

-0.600566	0.799573	0.002003	34.5285 m
-0.799575	-0.600563	-0.001685	-24.5771 m
-0.000145	-0.002613	0.999996	-2.0111 m
0.000000	0.000000	0.000000	1.0000

Result registration cloud to cloud standard deviation: 1.1 mm

## Deviation histogram

Points



## Scan 'Bis. Ribita Sc.51'

Scanner 'Z+F IMAGER 5016' serial number '5016-0100' Firmware 9.0.3.6562-0

Scan resolution 'High' quality 'Normal'

Metadata	Value
comment	
operator	

Scan command: `cd /home/.../RCSEnser 9.0.3/ -memorize 1 -file "Bis. Ribita Sc.51" -scanpos "51" -path "Biserica Ribita" -project "Biserica Ribita" -projectTemplate "" -compensator -nav -temperature "20" -camera "i-cam" -panoramaparams test -resolution h -quality default -ifrom "0" -to "101" -hfrom "20" -to "340"`

Sensor  
sensors: 3096 'barometer translation rotation'  
Barometer: 0.984516 bar 242.003 m  
nav translation: 0.3153 m -1.9952 m 241.9726 m accuracies: 6.1413 m 6.1413 m 0.0000 m  
nav rotation: 0.0000 0.0000 129.4611 accuracies: 0.0000 0.0000 15.0000  
upside-down: no  
Initial pre position (0:indoor)  
-0.636 0.772 0.000 19.243  
-0.772 -0.636 0.000 -56.772  
0.000 0.000 1.000 14.879  
0.000 0.000 0.000 1.000

Level system info: dynamic compensator available.



# Scan position '52'

Scan position is member of group(s):

Status registration '[102h] registered with cloud to cloud'

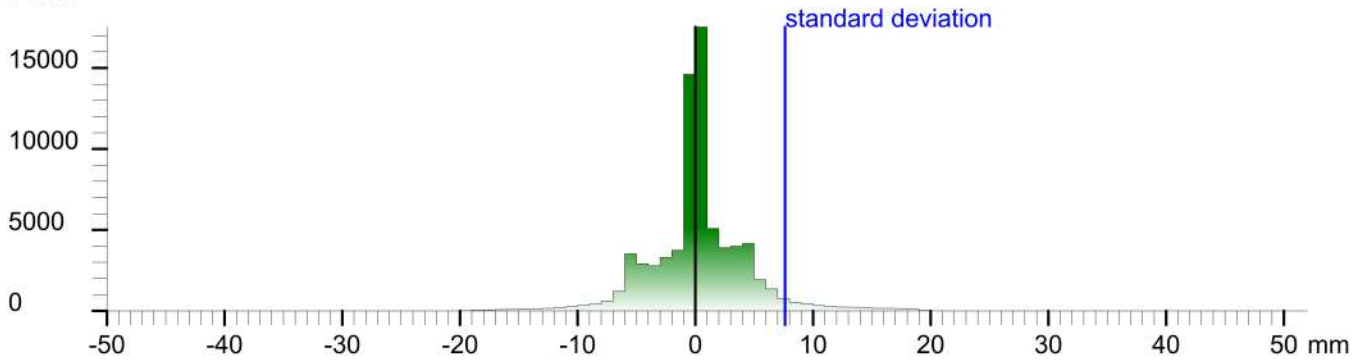
Registration matrix:

```
-0.527714  0.849421  0.001458  29.1481 m
-0.849423 -0.527713 -0.000882 -19.0717 m
0.000020 -0.001704  0.999998  -1.5196 m
0.000000  0.000000  0.000000  1.0000
```

Result registration cloud to cloud standard deviation: 7.6 mm

## Deviation histogram

Points



## Scan 'Bis. Ribita Sc.52'

Scanner 'Z+F IMAGER 5016' serial number '5016-0100' Firmware 9.0.3.6562-0

Scan resolution 'High' quality 'Normal'

**Metadata**    **Value**  
**comment**  
**operator**

```
Scan command: -cli "ZFSense 9.0.3" -memorize 1 -file "Bis_Ribita Sc.52" -scanset "52" -path "Biserica Ribita" -project "Biserica Ribita" -projectTemplate "" -compensator -nav -temperature "20" -camera "i-cam" -panoramaparams test -resolution h -quality default -from "0" -to "101" -hfrom "20" -hro "340"
```

```
Sensor  
sensors: 3096 'barometer translation rotation'  
Barometer: 0.984481 bar 242.3 m  
nav translation: -5.0722 m -1.2964 m 242.4756 m accuracies: 7.7627 m 7.7627 m 0.0002 m  
nav rotation: 0.0000 0.0000 104.6327 accuracies: 0.0000 0.0000 15.0000  
upside-down: no  
Initial pre position (0:indoor)  
-0.253 0.968 0.000 14.171  
-0.968 -0.253 0.000 -58.068  
0.000 0.000 1.000 15.382  
0.000 0.000 0.000 1.000
```

Level system info: dynamic compensator available.



# Scan position '53'

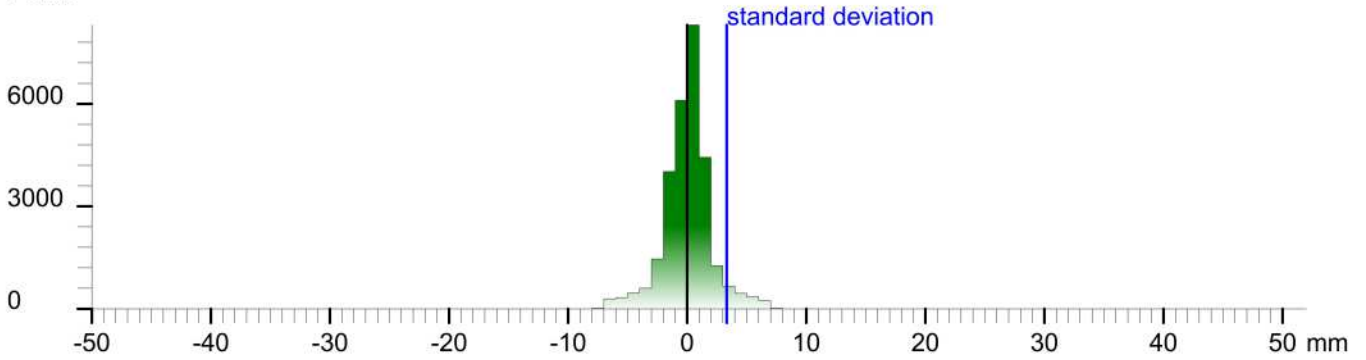
Scan position is member of group(s):  
Status registration '[102h] registered with cloud to cloud'  
Registration matrix:

0.975159	-0.221501	0.001545	34.6218 m
0.221503	0.975160	-0.000880	-30.1806 m
-0.001312	0.001200	0.999998	-2.0165 m
0.000000	0.000000	0.000000	1.0000

Result registration cloud to cloud standard deviation:3.3 mm

## Deviation histogram

Points



## Scan 'Bis. Ribita Sc.53'

Scanner 'Z+F IMAGER 5016' serial number '5016-0100' Firmware 9.0.3.6562-0  
Scan resolution 'High' quality 'Normal'

Metadata	Value
comment	
operator	

Scan command: `cd /home/.../RCScanner 9.0.3/ -memorize 1 -file "Bis. Ribita Sc.53" -scanarea "53" -path "Biserica Ribita" -project "Biserica Ribita" -projectTemplate "" -compensator -nav -temperature "20" -camera "i-cam" -panoramaparams test -resolution h -quality default -from "0" -to "101" -hfrom "20" -hto "340"`

Sensor  
sensors: 3096 ' barometer translation rotation'  
Barometer: 0.984536 bar 241.838 m  
nav translation: 8.6849 m -1.9549 m 241.6313 m accuracies: 9.7568 m 9.7568 m 0.0000 m  
nav rotation: 0.0000 0.0000 351.5686 accuracies: 0.0000 0.0000 15.0000  
upside-down: no  
Initial pre position (0:indoor)  
0.989 -0.147 0.000 22.856  
0.147 0.989 0.000 -60.023  
0.000 0.000 1.000 14.538  
0.000 0.000 0.000 1.000

Level system info: dynamic compensator available.



# Scan position '54'

Scan position is member of group(s):

Status registration '[102h] registered with cloud to cloud'

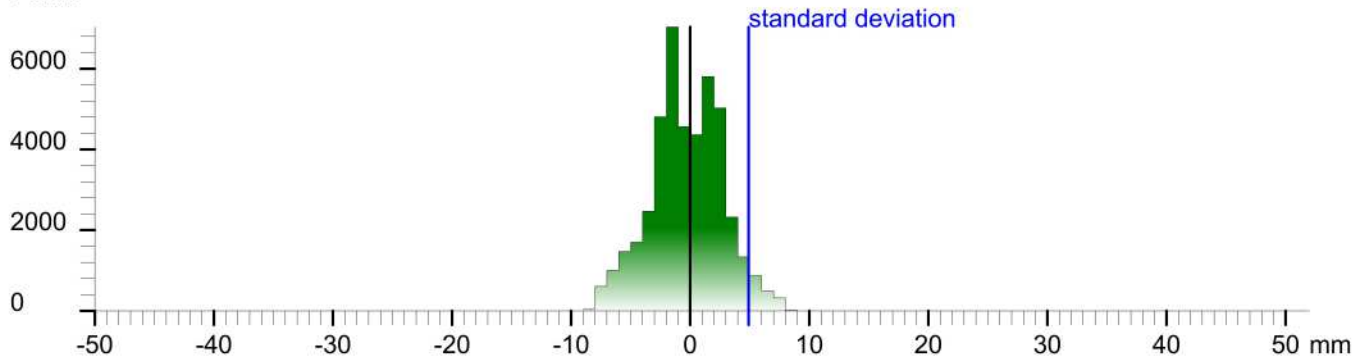
Registration matrix:

```
-0.991186 -0.132473 0.001574 25.8595 m
0.132469 -0.991185 -0.002196 -29.7570 m
0.001851 -0.001968 0.999996 -1.9921 m
0.000000 0.000000 0.000000 1.0000
```

Result registration cloud to cloud standard deviation:4.9 mm

## Deviation histogram

Points



## Scan 'Bis. Ribita Sc.54'

Scanner 'Z+F IMAGER 5016' serial number '5016-0100' Firmware 9.0.3.6562-0

Scan resolution 'High' quality 'Normal'

**Metadata**    **Value**  
**comment**  
**operator**

```
Scan command: -crl "Z+F IMAGER 9.0.3" -memorize 1 -file "Bis. Ribita Sc.54" -script "54" -path "Biserica Ribita" -project "Biserica Ribita" -projectTemplate "" -compensator -nav -temperature "20" -camera "i-cam" -panoramaparams test-resolution h-quality default -from "0" -to "101" -hfrom "20" -hro "340"
```

Sensor  
sensors: 3100 \* barometer translation rotation gps\*  
Barometer: 0.984441 bar 242.641 m  
nav translation: -9.1570 m -4.0993 m 242.2042 m accuracies: 10.1918 m 10.1918 m 0.0001 m  
nav rotation: 0.0000 0.0000 175.6120 accuracies: 0.0000 0.0000 15.0000  
upside-down: no  
GPS lat:46.177891 long:22.764690 satellites:3 height:300.5m hdop:7.4 vdop:1.0m hacc:3.2m vacc:6.4 flags:G2 'stand alone 2D solution'  
north:5115326.269 m east:636204.644 m zone:34T  
Initial pre position (0:indoor)  
-0.997 0.077 0.000 13.699  
-0.077 -0.997 0.000 -64.123  
0.000 0.000 1.000 15.111  
0.000 0.000 0.000 1.000

Level system info: dynamic compensator available.



# Scan position '55'

Scan position is member of group(s):

Status registration '[102h] registered with cloud to cloud'

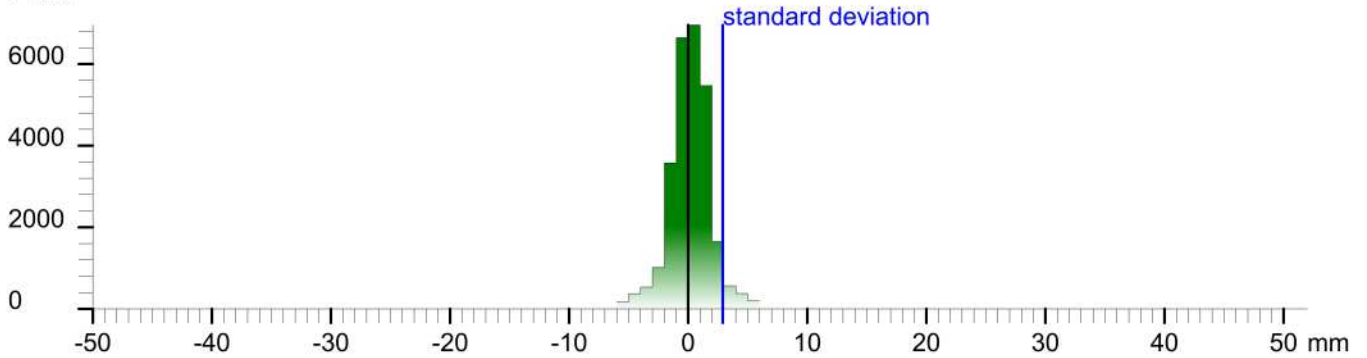
Registration matrix:

0.525118	-0.851029	0.001065	34.6229 m
0.851030	0.525117	-0.001177	-29.3178 m
0.000443	0.001524	0.999999	-2.0881 m
0.000000	0.000000	0.000000	1.0000

Result registration cloud to cloud standard deviation: 2.9 mm

## Deviation histogram

Points



## Scan 'Bis. Ribita Sc.55'

Scanner 'Z+F IMAGER 5016' serial number '5016-0100' Firmware 9.0.3.6562-0

Scan resolution 'High' quality 'Normal'

Metadata	Value
comment	
operator	

Scan command: `cd /usr/local/bin; ./rcsenser 9.0.3 -memorize 1 -file "Bis. Ribita Sc.55" -scanner "50" -path "Biserica Ribita" -project "Biserica Ribita" -projectTemplate "" -compensator -nav -temperature "20" -camera "i-cam" -panoramaparams test -resolution h -quality default -ifrom "0" -to "101" -hfrom "20" -to "340"`

Sensor  
sensors: 3096 'barometer translation rotation'  
Barometer: 0.984382 bar 243.144 m  
nav translation: -9.5362 m -1.8729 m 242.9228 m accuracies: 10.0231 m 10.0231 m 0.0000 m  
nav rotation: 0.0000 0.0000 307.4332 accuracies: 0.0000 0.0000 15.0000  
upside-down: no  
Initial pre position (0:indoor)  
0.608 -0.794 0.000 4.163  
0.794 0.608 0.000 -65.995  
0.000 0.000 1.000 15.829  
0.000 0.000 0.000 1.000

Level system info: dynamic compensator available.





# Scan position '56'

Scan position is member of group(s):

Status registration '[102h] registered with cloud to cloud'

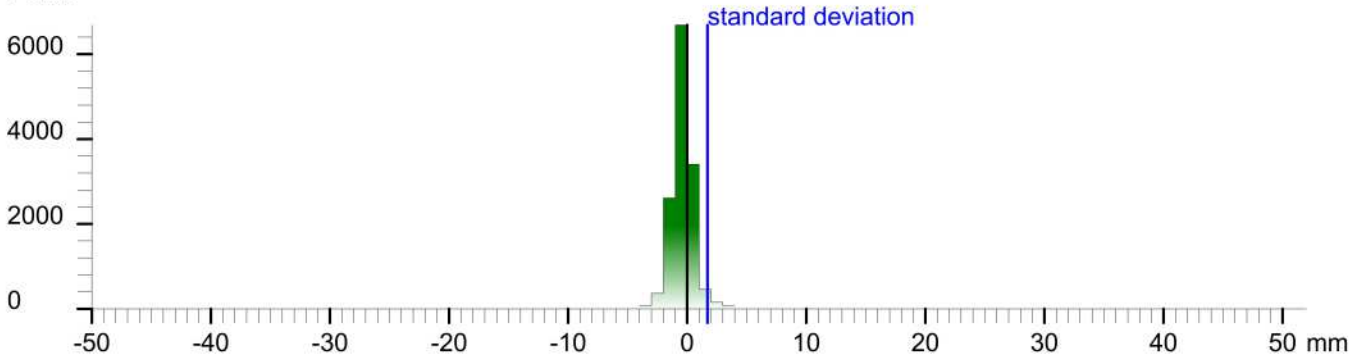
Registration matrix:

0.616381	-0.787449	0.000770	34.6653 m
0.787449	0.616380	-0.000929	-27.9663 m
0.000257	0.001178	0.999999	-2.0925 m
0.000000	0.000000	0.000000	1.0000

Result registration cloud to cloud standard deviation: 1.7 mm

## Deviation histogram

Points



## Scan 'Bis. Ribita Sc.56'

Scanner 'Z+F IMAGER 5016' serial number '5016-0100' Firmware 9.0.3.6562-0

Scan resolution 'High' quality 'Normal'

Metadata	Value
comment	
operator	

Scan command: `cd /usr/local/bin; ./rcsenser 9.0.3 -memorize 1 -file "Bis. Ribita Sc.56" -scanset "56" -path "Biserica Ribita" -project "Biserica Ribita" -projectTemplate "" -compensator -nav -temperature "20" -camera "i-cam" -panoramasettings test -resolution h -quality default -from "0" -to "101" -hfrom "20" -hto "340"`

Sensor  
sensors: 3096 ' barometer translation rotation'  
Barometer: 0.984398 bar 243.006 m  
nav translation: 0.4969 m 1.0690 m 242.5220 m accuracies: 5.6913 m 5.6913 m 0.0001 m  
nav rotation: 0.0000 0.0000 307.4960 accuracies: 0.0000 0.0000 15.0000  
upside-down: no  
Initial pre position (0:indoor)  
0.609 -0.793 0.000 4.662  
0.793 0.609 0.000 -64.926  
0.000 0.000 1.000 15.429  
0.000 0.000 0.000 1.000

Level system info: dynamic compensator available.



# Scan position '57'

Scan position is member of group(s):

Status registration '[10123h] preregistered with cloud to cloud, manually'

Registration matrix:

-0.944978	-0.327134	0.000255	35.4802 m
0.327134	-0.944978	0.000162	-26.5252 m
0.000188	0.000236	1.000000	-2.0890 m
0.000000	0.000000	0.000000	1.0000

## Scan 'Bis. Ribita Sc.57'

Scanner 'Z+F IMAGER 5016' serial number '5016-0100' Firmware 9.0.3.6562-0

Scan resolution 'High' quality 'Normal'

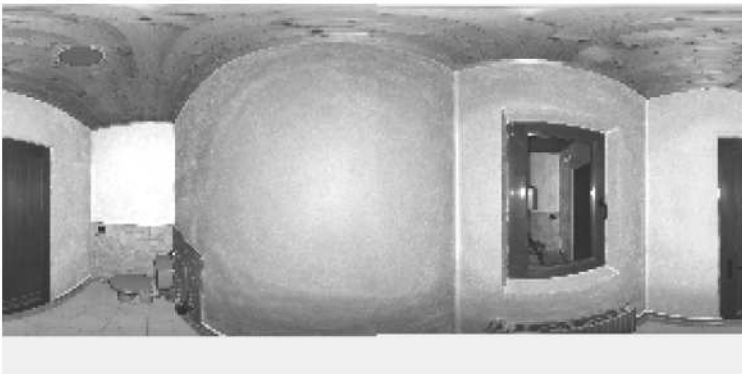
Metadata	Value
comment	
operator	

Scan command: 'c:\1\_RCServer 9.0.3' -memorize 1 -file 'Bis. Ribita Sc.57' -scans '57' -path 'Biserica Ribita' -project 'Biserica Ribita' -projectTemplate "" -compensator -nav -temperature '20' -camera '1-cam' -panoramaparams test -resolution h -quality default -ifrom '0' -to '181' -ifrom1 '20' -to1 '340'

### Sensor

sensors: 3096 ' barometer translation rotation'  
Barometer: 0.984449 bar 242.578 m  
nav translation: 0.0000 m 0.0000 m 242.5182 m accuracies: 5.1000 m 5.1000 m 0.0000 m  
nav rotation: 0.0000 0.0000 184.7219 accuracies: 0.0000 0.0000 15.0000  
upside-down: no  
Initial pre position (0:indoor)  
-0.997 -0.062 0.000 4.662  
0.082 -0.997 0.000 -64.926  
0.000 0.000 1.000 15.425  
0.000 0.000 0.000 1.000

Level system info: dynamic compensator available.



# Scan position '58'

Scan position is member of group(s):

Status registration '[10123h] preregistered with cloud to cloud, manually'

Registration matrix:

0.680731	-0.732534	-0.000023	32.6155 m
0.732534	0.680731	-0.000020	-27.7402 m
0.000030	-0.000004	1.000000	-2.0844 m
0.000000	0.000000	0.000000	1.0000

## Scan 'Bis. Ribita Sc.58'

Scanner 'Z+F IMAGER 5016' serial number '5016-0100' Firmware 9.0.3.6562-0

Scan resolution 'High' quality 'Normal'

**Metadata**    **Value**  
**comment**  
**operator**

Scan command: 'c:\1\_PCServer 9.0.3' -memorize 1 -file 'Bis. Ribita Sc.58' -scans '58' -path 'Biserica Ribita' -project 'Biserica Ribita' -projectTemplate "" -compensator -nav -temperature '20' -camera '1-cam' -panoramaparams test -resolution h -quality default -ifrom '0' -to '181' -ifrom1 '20' -to1 '340'

Sensor  
sensors: 3096 ' barometer translation rotation'  
Barometer: 0.984465 bar 242.438 m  
nav translation: 0.6693 m -0.9352 m 242.6375 m accuracies: 5.6843 m 5.6843 m 0.0000 m  
nav rotation: 0.0000 0.0000 314.3350 accuracies: 0.0000 0.0000 15.0000  
upside-down: no  
Initial pre position (0:indoor)  
0.699 -0.715 0.000 5.331  
0.715 0.699 0.000 -65.862  
0.000 0.000 1.000 15.544  
0.000 0.000 0.000 1.000

Level system info: dynamic compensator available.



# Scan position '59'

Scan position is member of group(s):

Status registration '[102h] registered with cloud to cloud'

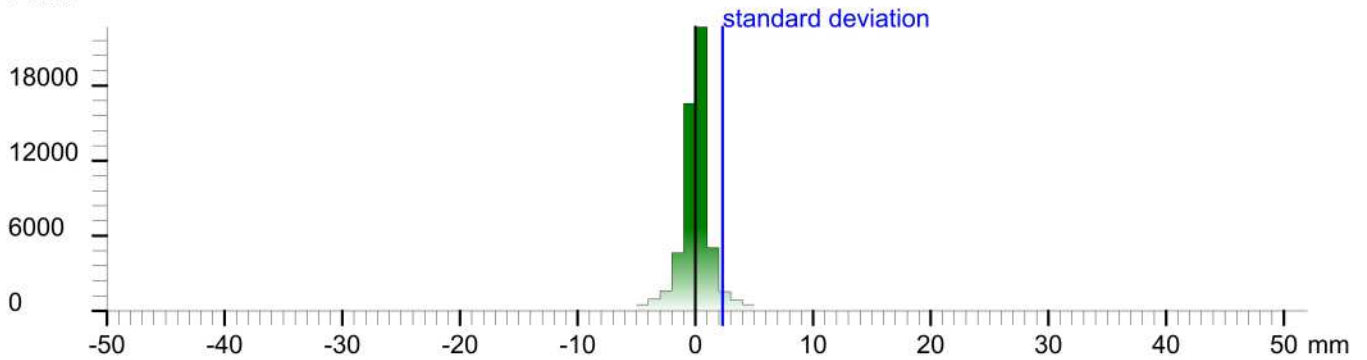
Registration matrix:

```
-0.188035  0.982162  0.001283  29.1608 m
-0.982163 -0.188034 -0.000793 -19.7183 m
-0.000537 -0.001409  0.999999  -1.6120 m
0.000000  0.000000  0.000000  1.0000
```

Result registration cloud to cloud standard deviation: 2.3 mm

## Deviation histogram

Points



## Scan 'Bis. Ribita Sc.59'

Scanner 'Z+F IMAGER 5016' serial number '5016-0100' Firmware 9.0.3.6562-0

Scan resolution 'High' quality 'Normal'

**Metadata**    **Value**  
**comment**  
**operator**

Scan command: `cd /usr/local/bin; ./rcsenser 9.0.3 -memorize 1 -file "Bis. Ribita Sc.59" -screener "59" -path "Biserica Ribita" -project "Biserica Ribita" -projectTemplate "" -compensator -nav -temperature "20" -camera "i-cam" -panoramaparams test -resolution h -quality default -ifrom "0" -to "101" -hfrom "20" -hto "340"`

Sensor  
sensors: 3096 ' barometer translation rotation'  
Barometer: 0.984349 bar 243.424 m  
nav translation: -8.1099 m 8.4150 m 242.6637 m accuracies: 11.6458 m 11.6458 m 0.0002 m  
nav rotation: 0.0000 0.0000 68.8423 accuracies: 0.0000 0.0000 15.0000  
upside-down: no  
Initial pre position (0:indoor)  
0.361 0.933 0.000 -2.779  
-0.933 0.361 0.000 -57.447  
0.000 0.000 1.000 15.570  
0.000 0.000 0.000 1.000

Level system info: dynamic compensator available.



# Scan position '6'

Scan position is member of group(s):

Status registration '[102h] registered with cloud to cloud'

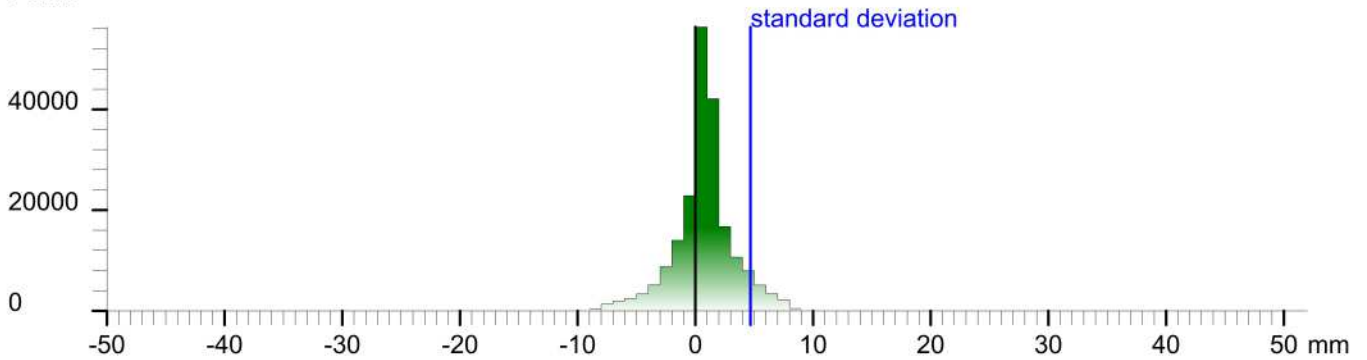
Registration matrix:

```
0.077781 -0.996970 0.000222 28.3464 m
0.996970 0.077781 -0.000885 -11.5644 m
0.000865 0.000290 1.000000 -0.2705 m
0.000000 0.000000 0.000000 1.0000
```

Result registration cloud to cloud standard deviation:4.7 mm

## Deviation histogram

Points



## Scan 'Bis. Ribita Sc.5'

Scanner 'Z+F IMAGER 5016' serial number '5016-0100' Firmware 9.0.3.6562-0

Scan resolution 'High' quality 'Normal'

**Metadata**    **Value**  
**comment**  
**operator**

```
Scan command: -crl "Z+F IMAGER 9.0.3" -memorize 1 -file "Bis. Ribita Sc.5" -scanpos "0" -path "Biserica Ribita" -project "Biserica Ribita" -projectTemplate "" -compensator -nav -temperature "20" -camera "i-cam" -panoramaparams test-resolution h -quality default -from "0" -to "10" -h-bom1 "20" -h-a1 "340"
Sensor
sensors: 3100 * barometer translation rotation gps*
Barometer: 0.986176 bar 227.868 m
nav translation: 0.0767 m 5.3556 m 227.6393 m accuracies: 7.7987 m 7.7987 m 0.0000 m
nav rotation: 0.0000 0.0000 268.5401 accuracies: 0.0000 0.0000 15.0000
upside-down: no
GPS lat:46.178104 long:22.764795 satellites:5 height:307.1m hdop:2.0 vdop:2.8m haacc:6.0m vacc:8.5 flags:G3 'stand alone 3D solution'
north:5115350.184 m east:636212.213 m zone:34T
Initial pre position (3:outdoor)
-0.025 -1.000 0.000 23.251
1.000 -0.025 0.000 -8.914
0.000 0.000 1.000 0.947
0.000 0.000 0.000 1.000
```

Level system info: dynamic compensator available.





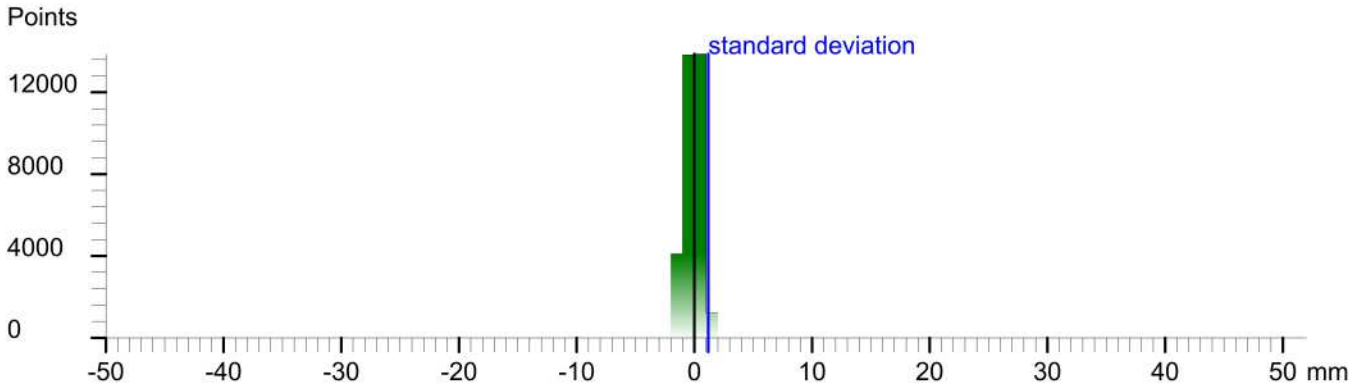
# Scan position '60'

Scan position is member of group(s):  
Status registration '[102h] registered with cloud to cloud'  
Registration matrix:

```
-0.579873  0.814706  0.001531  29.1105 m  
-0.814707 -0.579872 -0.000872 -21.2614 m  
0.000177 -0.001753  0.999998  -1.6090 m  
0.000000  0.000000  0.000000  1.0000
```

Result registration cloud to cloud standard deviation: 1.2 mm

## Deviation histogram



## Scan 'Bis. Ribita Sc.60'

Scanner 'Z+F IMAGER 5016' serial number '5016-0100' Firmware 9.0.3.6562-0  
Scan resolution 'High' quality 'Normal'

**Metadata**    **Value**  
**comment**  
**operator**

```
Scan command: -crl "ZFCScanner 9.0.3" -memorize 1 -file "Bis. Ribita Sc.60" -scanset "00" -path "Biserica Ribita" -project "Biserica Ribita" -projectTemplate "" -compensator -nav -temperature "20" -camera "i-cam" -panoramaparams test -resolution h -quality default -from "0" -to "101" -hfrom "20" -to "340"  
Sensor  
sensors: 3096 ' barometer translation rotation'  
Barometer: 0.984317 bar 243.898 m  
nav translation: 1.8741 m -1.9991 m 243.6402 m accuracies: 6.4931 m 6.4931 m 0.0000 m  
nav rotation: 0.0000 0.0000 122.3895 accuracies: 0.0000 0.0000 15.0000  
upside-down: no  
Initial pre position (0:indoor)  
-0.536 0.844 0.000 -0.905  
-0.844 -0.536 0.000 -59.446  
0.000 0.000 1.000 16.547  
0.000 0.000 0.000 1.000
```

Level system info: dynamic compensator available.



# Scan position '61'

Scan position is member of group(s):

Status registration '[102h] registered with cloud to cloud'

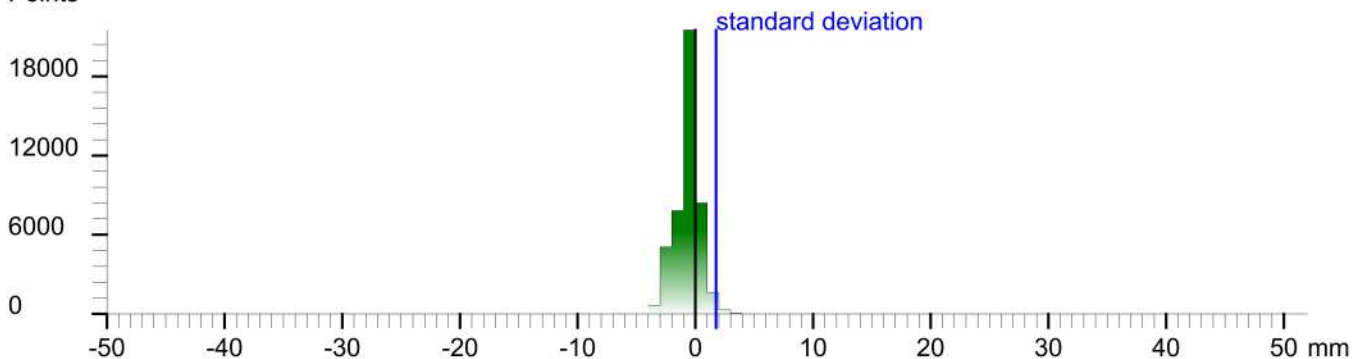
Registration matrix:

-0.372360	0.928087	0.001717	29.1942 m
-0.928089	-0.372358	-0.001119	-26.1908 m
-0.000399	-0.002010	0.999998	-2.0551 m
0.000000	0.000000	0.000000	1.0000

Result registration cloud to cloud standard deviation: 1.8 mm

## Deviation histogram

Points



## Scan 'Bis. Ribita Sc.61'

Scanner 'Z+F IMAGER 5016' serial number '5016-0100' Firmware 9.0.3.6562-0

Scan resolution 'High' quality 'Normal'

**Metadata**    **Value**  
**comment**  
**operator**

```
Scan command: -crl "Z+F IMAGER 5016" -memorize 1 -file "Bis. Ribita Sc.61" -scanner "61" -path "Biserica Ribita" -project "Biserica Ribita" -projectTemplate "" -compensator -nav -temperature "20" -camera "i-cam" -panoramasparams test -resolution h -quality default -ifrom "0" -to "101" -hfrom "20" -to "340"
Sensor
sensors: 3096 ' barometer translation rotation'
Barometer: 0.984404 bar 242.962 m
nav translation: 1.6461 m -3.4617 m 242.4745 m accuracies: 7.0181 m 7.0181 m 0.0001 m
nav rotation: 0.0000 0.0000 104.6324 accuracies: 0.0000 0.0000 15.0000
upside-down: no
Initial pre position (0:indoor)
-0.253 0.968 0.000 0.741
-0.968 -0.253 0.000 -62.907
0.000 0.000 1.000 15.381
0.000 0.000 0.000 1.000
```

Level system info: dynamic compensator available.



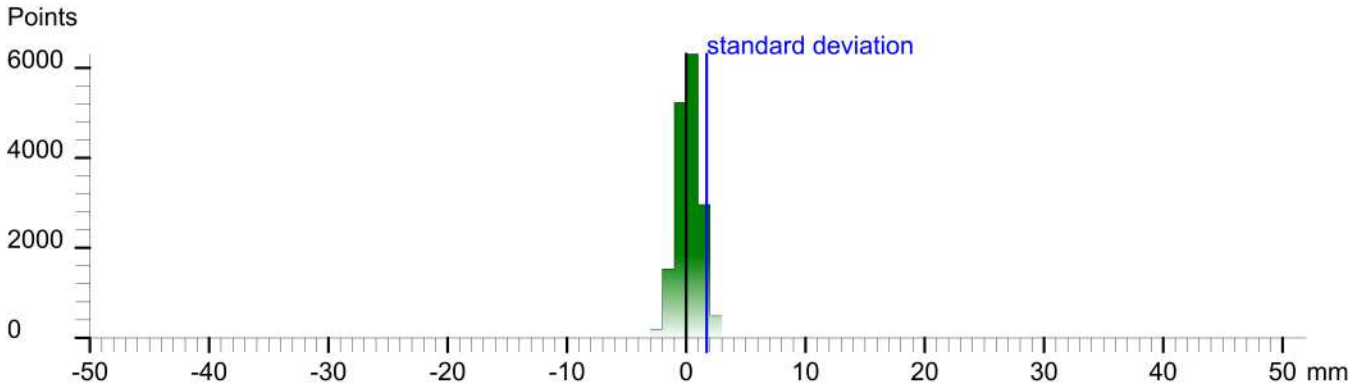
# Scan position '62'

Scan position is member of group(s):  
Status registration '[102h] registered with cloud to cloud'  
Registration matrix:

-0.946753	-0.321946	0.003048	11.1671 m
0.321947	-0.946758	0.000172	-1.3699 m
0.002831	0.001144	0.999995	2.4832 m
0.000000	0.000000	0.000000	1.0000

Result registration cloud to cloud standard deviation: 1.7 mm

## Deviation histogram



## Scan 'Bis. Ribita Sc.62'

Scanner 'Z+F IMAGER 5016' serial number '5016-0100' Firmware 9.0.3.6562-0  
Scan resolution 'High' quality 'Normal'

Metadata	Value
comment	
operator	

Scan command: `cd /usr/local/bin; ./rcsenser 9.0.3 -memorize 1 -file "Bis. Ribita Sc.62" -scanarea "02" -path "Biserica Ribita" -project "Biserica Ribita" -projectTemplate "" -nav -temperature "20" -camera "cam" -panoramaparams fast-resolution h-quality default -from "0" -to "101" -interval "20" -file "340"`

Sensor  
sensors: 3096 'barometer translation rotation'  
Barometer: 0.983833 bar 247.822 m  
nav translation: -5.7825 m 26.0105 m 247.6663 m accuracies: 19.1840 m 19.1840 m 0.0000 m  
nav rotation: 0.0000 0.0000 191.7610 accuracies: 0.0000 0.0000 15.0000  
upside-down: no  
Initial pre position (0:indoor)  
-0.979 -0.204 0.000 -5.041  
0.204 -0.979 0.000 -36.897  
0.000 0.000 1.000 20.573  
0.000 0.000 0.000 1.000

Level system info: no information about the level system stored in the zfs header



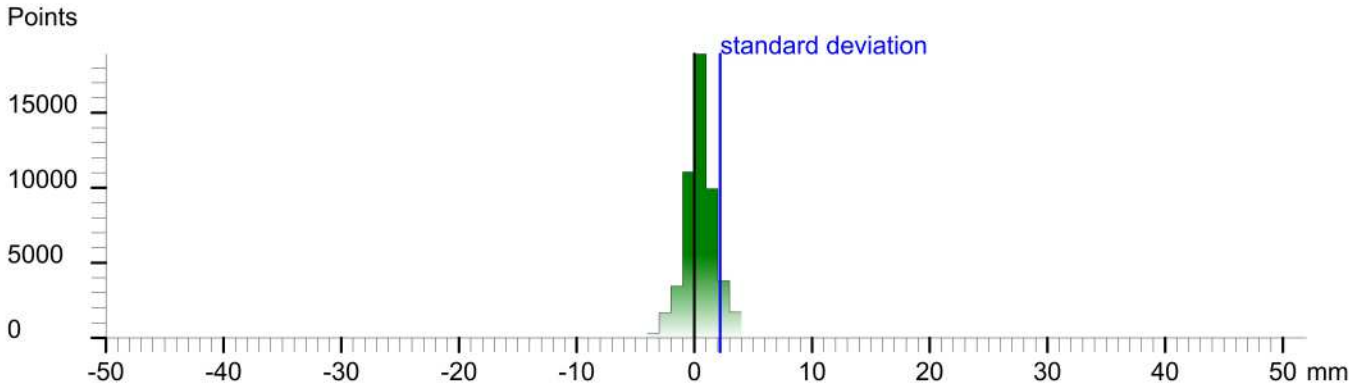
# Scan position '63'

Scan position is member of group(s):  
Status registration '[102h] registered with cloud to cloud'  
Registration matrix:

```
-0.699893  0.714244  0.002269  9.7010 m  
-0.714248 -0.699892 -0.001377 -2.1515 m  
0.000605 -0.002584  0.999996  2.4714 m  
0.000000  0.000000  0.000000  1.0000
```

Result registration cloud to cloud standard deviation: 2.2 mm

## Deviation histogram



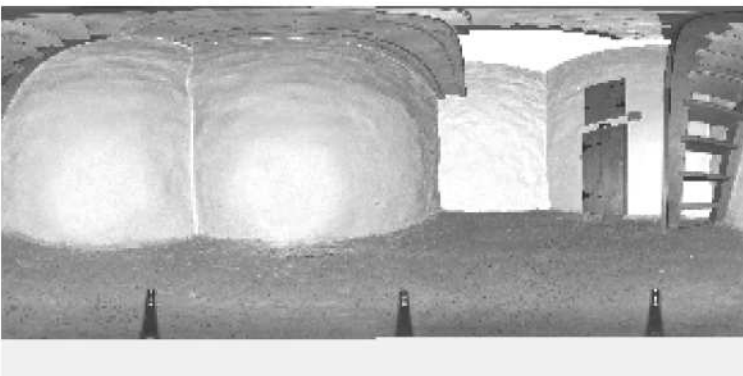
## Scan 'Bis. Ribita Sc.63'

Scanner 'Z+F IMAGER 5016' serial number '5016-0100' Firmware 9.0.3.6562-0  
Scan resolution 'High' quality 'Normal'

**Metadata**    **Value**  
**comment**  
**operator**

```
Scan command: -cli "Z+F IMAGER 9.0.3" -memorize 1 -file "Bis. Ribita Sc.63" -scanarea "03" -path "Biserica Ribita" -project "Biserica Ribita" -projectTemplate "" -nav -temperature "20" -camera "cam" -panoramaparams fast -resolution h -quality default -from "0" -to "180" -interval "20" -file "340"  
Sensor  
sensors: 3096 'barometer translation rotation'  
Barometer: 0.983820 bar 247.935 m  
nav translation: -3.0894 m -1.0676 m 247.9024 m accuracies: 6.7476 m 6.7476 m 0.0001 m  
nav rotation: 0.0000 0.0000 139.5448 accuracies: 0.0000 0.0000 15.0000  
upside-down: no  
Initial pre position (0:indoor)  
-0.761 0.649 0.000 -8.130  
-0.649 -0.761 0.000 -37.964  
0.000 0.000 1.000 20.809  
0.000 0.000 0.000 1.000
```

Level system info: no information about the level system stored in the zfs header



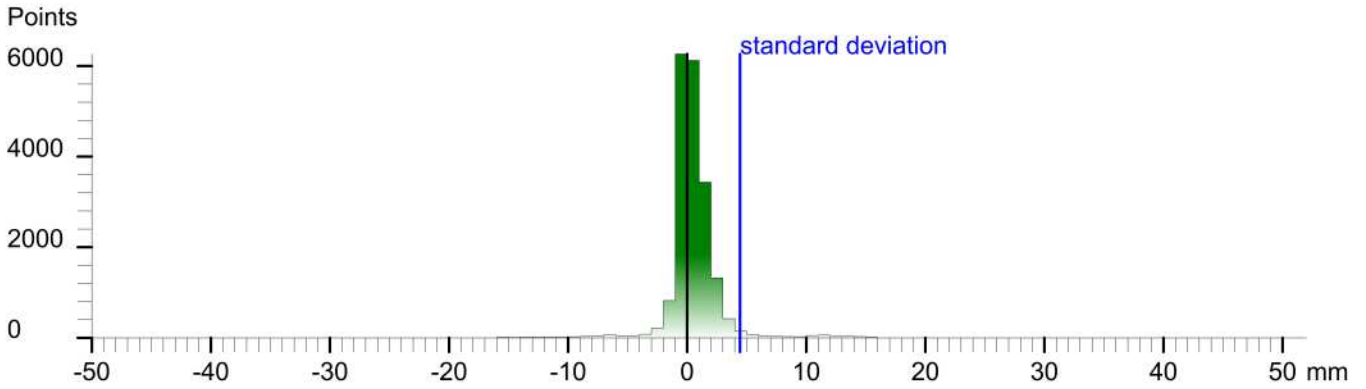
# Scan position '64'

Scan position is member of group(s):  
Status registration '[102h] registered with cloud to cloud'  
Registration matrix:

```
0.990508 0.137456 -0.000417 9.2016 m
-0.137456 0.990508 -0.000348 -2.0236 m
0.000366 0.000402 1.000000 5.3299 m
0.000000 0.000000 0.000000 1.0000
```

Result registration cloud to cloud standard deviation:4.4 mm

## Deviation histogram



## Scan 'Bis. Ribita Sc.64'

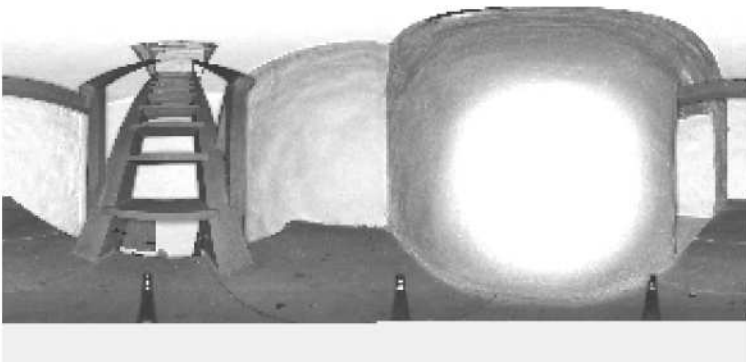
Scanner 'Z+F IMAGER 5016' serial number '5016-0100' Firmware 9.0.3.6562-0  
Scan resolution 'High' quality 'Normal'

Metadata	Value
comment	
operator	

```
Scan command: -crl "Z+F IMAGER 9.0.3" -memorize 1 -file "Bis. Ribita Sc.64" -scanner "64" -path "Biserica Ribita" -project "Biserica Ribita" -projectTemplate "" -nav -temperature "20" -camera "cam" -panoramaparams fast-resolution h-quality default -from "0" -to "101" -interval "20" -file "340"
```

Sensor  
sensors: 3096 ' barometer translation rotation'  
Barometer: 0.983613 bar 249.703 m  
nav translation: -9.6163 m 5.8675 m 250.0919 m accuracies: 10.7473 m 10.7473 m 0.0000 m  
nav rotation: 0.0000 0.0000 5.8457 accuracies: 0.0000 0.0000 141.7852  
upside-down: no  
Initial pre position (0:indoor)  
0.995 0.102 0.000 -17.747  
-0.102 0.995 0.000 -32.297  
0.000 0.000 1.000 22.999  
0.000 0.000 0.000 1.000

Level system info: no information about the level system stored in the zfs header





# Scan position '65'

Scan position is member of group(s):

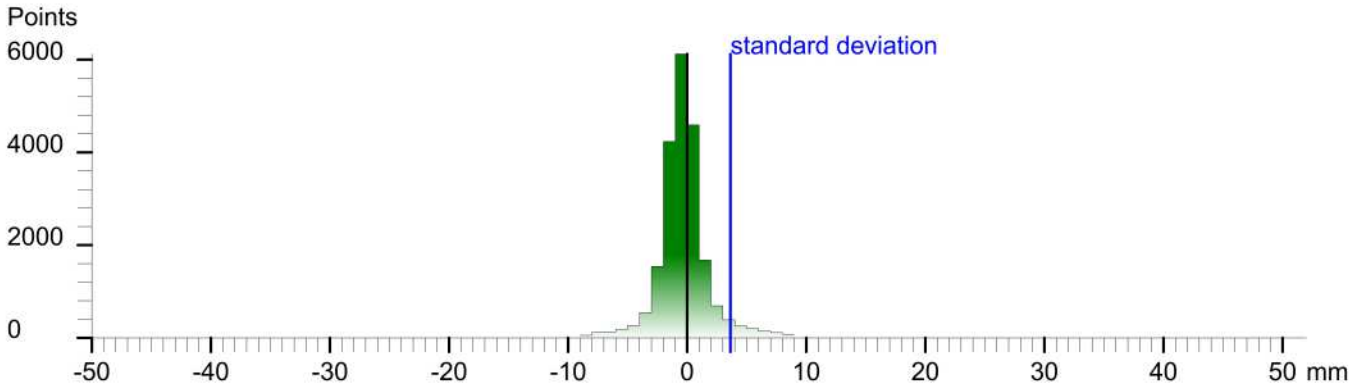
Status registration '[102h] registered with cloud to cloud'

Registration matrix:

```
-0.428327 -0.903624 0.000333 10.8844 m
0.903624 -0.428327 -0.000387 -1.2170 m
0.000492 0.000135 1.000000 7.8233 m
0.000000 0.000000 0.000000 1.0000
```

Result registration cloud to cloud standard deviation:3.6 mm

## Deviation histogram



## Scan 'Bis. Ribita Sc.65'

Scanner 'Z+F IMAGER 5016' serial number '5016-0100' Firmware 9.0.3.6562-0

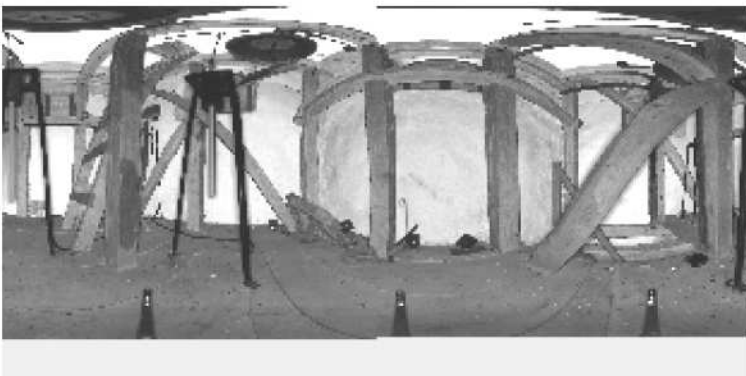
Scan resolution 'High' quality 'Normal'

Metadata	Value
comment	
operator	

Scan command: `cd /home/.../RCSense 9.0.3 -memorize 1 -file "Bis. Ribita Sc.65" -scanpos "00" -path "Biserica Ribita" -project "Biserica Ribita" -projectTemplate "" -nav -temperature "20" -camera "cam" -panoramaparams fast-resolution h-quality default -from "0" -to "10" -interval "20" -file "310"`

Sensor  
sensors: 3096 'barometer translation rotation'  
Barometer: 0.983254 bar 252.764 m  
nav translation: 0.5374 m -4.5016 m 252.1861 m accuracies: 7.3856 m 7.3856 m 0.0001 m  
nav rotation: 0.0000 0.0000 232.9948 accuracies: 0.0000 0.0000 15.0000  
upside-down: no  
Initial pre position (0:indoor)  
-0.602 -0.799 0.000 -17.209  
0.799 -0.602 0.000 -36.799  
0.000 0.000 1.000 25.093  
0.000 0.000 0.000 1.000

Level system info: no information about the level system stored in the zfs header



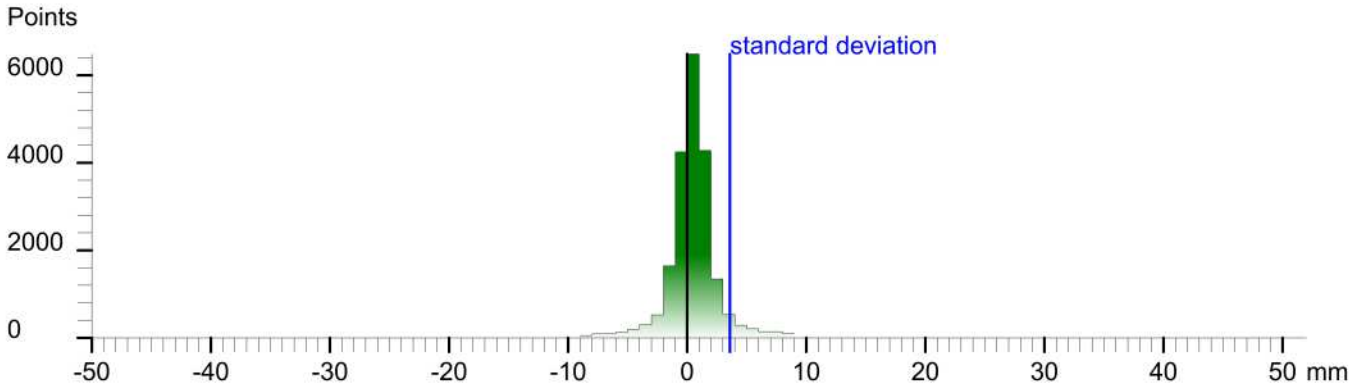
# Scan position '66'

Scan position is member of group(s):  
Status registration '[102h] registered with cloud to cloud'  
Registration matrix:

```
-0.912058 -0.410063 -0.000514 10.0735 m  
0.410063 -0.912054 -0.002635 -2.0486 m  
0.000612 -0.002614 0.999996 7.8373 m  
0.000000 0.000000 0.000000 1.0000
```

Result registration cloud to cloud standard deviation: 3.6 mm

## Deviation histogram



## Scan 'Bis. Ribita Sc.66'

Scanner 'Z+F IMAGER 5016' serial number '5016-0100' Firmware 9.0.3.6562-0  
Scan resolution 'High' quality 'Normal'

Metadata	Value
comment	
operator	

```
Scan command: -crl "Z+F IMAGER 9.0.3" -memorize 1 -file "Bis. Ribita Sc.66" -scanpos "66" -path "Biserica Ribita" -project "Biserica Ribita" -projectTemplate "" -nav -temperature "20" -camera "cam" -panoramaparams fast-resolution h-quality default -from "0" -to "10" -interval "20" -file "360"
```

Sensor  
sensors: 3096 ' barometer translation rotation'  
Barometer: 0.983277 bar 252.567 m  
nav translation: -1.8375 m -0.4140 m 252.1233 m accuracies: 6.0572 m 6.0572 m 0.0005 m  
nav rotation: 0.0000 0.0000 197.6260 accuracies: 0.0000 0.0000 15.0000  
upside-down: no  
Initial pre position (0:indoor)  
-0.953 -0.303 0.000 -19.047  
0.303 -0.953 0.000 -37.213  
0.000 0.000 1.000 25.030  
0.000 0.000 0.000 1.000

Level system info: no information about the level system stored in the zfs header



# Scan position '7'

Scan position is member of group(s):

Status registration '[102h] registered with cloud to cloud'

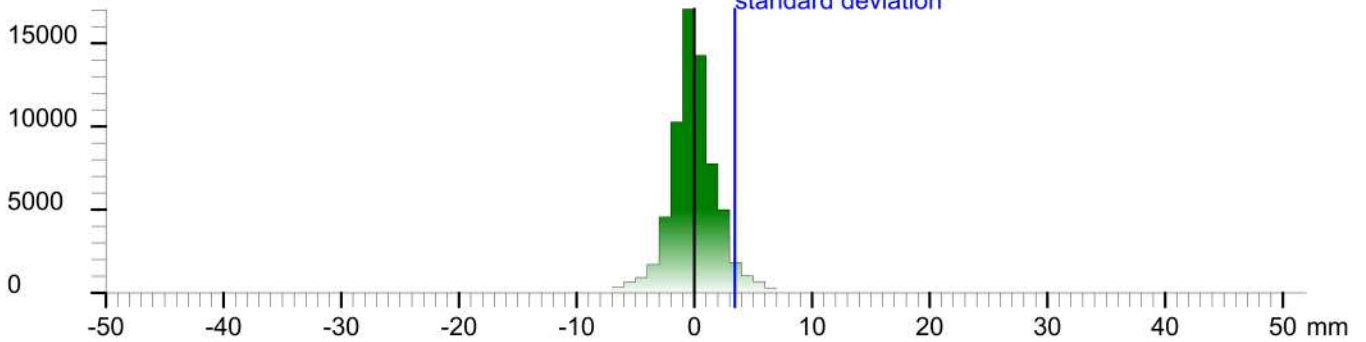
Registration matrix:

```
0.905008 0.425393 0.001427 29.0460 m
-0.425393 0.905009 0.000197 -1.2165 m
-0.001208 -0.000785 0.999999 -0.1351 m
0.000000 0.000000 0.000000 1.0000
```

Result registration cloud to cloud standard deviation:3.4 mm

## Deviation histogram

Points



## Scan 'Bis. Ribita Sc.6'

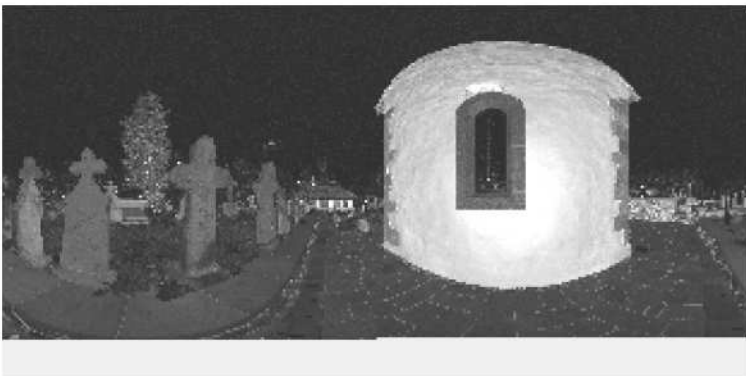
Scanner 'Z+F IMAGER 5016' serial number '5016-0100' Firmware 9.0.3.6562-0

Scan resolution 'High' quality 'Normal'

**Metadata**    **Value**  
**comment**  
**operator**

```
Scan command: -crl "Z+F IMAGER 9.0.3" -memorize 1 -file "Bis. Ribita Sc.6" -scanpos "7" -path "Biserica Ribita" -project "Biserica Ribita" -projectTemplate "" -compensator -nav -temperature "20" -camera "i-cam" -panoramaparams test-resolution h -quality default -from "0" -to "10" -hbm1 "20" -hbm1 "340"
Sensor
sensors: 3100 ' barometer translation rotation gps'
Barometer: 0.986012 bar 229.264 m
nav translation: 5.3952 m 11.7268 m 229.5113 m accuracies: 11.6079 m 11.6079 m 0.0000 m
nav rotation: 0.0000 0.0000 22.9079 accuracies: 0.0000 0.0000 15.0000
upside-down: no
GPS lat:46.178188 long:22.764812 satellites:6 height:310.8m hdop:2.0 vdop:2.5m haacc:8.9m vacc:5.5 flags:G3 'stand alone 3D solution'
north:5115359.538 m east:636213.330 m zone:34T
Initial pre position (3:outdoor)
0.921 0.389 0.000 28.646
-0.389 0.921 0.000 2.813
0.000 0.000 1.000 2.819
0.000 0.000 0.000 1.000
```

Level system info: dynamic compensator available.



# Scan position '8'

Scan position is member of group(s):

Status registration '[102h] registered with cloud to cloud'

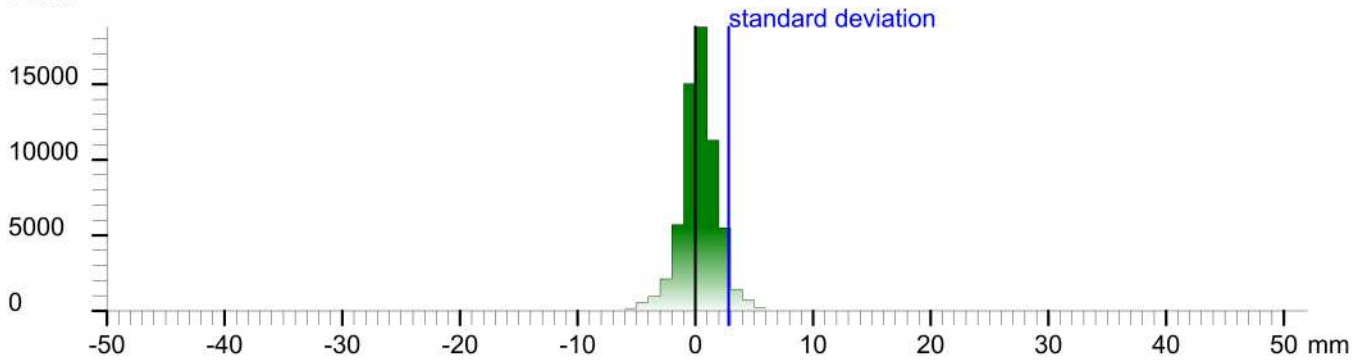
Registration matrix:

0.586682	-0.809818	0.000500	27.7275 m
0.809818	0.586682	0.000030	4.5919 m
-0.000318	0.000387	1.000000	-0.1275 m
0.000000	0.000000	0.000000	1.0000

Result registration cloud to cloud standard deviation:2.8 mm

## Deviation histogram

Points



## Scan 'Bis. Ribita Sc.7'

Scanner 'Z+F IMAGER 5016' serial number '5016-0100' Firmware 9.0.3.6562-0

Scan resolution 'High' quality 'Normal'

**Metadata**    **Value**  
**comment**  
**operator**

```
Scan command: -crl "Z+F IMAGER 9.0.3" -memorize 1 -file "Bis. Ribita Sc.7" -scanpos "0" -path "Biserica Ribita" -project "Biserica Ribita" -projectTemplate "" -compensator -nav -temperature "20" -camera "i-cam" -panoramaparams test-resolution h -quality default -from "0" -to "10" -h-bom1 "20" -h-a1 "340"
Sensor
sensors: 3100 * barometer translation rotation gps*
Barometer: 0.986030 bar 229.11 m
nav translation: 4.6316 m 3.8628 m 228.9811 m accuracies: 8.1615 m 8.1615 m 0.0000 m
nav rotation: 0.0000 0.0000 305.9612 accuracies: 0.0000 0.0000 15.0000
upside-down: no
GPS lat:46.178249 long:22.764776 satellites:8 height:305.2m hdop:1.1 vdop:1.5m haacc:5.7m vacc:6.0 flags:G3 'stand alone 3D solution'
north:5115366.257 m east:636210.383 m zone:34T
Initial pre position (3:outdoor)
0.587 -0.809 0.000 28.047
0.809 0.587 0.000 2.736
0.000 0.000 1.000 2.289
0.000 0.000 0.000 1.000
```

Level system info: dynamic compensator available.





# Scan position '9'

Scan position is member of group(s):

Status registration '[102h] registered with cloud to cloud'

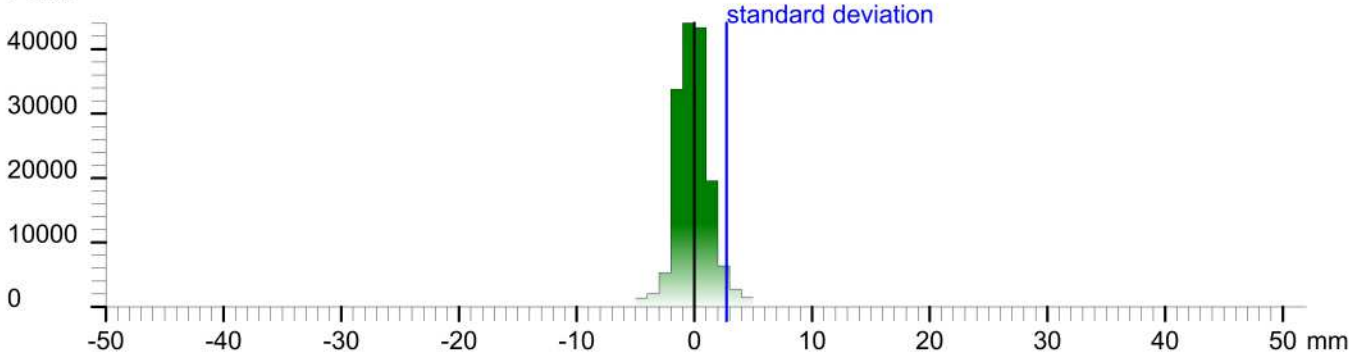
Registration matrix:

```
0.143367 -0.989670 0.000355 20.3488 m
0.989669 0.143367 -0.000992 4.2318 m
0.000931 0.000493 0.999999 -0.1159 m
0.000000 0.000000 0.000000 1.0000
```

Result registration cloud to cloud standard deviation:2.7 mm

## Deviation histogram

Points



## Scan 'Bis. Ribita Sc.8'

Scanner 'Z+F IMAGER 5016' serial number '5016-0100' Firmware 9.0.3.6562-0

Scan resolution 'High' quality 'Normal'

Metadata	Value
comment	
operator	

```
Scan command: -crl "Z+F IMAGER 9.0.3" -memorize 1 -file "Bis. Ribita Sc.8" -scanpos "9" -path "Biserica Ribita" -project "Biserica Ribita" -projectTemplate "" -compensator -nav -temperature "20" -camera "i-cam" -panoramaparams test-resolution h -quality default -from "0" -to "10" -h-bom1 "20" -h-a1 "340"
Sensor
sensors: 3100 * barometer translation rotation gps*
Barometer: 0.985998 bar 229.387 m
nav translation: -2.0681 m 7.2774 m 229.3940 m accuracies: 8.9134 m 8.9134 m 0.0001 m
nav rotation: 0.0000 0.0000 276.6473 accuracies: 0.0000 0.0000 15.0000
upside-down: no
GPS lat:46.178223 long:22.764688 satellites:6 height:306.5m hdop:4.7 vdop:3.3m hacc:24.0m vacc:14.0 flags:G3 *stand alone 3D solution*
north:5115363.140 m east:636203.677 m zone:34T
Initial pre position (3:outdoor)
0.116 -0.993 0.000 25.979
0.993 0.116 0.000 10.013
0.000 0.000 1.000 2.702
0.000 0.000 0.000 1.000
```

Level system info: dynamic compensator available.





# Labels

No labels stored in project

# Links

No links stored in project

# Summary

Number of scans: **66** used in **65** scan positions

Point clouds: **0**

Scans with color: **0** mapped **0**

Scans with thermal data: **0** mapped **0**

Scans with errors:**1** warnings:**1** messages:**0**

Missed or corrupted scans files: **0**

Scanners used in the project: **5016-0100**

**0** known targets used

**0** targets used in **0** of **65** scan positions

First scan taken at: **13.11.2023 09:48::25** last scan at: **13.11.2023 18:23:09**

Duration: **8h 34min 44sec**