

Project report

Date: Tue May 2 2023 10:37:42
Build with: Z+FLaserControl 9.0.2.24038
Project: Cula Izvoranu Geblescu
Master scan position: 20

47 scan positions used for registration.
47 scans registered.

Quality standard deviation of the cloud to cloud registration

d:3.46 mm

Superior matrix

0.709705	0.704499	0.000000	-17.0199 m
-0.704499	0.709705	0.000000	21.6967 m
0.000000	0.000000	1.000000	-8.3701 m
0.000000	0.000000	0.000000	1.0000

Scan position '10'

Scan position is member of group(s):

Status registration '[102h] registered with cloud to cloud'

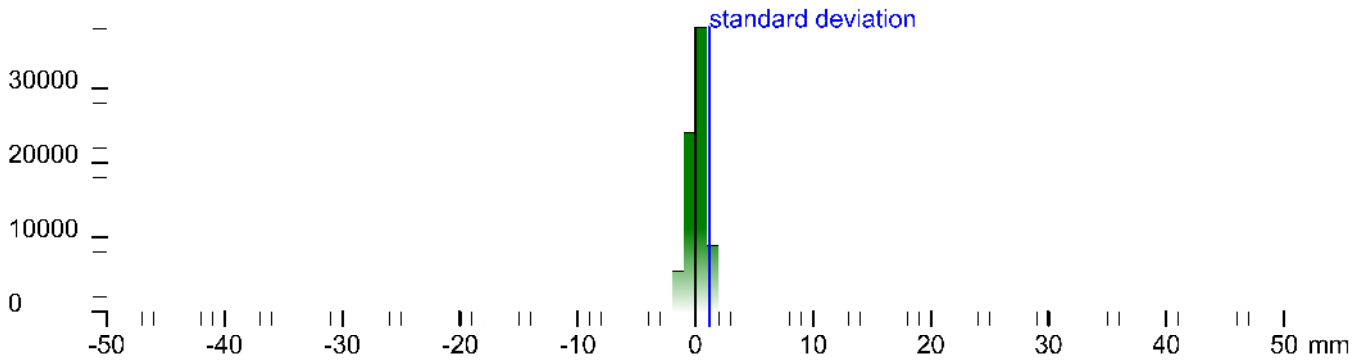
Registration matrix:

```
-0.796352 -0.604816 -0.004704 -14.7858 m  
0.604822 -0.796361 0.000401 -2.0363 m  
-0.003990 -0.002526 0.999989 3.0517 m  
0.000000 0.000000 0.000000 1.0000
```

Result registration cloud to cloud standard deviation: 1.2 mm

Deviation histogram

Points



Scan '10'

Scanner 'Z+F IMAGER 5016' serial number '5016-0100' Firmware 9.0.3.6562-0

Scan resolution 'High' quality 'Normal'

Metadata	Value
comment	
operator	

Sensor: 3096 *barometric transition rotation*
Barometer: 0.998458 bar / 23.88 m
nav translation: -3.1061 m 4.4680 m 123.8438 m accuracies: 7.8105 m 7.8105 m 0.0001 m
nav rotation: 0.0000 0.0000 261.1e-0 / accuracies: 0.0000 0.0000 1e-0000
upside-down: no
Initial pos position: (0:indoor)
-3.15 / -0.988 0.000 -11.740
0.988 -0.1e4 0.000 -2.708
0.000 0.000 1.000 -7.714
0.000 0.000 0.000 1.000

Level system info: dynamic compensator available.



Scan position '11'

Scan position is member of group(s):

Status registration '[102h] registered with cloud to cloud'

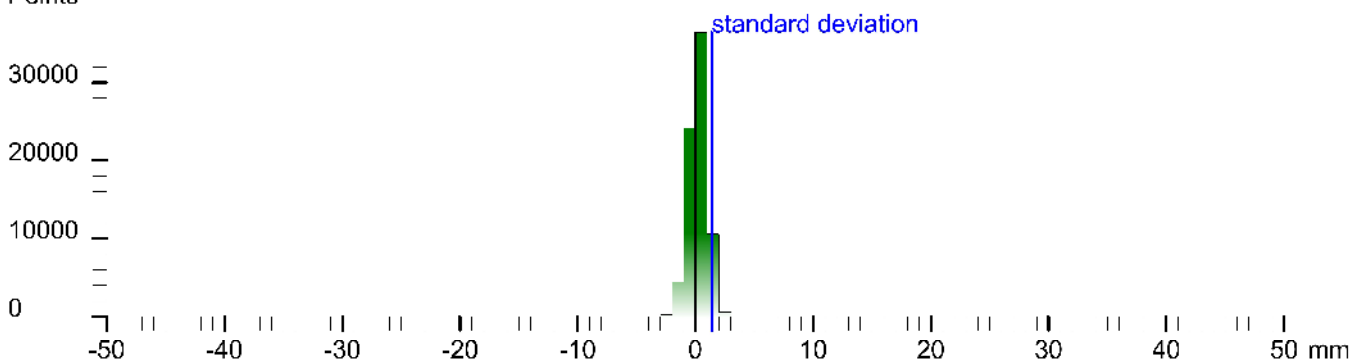
Registration matrix:

```
-0.741627 -0.670794 -0.005152 -16.9742 m
0.670807 -0.741632 -0.000955 -0.7532 m
-0.003181 -0.004165 0.999986 3.8689 m
0.000000 0.000000 0.000000 1.0000
```

Result registration cloud to cloud standard deviation: 1.4 mm

Deviation histogram

Points



Scan '11'

Scanner 'Z+F IMAGER 5016' serial number '5016-0100' Firmware 9.0.3.6562-0

Scan resolution 'High' quality 'Normal'

Metadata	Value
comment	
operator	

```
Scan position: '11' [102h] registered with cloud to cloud  
Sensor  
sensors: 3096 *barometric transition rotation*  
Barometer: 0.998386 bar / 24.487 m  
nav translation: -3.6168 m 4.4264 m 124.7227 m accuracies: 8.000* m 8.000* m 0.000* m  
nav rotation: 0.0000 0.0000 266.3e33 accuracies: 0.0000 0.0000 1e0.0000  
upside-down: no  
Initial pre position: (0/door)  
-3.067 -0.988 0.000 -15.387  
0.998 -0.064 0.000 -7.136  
0.000 0.000 1.000 -0.932  
0.000 0.000 0.000 1.000
```

Level system info: no information about the level system stored in the zfs header



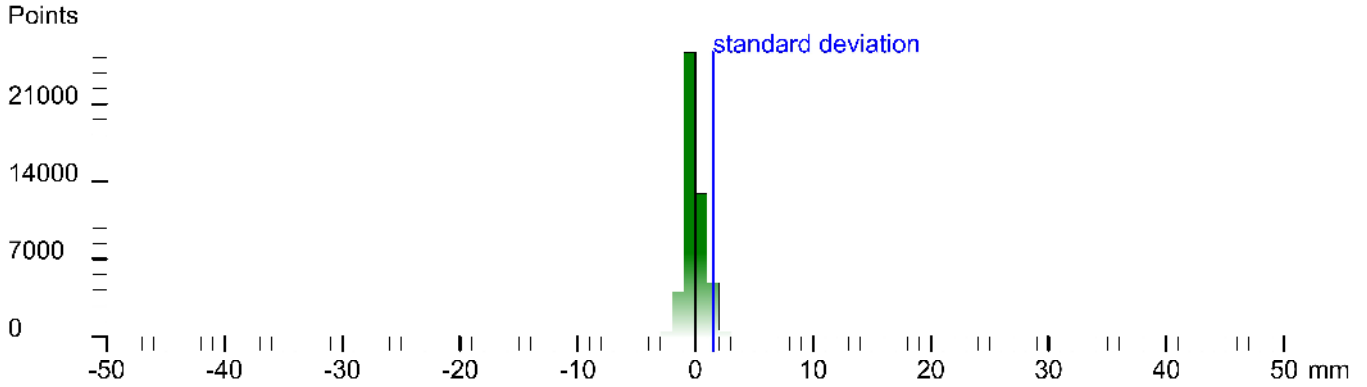
Scan position '12'

Scan position is member of group(s):
Status registration '[102h] registered with cloud to cloud'
Registration matrix:

```
0.898413 -0.439146 -0.002429 -15.0905 m  
0.439150 0.898412 0.002035 0.6649 m  
0.001289 -0.002895 0.999995 3.8655 m  
0.000000 0.000000 0.000000 1.0000
```

Result registration cloud to cloud standard deviation: 1.5 mm

Deviation histogram



Scan '12'

Scanner 'Z+F IMAGER 5016' serial number '5016-0100' Firmware 9.0.3.6562-0
Scan resolution 'High' quality 'Normal'

Metadata	Value
comment	
operator	

Sensor: 3096 *barometric transition rotation*
Barometer: 0.99849 bar / 23.956 m
nav translation: 2.4714 m 0.2951 m 123.50° / 1 m accuracies: 6.3675 m 6.3675 m 0.0000 m
nav rotation: 0.0000 0.0000 9.5047 / accuracies: 0.0000 0.0000 0.0000
upside-down: no
Initial pre position: (Girdoor)
0.841 0.331 0.000 / 2.916
-0.331 0.944 0.000 / 7.431
0.000 0.000 1.000 / -2.153
0.000 0.000 0.000 1.000

Level system info: no information about the level system stored in the zfs header



Scan position '13'

Scan position is member of group(s):

Status registration '[102h] registered with cloud to cloud'

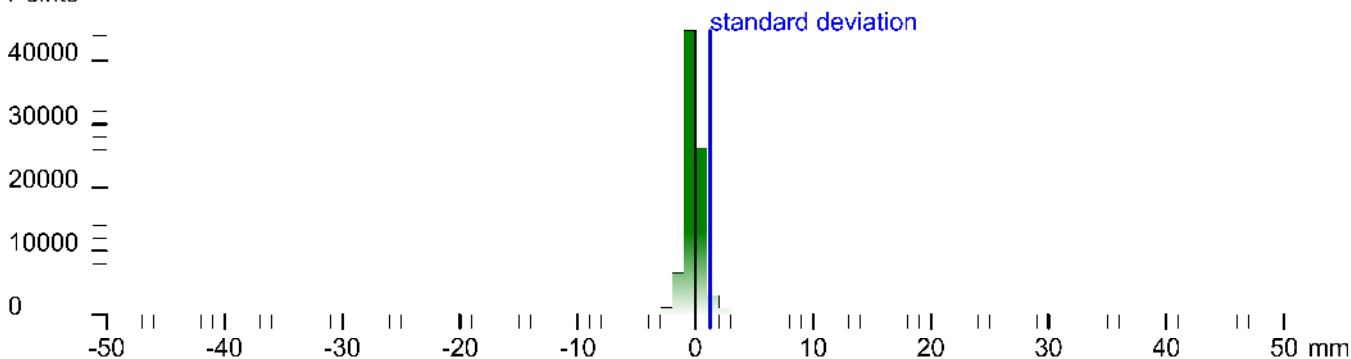
Registration matrix:

```
0.868841 -0.495086 -0.002637 -14.2727 m
0.495088 0.868843 0.000823 2.8925 m
0.001884 -0.002021 0.999996 3.8284 m
0.000000 0.000000 0.000000 1.0000
```

Result registration cloud to cloud standard deviation: 1.3 mm

Deviation histogram

Points



Scan '13'

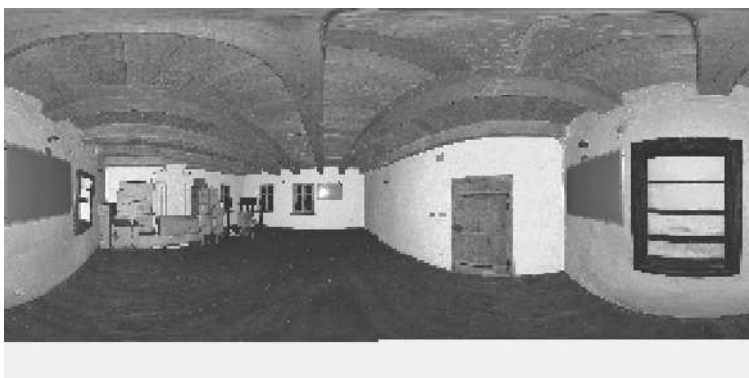
Scanner 'Z+F IMAGER 5016' serial number '5016-0100' Firmware 9.0.3.6562-0

Scan resolution 'High' quality 'Normal'

Metadata **Value**
comment
operator

```
Scan position: '13' - name: '13' - x: 14.1113 - y: 15.1113 - z: 123.3050 m - accuracy: 5.5608 m 5.5608 m 3.0000 m  
Sensor  
sensors: 3096 'barometric transition rotation'  
Barometer: 0.998498 bar / 23.543 m  
nav translation: 0.8711 m 0.2739 m 123.3050 m accuracies: 5.5608 m 5.5608 m 3.0000 m  
nav rotation: 0.0000 0.0000 4.9267 accuracies: 0.0000 0.0000 15.0000  
upside-down: no  
Initial position (Girdoor)  
0.866 0.258 0.000 -2.042  
-0.268 0.966 0.000 7.708  
0.000 0.000 1.000 -2.348  
0.000 0.000 0.000 1.000
```

Level system info: no information about the level system stored in the zfs header



Scan position '14'

Scan position is member of group(s):

Status registration '[102h] registered with cloud to cloud'

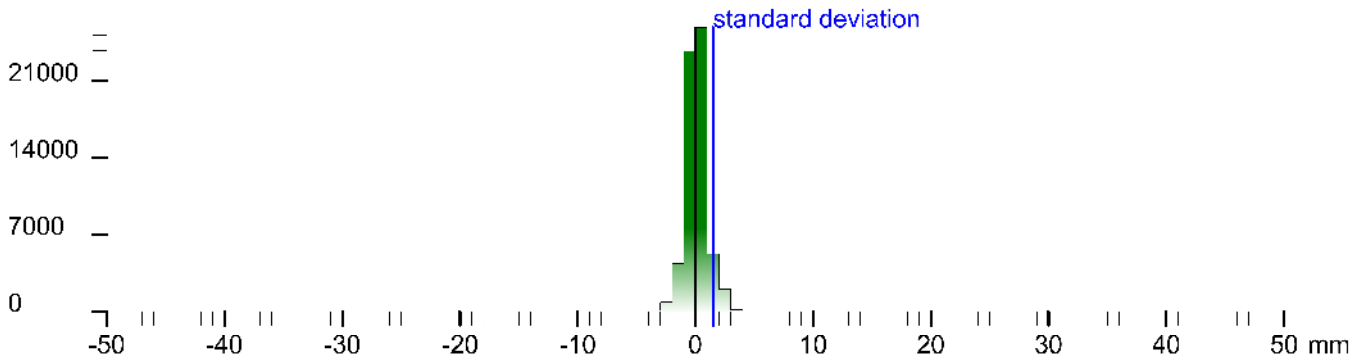
Registration matrix:

```
0.373374 -0.927681 -0.000857 -12.6493 m
0.927680 0.373376 -0.001019 6.5900 m
0.001265 -0.000415 0.999999 3.8370 m
0.000000 0.000000 0.000000 1.0000
```

Result registration cloud to cloud standard deviation: 1.5 mm

Deviation histogram

Points



Scan '14'

Scanner 'Z+F IMAGER 5016' serial number '5016-0100' Firmware 9.0.3.6562-0

Scan resolution 'High' quality 'Normal'

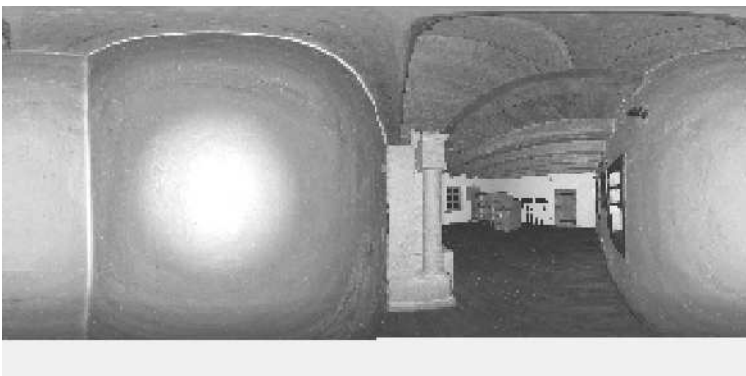
Metadata	Value
comment	
operator	

Sensor: 3096 *barometric transition rotation*

Barometer: 0.998818 bar / 22.528 m
nav translation: 0.7432 m 0.2920 m 122.5143 m accuracies: 5.5183 m 5.5183 m 0.0001 m
nav rotation: 0.0000 0.0000 537.0370 accuracies: 0.0000 0.0000 1s.0000
up/down: no

Initial pre position: (0/door)
0.921 0.390 0.000 -11.298
0.390 0.921 0.000 17.997
0.000 0.000 1.000 -3.140
0.000 0.000 0.000 1.000

Level system info: no information about the level system stored in the zfs header



Scan position '15'

Scan position is member of group(s):

Status registration '[102h] registered with cloud to cloud'

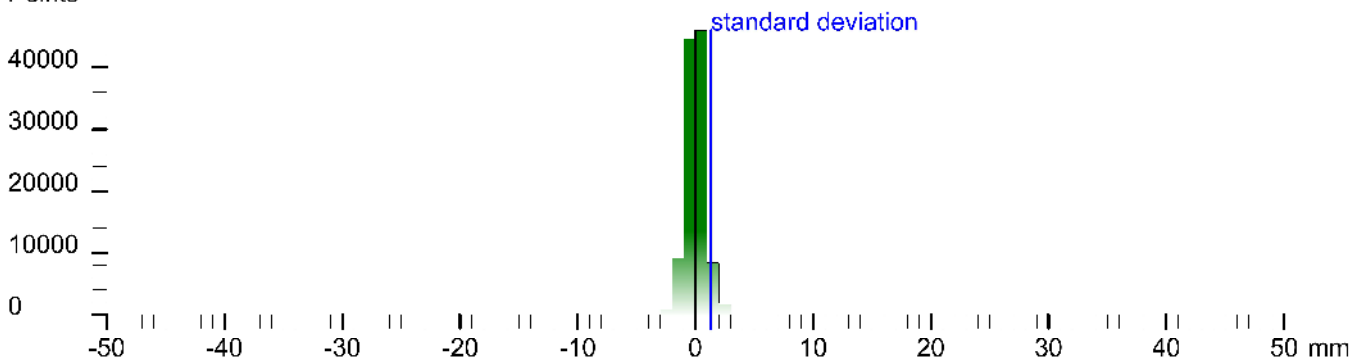
Registration matrix:

```
0.999949 -0.010088 -0.001557 -12.1234 m
0.010088 0.999949 0.000750 3.7607 m
0.001550 -0.000766 0.999998 3.8299 m
0.000000 0.000000 0.000000 1.0000
```

Result registration cloud to cloud standard deviation: 1.3 mm

Deviation histogram

Points



Scan '15'

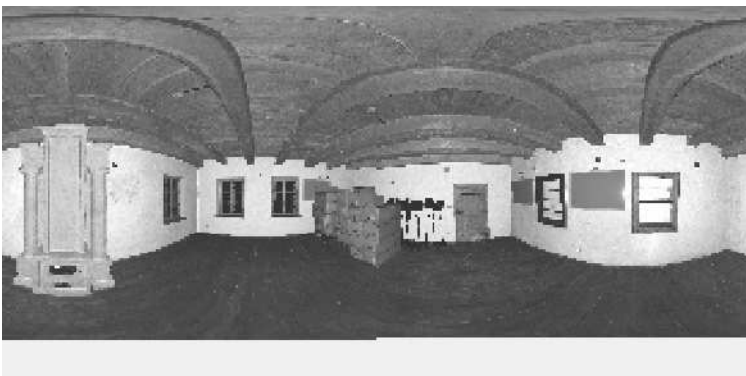
Scanner 'Z+F IMAGER 5016' serial number '5016-0100' Firmware 9.0.3.6562-0

Scan resolution 'High' quality 'Normal'

Metadata	Value
comment	
operator	

```
Scan position: '15' - name: '15' - x: 14.1175 m - y: 15.1175 m - z: 122.0311 m - accuracy: 5.1731 m - 5.1731 m - 0.0000 m
Sensor
sensors: 3096 *barometric rotation*
Barometer: 0.998657 bar / 22.139 m
nav translation: 0.5153 m -0.5015 m 122.0311 m accuracies: 5.1731 m 5.1731 m 0.0000 m
nav rotation: 0.0000 0.0000 44.1263 accuracies: 0.0000 0.0000 15.0000
upside-down: no
Initial pre position (Girdoor)
0.718 0.696 0.000 -0.783
-0.696 0.718 0.000 -0.496
0.000 0.000 1.000 -3.573
0.000 0.000 0.000 1.000
```

Level system info: no information about the level system stored in the zfs header



Scan position '16'

Scan position is member of group(s):

Status registration '[102h] registered with cloud to cloud'

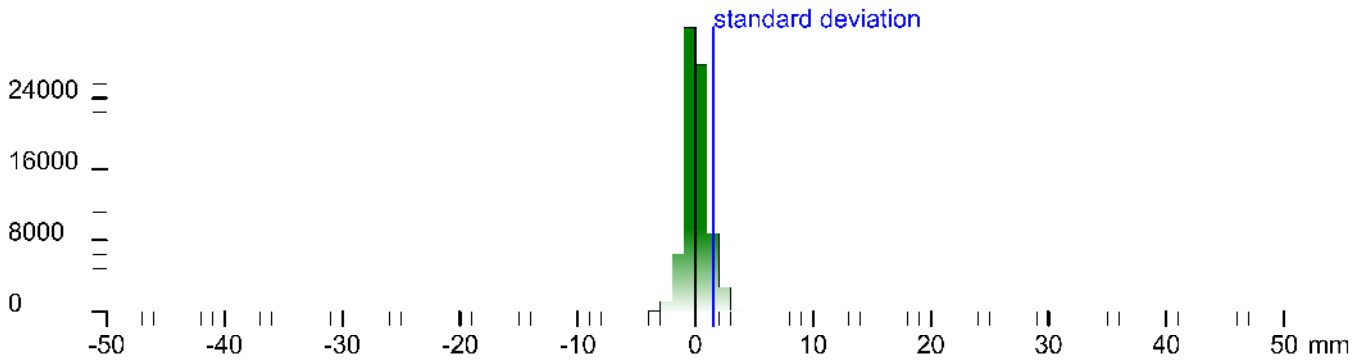
Registration matrix:

0.987694	-0.156397	-0.001278	-7.9182 m
0.156396	0.987694	0.000974	3.3973 m
0.001111	-0.001162	0.999998	3.8185 m
0.000000	0.000000	0.000000	1.0000

Result registration cloud to cloud standard deviation: 1.5 mm

Deviation histogram

Points



Scan '16'

Scanner 'Z+F IMAGER 5016' serial number '5016-0100' Firmware 9.0.3.6562-0

Scan resolution 'High' quality 'Normal'

Metadata	Value
comment	
operator	

Sensor

sensors: 3096 *barometric transition rotation*
Barometer: 0.998703 bar / 21.81 m
nav translation: 1.5959 m -0.863 m 121.1625 m accuracies: 0.31 m 0.314 m 0.300 m
nav rotation: 0.0000 0.0000 0.0000 accuracies: 0.0000 0.0000 0.0000
upside-down: no
Initial pre position: (Girdoor)
0.859 0.512 0.000 -8.187
-0.512 0.859 0.000 -6.633
0.000 0.000 1.000 -4.492
0.000 0.000 0.000 1.000

Level system info: no information about the level system stored in the zfs header



Scan position '17'

Scan position is member of group(s):

Status registration '[102h] registered with cloud to cloud'

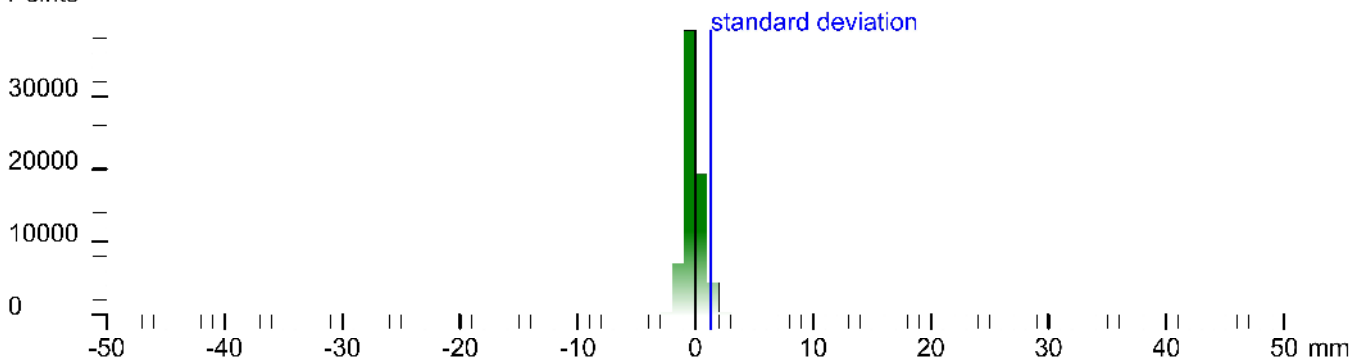
Registration matrix:

```
-0.325956 -0.945382 -0.002591 -14.0907 m
0.945386 -0.325954 -0.000627 -0.7383 m
-0.000252 -0.002655 0.999996 3.8752 m
0.000000 0.000000 0.000000 1.0000
```

Result registration cloud to cloud standard deviation: 1.3 mm

Deviation histogram

Points



Scan '17'

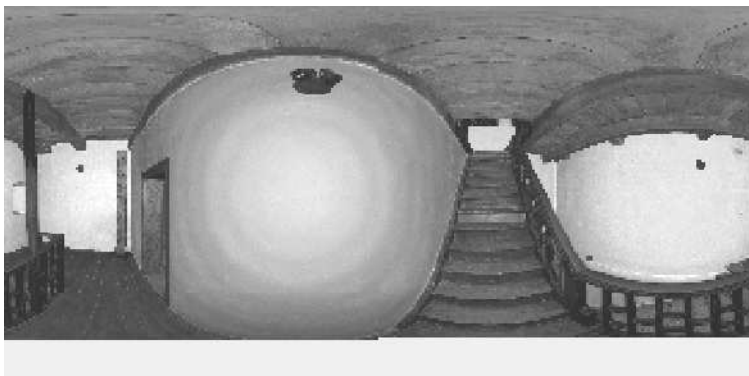
Scanner 'Z+F IMAGER 5016' serial number '5016-0100' Firmware 9.0.3.6562-0

Scan resolution 'High' quality 'Normal'

Metadata	Value
comment	
operator	

```
Sensor: 3096 * barometric transition rotation *
Sensor: 3096 * barometric transition rotation *
Barometer: 0.998741 bar * 21.434 m
nav translation: -1.18 / 9 m 3.71 / 1 m 12 * 6126 m accuracies: 8.0549 m 8.0549 m 0.0000 m
nav rotation: 0.0000 0.0000 296.0958 accuracies: 0.0000 0.0000 15.0000
up/down: no
Initial pre position: (0/door)
0.421 -0.906 0.000 -13.672
0.906 0.424 0.000 20.344
0.000 0.000 1.000 -4.012
0.000 0.000 0.000 1.000
```

Level system info: dynamic compensator available.



Scan position '18'

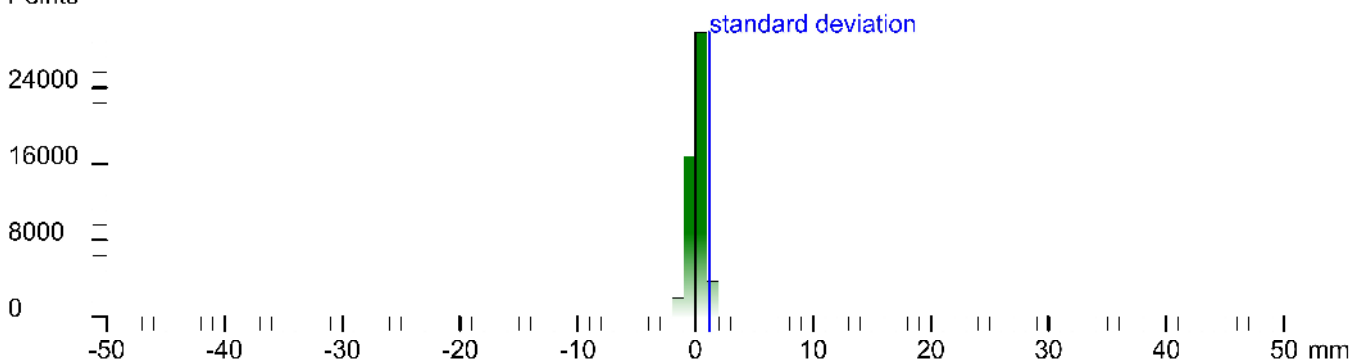
Scan position is member of group(s):
 Status registration '[102h] registered with cloud to cloud'
 Registration matrix:

```
-0.682487  0.730897  -0.001663  -12.9790 m
-0.730897  -0.682489  -0.000578  -1.4746 m
-0.001558  0.000822  0.999998  4.8899 m
0.000000  0.000000  0.000000  1.0000
```

Result registration cloud to cloud standard deviation: 1.2 mm

Deviation histogram

Points



Scan '18'

Scanner 'Z+F IMAGER 5016' serial number '5016-0100' Firmware 9.0.3.6562-0
 Scan resolution 'High' quality 'Normal'

Metadata	Value
comment	
operator	

Scan position: '18' - name: '18' - number: '18' - type: 'Cloud to cloud' - status: 'Registered with cloud to cloud' - registration matrix: 'Result registration cloud to cloud standard deviation: 1.2 mm' - scan resolution: 'High' - quality: 'Normal' - sensor: 'Z+F IMAGER 5016' - serial number: '5016-0100' - firmware: '9.0.3.6562-0' - scan resolution: 'High' - quality: 'Normal'

Sensors: 3096 * barometer (transition rotation)
 Barometer: 0.998846 bar / 22.20° m
 nav translation: -5.9165 m -3.4065 m 122.3513 m accuracies: 8.5329 m 8.5329 m 0.0000 m
 nav rotation: 0.0000 0.0000 1.8473 accuracies: 0.0000 0.0000 15.0000
 up/down: no
 Initial pre position: (Girdoor)
 -3.980 0 1/2 0.000 -19.589
 -3.142 -0.980 0.000 16.937
 0.000 0.000 1.000 -3.300
 0.000 0.000 0.000 1.000

Level system info: dynamic compensator available.



Scan position '19'

Scan position is member of group(s):

Status registration '[102h] registered with cloud to cloud'

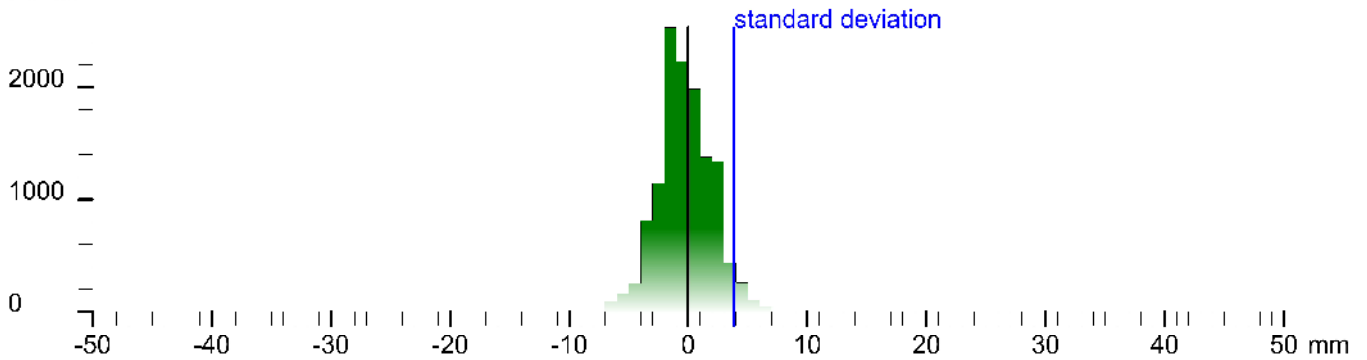
Registration matrix:

```
-0.630620  0.776090  -0.002086  -11.9611 m  
-0.776090  -0.630623  -0.000504  -2.2247 m  
-0.001708  0.001302  0.999997  6.1434 m  
0.000000  0.000000  0.000000  1.0000
```

Result registration cloud to cloud standard deviation:3.9 mm

Deviation histogram

Points



Scan '19'

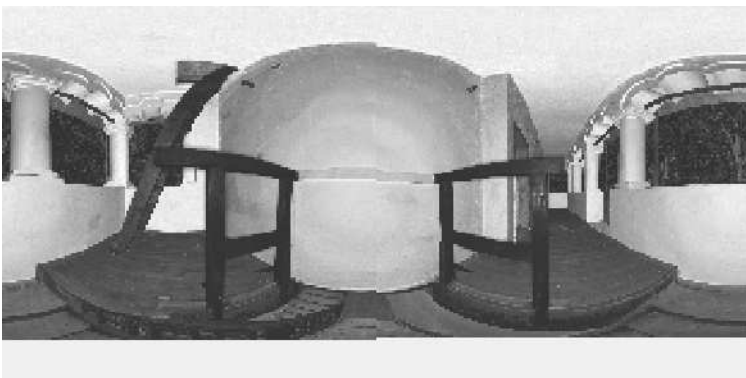
Scanner 'Z+F IMAGER 5016' serial number '5016-0100' Firmware 9.0.3.6562-0

Scan resolution 'High' quality 'Normal'

Metadata	Value
comment	
operator	

```
Scan position: '19' - name: '19' - status: '102h' - cloud to cloud standard deviation: 3.9 mm - scan resolution: 'High' - quality: 'Normal' - sensor: 'Z+F IMAGER 5016' - serial number: '5016-0100' - firmware: '9.0.3.6562-0' - scan resolution: 'High' - quality: 'Normal' - comment: '' - operator: ''  
Sensor  
sensors: 3096 *barometer (transition rotation)  
Barometer: 0.998553 bar *23.076 m  
nav translation: -2.1731 m -1.9188 m 123.0781 m accuracies: 0.5278 m 0.5278 m 0.0000 m  
nav rotation: 0.0000 0.0000 *68.7391 accuracies: 0.0000 0.0000 1s.0000  
upside-down: no  
Initial pre position: (Girdoor)  
-3.981 0.195 0.000 -21.762  
-0.195 -0.981 0.000 1s.119  
0.000 0.000 1.000 -2.576  
0.000 0.000 0.000 1.000
```

Level system info: dynamic compensator available.



Scan position '2'

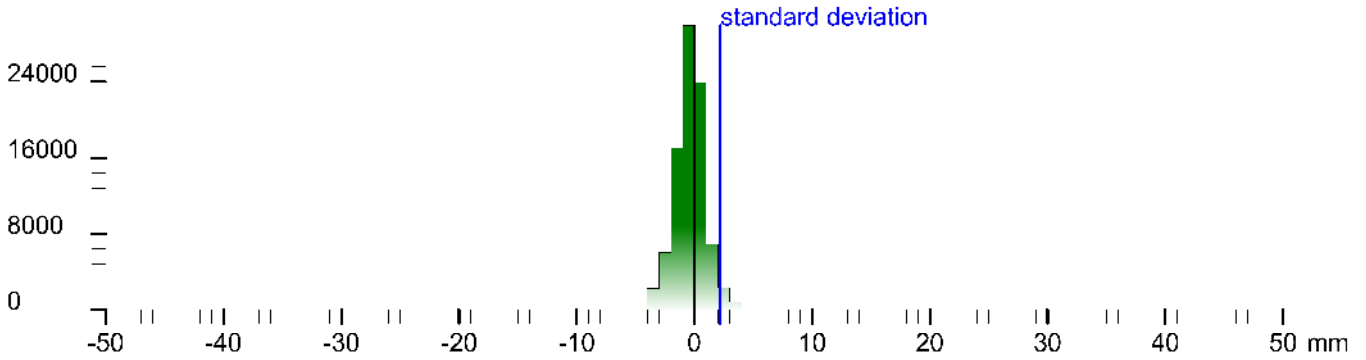
Scan position is member of group(s):
Status registration '[102h] registered with cloud to cloud'
Registration matrix:

```
-0.077067  0.997026  -0.001120  -9.8856 m  
-0.997026  -0.077069  -0.000634  1.7327 m  
-0.000718  0.001068  0.999999  0.5806 m  
0.000000  0.000000  0.000000  1.0000
```

Result registration cloud to cloud standard deviation: 2.2 mm

Deviation histogram

Points



Scan '2'

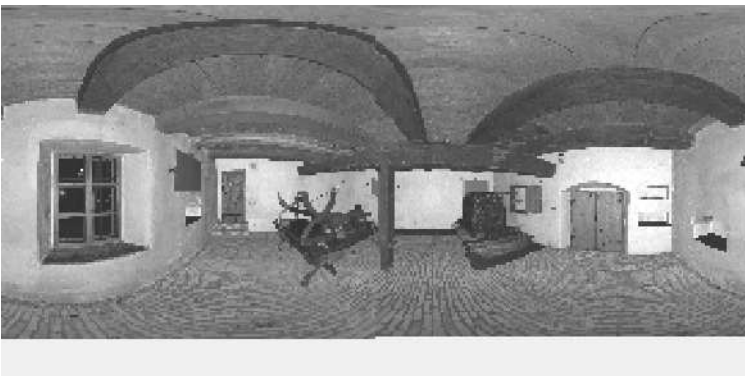
Scanner 'Z+F IMAGER 5016' serial number '5016-0100' Firmware 9.0.3.6562-0
Scan resolution 'High' quality 'Normal'

Metadata **Value**
comment
operator

Scan command: 'cd "/>Sensor

sensors: 3096 'barometric transition rotation'
Barometer: 0.998317 bar / 25.062 m
nav translation: 0.5111 m -1.5784 m 125.0531 m accuracies: 5.9513 m 5.9513 m 0.0000 m
nav rotation: 0.0000 0.0000 0.0000 accuracies: 0.0000 0.0000 15.0000
upside-down: no
fill all pre position: (4.1 m)
1.000 0.000 0.000 0.000
0.000 1.000 0.000 0.000
0.000 0.000 1.000 0.000
0.000 0.000 0.000 1.000

Level system info: dynamic compensator available.



Scan position '20'

Scan position is member of group(s):
Status registration '[23h] preregistered'
Registration matrix:

1.000000	0.000000	0.000000	0.0000 m
0.000000	1.000000	0.000000	0.0000 m
0.000000	0.000000	1.000000	0.0000 m
0.000000	0.000000	0.000000	1.0000

Scan '20'

Scanner 'Z+F IMAGER 5016' serial number '5016-0100' Firmware 9.0.3.6562-0
Scan resolution 'High' quality 'Normal'

Metadata **Value**
comment
operator

Sensor: 3100 * barometric transition rotation gps
Barometer: 0.999193 bar ~17.888 m
nav translation: 4.7418 m 0.6781 m 117.2847 m accuracies: 9.3157 m 9.3157 m 0.0000 m
nav rotation: 0.00000 0.00000 44.7897 accuracies: 0.00000 0.00000 0.00000
upside-down: no
GPS lat:44.370981 long:23.421379 satellites:4 height:196.6m hdop:3.9 vdcpx:6.2m hacc: 2.0m vacc:14.0 tags:G3 'stand alone 3D solution'
north:4915860.948 m east:692921.587 m zero:34T
Initial pre position (3coo_tcoor)
0.710 0.704 0.000 ~ 7.02C
-0.70 - 0.710 0.000 21.697
0.000 0.000 1.000 -5.370
0.000 0.000 0.000 1.000

Level system info: dynamic compensator available.



Scan position '21'

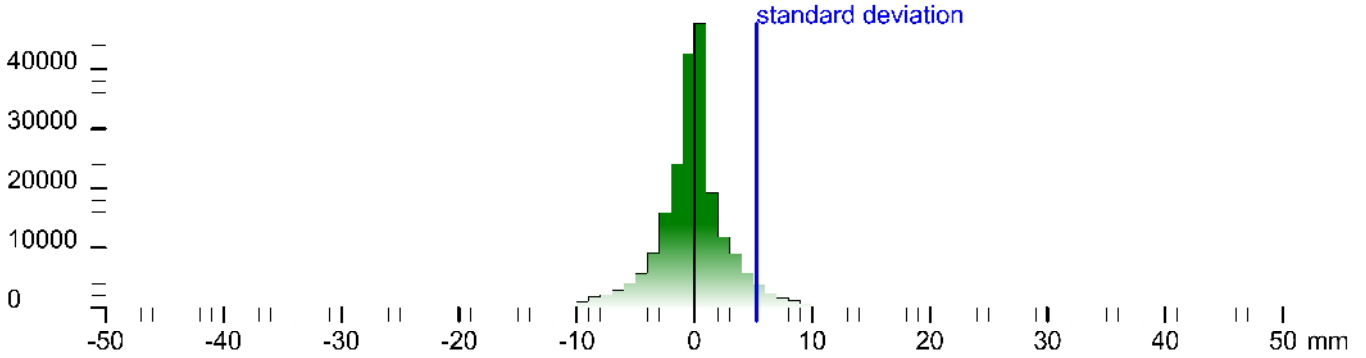
Scan position is member of group(s):
 Status registration '[102h] registered with cloud to cloud'
 Registration matrix:

-0.322325	-0.946627	-0.002211	-8.5547 m
0.946629	-0.322325	-0.000138	-11.7473 m
-0.000583	-0.002138	0.999998	0.3870 m
0.000000	0.000000	0.000000	1.0000

Result registration cloud to cloud standard deviation: 5.3 mm

Deviation histogram

Points



Scan '21'

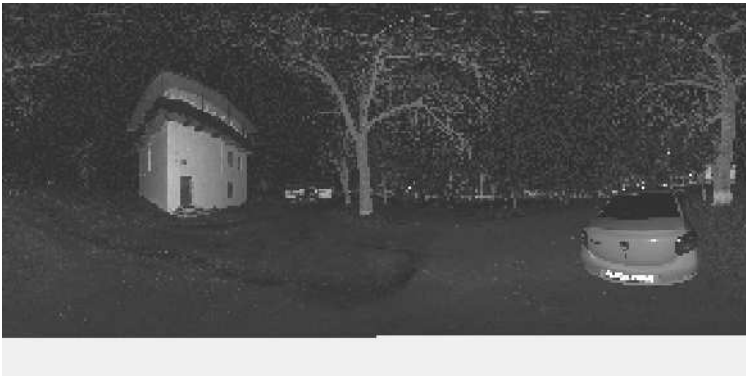
Scanner 'Z+F IMAGER 5016' serial number '5016-0100' Firmware 9.0.3.6562-0
 Scan resolution 'High' quality 'Normal'

Metadata **Value**
comment
operator

```

Scan position: '1403h' in group: '1403h' scan position: '1403h'
Sensor
sensors: 3100 * barometer transition rotation gps
Barometer: 0.999116 bar 118.338 m
nav translation: -5.1784 m 21.7855 m 17.7620 m accuracies: 17.8317 m 17.8014 m 0.3003 m
nav rotation: 0.0000 0.0000 292.6263 accuracies: 0.0000 0.0000 1s.0000
upside-down: no
GPS: lat: 44.370312 long: 23.421192 satellites: 6 height: 107.4 m hdop: 2.5 vdos: 2.0 m htacc: 0.2 m vdrms: 12.0 tags: G3 'stand alone 3D solution'
ortho: 4915884.899 m east: 692906.857 m zcra: 34T
Initial pre position (3-coor):
0.385 -0.993 0.000 -73.198
0.923 0.305 0.000 48.32
0.000 0.000 1.000 -7.892
0.000 0.000 0.000 1.000
    
```

Level system info: dynamic compensator available.



Scan position '23'

Scan position is member of group(s):

Status registration '[102h] registered with cloud to cloud'

Registration matrix:

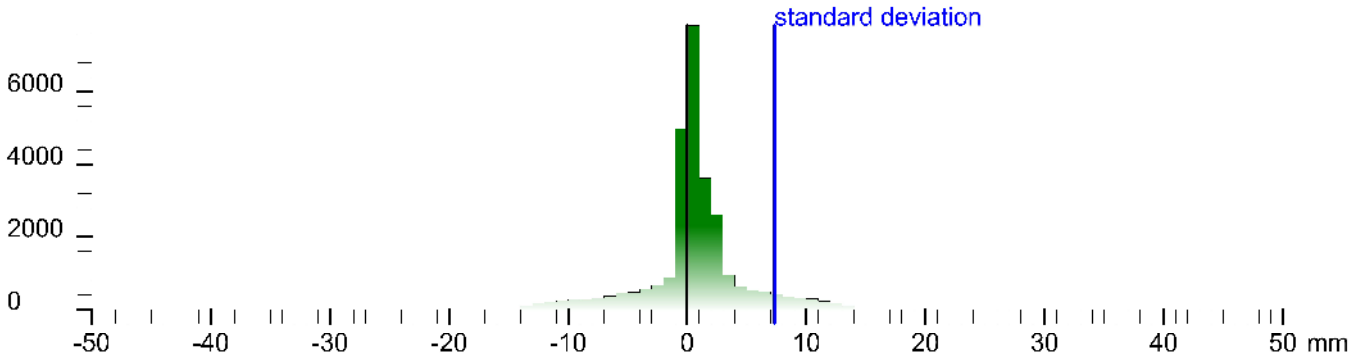
```

0.817708  0.575632 -0.001102 -17.5619 m
-0.575633 0.817709  0.000573  12.5207 m
0.001232  0.000166  1.000000  0.4285 m
0.000000  0.000000  0.000000  1.0000
  
```

Result registration cloud to cloud standard deviation: 7.3 mm

Deviation histogram

Points



Scan '23'

Scanner 'Z+F IMAGER 5016' serial number '5016-0100' Firmware 9.0.3.6562-0

Scan resolution 'High' quality 'Normal'

Metadata	Value
comment	
operator	

Scan position: '23' in group(s): '23' status: '102h' registered with cloud to cloud
 Sensor
 sensors: 3100 * barometric transition rotation gps
 Barometer: 0.999081 bar 18.634 m
 nav translation: 2.9676 m 23.4747 m 11.85339 m accuracies: 17.1241 m 7.1214 m 0.0000 m
 nav rotation: 0.0000 0.0000 19.3116 accuracies: 0.0000 0.0000 15.0000
 upside-down: no
 GPS: lat: 44.370495 long: 23.421324 satellites: 8 height: 180.3m hddop: 1.6 vddop: 1.6m hacc: 7.4m vacc: 6.6 flags: G3 stand alone 3D solution
 north: 4915875.648 m east: 6829576.738 m zone: 34T
 Initial pre position (3-coo. coord)
 0.85 0.983 0.000 2.833
 -0.983 0.185 0.000 50.322
 0.000 0.000 1.000 -8.014
 0.000 0.000 0.000 1.000

Level system info: dynamic compensator available.



Scan position '24'

Scan position is member of group(s):

Status registration '[102h] registered with cloud to cloud'

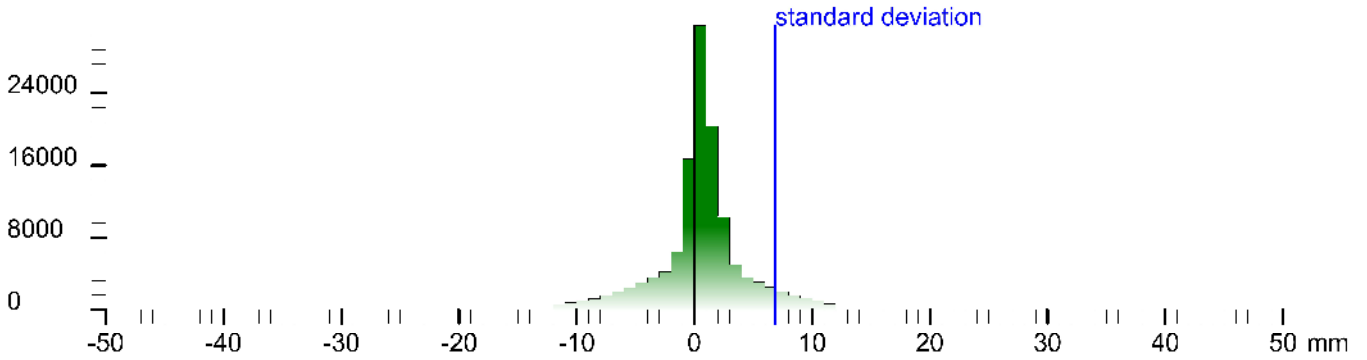
Registration matrix:

```
-0.686848  0.726800 -0.001372 -5.6115 m
-0.726799 -0.686850 -0.000368  10.6008 m
-0.001210  0.000745  0.999999  0.0912 m
0.000000  0.000000  0.000000  1.0000
```

Result registration cloud to cloud standard deviation:6.9 mm

Deviation histogram

Points



Scan '24'

Scanner 'Z+F IMAGER 5016' serial number '5016-0100' Firmware 9.0.3.6562-0

Scan resolution 'High' quality 'Normal'

Metadata	Value
comment	
operator	

```
Scan ID: 102h; File: 102h; Name: 102h; Date: 2024-01-10 14:30:00; Location: 49.15967, 10.6008; Orientation: 0; Scale: 1; Status: 102h; Registration: cloud to cloud; Standard deviation: 6.9 mm; Resolution: High; Quality: Normal; Scanner: Z+F IMAGER 5016; Serial: 5016-0100; Firmware: 9.0.3.6562-0; Scan resolution: High; Quality: Normal; Comment: ; Operator: ; Sensors: 3100 * barometric transition rotation gps; Barometer: 0.999149 bar ~ 18.06 m; nav translation: 12.4808 m ~ 1.3777 m ~ 17.5421 m accuracies: 13.6745 m 13.6745 m 0.0000 m; nav rotation: 0.0000 0.0000 ~ 3.0129 accuracies: 0.0000 0.0000 1s.0000; upside-down: no; GPS: lat:44.370422 long:23.421415 satellites:7 height:181.9m hddos:.1 vdcpc:1.7m hacc:4.8-m vaccc:6.4 flags:G3 'stand alone 3D solution'; north:4915967.813 m east:692921.271 m zcra:34T; Initial pre position (3-coo. tooor); -0.9993 0 1?? 0.000 4.657; -0.122 -0.063 0.000 42.428; 0.000 0.000 1.000 ~ 3.005; 0.000 0.000 0.000 1.000
```

Level system info: dynamic compensator available.



Scan position '25'

Scan position is member of group(s):

Status registration '[102h] registered with cloud to cloud'

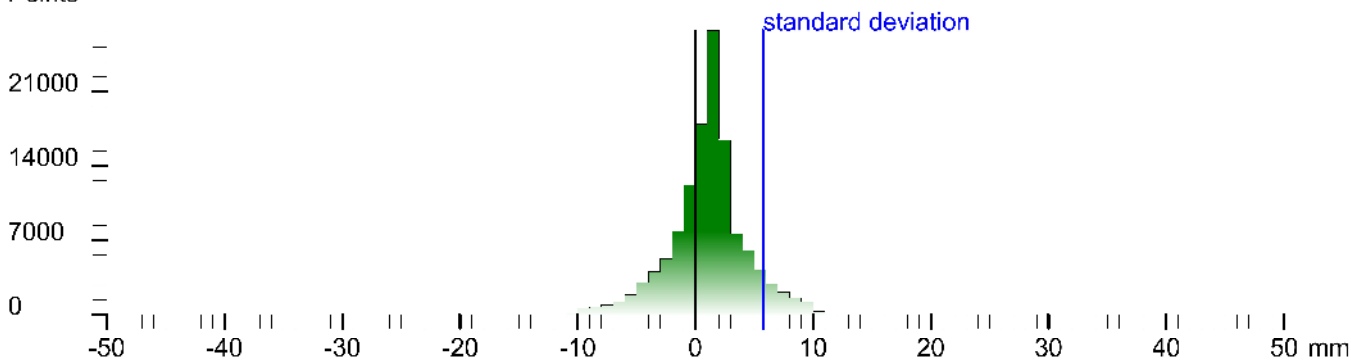
Registration matrix:

```
-0.923266 -0.384156 -0.002019 -3.1754 m  
0.384158 -0.923268 -0.000340 22.5506 m  
-0.001734 -0.001091 0.999998 -0.4493 m  
0.000000 0.000000 0.000000 1.0000
```

Result registration cloud to cloud standard deviation:5.7 mm

Deviation histogram

Points



Scan '25'

Scanner 'Z+F IMAGER 5016' serial number '5016-0100' Firmware 9.0.3.6562-0

Scan resolution 'High' quality 'Normal'

Metadata Value comment operator

```
Scan position: '14.370464' longitude: '14.370464' latitude: '52.421520' altitude: '181.9m' sensor: 'Z+F IMAGER 5016' registration: 'cloud to cloud' standard deviation: '5.7' scan resolution: 'High' quality: 'Normal' comment: '' operator: ''  
Sensor  
sensors: 3100 *barometric transition rotation gps  
Barometer: 0.999116 bar 118.332 m  
nav translation: 3.6715 m -7.0879 m 117.9101 m accuracies: 8.1834 m 8.1834 m 0.0000 m  
nav rotation: 0.0000 0.0000 244.7159 accuracies: 0.0000 0.0000 15.0000  
upside-down: no  
GPS lat:14.370464 long:23.421520 satellites:9 height:181.9m hddos:'.5 vddcp:1.4m hacc:8.9m vacc:6.7 flags:G3 'stand alone 3D solution'  
north:4915872.721 m east:692932.491 m zone:34T  
Initial pre position (3-coo. tocoo):  
-0.427 -0.804 0.000 12.885  
0.904 -0.427 0.000 47.340  
0.000 0.000 1.000 -8.631  
0.000 0.000 0.000 1.000
```

Level system info: dynamic compensator available.



Scan position '26'

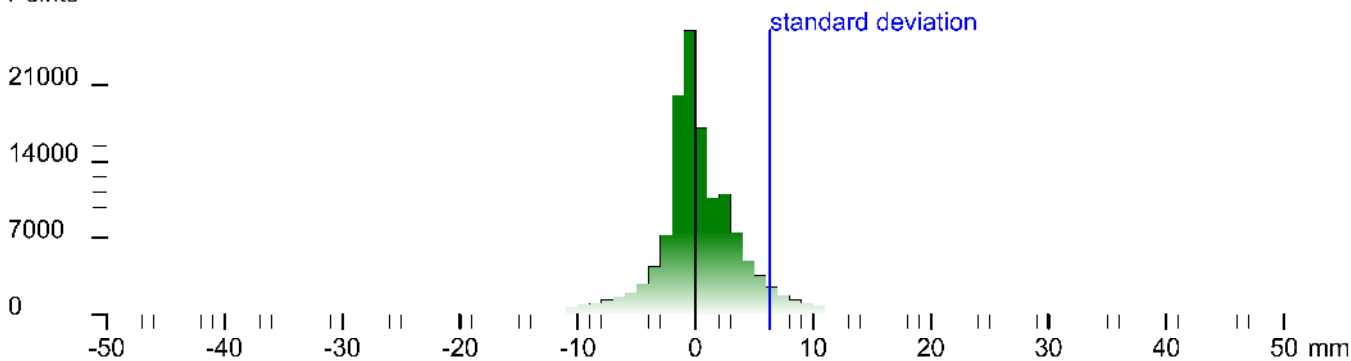
Scan position is member of group(s):
Status registration '[102h] registered with cloud to cloud'
Registration matrix:

```
-0.616036 -0.787715 -0.002329 7.2044 m  
0.787717 -0.616038 -0.000018 17.8493 m  
-0.001422 -0.001846 0.999998 -0.0935 m  
0.000000 0.000000 0.000000 1.0000
```

Result registration cloud to cloud standard deviation:6.3 mm

Deviation histogram

Points



Scan '26'

Scanner 'Z+F IMAGER 5016' serial number '5016-0100' Firmware 9.0.3.6562-0
Scan resolution 'High' quality 'Normal'

Metadata **Value**
comment
operator

```
Scan position: '26' - name: '26' - x: 14.129 - y: 29.26 - z: 118.3978 m - alt: 18.692 m - roll: 0.0000 - pitch: 0.0000 - yaw: 0.0000  
Sensor  
sensors: 3100 * barometric transition rotation gps  
Barometer: 0.999074 bar ~ 18.692 m  
nav translation: -10.9501 m -2.7792 m 118.3978 m accuracies: 0.7830 m 10.7830 m 0.0001 m  
nav rotation: 0.0000 0.0000 2/4.633 / accuracies: 0.0000 0.0000 15.0000  
upside-down: no  
GPS lat: 44.370384 long: 23.421570 satellites: 9 height: 183.4 m hdop: 0.0 vdcpl: 1.5 m hacc: 4.8 m vaccl: 6.1 flags: G3 'stand alone 3D solution'  
north: 4915963.862 m east: 692937.166 m zone: 34T  
Initial pre position (3-coo. tocoor):  
0.081 -0.997 0.000 7.848  
0.997 0.001 0.000 38.593  
0.000 0.000 1.000 -2.150  
0.000 0.000 0.000 1.000
```

Level system info: dynamic compensator available.



Scan position '27'

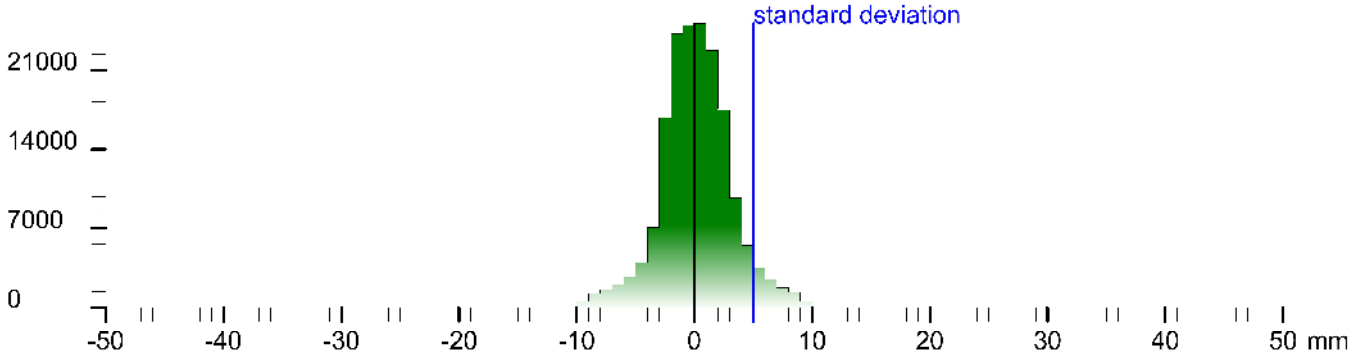
Scan position is member of group(s):
Status registration '[102h] registered with cloud to cloud'
Registration matrix:

-0.120900	-0.992664	-0.001398	12.1577 m
0.992665	-0.120901	0.000196	5.5935 m
-0.000364	-0.001364	0.999999	-0.1687 m
0.000000	0.000000	0.000000	1.0000

Result registration cloud to cloud standard deviation:5.0 mm

Deviation histogram

Points



Scan '27'

Scanner 'Z+F IMAGER 5016' serial number '5016-0100' Firmware 9.0.3.6562-0
Scan resolution 'High' quality 'Normal'

Metadata	Value
comment	
operator	

```
Scan position: '143' scan: '303' name: '143-27' scan: '27' type: 'Cloud to cloud' sensor: 'Z+F IMAGER 5016' quality: 'High' resolution: 'Normal' scan: '5016-0100' firmware: '9.0.3.6562-0' scan resolution: 'High' quality: 'Normal' comment: '' operator: ''  
Sensor  
sensors: 3100 * barometric transition rotation gps  
Barometer: 0.999053 bar: 18.865 m  
nav translation: -12.7200 m 3.1791 m 1.8411 m accuracies: 11.7/28 m 11.7428 m 0.0004 m  
nav rotation: 0.0000 0.0000 0.0000 0.0000 0.0000 0.0000 0.0000 15.0000  
upside-down: no  
GPS lat: 44.370274 long: 23.421515 satellites: 7 height: 179.7m hddos: .6 vdcop: 2.1m hacc: 5.3 m vacc: 6.6 flags: G3 'stand alone 3D solution'  
north: 4915851.521 m east: 692932.662 m zone: 34T  
Initial pre position (3-coor):  
0.678 -0.778 0.000 3.111  
0.778 0.828 0.000 28.224  
0.000 0.000 1.000 -8.136  
0.000 0.000 0.000 1.000
```

Level system info: dynamic compensator available.



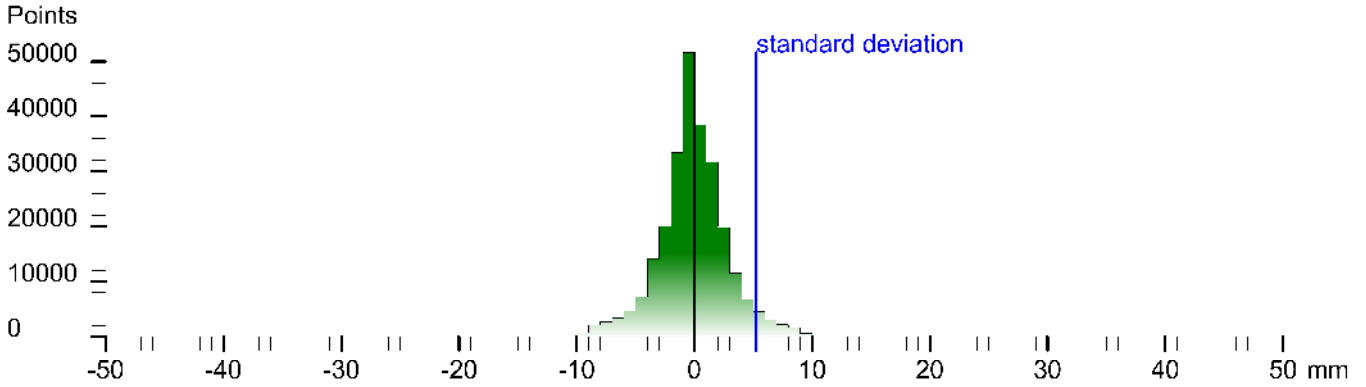
Scan position '28'

Scan position is member of group(s):
 Status registration '[102h] registered with cloud to cloud'
 Registration matrix:

```
-0.997870 -0.065221 -0.001050  8.0650 m
 0.065221 -0.997871 -0.000128 -3.2416 m
-0.001039 -0.000196  0.999999 -0.1463 m
 0.000000  0.000000  0.000000  1.0000
```

Result registration cloud to cloud standard deviation:5.3 mm

Deviation histogram



Scan '28'

Scanner 'Z+F IMAGER 5016' serial number '5016-0100' Firmware 9.0.3.6562-0
 Scan resolution 'High' quality 'Normal'

Metadata **Value**
comment
operator

```
Scan position: '144.370251' longitude: '23.421406' latitude: '49.158187' altitude: '23.421406' scan: 'C:\Users\operator\Documents\Cloud\Scan\28' scan: 'Z+F IMAGER 5016' serial number: '5016-0100' firmware: '9.0.3.6562-0' scan resolution: 'High' quality: 'Normal'
Sensor
sensors: 3100 * barometer transition rotation gps
Barometer: 0.999012 bar: 19.275 m
nav translation: -5.7185 m -1.1868 m 1 8.4234 m accuracies: 8.6890 m 8.6890 m 0.0000 m
nav rotation: 0.0000 0.0000 223.137 1 accuracies: 0.0000 0.0000 15.0000
upside-down: no
GPS lat: 44.370251 long: 23.421406 satellites: 7 height: 178.3m hddos: 1 vdcpl: 1.6m hacc: 6.1m vacc: 11.0 tags: G3 'stand alone 3D solution'
ortho: 4915818.723 m east: 692921.075 m zcra: 34T
Initial pre position (3-coo, t-coor):
-0.730 -0.684 0.000 4.537
0.864 -0.730 0.000 23.412
0.000 0.000 1.000 -8.124
0.000 0.000 0.000 1.000
```

Level system info: dynamic compensator available.



Scan position '29'

Scan position is member of group(s):

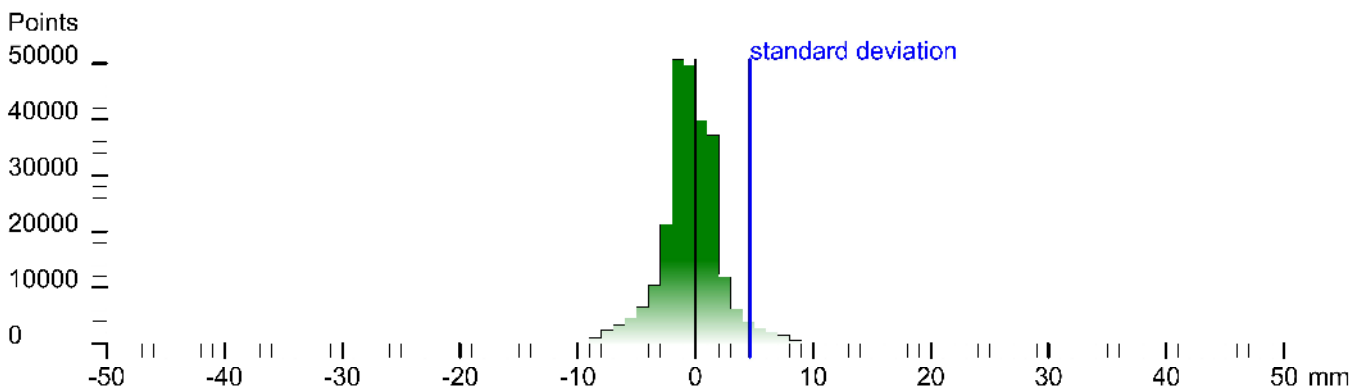
Status registration '[102h] registered with cloud to cloud'

Registration matrix:

```
-0.774983 -0.631979 -0.001842 -1.4361 m
 0.631980 -0.774984 -0.000096 -16.8963 m
-0.001366 -0.001239 0.999998  0.3462 m
 0.000000 0.000000 0.000000  1.0000
```

Result registration cloud to cloud standard deviation: 4.6 mm

Deviation histogram



Scan '29'

Scanner 'Z+F IMAGER 5016' serial number '5016-0100' Firmware 9.0.3.6562-0

Scan resolution 'High' quality 'Normal'

Metadata **Value**
comment
operator

Scan position: '44-19.066800 13.031779' name: '148-29' status: '25' type: 'Cloud to cloud' sensor: 'Z+F Imager 5016' registration: 'Cloud to cloud' registration matrix: 'Cloud to cloud' standard deviation: '4.6' comment: 'Scan position is member of group(s): [102h] registered with cloud to cloud' quality: 'High' resolution: 'Normal' scan resolution: 'High' quality: 'Normal' scan resolution: 'High' quality: 'Normal'

```
Sensor
sensors: 3100 * barometric transition rotation gps
Barometer: 0.998915 bar 20.03 m
nav translation: -15.4731 m -3.5229 m 119.3017 m accuracies: 3.0183 m 13.0465 m 0.0001 m
nav rotation: 0.0000 0.0000 260.5676 accuracies: 0.0000 0.0000 15.0000
upside-down: no
GPS lat: 44.370220 long: 23.421181 satellites: 9 height: 106.3 m hdop: 0.9 vdop: 1.7 m hsrcc: 4.4 m vrcc: 8.3 flags: G3's anc store 3D solution!
north: 4915814.803 m east: 692906.213 m zone: 34T
Initial pre position (3-coo, tocoo):
-0.166 -0.885 0.000 -13.373
0.958 -0.144 0.000 -3.433
0.000 0.000 1.000 -5.186
0.000 0.000 0.000 1.000
```

Level system info: dynamic compensator available.



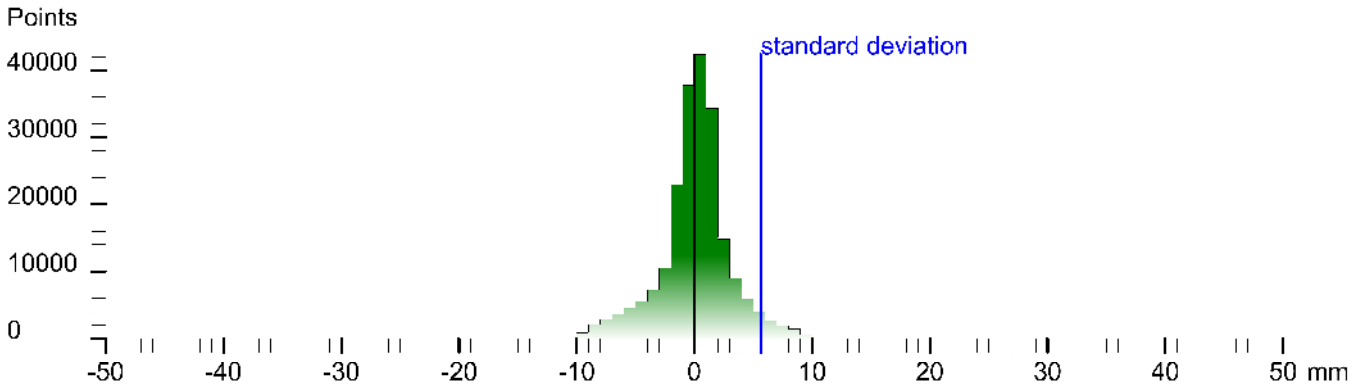
Scan position '30'

Scan position is member of group(s):
Status registration '[102h] registered with cloud to cloud'
Registration matrix:

```
0.156954 -0.987604 -0.002075 -26.3827 m
0.987606 0.156954 0.000381 -15.6261 m
-0.000051 -0.002110 0.999998 3.3958 m
0.000000 0.000000 0.000000 1.0000
```

Result registration cloud to cloud standard deviation:5.6 mm

Deviation histogram



Scan '30'

Scanner 'Z+F IMAGER 5016' serial number '5016-0100' Firmware 9.0.3.6562-0
Scan resolution 'High' quality 'Normal'

Metadata **Value**
comment
operator

```
Scan position: '30' member of group(s): '30' status: '102h' registered with cloud to cloud  
Sensor  
sensors: 3100 *barometer transition rotation gps  
Barometer: 0.998524 bar *23.322 m  
nav translation: -52.2758 m *1.8372 m *22.78 *7 m accuracies: 22.3974 m 22.3974 m 0.0003 m  
nav rotation: 0.0000 0.0000 0.0000 0.0000 0.0000 0.0000 0.0000 0.0000 0.0000 0.0000  
upside-down: no  
GPS lat:44.370382 long:23.420986 satellites:9 height:185.1m hhdop:0.0 vhdop:1.8m hacc:4.6 m vacc:6.7 flags:G3 'stand alone 3D solution'  
north:4915963 / 12 m east:692883.178 m zone:34T  
Initial pre position (300, tocoor)  
0.870 -0.572 0.000 -28.425  
0.572 0.820 0.000 38.085  
0.000 0.000 1.000 -1.756  
0.000 0.000 0.000 1.000
```

Level system info: dynamic compensator available.



Scan position '31'

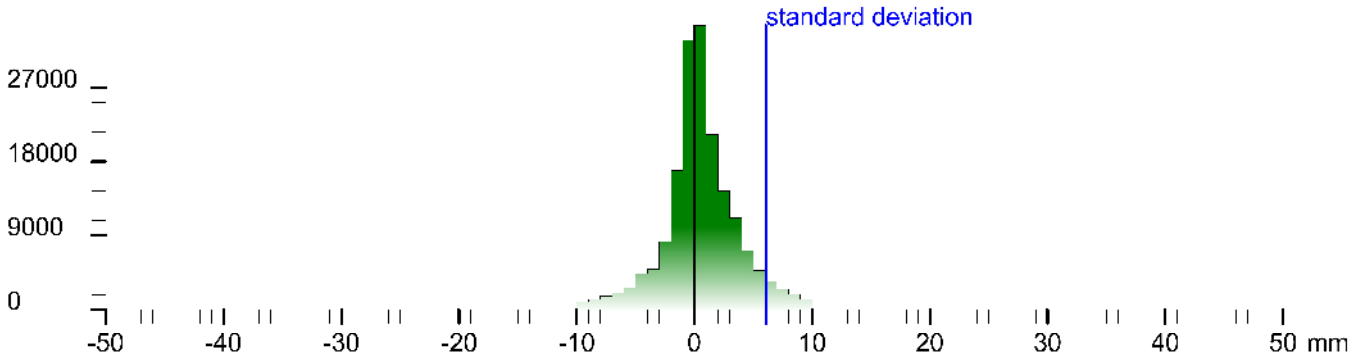
Scan position is member of group(s):
Status registration '[102h] registered with cloud to cloud'
Registration matrix:

```
0.185313 -0.982677 -0.002078 -32.3523 m
0.982679 0.185313 0.000393 -16.8114 m
-0.000002 -0.002116 0.999998 3.9742 m
0.000000 0.000000 0.000000 1.0000
```

Result registration cloud to cloud standard deviation:6.1 mm

Deviation histogram

Points



Scan '31'

Scanner 'Z+F IMAGER 5016' serial number '5016-0100' Firmware 9.0.3.6562-0
Scan resolution 'High' quality 'Normal'

Metadata Value

comment	operator
---------	----------

```
Scan ID: 144370411 | Date: 2023-10-11 14:51:51 | Station: 3 | Type: Cloud to cloud | Status: Registered with cloud to cloud | Registration matrix: 0.185313 -0.982677 -0.002078 -32.3523 m | 0.982679 0.185313 0.000393 -16.8114 m | -0.000002 -0.002116 0.999998 3.9742 m | 0.000000 0.000000 0.000000 1.0000
Sensor
sensors: 3100 * barometer transition rotation gps
Barometer: 0.998476 bar / 23.727 m
nav translation: -1.7718 m 6.2788 m 123.1420 m accuracies: 9.3585 m 9.3585 m 0.0002 m
nav rotation: 0.0000 0.0000 0.0000 0.0000 0.0000 0.0000 0.0000 0.0000 15.0000
upside-down: no
GPS: lat:44.370411 lon:23.420927 satellites:8 height:106.5 m hdop:1.2 vdos:2.2 m hacc:5.1 m vacc:6.8 flags:G3's anc static 3D solution'
Initial pre position (3-coor):
0.637 -0.555 0.000 -34.188
0.555 0.632 0.000 40.058
0.000 0.000 1.000 -1.405
0.000 0.000 0.000 1.000
```

Level system info: dynamic compensator available.



Scan position '32'

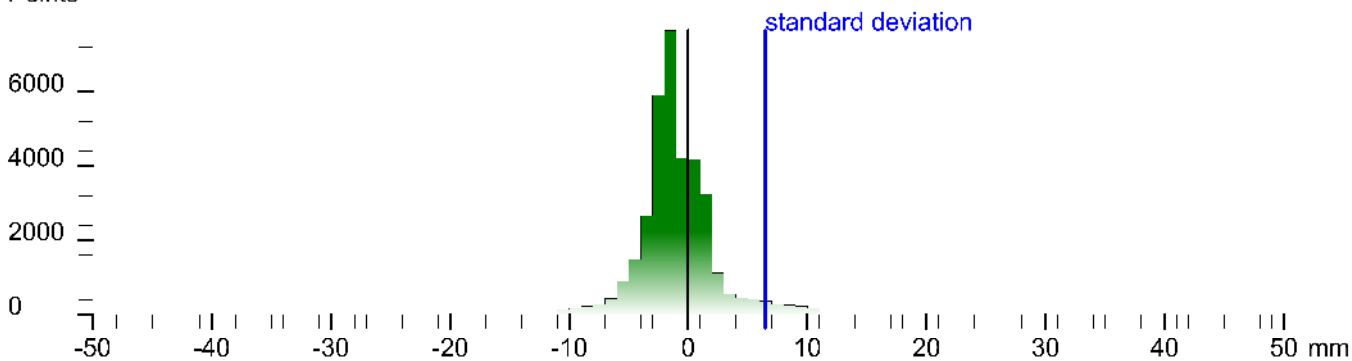
Scan position is member of group(s):
Status registration '[102h] registered with cloud to cloud'
Registration matrix:

```
0.385377 -0.922758 -0.001808 -44.0435 m  
0.922759 0.385377 0.000857 -5.9049 m  
-0.000094 -0.002000 0.999998 1.8655 m  
0.000000 0.000000 0.000000 1.0000
```

Result registration cloud to cloud standard deviation:6.5 mm

Deviation histogram

Points



Scan '32'

Scanner 'Z+F IMAGER 5016' serial number '5016-0100' Firmware 9.0.3.6562-0
Scan resolution 'High' quality 'Normal'

Metadata **Value**
comment
operator

```
Scan position: '32' - name: '14h:52:minutes:32' - type: 'Cloud to cloud' - status: 'Registered with cloud to cloud' - registration matrix: '0.385377 -0.922758 -0.001808 -44.0435 m  
0.922759 0.385377 0.000857 -5.9049 m  
-0.000094 -0.002000 0.999998 1.8655 m  
0.000000 0.000000 0.000000 1.0000'  
Sensor  
sensors: 3100 * barometric transition rotation gps  
Barometer: 0.998705 bar * 21.739 m  
nav translation: -5.7754 m 19.7772 m 12.1182 m accuracies: 16.0006 m 16.0006 m 0.0001 m  
nav rotation: 0.0000 0.0000 0.0000 0.0000 accuracies: 0.0000 0.0000 1s.0000  
upside-down: no  
GPS lat: 44.370560 long: 23.420918 satellites: 8 height: 185.0m hddo: 2 vdcp: 2.4m hacc: 4.6m vacc: 7.6 flags: G3 'stand alone 3D solution'  
north: 4915981.894 m east: 692884.156 m zone: 34T  
Initial pre position (3-coor):  
0.934 -0.357 0.000 -35.395  
0.357 0.934 0.000 56.505  
0.000 0.000 1.000 -6.428  
0.000 0.000 0.000 1.000
```

Level system info: dynamic compensator available.



Scan position '33'

Scan position is member of group(s):

Status registration '[102h] registered with cloud to cloud'

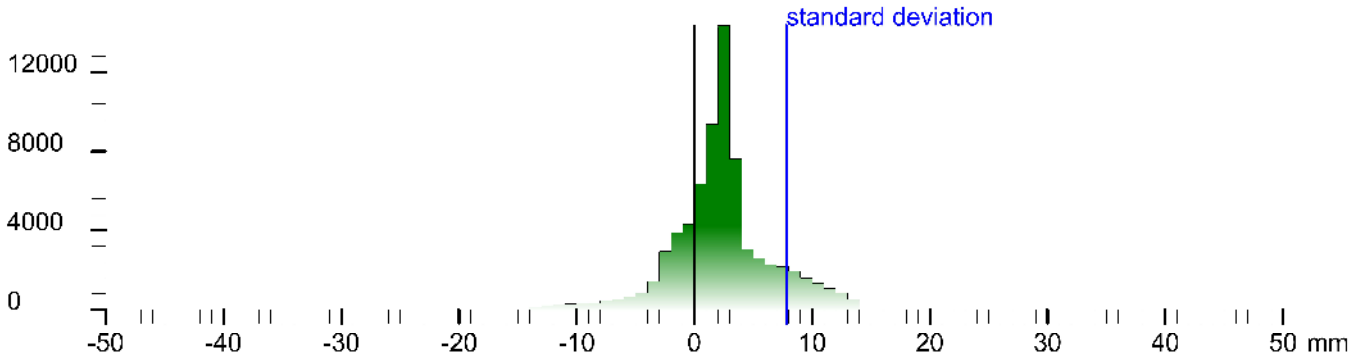
Registration matrix:

-0.992917	-0.118779	-0.002445	-23.9030 m
0.118781	-0.992921	-0.000415	27.0842 m
-0.002380	-0.000703	0.999997	-0.9395 m
0.000000	0.000000	0.000000	1.0000

Result registration cloud to cloud standard deviation: 7.8 mm

Deviation histogram

Points



Scan '33'

Scanner 'Z+F IMAGER 5016' serial number '5016-0100' Firmware 9.0.3.6562-0

Scan resolution 'High' quality 'Normal'

Metadata	Value
----------	-------

```
comment
operator
Sensor
sensors: 3100 *barometer, transition, rotation, gps
Barometer: 0.999057 bar ~18.831 m
nav translation: 57.3010 m 18.7667 m 118.2930 m accuracies: 35.8197 m 35.8197 m 0.0001 m
nav rotation: 0.0000 0.0000 227.8139 accuracies: 0.0000 0.0000 1s,0.0000
upside-down: no
GPS lat:44.370632 long:23.421306 satellites:9 height:177.1m hdop:1.1 vdcop:2.0m hacc:4.1m vacc:8.6 flags:G3 'stand alone 3D solution'
north:4915881.073 m east:692922.062 m zone:s34T
Initial pre position (3co.,3coord)
-0.677 -0.741 0.000 2.454
0.741 -0.872 0.000 65.708
0.000 0.000 1.000 -9.255
0.000 0.000 0.000 1.000
```

Level system info: dynamic compensator available.



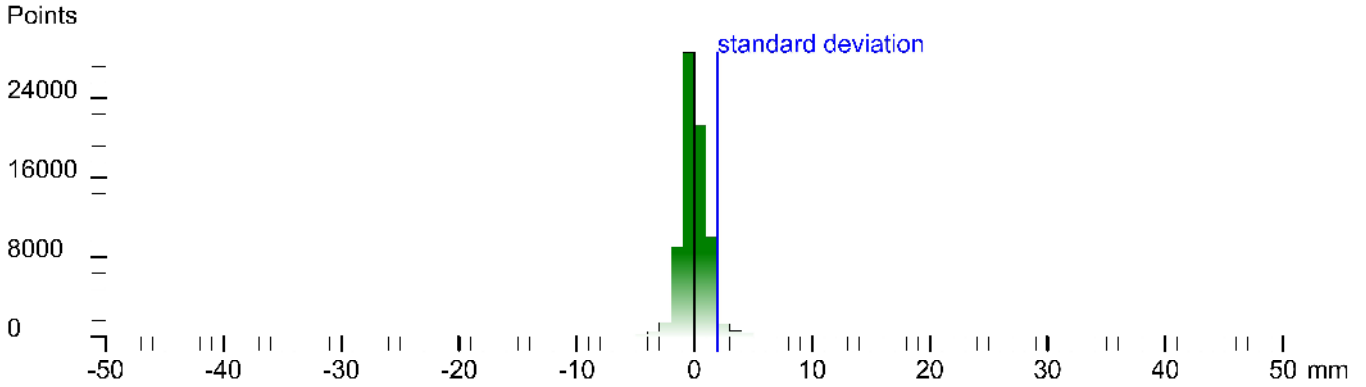
Scan position '34'

Scan position is member of group(s):
 Status registration '[102h] registered with cloud to cloud'
 Registration matrix:

```
-0.992920  0.118783  -0.001172  -10.5842 m
-0.118780  -0.992920  -0.001457  -0.5518 m
-0.001338  -0.001308  0.999998   7.0233 m
0.000000  0.000000  0.000000   1.0000
```

Result registration cloud to cloud standard deviation: 2.0 mm

Deviation histogram



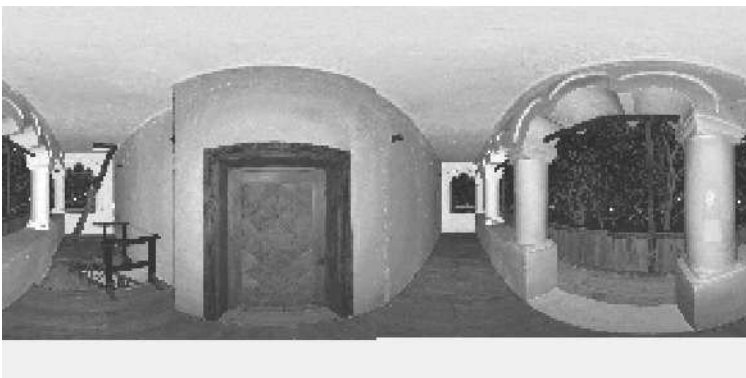
Scan '34'

Scanner 'Z+F IMAGER 5016' serial number '5016-0100' Firmware 9.0.3.6562-0
 Scan resolution 'High' quality 'Normal'

Metadata	Value
comment	
operator	

```
Scan comment: 'Z+F IMAGER 5016' serial number '5016-0100' Firmware 9.0.3.6562-0
Sensor
sensors: 3096 *barometric transition rotation*
Barometer: 0.998069 bar / 27.155 m
nav translation: -35.1190 m -34.8198 m 126.7381 m accuracies: 23.3034 m 23.3034 m 0.0000 m
nav rotation: 0.0000 0.0000 214.5700 accuracies: 0.0000 0.0000 15.0000
upside-down: no
Initial pre position (0:indoor)
-3.823 -0.567 0.000 -32.666
0.557 -0.823 0.000 30.788
0.000 0.000 1.000 -0.809
0.000 0.000 0.000 1.000
```

Level system info: no information about the level system stored in the zfs header



Scan position '35'

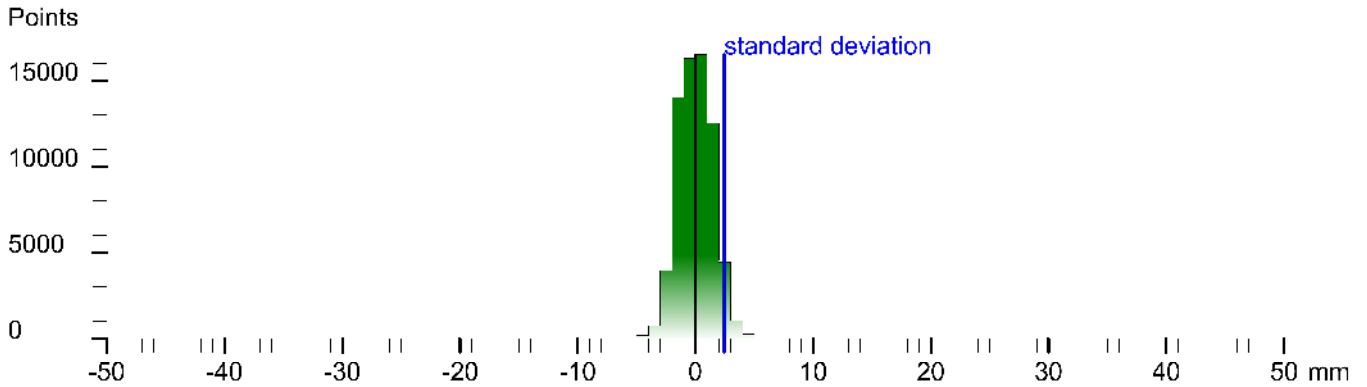
Scan position is member of group(s):
 Status registration '[102h] registered with cloud to cloud'
 Registration matrix:

```

0.763919 -0.645312 -0.001492 -8.1326 m
0.645313 0.763919 0.000980 3.2549 m
0.000508 -0.001712 0.999998 7.0186 m
0.000000 0.000000 0.000000 1.0000
  
```

Result registration cloud to cloud standard deviation:2.4 mm

Deviation histogram



Scan '35'

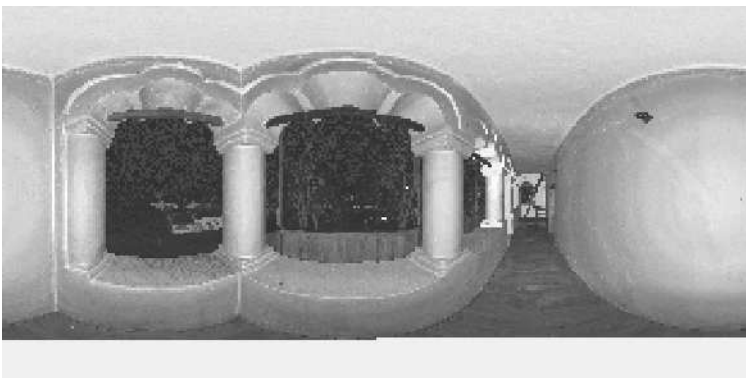
Scanner 'Z+F IMAGER 5016' serial number '5016-0100' Firmware 9.0.3.6562-0
 Scan resolution 'High' quality 'Normal'

Metadata	Value
comment	
operator	

```

Sensor
sensors: 3096 *barome or transition rotation*
Barometer: 0.998068 bar /27.167 m
nav translation: -3.1870 m 1.4537 m 126.7335 m accuracies: 5.59/5 m 5.9845 m 0.0000 m
nav rotation: 0.0000 0.0000 6.0319 accuracies: 0.0000 0.0000 1s,3000
upside-down: no
Initial pre position: (0/door)
0.991 0.105 0.000 -33.153
-0.105 0.994 0.000 -32.242
0.000 0.000 1.000 -0.764
0.000 0.000 0.000 1.000
  
```

Level system info: no information about the level system stored in the zfs header



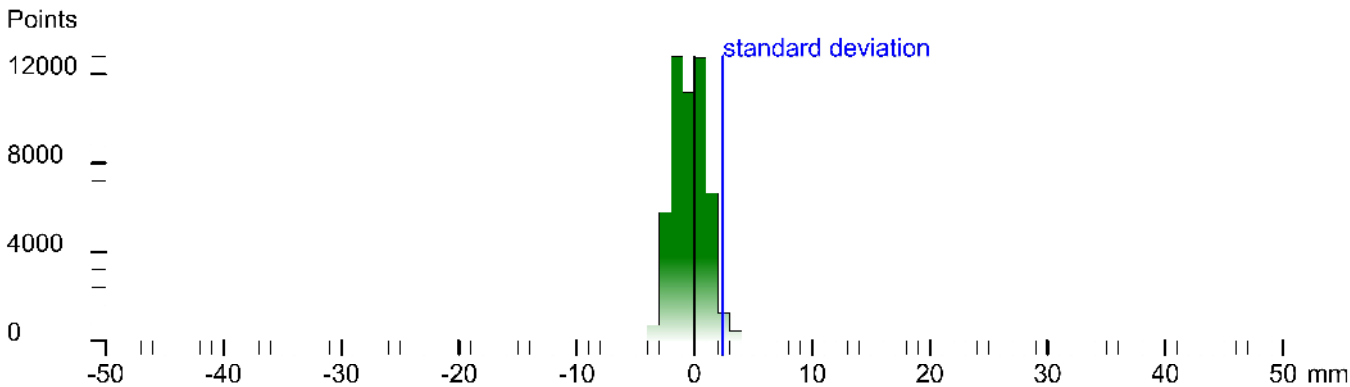
Scan position '36'

Scan position is member of group(s):
 Status registration '[102h] registered with cloud to cloud'
 Registration matrix:

-0.597894	0.801576	-0.000762	-11.3167 m
-0.801575	-0.597895	0.000361	-0.0176 m
-0.000167	0.000827	0.999999	7.0314 m
0.000000	0.000000	0.000000	1.0000

Result registration cloud to cloud standard deviation: 2.4 mm

Deviation histogram



Scan '36'

Scanner 'Z+F IMAGER 5016' serial number '5016-0100' Firmware 9.0.3.6562-0
 Scan resolution 'High' quality 'Normal'

Metadata	Value
comment	
operator	

```

Scan position: '36' - member of group(s): '102h' - registered with cloud to cloud' - status registration '[102h] registered with cloud to cloud'
Sensor
sensors: 3096 *barometric transition rotation*
Barometer: 0.998060 bar / 27.232 m
nav translation: -1.3165 m -2.3165 m 126.9410 m accuracies: 7.4847 m 7.4847 m 0.0000 m
nav rotation: 0.0000 0.0000 -0.999999 accuracies: 0.0000 0.0000 16.0000
upside-down: no
Initial position (Girdoor)
-3.983 0.182 0.000 -37.464
-0.182 -0.983 0.000 30.232
0.000 0.000 1.000 -0.607
0.000 0.000 0.000 1.000
    
```

Level system info: no information about the level system stored in the zfs header



Scan position '37'

Scan position is member of group(s):

Status registration '[102h] registered with cloud to cloud'

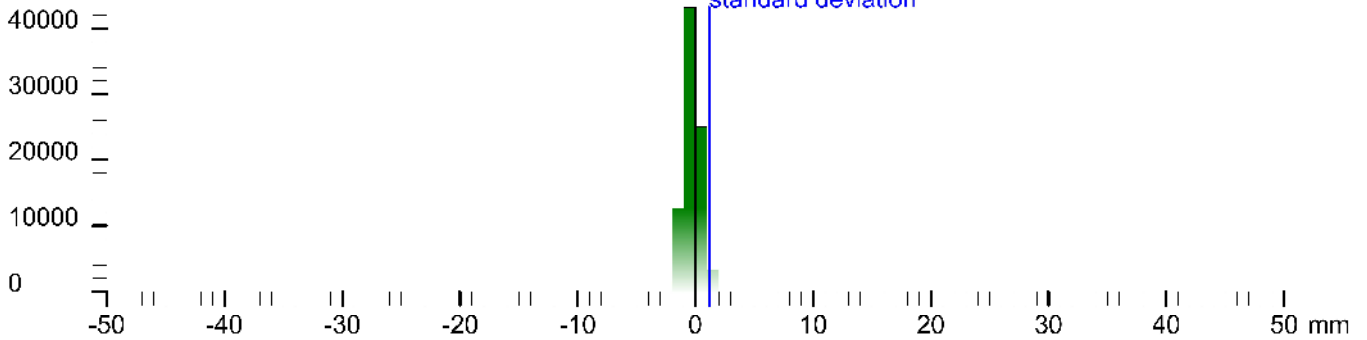
Registration matrix:

```
-0.372598 -0.927989 -0.002977 -13.7151 m
0.927993 -0.372599 0.000366 1.7629 m
-0.001449 -0.002627 0.999995 7.0358 m
0.000000 0.000000 0.000000 1.0000
```

Result registration cloud to cloud standard deviation: 1.2 mm

Deviation histogram

Points



Scan '37'

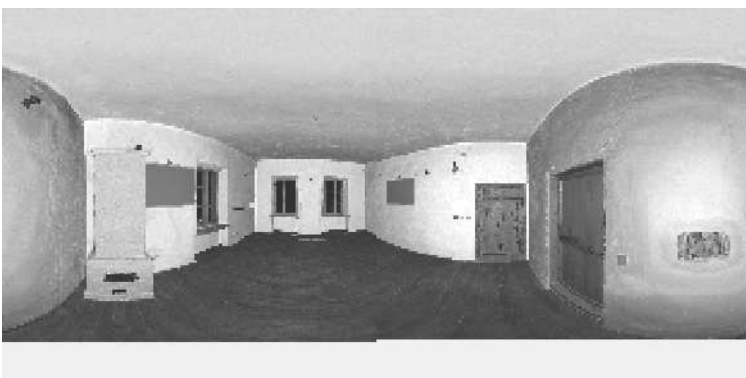
Scanner 'Z+F IMAGER 5016' serial number '5016-0100' Firmware 9.0.3.6562-0

Scan resolution 'High' quality 'Normal'

Metadata **Value**
comment
operator

```
Scan position: '37' - name: '37' - value: '37' - type: 'string' - unit: 'm' - accuracy: '0.0001' - precision: '0.0001' - range: '0.0001' - min: '0.0001' - max: '0.0001' - format: '0.0001' - display: '0.0001' - sensor: 'Z+F IMAGER 5016' - serial: '5016-0100' - firmware: '9.0.3.6562-0' - resolution: 'High' - quality: 'Normal' - comment: '' - operator: '' - sensors: '3096 *barometric transition rotation*' - barometer: '0.997993 bar *27.798 m' - nav translation: '0.3018 m 1.0358 m 126.7860 m accuracies: 5.6263 m 5.6263 m 0.0002 m' - nav rotation: '0.0000 0.0000 290.3265 accuracies: 0.0000 0.0000 1s.0000' - up/down: 'no' - initial pre position: '(0/0/0/0)' - 0.347 -0.938 0.000 -37.162 -0.938 0.347 0.000 31.238 -0.000 0.000 1.000 -0.762 -0.000 0.000 0.000 1.000
```

Level system info: no information about the level system stored in the zfs header



Scan position '38'

Scan position is member of group(s):

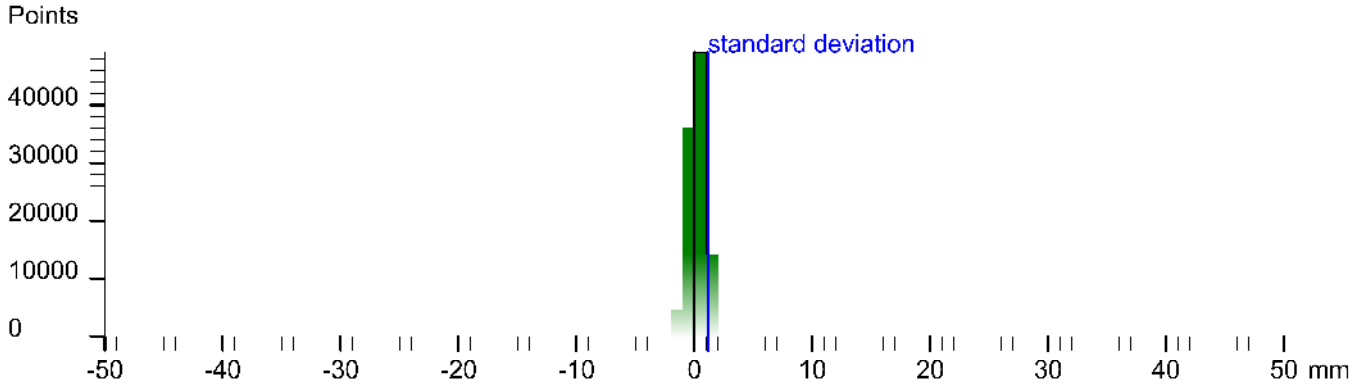
Status registration '[102h] registered with cloud to cloud'

Registration matrix:

```
0.526891  -0.849929  -0.003004  -12.7493 m
0.849933   0.526891   0.001281   6.3075 m
0.000495  -0.003229   0.999994   7.0345 m
0.000000   0.000000   0.000000   1.0000
```

Result registration cloud to cloud standard deviation: 1.1 mm

Deviation histogram



Scan '38'

Scanner 'Z+F IMAGER 5016' serial number '5016-0100' Firmware 9.0.3.6562-0

Scan resolution 'High' quality 'Normal'

Metadata Value

comment
operator

```
Sensor: Z+F IMAGER 5016  
Sensors: 3096 *barometric transition rotation*  
Barometer: 0.997903 bar *28.553 m  
nav translation: 2.9171 m 4.2164 m 127.8421 m accuracies: 7.6878 m 7.6878 m 0.0000 m  
nav rotation: 0.0000 0.0000 0.0000 accuracies: 0.0000 0.0000 1s:0.0000  
upside-down: no  
Initial pre position: (0/door)  
0.978 -0.206 0.000 -34.215  
0.206 0.978 0.000 34.215  
0.000 0.000 1.000 0.295  
0.000 0.000 0.000 1.000
```

Level system info: no information about the level system stored in the zfs header



Scan position '39'

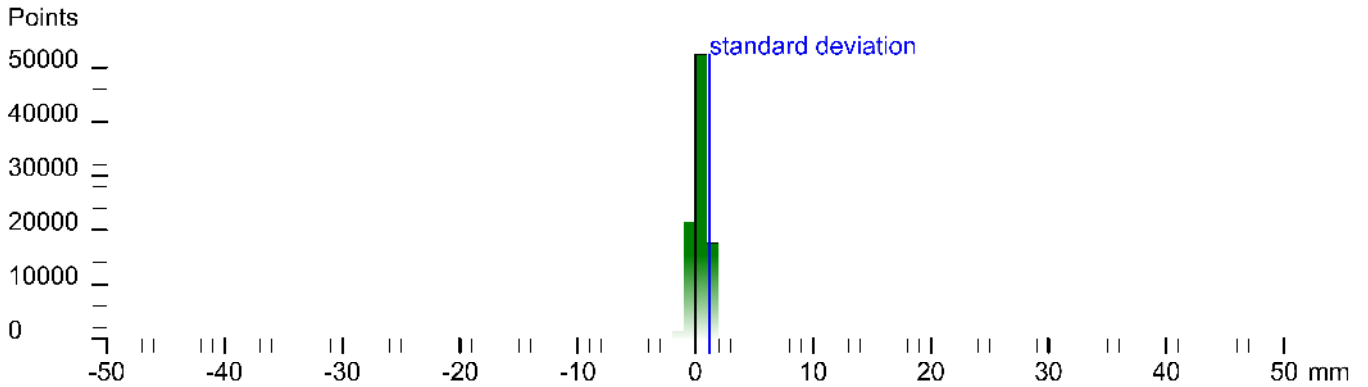
Scan position is member of group(s):
Status registration '[102h] registered with cloud to cloud'
Registration matrix:

```

-0.307418  0.951572  -0.002637  -13.3290 m
-0.951572  -0.307424  -0.001437   0.4618 m
-0.002179  0.002068  0.999995   7.1387 m
0.000000   0.000000   0.000000   1.0000
  
```

Result registration cloud to cloud standard deviation:1.2 mm

Deviation histogram



Scan '39'

Scanner 'Z+F IMAGER 5016' serial number '5016-0100' Firmware 9.0.3.6562-0
Scan resolution 'High' quality 'Normal'

Metadata	Value
comment	
operator	

```

Scan position: 4411 1288364 3931 x: 1.416139 y: 0.000000 z: 0.000000
Sensor
sensors: 3096 *barometer transition rotation*
Barometer: 0.997788 bar *29.527 m
nav translation: -1.7984 m -0.1832 m 128.5392 m accuracies: 7.5/29 m 7.5/29 m 0.0000 m
nav rotation: 0.0000 0.0000 *48.5961 accuracies: 0.0000 0.0000 1s:0.0000
upside-down: no
Initial pre position: (0 indoor)
-0.857 0.521 0.000 -39.014
-0.621 -0.854 0.000 39.272
0.000 0.000 1.000 0.999?
0.000 0.000 0.000 1.000
  
```

Level system info: no information about the level system stored in the zfs header



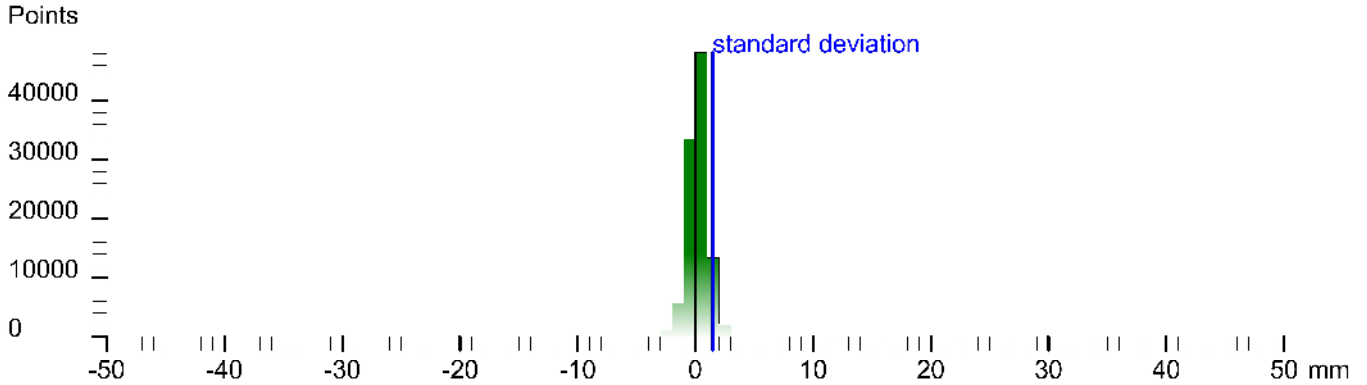
Scan position '4'

Scan position is member of group(s):
 Status registration '[102h] registered with cloud to cloud'
 Registration matrix:

```
0.858194 -0.513323 -0.001829 -10.1247 m
0.513324 0.858196 0.000659 4.8239 m
0.001232 -0.001505 0.999998 0.5738 m
0.000000 0.000000 0.000000 1.0000
```

Result registration cloud to cloud standard deviation: 1.5 mm

Deviation histogram



Scan '4'

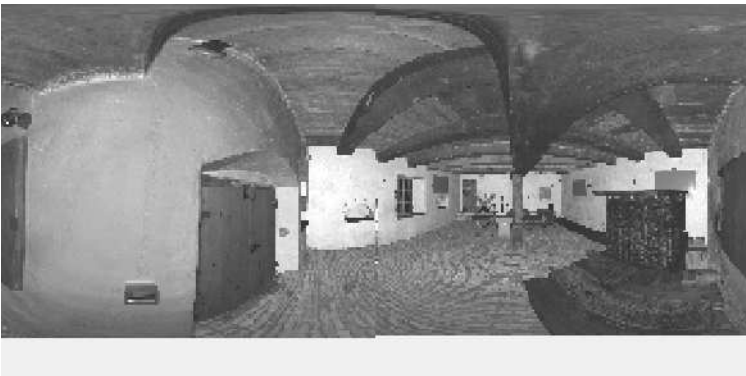
Scanner 'Z+F IMAGER 5016' serial number '5016-0100' Firmware 9.0.3.6562-0
 Scan resolution 'High' quality 'Normal'

Metadata **Value**
comment
operator

```

Sensor
sensors: 3096 *barometric transition rotation*
Barometer: 0.998399 bar ~24.375 m
nav translation: 0.0000 m 0.0000 m 12/ .3832 m accuracies: 5.1000 m 5.1000 m 3.0000 m
nav rotation: 0.0000 0.0000 *1.9/90 accuracies: 0.0000 0.0000 15.0000
upSide-down: no
Initial pre position: (Girdoor)
0.978 0.207 0.000 0.5/-4
-0.207 0.978 0.000 -1.5/8
0.000 0.000 1.000 -/271
0.000 0.000 0.000 1.000
    
```

Level system info: dynamic compensator available.



Scan position '40'

Scan position is member of group(s):

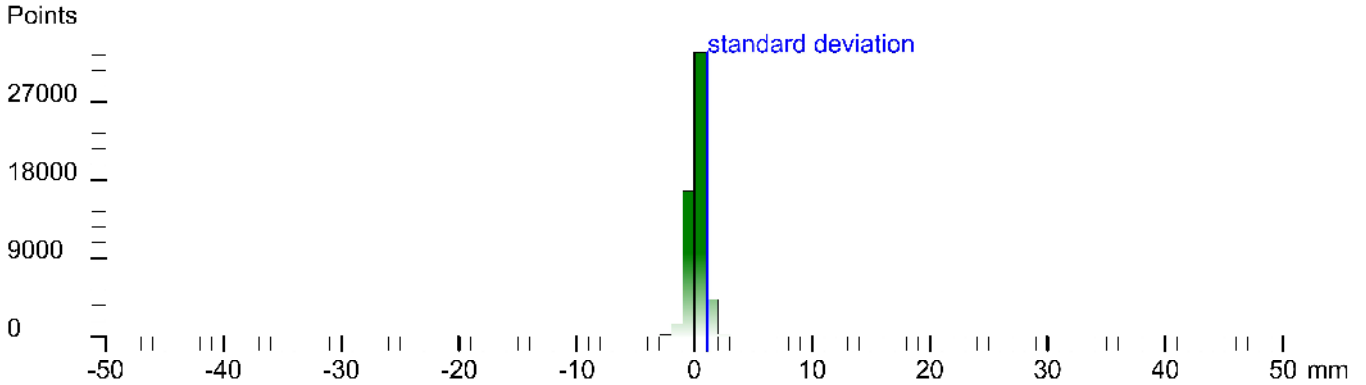
Status registration '[102h] registered with cloud to cloud'

Registration matrix:

-0.318721	-0.947846	-0.002650	-15.3938 m
0.947847	-0.318724	0.001246	1.3469 m
-0.002026	-0.002116	0.999995	7.1721 m
0.000000	0.000000	0.000000	1.0000

Result registration cloud to cloud standard deviation: 1.1 mm

Deviation histogram



Scan '40'

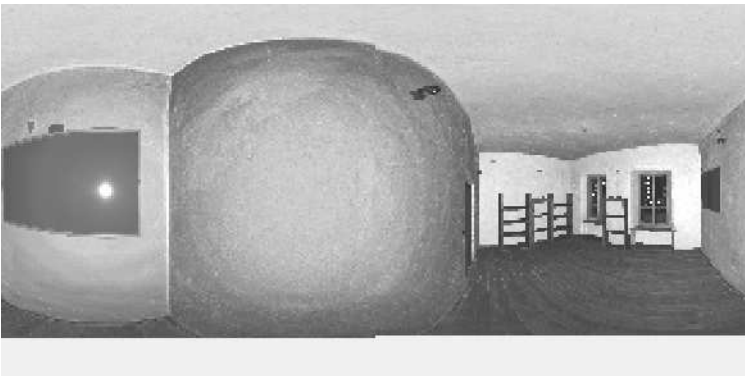
Scanner 'Z+F IMAGER 5016' serial number '5016-0100' Firmware 9.0.3.6562-0

Scan resolution 'High' quality 'Normal'

Metadata	Value
comment	
operator	

```
Scan position: '40' - name: '40' - value: '40' - type: 'string' - unit: 'm' - accuracy: '0.0001' - precision: '0.0001' - range: '0.0001' - min: '0.0001' - max: '0.0001' - sensor: 'Z+F IMAGER 5016' - serial: '5016-0100' - firmware: '9.0.3.6562-0' - resolution: 'High' - quality: 'Normal' - status: '102h' - registration: 'cloud to cloud' - standard deviation: '1.1 mm' - points: '27000' - sensor: 'Z+F IMAGER 5016' - serial: '5016-0100' - firmware: '9.0.3.6562-0' - resolution: 'High' - quality: 'Normal' - status: '102h' - registration: 'cloud to cloud' - standard deviation: '1.1 mm' - points: '27000' - sensor: 'Z+F IMAGER 5016' - serial: '5016-0100' - firmware: '9.0.3.6562-0' - resolution: 'High' - quality: 'Normal' - status: '102h' - registration: 'cloud to cloud' - standard deviation: '1.1 mm' - points: '27000'
```

Level system info: no information about the level system stored in the zfs header



Scan position '41'

Scan position is member of group(s):

Status registration '[102h] registered with cloud to cloud'

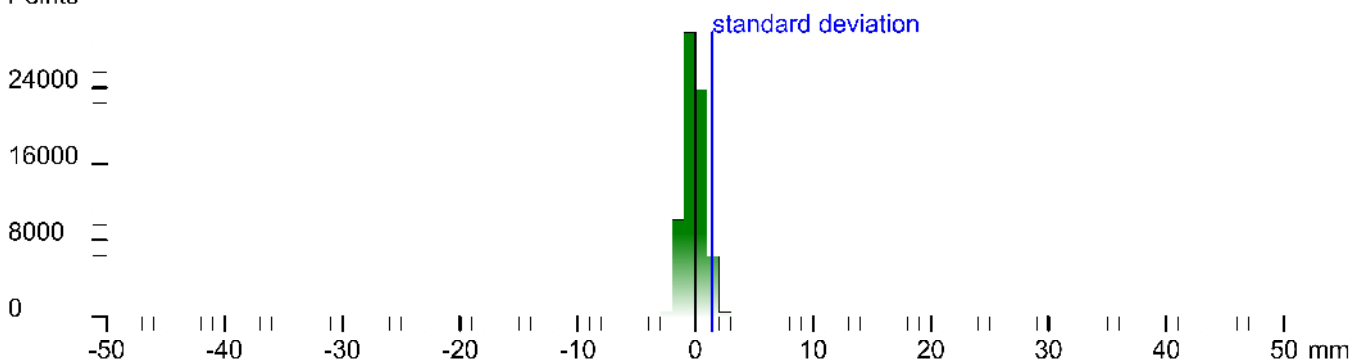
Registration matrix:

```
-0.332955  0.942943  -0.001350  -14.8216 m  
-0.942942  -0.332957  -0.001064  -2.4692 m  
-0.001453  0.000920  0.999998  7.1458 m  
0.000000  0.000000  0.000000  1.0000
```

Result registration cloud to cloud standard deviation: 1.4 mm

Deviation histogram

Points



Scan '41'

Scanner 'Z+F IMAGER 5016' serial number '5016-0100' Firmware 9.0.3.6562-0

Scan resolution 'High' quality 'Normal'

Metadata **Value**
comment
operator

```
Scan position: '41' [102h] registered with cloud to cloud  
Sensor  
sensors: 3096 *barometric transition rotation*  
Barometer: 0.997677 bar / 30.459 m  
nav translation: -2.1073 m -0.4767 m 129.8033 m accuracies: 6.2276 m 6.2276 m 0.0000 m  
nav rotation: 0.0000 0.0000 *49.8895 accuracies: 0.0000 0.0000 15.0000  
upside-down: no  
Initial pre position: (0/door)  
-3.865 0.502 0.000 -42.262  
-3.802 -0.865 0.000 31.831  
0.000 0.000 1.000 2.256  
0.000 0.000 0.000 1.000
```

Level system info: no information about the level system stored in the zfs header



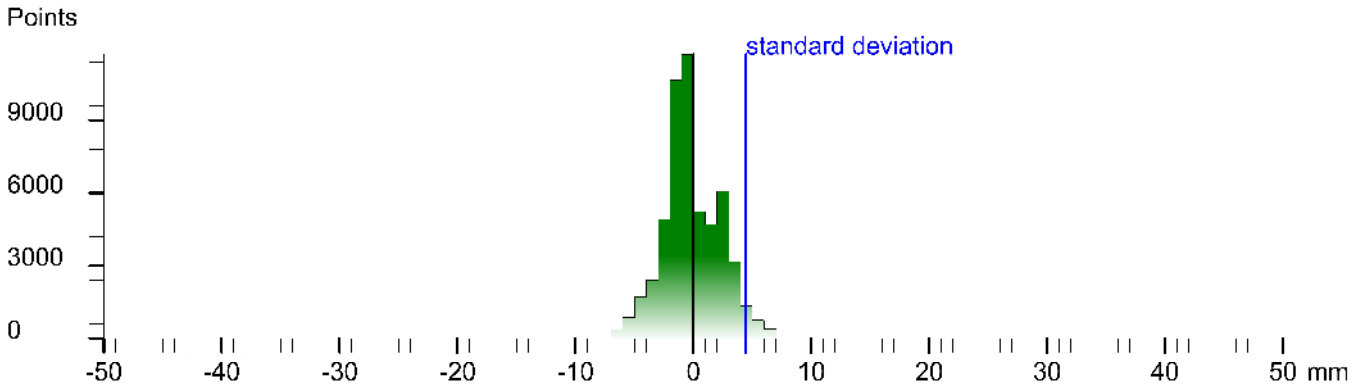
Scan position '42'

Scan position is member of group(s):
Status registration '[102h] registered with cloud to cloud'
Registration matrix:

```
0.737698 -0.675131 -0.001057 -8.9273 m
0.675131 0.737699 0.000881 -0.9856 m
0.000186 -0.001364 0.999999 6.9896 m
0.000000 0.000000 0.000000 1.0000
```

Result registration cloud to cloud standard deviation:4.5 mm

Deviation histogram



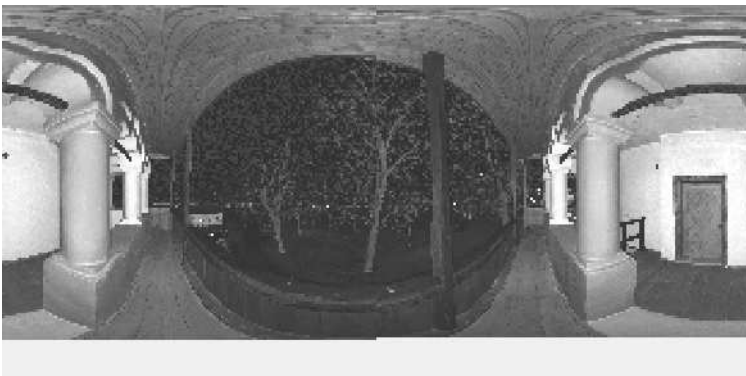
Scan '42'

Scanner 'Z+F IMAGER 5016' serial number '5016-0100' Firmware 9.0.3.6562-0
Scan resolution 'High' quality 'Normal'

Metadata **Value**
comment
operator

```
Scan position: '42' in group: '102h' scan: '42' type: 'Cloud to cloud' status: 'Registered with cloud to cloud' registration matrix: '0.737698 -0.675131 -0.001057 -8.9273 m 0.675131 0.737699 0.000881 -0.9856 m 0.000186 -0.001364 0.999999 6.9896 m 0.000000 0.000000 0.000000 1.0000' sensor: 'Z+F IMAGER 5016' serial number: '5016-0100' firmware: '9.0.3.6562-0' scan resolution: 'High' quality: 'Normal' comment: '' operator: '' sensors: 3100 * barometric transition rotation gps Barometer: 0.997112 bar * 30.166 m nav translation: 1.9506 m 3.9584 m 129.777 m accuracies: 9.3065 m 9.3065 m 0.0000 m nav rotation: 0.0000 0.0000 2.881e-05 accuracies: 0.0000 0.0000 1/2.4456 up/down: no GPS lat:44.370403 long:23.421164 sat:6:ps:4 height:174.2 m hdop:2.2 vdox:3.2 m hacc:1.4 m vacc:4.4 flags:G3's anc store 3D solution' north:4915865.101 m east:692904.277 m zone:34T Initial pre position (0:indoor) 0.999 0.000 0.000 -37.305 -0.050 0.999 0.000 35.800 0.000 0.000 1.000 1.833 0.000 0.000 0.000 1.000
```

Level system info: no information about the level system stored in the zfs header



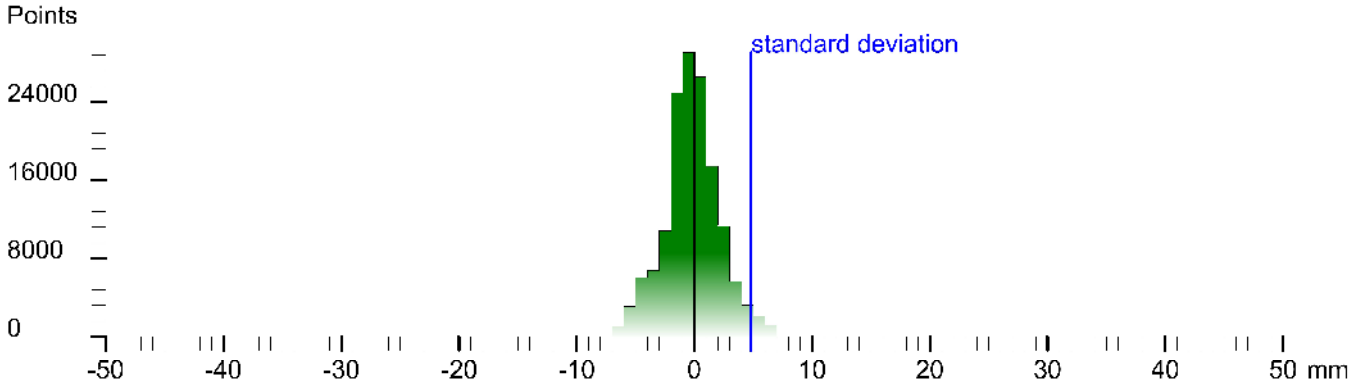
Scan position '43'

Scan position is member of group(s):
Status registration '[102h] registered with cloud to cloud'
Registration matrix:

```
0.883974 -0.467537 -0.001379 -6.0856 m  
0.467537 0.883974 0.000954 3.0722 m  
0.000773 -0.001488 0.999998 7.0366 m  
0.000000 0.000000 0.000000 1.0000
```

Result registration cloud to cloud standard deviation:4.8 mm

Deviation histogram



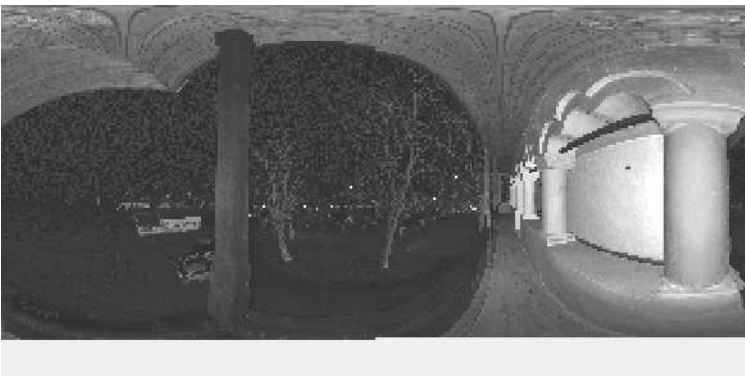
Scan '43'

Scanner 'Z+F IMAGER 5016' serial number '5016-0100' Firmware 9.0.3.6562-0
Scan resolution 'High' quality 'Normal'

Metadata	Value
comment	
operator	

```
Sensor: 3100 * barometer: 0.997685 bar * 30.335 m  
nav translation: 5.9629 m 1.6008 m 129.7791 m accuracies: 8.2274 m 8.2274 m 3.0000 m  
nav rotation: 0.0000 0.0000 0.1866 accuracies: 0.0000 0.0000 1s.0000  
upside-down: no  
GPS lat: 44.370950 long: 23.421362 satellites: 5 height: 182.6m hddos: 4 vddcp: 2.0m hacc: 4.0m vacc: 14.0 tags: G3 * stand alone 3D solution  
north: 1915855.636 m east: 692920.257 m zone: 34T  
Initial pre position (3-coor):  
0.955 0.295 0.000 0.671  
-0.205 0.955 0.000 34.305  
0.000 0.000 1.000 2.232  
0.000 0.000 0.000 1.000
```

Level system info: no information about the level system stored in the zfs header



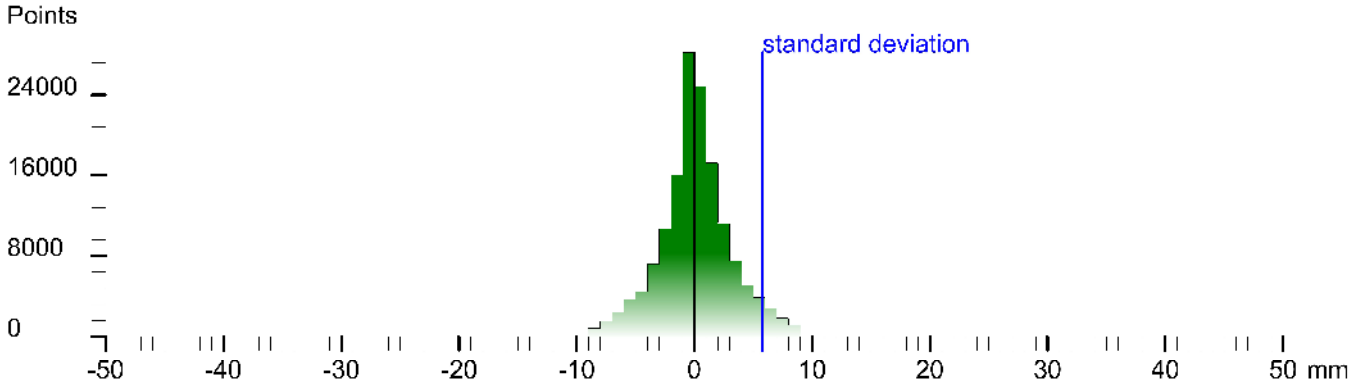
Scan position '44'

Scan position is member of group(s):
 Status registration '[102h] registered with cloud to cloud'
 Registration matrix:

```
-0.565963  0.824431  -0.001138  -11.9032 m
-0.824431  -0.565964  -0.000249  -6.1491 m
-0.000850  0.000798  0.999999  6.9522 m
0.000000  0.000000  0.000000  1.0000
```

Result registration cloud to cloud standard deviation:5.8 mm

Deviation histogram



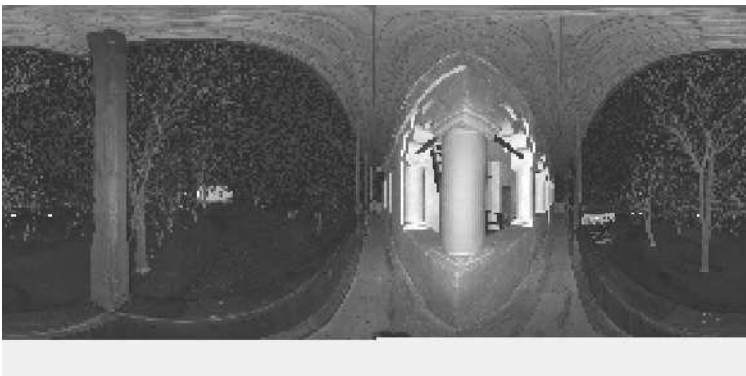
Scan '44'

Scanner 'Z+F IMAGER 5016' serial number '5016-0100' Firmware 9.0.3.6562-0
 Scan resolution 'High' quality 'Normal'

Metadata **Value**
comment
operator

```
Scan comment: null
Sensor
sensors: 3100 *barometer,translation,rotation,gps
Barometer: 0.997672 bar / 30.503 m
nav translation: -12.0807 m 0.3122 m 130.3212 m accuracies: 11.270 / m 11.2704 m 0.0000 m
nav rotation: 0.0000 0.0000 0.643653 accuracies: 0.0000 0.0000 15.0000
upside-down: no
GPS lat:44.370985 long:23.421192 satellites:3 height:106.9m hdop:5.1 vdoop:1.0m hacc:0.4m vacc:12.0 tags:G2 'stand alone 2D solution'
north:4915860.831 m east:692906.679 m zcra:34T
Initial pre position (3-coo. tocoo):
-0.963 0.270 0.000 -11.470
-0.270 -0.963 0.000 34.817
0.000 0.000 1.000 2.777
0.000 0.000 0.000 1.000
```

Level system info: no information about the level system stored in the zfs header



Scan position '46'

Scan position is member of group(s):

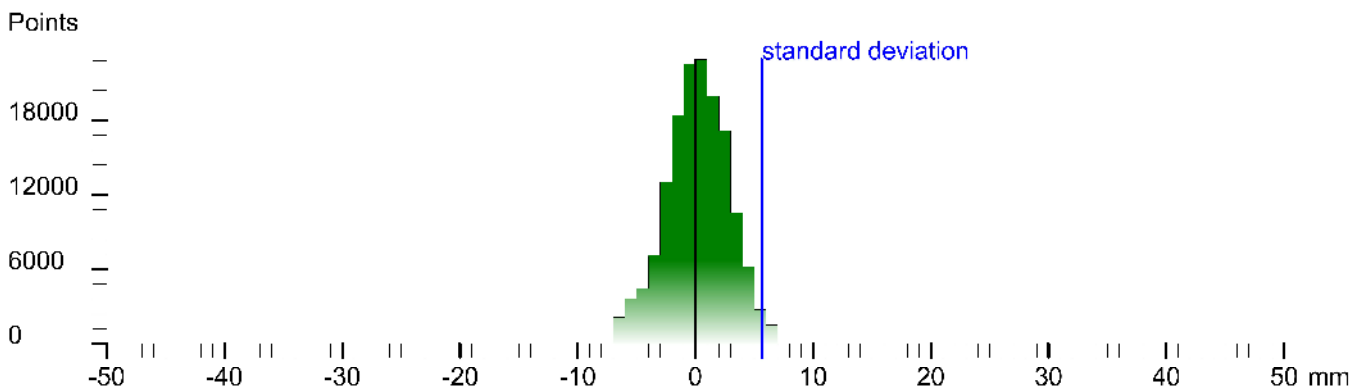
Status registration '[102h] registered with cloud to cloud'

Registration matrix:

```
-0.828349 -0.560209 -0.002519 -19.3454 m
0.560209 -0.828351 0.001374 -1.3688 m
-0.002857 -0.000274 0.999996 7.1219 m
0.000000 0.000000 0.000000 1.0000
```

Result registration cloud to cloud standard deviation:5.7 mm

Deviation histogram



Scan '46'

Scanner 'Z+F IMAGER 5016' serial number '5016-0100' Firmware 9.0.3.6562-0

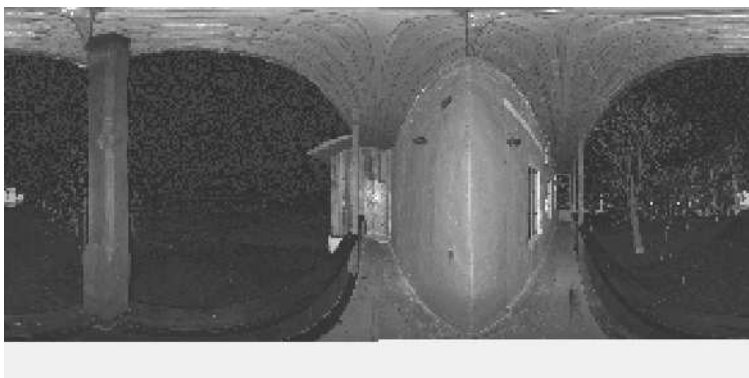
Scan resolution 'High' quality 'Normal'

Metadata **Value**
comment
operator

```
Scan position: '46' - name: '46' - x: 14.1411 - y: 106.5 - z: 3.4126 - rotation: '0.0000 0.0000 0.0000' - scale: 1.0000 - sensor: 'Z+F IMAGER 5016' - serial: '5016-0100' - firmware: '9.0.3.6562-0' - resolution: 'High' - quality: 'Normal' - registration: 'cloud to cloud' - standard deviation: 5.7 mm
```

Sensors: 3100 * barometer translation rotation gps
 Barometer: 0.997598 bar * 31.126 m
 nav translation: -1.5202 m 3.4165 m 130.3892 m accuracies: 7.3023 m 7.3023 m 0.0000 m
 nav rotation: 0.0000 0.0000 2.44129 accuracies: 0.0000 0.0000 1s.0000
 upside-down: no
 GPS lat:44.370435 long:23.421195 satellites:6 height:106.5 m hdop:1.4 vdoop:1.4 m hacc:11.0m vacc:0.0 flags:G3 'stand alone 3D solution'
 north:4915968.896 m east:692906.896 m zone:34T
 Initial pre position (3-coo. tocoo):
 -0.769 -0.863 0.000 -17.685
 0.983 -0.289 0.000 43.604
 0.000 0.000 1.000 2.842
 0.000 0.000 0.000 1.000

Level system info: no information about the level system stored in the zfs header



Scan position '47'

Scan position is member of group(s):

Status registration '[102h] registered with cloud to cloud'

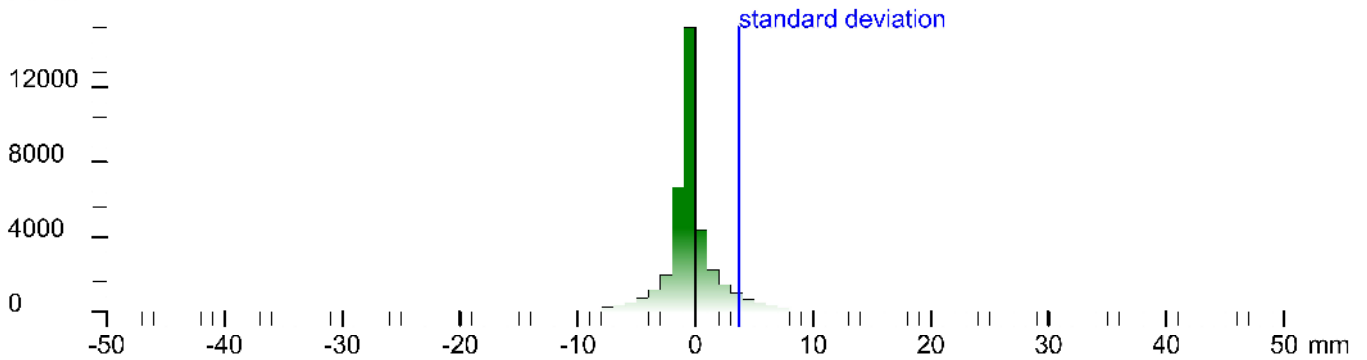
Registration matrix:

```
0.777674  0.628668 -0.001466 -17.0427 m  
-0.628668 0.777674  0.000975  2.3400 m  
0.001753  0.000164  0.999998  7.2601 m  
0.000000  0.000000  0.000000  1.0000
```

Result registration cloud to cloud standard deviation:3.7 mm

Deviation histogram

Points



Scan '47'

Scanner 'Z+F IMAGER 5016' serial number '5016-0100' Firmware 9.0.3.6562-0

Scan resolution 'High' quality 'Normal'

Metadata	Value
comment	
operator	

Sensor: 3096 *barometric transition rotation*
Barometer: 0.997577 bar *31.30° m
nav translation: 1.7462 m 0.0000 m 130.8653 m accuracies: 5.9818 m 5.9818 m 3.0000 m
nav rotation: 0.0000 0.0000 61.9862 accuracies: 0.0000 0.0000 15.0000
upside-down: no
Initial pose position: (Girdoor)
0.746 0.988 0.000 -0.988
-0.988 0.146 0.000 43.860
0.000 0.000 1.000 3.3° S
0.000 0.000 0.000 1.000

Level system info: no information about the level system stored in the zfs header



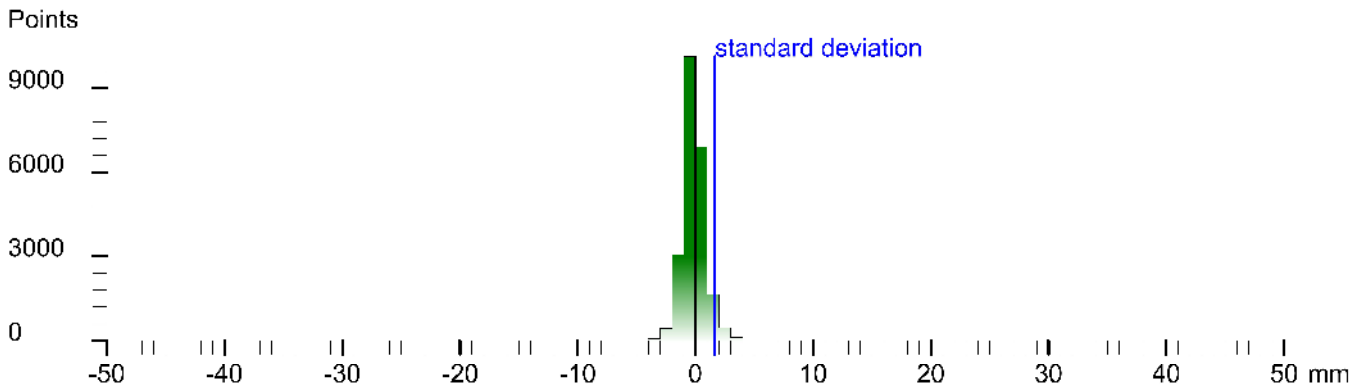
Scan position '48'

Scan position is member of group(s):
 Status registration '[102h] registered with cloud to cloud'
 Registration matrix:

```
0.705837 -0.708368 -0.003316 -17.5176 m
0.708374 0.705837 0.001608 3.7940 m
0.001202 -0.003485 0.999993 7.2136 m
0.000000 0.000000 0.000000 1.0000
```

Result registration cloud to cloud standard deviation: 1.7 mm

Deviation histogram



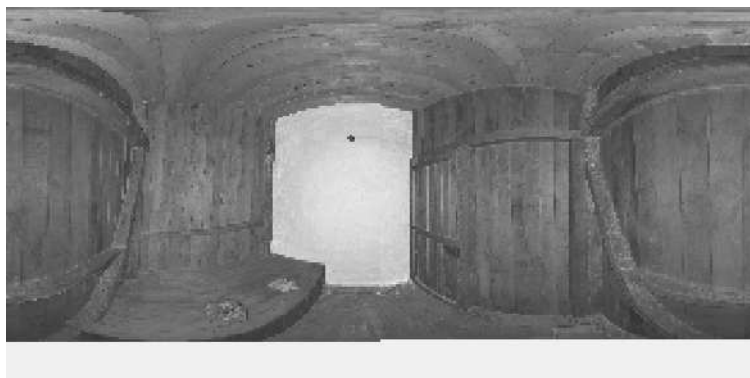
Scan '48'

Scanner 'Z+F IMAGER 5016' serial number '5016-0100' Firmware 9.0.3.6562-0
 Scan resolution 'High' quality 'Normal'

Metadata **Value**
comment
operator

```
Scan position: '48' name: '48' type: '48' ...
Sensor
sensors: 3100 * barometric transition rotation gps
Barometer: 0.997640 bar / 30.769 m
nav translation: 1.4117 m -0.7679 m 130.3322 m accuracies: 5.9172 m 5.9172 m 0.0000 m
nav rotation: 0.0000 0.0000 0.0000 0.0000 0.0000 0.0000 1/1.5538
upside-down: no
GPS lat: 44.370954 long: 23.421310 satellites: 3 height: 189.5m hdop: 3.2 vdcpr: 1.0m hacc: 7.8 m vacc: 18.4 flags: G2 's are above 2D solution'
north: 4915855.839 m east: 69291.6138 m zone: 34T
Initial pre position (0:indoor)
0.999 -0 0=8 0.000 -9.527
0.040 0.000 0.000 43.092
0.000 0.000 1.000 2.765
0.000 0.000 0.000 1.000
```

Level system info: no information about the level system stored in the zfs header



Scan position '6'

Scan position is member of group(s):

Status registration '[102h] registered with cloud to cloud'

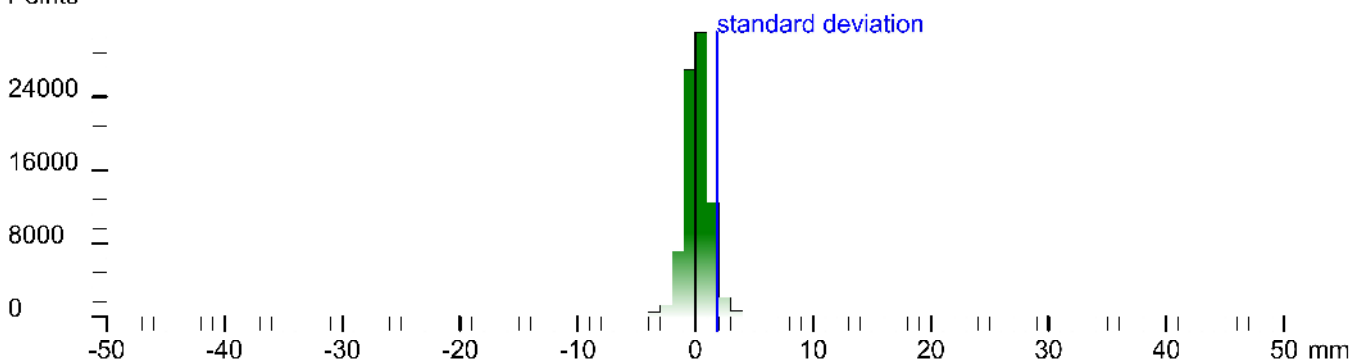
Registration matrix:

```
-0.894668  0.446720 -0.003470 -15.9461 m  
-0.446717 -0.894675 -0.001323  0.8297 m  
-0.003696  0.000368  0.999993  0.7447 m  
0.000000  0.000000  0.000000  1.0000
```

Result registration cloud to cloud standard deviation: 1.8 mm

Deviation histogram

Points



Scan '6'

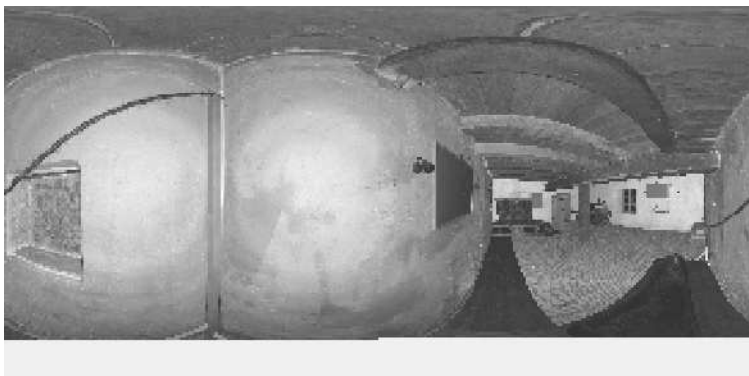
Scanner 'Z+F IMAGER 5016' serial number '5016-0100' Firmware 9.0.3.6562-0

Scan resolution 'High' quality 'Normal'

Metadata **Value**
comment
operator

```
Scan comment: 'Z+F IMAGER 5016' serial: '5016-0100' firmware: '9.0.3.6562-0' scan resolution: 'High' quality: 'Normal'  
Sensor  
sensors: 3096 *barometric transition rotation*  
Barometer: 0.998542 bar *23.174 m  
nav translation: -2.7230 m 3.1638 m 123.0366 m accuracies: 7.1987 m 7.1987 m 0.0000 m  
nav rotation: 0.0000 0.0000 *94.1064 accuracies: 0.0000 0.0000 16.0000  
upside-down: no  
Initial pre position (0 indoor)  
-3.970 -0.244 0.000 -2.153  
0.244 -0.970 0.000 3.588  
0.000 0.000 1.000 -2.618  
0.000 0.000 0.000 1.000
```

Level system info: no information about the level system stored in the zfs header



Scan position '7'

Scan position is member of group(s):

Status registration '[102h] registered with cloud to cloud'

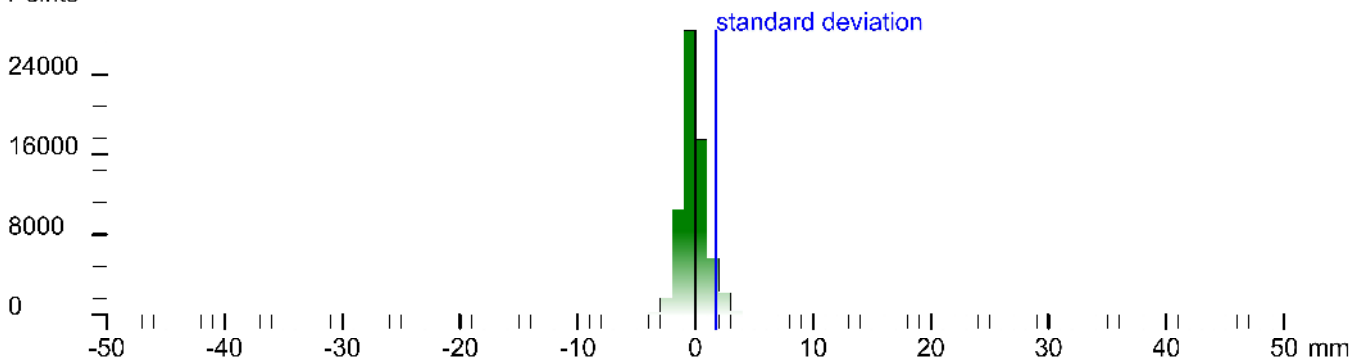
Registration matrix:

```
-0.999841  0.017775  -0.001766  -11.9325 m
-0.017772  -0.999842  -0.000993  -2.5221 m
-0.001785  -0.000961  0.999998   1.0700 m
0.000000   0.000000   0.000000   1.0000
```

Result registration cloud to cloud standard deviation: 1.7 mm

Deviation histogram

Points



Scan '7'

Scanner 'Z+F IMAGER 5016' serial number '5016-0100' Firmware 9.0.3.6562-0

Scan resolution 'High' quality 'Normal'

Metadata **Value**
comment
operator

```
Scan comment: 'Z+F IMAGER 5016' serial number '5016-0100' Firmware '9.0.3.6562-0' scan resolution 'High' quality 'Normal'
Sensor
sensors: 3096 *barometric transition rotation*
Barometer: 0.998568 bar / 22.947 m
nav translation: 0.0000 m 0.0000 m 122.1050 m accuracies: 5.2802 m 5.2802 m 0.0000 m
nav rotation: 0.0000 0.0000 0.0000 216.4301 accuracies: 0.0000 0.0000 16.0000
upside-down: no
Initial pre position: (0 indoor)
-3.805 -0.584 0.000 -2.153
0.694 -0.805 0.000 3.588
0.000 0.000 1.000 -3.248
0.000 0.000 0.000 1.000
```

Level system info: no information about the level system stored in the zfs header



Scan position '8'

Scan position is member of group(s):

Status registration '[102h] registered with cloud to cloud'

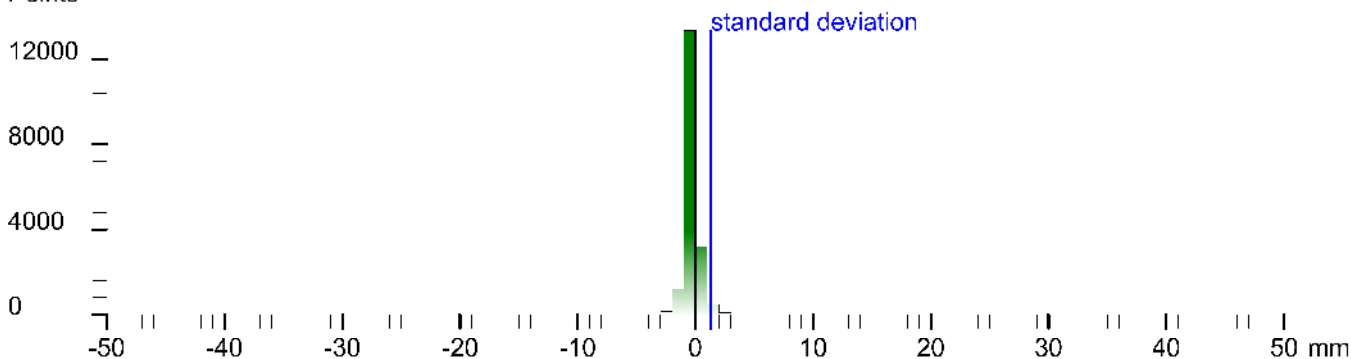
Registration matrix:

-0.997826	0.065862	-0.002494	-12.2946 m
-0.065858	-0.997829	-0.001167	-3.6917 m
-0.002566	-0.000999	0.999996	1.0767 m
0.000000	0.000000	0.000000	1.0000

Result registration cloud to cloud standard deviation: 1.3 mm

Deviation histogram

Points



Scan '8'

Scanner 'Z+F IMAGER 5016' serial number '5016-0100' Firmware 9.0.3.6562-0

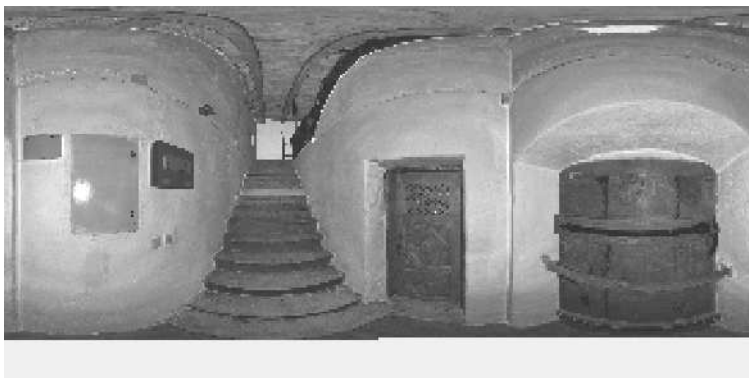
Scan resolution 'High' quality 'Normal'

Metadata **Value**
comment
operator

Sensor: 'Z+F IMAGER 5016' serial: '5016-0100' firmware: '9.0.3.6562-0' scan resolution: 'High' quality: 'Normal'

Sensor:
sensors: 3096 *barometric transition rotation*
Barometer: 0.998648 bar / 22.277 m
nav translation: -3.8063 m 0.0180 m 121.8861 m accuracies: 5.5222 m 5.5222 m 0.0000 m
nav rotation: 0.0000 0.0000 216.3441 accuracies: 0.0000 0.0000 16.0000
upside-down: no
Initial position (0:indoor)
-3.806 -0.583 0.000 -2.900
0.893 -0.816 0.000 3.603
0.000 0.000 1.000 -3.768
0.000 0.000 0.000 1.000

Level system info: dynamic compensator available.



Scan position '9'

Scan position is member of group(s):

Status registration '[102h] registered with cloud to cloud'

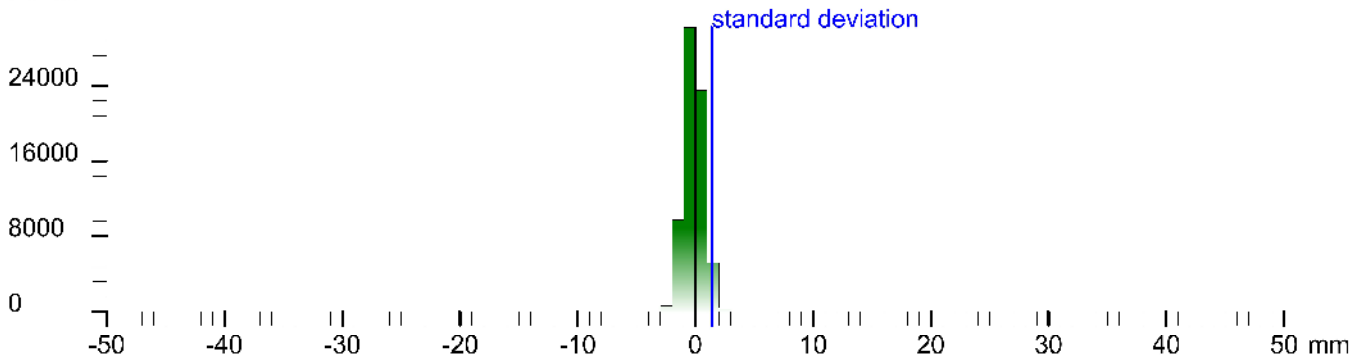
Registration matrix:

```
-0.792992 -0.609228 -0.002513 -13.7541 m
 0.609232 -0.792992 -0.000964 -2.7835 m
-0.001406 -0.002295  0.999996  2.0165 m
 0.000000  0.000000  0.000000  1.0000
```

Result registration cloud to cloud standard deviation: 1.4 mm

Deviation histogram

Points



Scan '9'

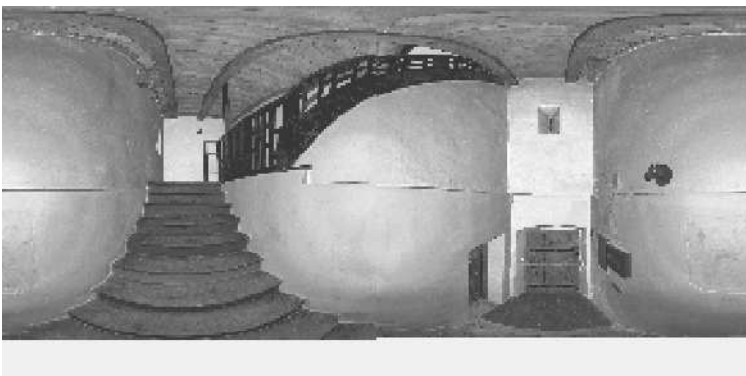
Scanner 'Z+F IMAGER 5016' serial number '5016-0100' Firmware 9.0.3.6562-0

Scan resolution 'High' quality 'Normal'

Metadata	Value
comment	
operator	

Sensor: 3096 *barometric transition rotation*
 Barometer: 0.998555 bar *23.06* m
 nav translation: -5.6776 m 4.6375 m 122.5968 m accuracies: 8.7673 m 8.7673 m 0.000* m
 nav rotation: 0.0000 0.0000 261.192 accuracies: 0.0000 0.0000 1s.0000
 up/down: no
 Initial pre position: (0/door)
 -3.157 -0.988 0.000 -8.637
 0.988 -0.1s:4 0.000 5.240
 0.000 0.000 1.000 -3.058
 0.000 0.000 0.000 1.000

Level system info: dynamic compensator available.



Labels

No labels stored in project

Links

No links stored in project

Summary

Number of scans: **47** used in **47** scan positions

Point clouds: **0**

Scans with color: **0** mapped **0**

Scans with thermal data: **0** mapped **0**

Scans with errors:**0** warnings:**1** messages:**0**

Missed or corrupted scans files: **0**

Scanners used in the project: **5016-0100**

0 known targets used

0 targets used in **0** of **47** scan positions

First scan taken at: **18.4.2023 08:49::05** last scan at: **18.4.2023 15:04:34**

Duration: **6h 15min 29sec**