

Project report

Date: Fri Jun 16 2023 10:26:42
Build with: Z+FLaserControl 9.0.2.24038
Project: Cula Cernatestilor
Master scan position: 1

44 of 44 scans registered.

Quality standard deviation of the cloud to cloud registration

d:4.21 mm

Superior matrix

1.000000	0.000000	0.000000	0.0000 m
0.000000	1.000000	0.000000	0.0000 m
0.000000	0.000000	1.000000	0.0000 m
0.000000	0.000000	0.000000	1.0000

Scan position '1'

Scan position is member of group(s):

Status registration '[102h] registered with cloud to cloud'

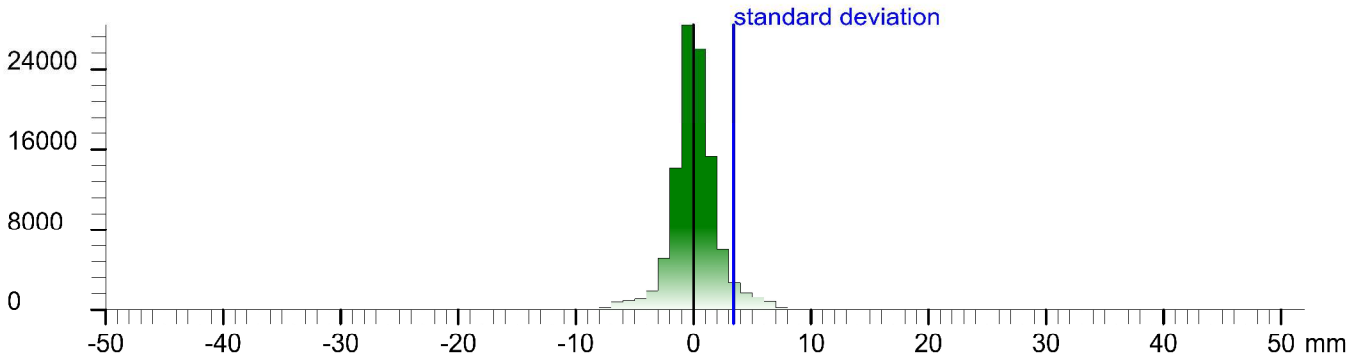
Registration matrix:

```
0.903416  0.428762  0.001707  9.4985 m
-0.428763 0.903417  0.000301 -3.2072 m
-0.001413 -0.001004 0.999998  3.1244 m
0.000000  0.000000  0.000000  1.0000
```

Result registration cloud to cloud standard deviation:3.4 mm

Deviation histogram

Points



Scan '1'

Scanner 'Z+F IMAGER 5016' serial number '5016-0100' Firmware 9.0.3.6562-0

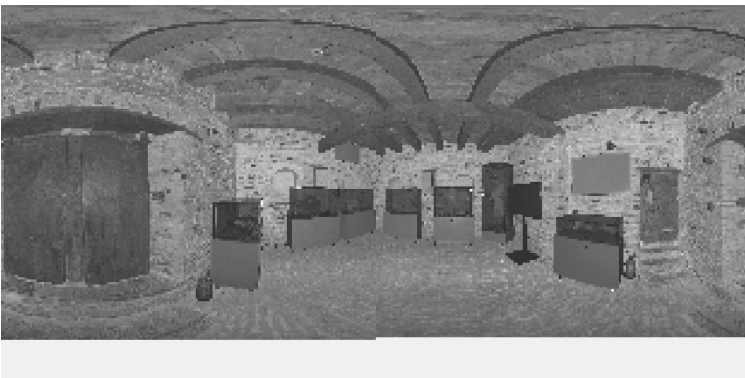
Scan resolution 'High' quality 'Normal'

Metadata	Value
comment	
operator	

Scan command: `-cst "LRCServer 5.0.3" -memorize 1 -file "1" -scanpos "1" -path "C:\Data\CameraTestfor" -project "C:\Data\CameraTestfor" -projectTemplate "" -compensator -nav -temperature "20" -camera "z-cam" -panoramaparams fast-resolution h -quality default -f from "0" -to "181" -frcm1 "20" -im1 "340"`

Sensor
sensors: 3096 'barometer translation rotation'
Barometer: 0.993815 bar 163.067 m
nav translation: 0.0000 m 0.0000 m 162.7338 m accuracies: 5.1000 m 5.1000 m 0.0000 m
nav rotation: 0.0000 0.0000 33.2773 accuracies: 0.0000 0.0000 15.0000
upside-down: no
Initial pre position (0:indoor)
0.836 0.549 0.000 0.000
-0.549 0.836 0.000 0.000
0.000 0.000 1.000 0.000
0.000 0.000 0.000 1.000

Level system info: dynamic compensator available.



Scan position '10'

Scan position is member of group(s):

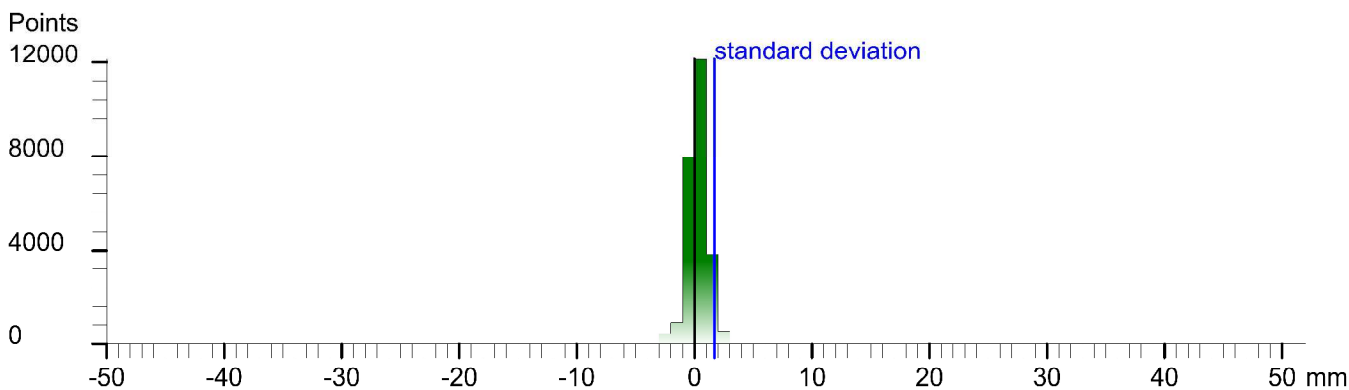
Status registration '[102h] registered with cloud to cloud'

Registration matrix:

```
-0.097186  0.995264  0.002146  5.9446 m  
-0.995266 -0.097184 -0.001248 -3.9976 m  
-0.001033 -0.002257  0.999997  6.9898 m  
0.000000  0.000000  0.000000  1.0000
```

Result registration cloud to cloud standard deviation: 1.7 mm

Deviation histogram



Scan '10'

Scanner 'Z+F IMAGER 5016' serial number '5016-0100' Firmware 9.0.3.6562-0

Scan resolution 'High' quality 'Normal'

Metadata	Value
comment	
operator	

```
Scan command: -cst 1LRCServer 5.0.3 -memorize 1 -file 110 -scans 110 -path "C:\fs\CameraTest\1" -project "C:\fs\CameraTest\1" -projectTemplate "" -nav -temperature 20 -camera 1 -scan -panoramaParams list -resolution h -quality default -from 110 -to 111 -front 120 -int 1340  
Sensor  
sensors: 3096 " barometer translation rotation"  
Barometer: 0.993581 bar 165.043 m  
nav translation: 1.1433 m -3.0813 m 165.0287 m accuracies: 6.7469 m 6.7469 m 0.0000 m  
nav rotation: 0.0000 0.0000 100.1616 accuracies: 0.0000 0.0000 15.0000  
upside-down: no  
Initial pre position (0:indoor)  
-0.176 0.984 0.000 -4.576  
-0.984 -0.176 0.000 -5.213  
0.000 0.000 1.000 2.295  
0.000 0.000 0.000 1.000
```

Level system info: no information about the level system stored in the zfs header



Scan position '11'

Scan position is member of group(s):

Status registration '[102h] registered with cloud to cloud'

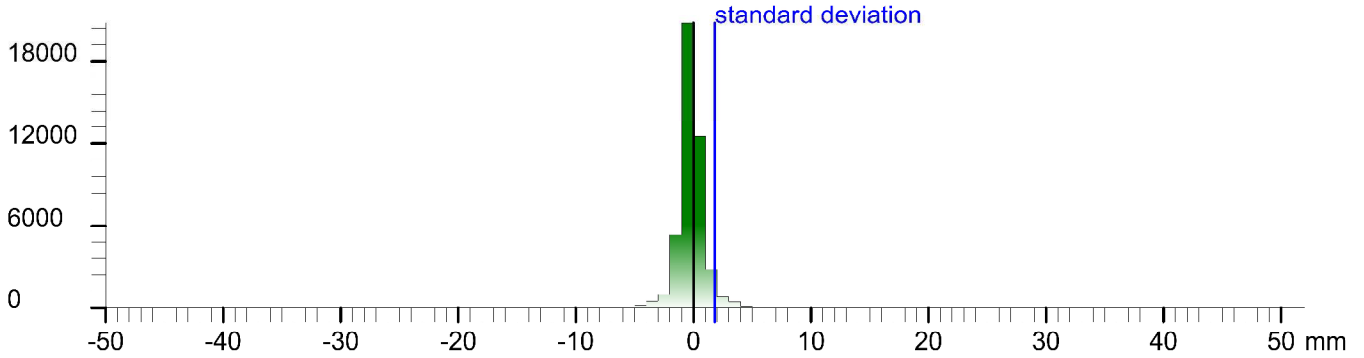
Registration matrix:

```
0.106384 0.994320 0.003144 7.3732 m
-0.994321 0.106392 -0.002454 -5.6581 m
-0.002775 -0.002865 0.999992 7.0096 m
0.000000 0.000000 0.000000 1.0000
```

Result registration cloud to cloud standard deviation: 1.8 mm

Deviation histogram

Points



Scan '11'

Scanner 'Z+F IMAGER 5016' serial number '5016-0100' Firmware 9.0.3.6562-0

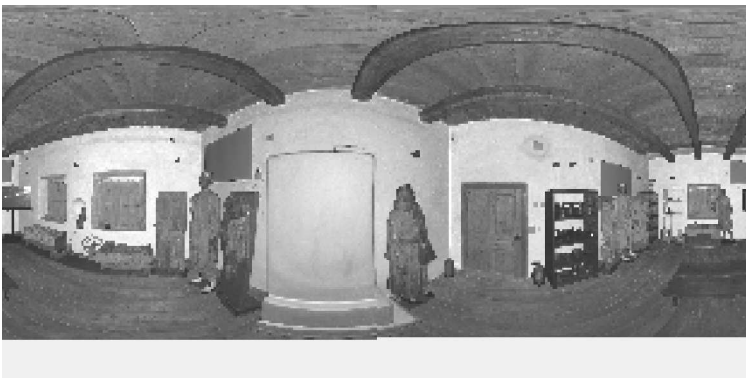
Scan resolution 'High' quality 'Normal'

Metadata **Value**
comment
operator

Scan command: `-cst "LRCServer 5.0.3" -memorize 1 -file "11" -scenpos "11" -path "C:\fs_Cematestfor" -project "C:\fs_Cematestfor" -projectTemplate "" -niv -temperature "20" -camera "scan" -panoramaparams fast-resolution h-quality default -from "0" -to "181" -from1 "20" -to1 "340"`

Sensor
sensors: 3096 "barometer translation rotation"
Barometer: 0.993548 bar 165.329 m
nav translation: 0.3928 m -0.5384 m 164.5596 m accuracies: 5.4816 m 5.4816 m 0.0000 m
nav rotation: 0.0000 0.0000 86.4881 accuracies: 0.0000 0.0000 15.0000
upside-down: no
Initial pre position (0:indoor)
0.061 0.998 0.000 -4.183
-0.998 0.061 0.000 -5.851
0.000 0.000 1.000 1.826
0.000 0.000 0.000 1.000

Level system info: no information about the level system stored in the zfs header



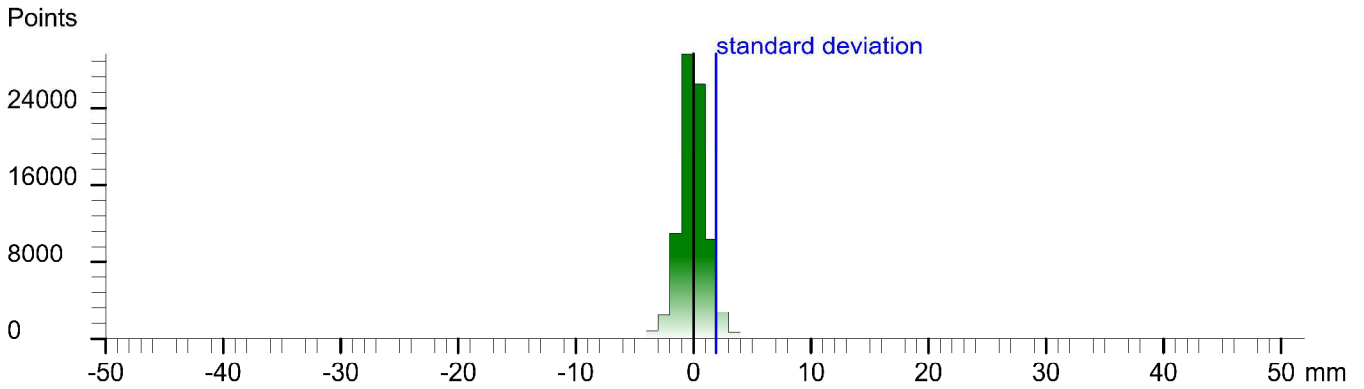
Scan position '12'

Scan position is member of group(s):
Status registration '[102h] registered with cloud to cloud'
Registration matrix:

```
0.999985  0.004875  0.002498  9.2920 m
-0.004875 0.999988 -0.000012 -5.9270 m
-0.002498 0.000000  0.999997  7.0344 m
0.000000  0.000000  0.000000  1.0000
```

Result registration cloud to cloud standard deviation: 1.9 mm

Deviation histogram



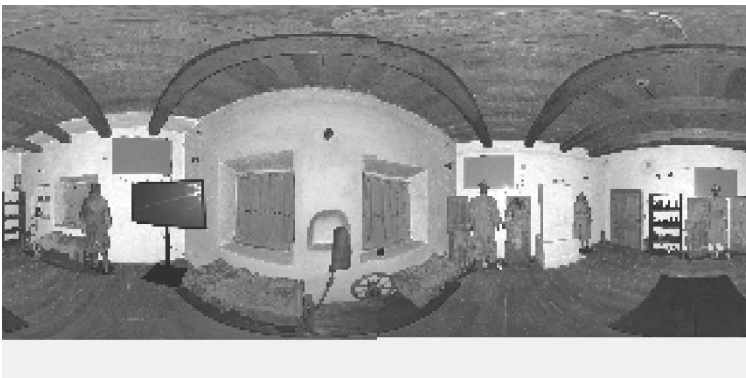
Scan '12'

Scanner 'Z+F IMAGER 5016' serial number '5016-0100' Firmware 9.0.3.6562-0
Scan resolution 'High' quality 'Normal'

Metadata	Value
comment	
operator	

```
Scan command: -cst "LRCServer 5.0.3" -memorize 1 -file "12" -scans "12" -path "C:\fs\CameraTestfor" -project "C:\fs\CameraTestfor" -projectTemplate "" -nav -temperature "20" -camera "l-cam" -panoramaParams list -resolution h -quality default -from "1" -to "181" -front "20" -to1 "340"
Sensor
sensors: 3096 "barometer translation rotation"
Barometer: 0.993557 bar 165.248 m
nav translation: 0.8247 m -0.6751 m 164.8068 m accuracies: 5.6435 m 5.6435 m 0.0000 m
nav rotation: 0.0000 0.0000 4.0731 accuracies: 0.0000 0.0000 129.0909
upside-down: no
Initial pre position (0:indoor)
0.997 0.071 0.000 -3.358
-0.071 0.997 0.000 -6.626
0.000 0.000 1.000 2.073
0.000 0.000 0.000 1.000
```

Level system info: no information about the level system stored in the zfs header



Scan position '13'

Scan position is member of group(s):

Status registration '[102h] registered with cloud to cloud'

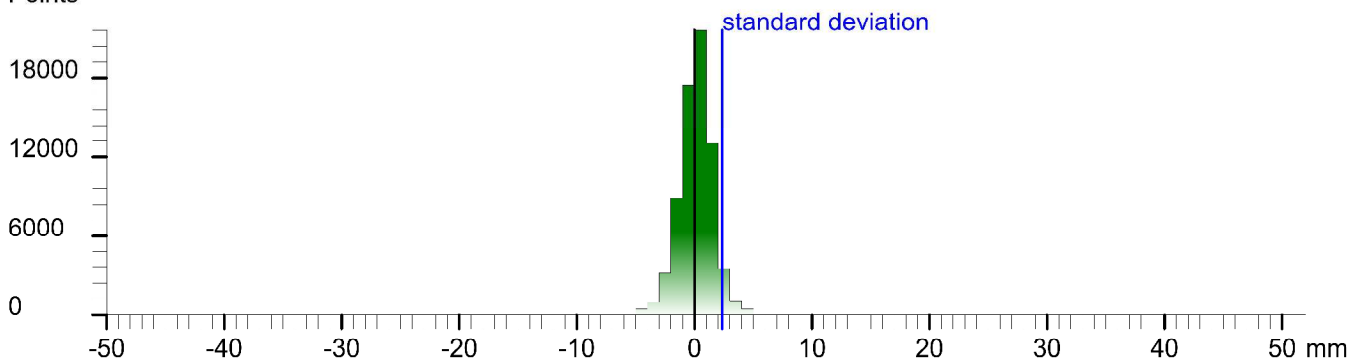
Registration matrix:

0.870313	-0.492495	0.002059	9.3439 m
0.492492	0.870315	0.001749	-3.6239 m
-0.002653	-0.000509	0.999996	7.0034 m
0.000000	0.000000	0.000000	1.0000

Result registration cloud to cloud standard deviation:2.4 mm

Deviation histogram

Points



Scan '13'

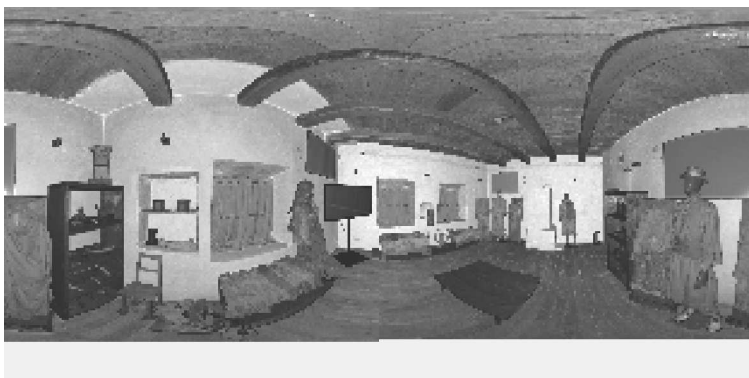
Scanner 'Z+F IMAGER 5016' serial number '5016-0100' Firmware 9.0.3.6562-0

Scan resolution 'High' quality 'Normal'

Metadata	Value
comment	
operator	

```
Scan command: -cst "LRCServer 5.0.3" -memorize 1 -file "13" -scans "13" -path "C:\fs\CameraTestfor" -project "C:\fs\CameraTestfor" -projectTemplate "" -nav -temperature "20" -camera "l-cam" -panoramaparams list -resolution h -quality default -from "1" -to "181" -front "20" -int "1340"
Sensor
sensors: 3096 "barometer translation rotation"
Barometer: 0.993525 bar 165.521 m
nav translation: 0.3751 m 1.1451 m 164.8956 m accuracies: 5.7265 m 5.7265 m 0.0000 m
nav rotation: 0.0000 0.0000 337.6255 accuracies: 0.0000 0.0000 15.0000
upside-down: no
Initial pre position (0:indoor)
0.925 -0.381 0.000 -2.983
0.381 0.925 0.000 -5.381
0.000 0.000 1.000 2.162
0.000 0.000 0.000 1.000
```

Level system info: no information about the level system stored in the zfs header



Scan position '14'

Scan position is member of group(s):

Status registration '[102h] registered with cloud to cloud'

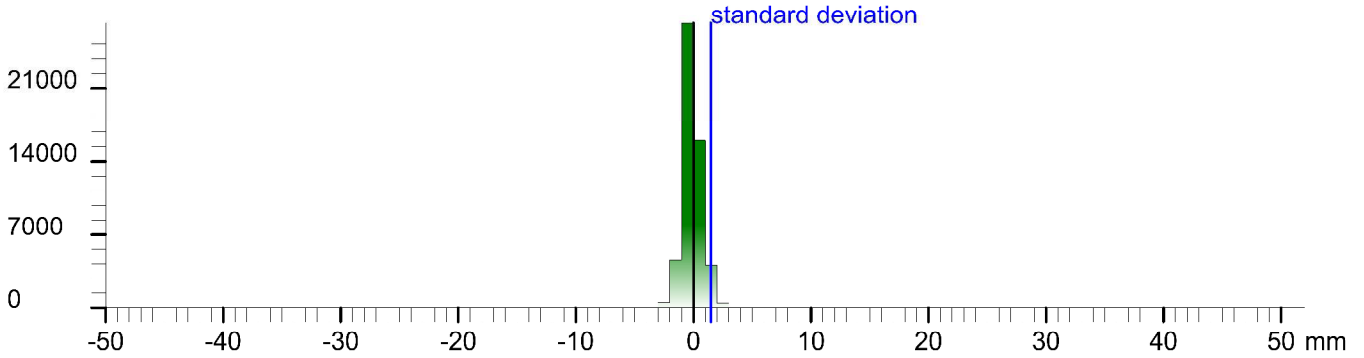
Registration matrix:

0.996469	0.083940	0.001703	5.5700 m
-0.083941	0.996471	0.000450	-3.2944 m
-0.001660	-0.000591	0.999998	6.9452 m
0.000000	0.000000	0.000000	1.0000

Result registration cloud to cloud standard deviation: 1.5 mm

Deviation histogram

Points



Scan '14'

Scanner 'Z+F IMAGER 5016' serial number '5016-0100' Firmware 9.0.3.6562-0

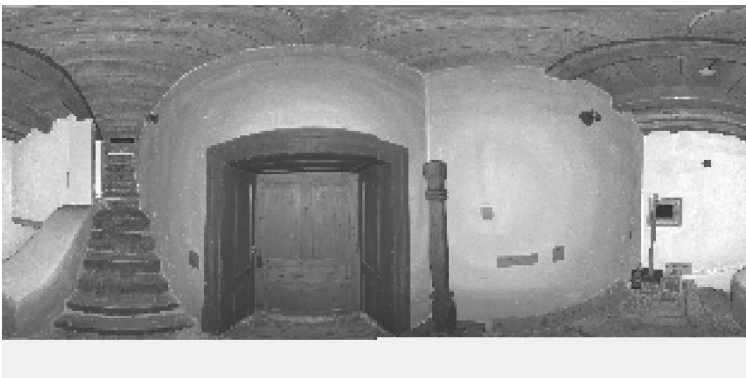
Scan resolution 'High' quality 'Normal'

Metadata	Value
comment	
operator	

Scan command: `-cst 1LRCServer 5.0.3 -memorize 1 -file 14 -scanspos 14 -path "C:\fs\CameraTestfor" -project "C:\fs\CameraTestfor" -projectTemplate "" -nav -temperature 20 -camera 1-cam1 -panoramaparams list-resolution h-quality default -from 14 -to 141 -infront 20 -into 1407`

Sensor
sensors: 3096 'barometer translation rotation'
Barometer: 0.993423 bar 166.385 m
nav translation: 1.8965 m 1.4165 m 165.8340 m accuracies: 6.3016 m 6.3016 m 0.0000 m
nav rotation: 0.0000 0.0000 11.7474 accuracies: 0.0000 0.0000 15.0000
upside-down: no
Initial pre position (0:indoor)
0.979 0.204 0.000 -1.087
-0.204 0.979 0.000 -3.965
0.000 0.000 1.000 3.100
0.000 0.000 0.000 1.000

Level system info: no information about the level system stored in the zfs header



Scan position '15'

Scan position is member of group(s):

Status registration '[102h] registered with cloud to cloud'

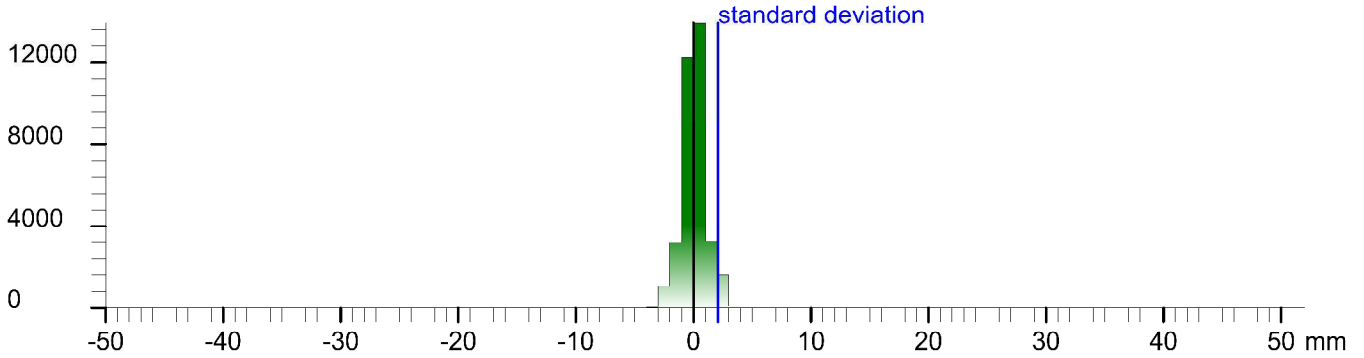
Registration matrix:

0.992060	0.125760	0.001196	7.6239 m
-0.125759	0.992060	-0.001256	-2.1482 m
-0.001344	0.001096	0.999998	8.1031 m
0.000000	0.000000	0.000000	1.0000

Result registration cloud to cloud standard deviation:2.1 mm

Deviation histogram

Points



Scan '15'

Scanner 'Z+F IMAGER 5016' serial number '5016-0100' Firmware 9.0.3.6562-0

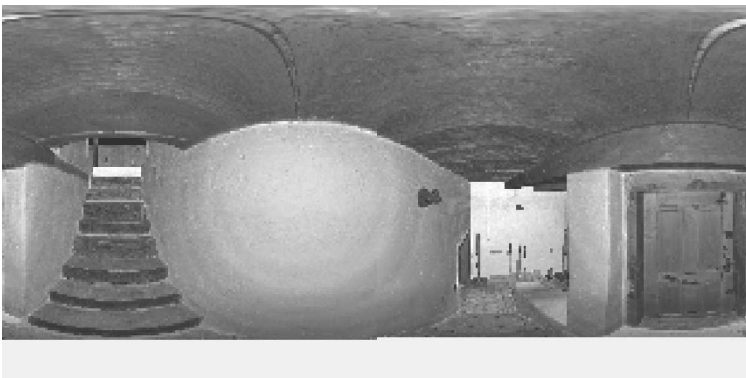
Scan resolution 'High' quality 'Normal'

Metadata	Value
comment	
operator	

Scan command: -cst "LRCServer 5.0.3" -memorize 1 -file "15" -scans "15" -path "C:\fs\CameraTest\15" -project "C:\fs\CameraTest\15" -projectTemplate "" -nav -temperature "20" -camera "l-cam" -panoramaParams list -resolution h-quality default -from "1" -to "181" -front "20" -int "1540"

Sensor
sensors: 3096 " barometer translation rotation"
Barometer: 0.993228 bar 168.029 m
nav translation: 5.8323 m 2.6306 m 167.3971 m accuracies: 8.3608 m 8.3608 m 0.0000 m
nav rotation: 0.0000 0.0000 20.1140 accuracies: 0.0000 0.0000 15.0000
upside-down: no
Initial pre position (0:indoor)
0.939 0.344 0.000 4.746
-0.344 0.939 0.000 -1.334
0.000 0.000 1.000 4.663
0.000 0.000 0.000 1.000

Level system info: no information about the level system stored in the zfs header



Scan position '16'

Scan position is member of group(s):

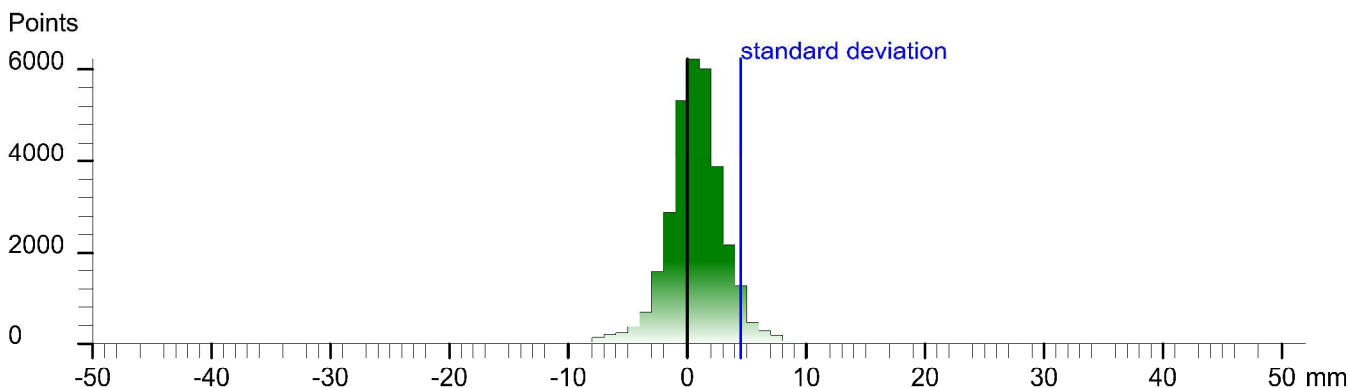
Status registration '[102h] registered with cloud to cloud'

Registration matrix:

```
-0.989190 -0.146594 0.003779 10.1150 m
0.146566 -0.989176 -0.007010 -2.5373 m
0.004766 -0.006380 0.999968 10.2297 m
0.000000 0.000000 0.000000 1.0000
```

Result registration cloud to cloud standard deviation:4.5 mm

Deviation histogram



Scan '16'

Scanner 'Z+F IMAGER 5016' serial number '5016-0100' Firmware 9.0.3.6562-0

Scan resolution 'High' quality 'Normal'

Metadata	Value
comment	
operator	

```
Scan command: -cst "LRCServer 5.0.3" -memorize 1 -file "16" -scans "16" -path "C:\fs\CameraTestfor" -project "C:\fs\CameraTestfor" -projectTemplate "" -nav -temperature "20" -camera "zcam" -panoramaparams list-resolution h-quality default -from "1" -to "181" -front "20" -int "1540"
Sensor
sensors: 3096 "barometer translation rotation"
Barometer: 0.992890 bar 170.895 m
nav translation: 2.6041 m -3.5383 m 170.1231 m accuracies: 7.3162 m 7.3162 m 0.0000 m
nav rotation: 0.0000 0.0000 187.4703 accuracies: 0.0000 0.0000 15.0000
upside-down: no
Initial pre position (0:indoor)
-0.992 -0.130 0.000 7.350
0.130 -0.992 0.000 -4.872
0.000 0.000 1.000 7.389
0.000 0.000 0.000 1.000
```

Level system info: no information about the level system stored in the zfs header



Scan position '17'

Scan position is member of group(s):

Status registration '[102h] registered with cloud to cloud'

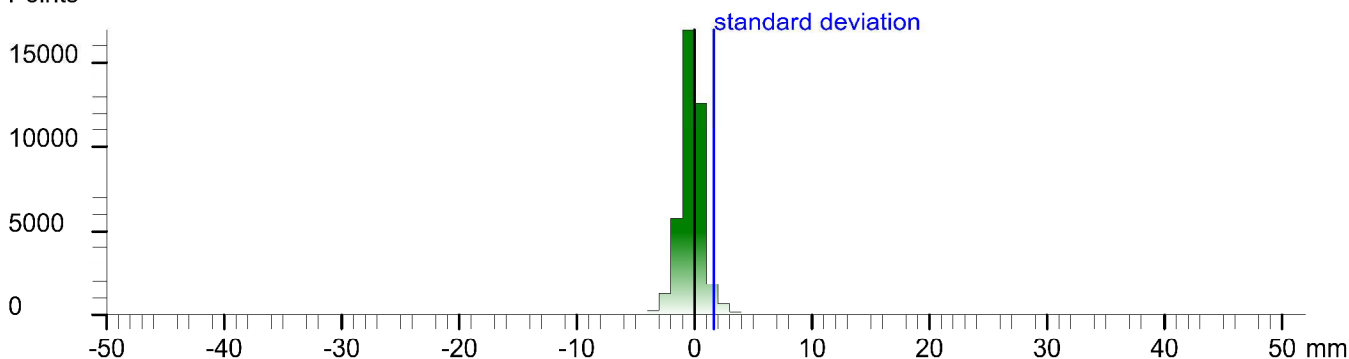
Registration matrix:

```
-0.988592  0.150581  0.003311  8.6050 m  
-0.150602 -0.988567 -0.007388 -4.0981 m  
0.002161 -0.007803  0.999967  10.2147 m  
0.000000  0.000000  0.000000  1.0000
```

Result registration cloud to cloud standard deviation: 1.6 mm

Deviation histogram

Points



Scan '17'

Scanner 'Z+F IMAGER 5016' serial number '5016-0100' Firmware 9.0.3.6562-0

Scan resolution 'High' quality 'Normal'

Metadata	Value
comment	
operator	

```
Scan command: -cst 1LRCServer 5.0.3 -memorize 1 -file 17 -scans 17 -path "C:\fs\CameraTest\17" -project "C:\fs\CameraTest\17" -projectTemplate "" -nav -temperature 20 -camera 1 -cam -panoramaparams list -resolution h -quality default -from 17 -to 181 -infront 20 -into 1340  
Sensor  
sensors: 3096 1 barometer translation rotation 1  
Barometer: 0.992848 bar 171.248 m  
nav translation: -1.9723 m -1.6332 m 170.4602 m accuracies: 6.4071 m 6.4071 m 0.0000 m  
nav rotation: 0.0000 0.0000 172.6933 accuracies: 0.0000 0.0000 15.0000  
upside-down: no  
Initial pre position (0:indoor)  
-0.992 0.127 0.000 5.377  
-0.127 -0.992 0.000 -6.506  
0.000 0.000 1.000 7.726  
0.000 0.000 0.000 1.000
```

Level system info: no information about the level system stored in the zfs header



Scan position '18'

Scan position is member of group(s):

Status registration '[102h] registered with cloud to cloud'

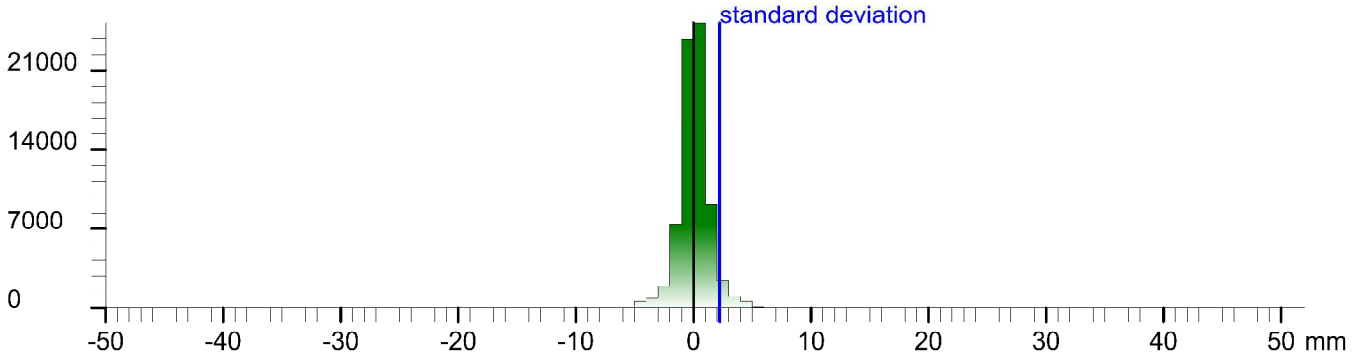
Registration matrix:

```
-0.213127  0.977013  0.004742  9.4636 m
-0.977005 -0.213089 -0.007387 -5.9683 m
-0.006207 -0.006207  0.999961 10.2118 m
0.000000  0.000000  0.000000  1.0000
```

Result registration cloud to cloud standard deviation:2.2 mm

Deviation histogram

Points



Scan '18'

Scanner 'Z+F IMAGER 5016' serial number '5016-0100' Firmware 9.0.3.6562-0

Scan resolution 'High' quality 'Normal'

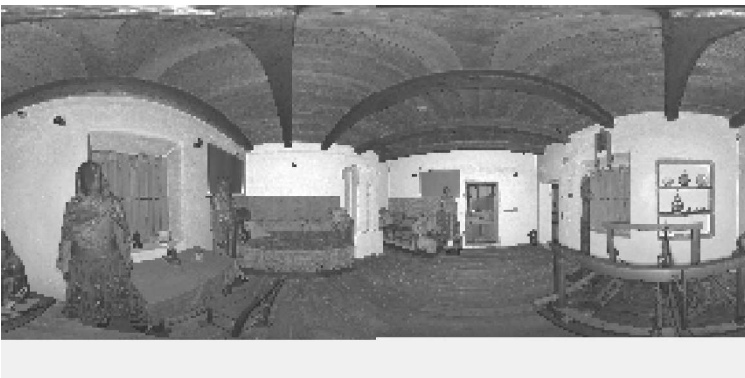
Metadata	Value
comment	
operator	

```
Scan command: -cst "LRCServer 5.0.3" -memorize 1 -file "18" -scans "18" -path "C:\fs\CameraTestfor" -project "C:\fs\CameraTestfor" -projectTemplate "" -nav -temperature "20" -camera "l-cant" -panoramaparams list -resolution h -quality default -from "1" -to "181" -front "20" -int "1540"
```

Sensor

```
sensors: 3096 "barometer translation rotation"
Barometer: 0.992694 bar 172.553 m
nav translation: -0.2486 m -3.2043 m 171.7515 m accuracies: 6.7741 m 6.7741 m 0.0000 m
nav rotation: 0.0000 0.0000 102.6394 accuracies: 0.0000 0.0000 15.0000
upside-down: no
Initial pre position (0:indoor)
-0.219 0.976 0.000 5.129
-0.976 -0.219 0.000 -9.710
0.000 0.000 1.000 9.018
0.000 0.000 0.000 1.000
```

Level system info: no information about the level system stored in the zfs header



Scan position '19'

Scan position is member of group(s):

Status registration '[102h] registered with cloud to cloud'

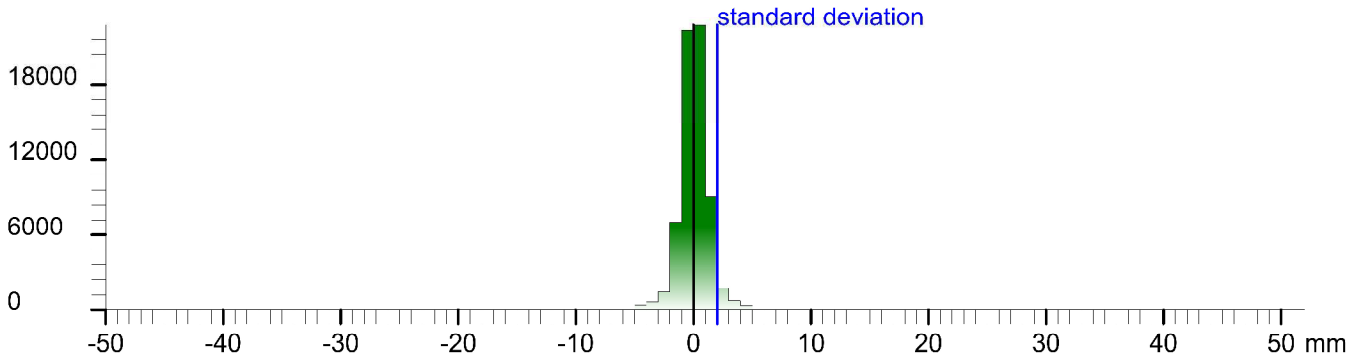
Registration matrix:

```
-0.911593  0.411083  0.002958  7.6866 m
-0.411094 -0.911560 -0.007786 -5.5088 m
-0.000505 -0.008314  0.999965  10.2103 m
0.000000  0.000000  0.000000  1.0000
```

Result registration cloud to cloud standard deviation:2.0 mm

Deviation histogram

Points



Scan '19'

Scanner 'Z+F IMAGER 5016' serial number '5016-0100' Firmware 9.0.3.6562-0

Scan resolution 'High' quality 'Normal'

Metadata	Value
comment	
operator	

```
Scan command: -cst "LRCServer 5.0.3" -memorize 1 -file "19" -scans "19" -path "C:\fs\CameraTestfor" -project "C:\fs\CameraTestfor" -projectTemplate "" -nav -temperature "20" -camera "l-cam" -panoramaparams list-resolution h-quality default -from "1" -to "181" -infront "20" -into "340"
```

Sensor

```
sensors: 3096 "barometer translation rotation"
Barometer: 0.992595 bar 173.388 m
nav translation: -0.8190 m -0.9321 m 172.5887 m accuracies: 5.7386 m 5.7386 m 0.0000 m
nav rotation: 0.0000 0.0000 157.1142 accuracies: 0.0000 0.0000 15.0000
upside-down: no
Initial pre position (0:indoor)
-0.921 0.389 0.000 4.310
-0.389 -0.921 0.000 -10.642
0.000 0.000 1.000 9.855
0.000 0.000 0.000 1.000
```

Level system info: no information about the level system stored in the zfs header



Scan position '2'

Scan position is member of group(s):

Status registration '[102h] registered with cloud to cloud'

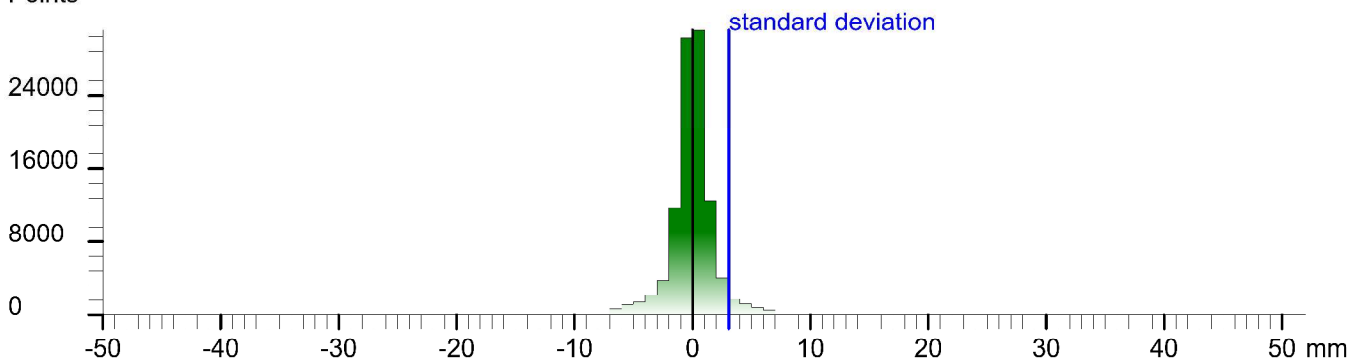
Registration matrix:

```
-0.723771 0.690039 0.001133 7.5060 m  
-0.690040 -0.723771 -0.000776 -4.8757 m  
0.000284 -0.001343 0.999999 3.1237 m  
0.000000 0.000000 0.000000 1.0000
```

Result registration cloud to cloud standard deviation:3.1 mm

Deviation histogram

Points



Scan '2'

Scanner 'Z+F IMAGER 5016' serial number '5016-0100' Firmware 9.0.3.6562-0

Scan resolution 'High' quality 'Normal'

Metadata	Value
comment	
operator	

```
Scan command: -cst "LRCServer 5.0.3" -memorize 1 -file "2" -scans "2" -path "C:\Data Cemetery" -project "C:\Data Cemetery" -projectTemplate "" -compensator -nav -temperature "20" -camera "cam" -panoramaparams fast-resolution h -quality default -from "0" -to "181" -from1 "20" -to1 "340"  
Sensor  
sensors: 3096 "barometer translation rotation"  
Barometer: 0.993957 bar 161.868 m  
nav translation: 1.4004 m 1.7317 m 161.6505 m accuracies: 6.2425 m 6.2425 m 0.0000 m  
nav rotation: 0.0000 0.0000 136.4444 accuracies: 0.0000 0.0000 15.0000  
upside-down: no  
Initial pre position (0:indoor)  
-0.748 0.663 0.000 1.400  
-0.663 -0.748 0.000 1.732  
0.000 0.000 1.000 -1.083  
0.000 0.000 0.000 1.000
```

Level system info: dynamic compensator available.



Scan position '20'

Scan position is member of group(s):
Status registration '[23h] preregistered'
Registration matrix:

-0.984612	0.174754	0.000000	13.8473 m
-0.174754	-0.984612	0.000000	3.8588 m
0.000000	0.000000	1.000000	3.3183 m
0.000000	0.000000	0.000000	1.0000

Scan '20'

Scanner 'Z+F IMAGER 5016' serial number '5016-0100' Firmware 9.0.3.6562-0
Scan resolution 'High' quality 'Normal'

Metadata	Value
----------	-------

comment
operator

Scan command: -ch1 "LRCServer 5.0.3" -memorize 1 -file "20" -scanspos "20" -path "C:\fs\Cematestor" -project "C:\fs\Cematestor" -projecttemplate "" -compensator -nav -temperature "20" -camera "l-cam" -smallight -panoramaparams fast -resolution h -quality default -from "0" -to "181" -from1 "20" -to1 "340"

Sensor

sensors: 3100 ' barometer translation rotation gps'
Barometer: 0.993363 bar 166.891 m
nav translation: 9.5375 m 14.5007 m 166.0521 m accuracies: 13.8573 m 13.8573 m 0.0000 m
nav rotation: 0.0000 0.0000 169.9357 accuracies: 0.0000 0.0000 15.0000
upside-down: no
GPS lat:44.449726 long:23.433474 satellites:5 height:199.1m hdop:2.5 vdop:3.5m hacc:10.0m vacc:25.0 flags:G3 'stand alone 3D solution'
north:4924705,195 m east:693623,044 m zone:34T
Initial pre position (3:outdoor)
-0.985 0.175 0.000 13.847
-0.175 -0.985 0.000 3.859
0.000 0.000 1.000 3.318
0.000 0.000 0.000 1.000

Level system info: dynamic compensator available.



Scan position '21'

Scan position is member of group(s):

Status registration '[102h] registered with cloud to cloud'

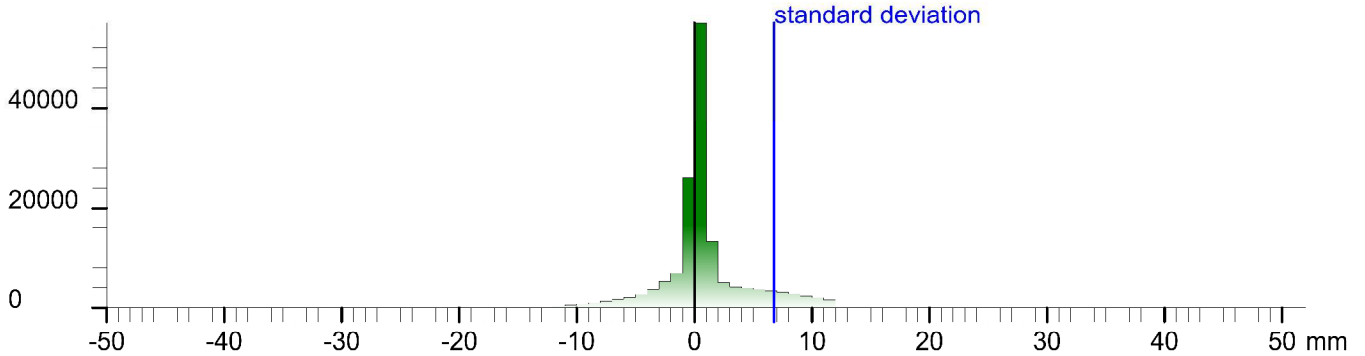
Registration matrix:

```
-0.690094 0.723719 0.000698 19.3392 m  
-0.723719 -0.690094 -0.000313 1.4395 m  
0.000256 -0.000721 1.000000 2.6177 m  
0.000000 0.000000 0.000000 1.0000
```

Result registration cloud to cloud standard deviation:6.8 mm

Deviation histogram

Points



Scan '21'

Scanner 'Z+F IMAGER 5016' serial number '5016-0100' Firmware 9.0.3.6562-0

Scan resolution 'High' quality 'Normal'

Metadata **Value**
comment
operator

```
Scan command: -cst "LRCServer 5.0.3" -memorize 1 -file "21" -scans "21" -path "C:\fs\CameraTestfor" -project "C:\fs\CameraTestfor" -projectTemplate "" -compensator -nav -temperature "20" -camera "l-cam" -smalLight -panoramaparams fast -resolution h -quality default -from "0" -to "181" -fromd "20" -to1 "347"  
Sensor  
sensors: 3100' barometer translation rotation gps'  
Barometer: 0.993332 bar 167.15 m  
nav translation: 2.0623 m -3.8511 m 166.6136 m accuracies: 7.3111 m 7.3111 m 0.0000 m  
nav rotation: 0.0000 0.0000 136.9113 accuracies: 0.0000 0.0000 15.0000  
upside-down: no  
GPS lat:44.449680 long:23.433599 satellites:7 height:208.3m hdop:1.5 vdop:2.2m haacc:6.7m vacc:9.6 flags:G3 'stand alone 3D solution'  
north:4924700.408 m east:693633.212 m zone:34T  
Initial pre position (3:outdoor)  
-0.730 0.683 0.000 14.847  
-0.683 -0.730 0.000 4.859  
0.000 0.000 1.000 3.318  
0.000 0.000 0.000 1.000
```

Level system info: dynamic compensator available.



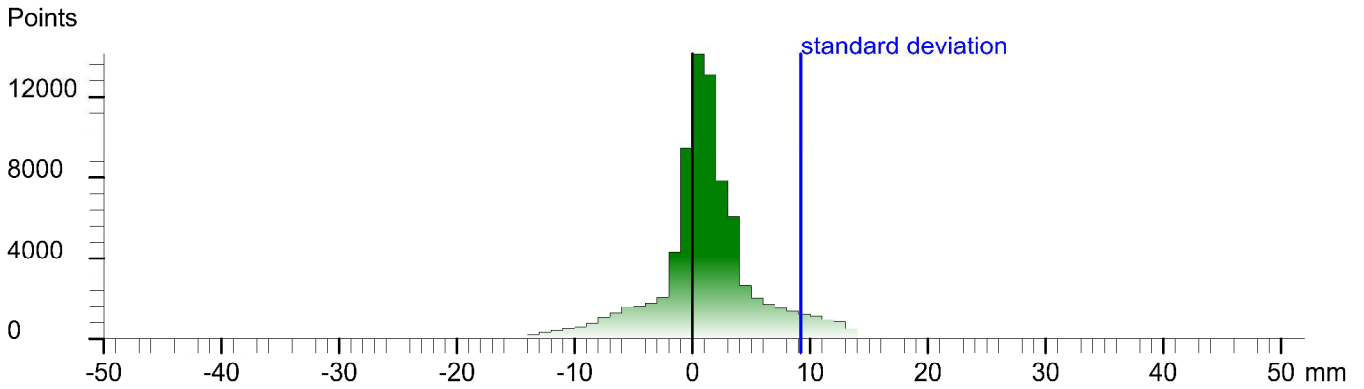
Scan position '22'

Scan position is member of group(s):
Status registration '[102h] registered with cloud to cloud'
Registration matrix:

```
-0.989004 -0.147889 -0.000212 20.7135 m  
0.147889 -0.989004 -0.000014 -8.1789 m  
-0.000207 -0.000045 1.000000 1.9816 m  
0.000000 0.000000 0.000000 1.0000
```

Result registration cloud to cloud standard deviation:9.2 mm

Deviation histogram



Scan '22'

Scanner 'Z+F IMAGER 5016' serial number '5016-0100' Firmware 9.0.3.6562-0
Scan resolution 'High' quality 'Normal'

Metadata	Value
comment	
operator	

```
Scan command: -cst "LRCServer 5.0.3" -memorize 1 -file "22" -scans "22" -path "C:\fs\CameraTestfor" -project "C:\fs\CameraTestfor" -projectTemplate "" -compressor -nav -temperature "20" -camera "1-cam" -smalLight -panoramaparams fast -resolution h -quality default -focm "0" -fov "161" -focmd "20" -fov1 "340"  
Sensor  
sensors: 3100' barometer translation rotation gps'  
Barometer: 0.993287 bar 167.537 m  
nav translation: -1.7086 m -5.3831 m 167.0879 m accuracies: 7.9685 m 7.9685 m 0.0000 m  
nav rotation: 0.0000 0.0000 190.9742 accuracies: 0.0000 0.0000 15.0000  
upside-down: no  
GPS lat:44.449600 long:23.433596 satellites:6 height:204.6m hdop:2.4 vdop:2.9m haacc:6.2m vacc:7.5 flags:G3 'stand alone 3D solution'  
north:4924691.501 m east:693633.173 m zone:34T  
Initial pre position (3:outdoor)  
-0.982 -0.190 0.000 13.139  
0.190 -0.982 0.000 -0.524  
0.000 0.000 1.000 3.793  
0.000 0.000 0.000 1.000
```

Level system info: dynamic compensator available.



Scan position '23'

Scan position is member of group(s):

Status registration '[102h] registered with cloud to cloud'

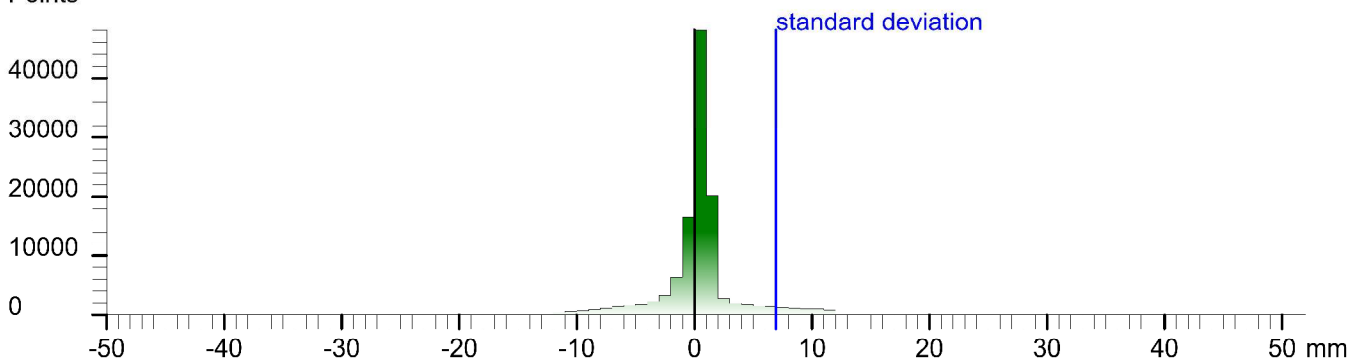
Registration matrix:

```
-0.290431 -0.956896 -0.000096 14.1858 m
0.956895 -0.290430 0.001282 -15.6052 m
-0.001254 0.000280 0.999999 2.3153 m
0.000000 0.000000 0.000000 1.0000
```

Result registration cloud to cloud standard deviation:6.9 mm

Deviation histogram

Points



Scan '23'

Scanner 'Z+F IMAGER 5016' serial number '5016-0100' Firmware 9.0.3.6562-0

Scan resolution 'High' quality 'Normal'

Metadata Value comment operator

```
Scan command: -cst \LRCServer 5.0.3* -memorize 1 -file '23' -scans '23' -path "%C:\%Carnatedfor*" -project "%C:\%Carnatedfor*" -projectTemplate "" -compressor -nav -temperature "20" -camera "1-cam" -panorama -panorama fast -resolution h -quality default -l from "0" -to "181" -l from "20" -h to "340"
Sensor
sensors: 3100' barometer translation rotation gps*
Barometer: 0.993226 bar 166.052 m
nav translation: -6.8412 m -0.4142 m 167.3703 m accuracies: 8.5330 m 8.5330 m 0.0000 m
nav rotation: 0.0000 0.0000 261.2572 accuracies: 0.0000 0.0000 15.0000
upside-down: no
GPS lat:44.449543 long:23.433500 satellites:9 height:206.6m hdop:1.0 vdop:1.2m hacc:3.9m vacc:4.4 flags:G3 'stand alone 3D solution'
north:4924684.919 m east:693625.774 m zone:34T
Initial pre position (3:outdoor)
-0.152 -0.988 0.000 7.423
0.988 -0.152 0.000 -10.593
0.000 0.000 1.000 4.075
0.000 0.000 0.000 1.000
```

Level system info: dynamic compensator available.



Scan position '24'

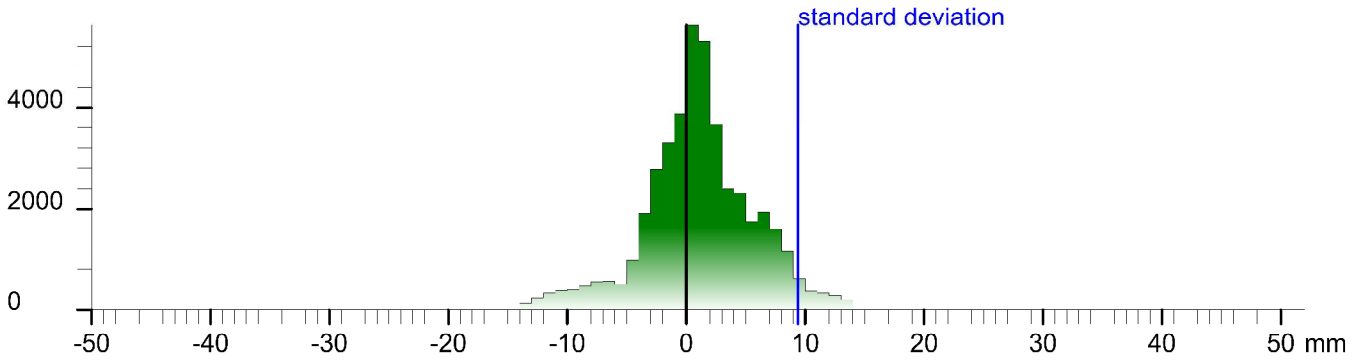
Scan position is member of group(s):
Status registration '[102h] registered with cloud to cloud'
Registration matrix:

```
0.514950 -0.857220 0.000512 1.9920 m  
0.857219 0.514950 0.000931 -9.0026 m  
-0.001062 -0.000041 0.999999 3.7614 m  
0.000000 0.000000 0.000000 1.0000
```

Result registration cloud to cloud standard deviation:9.4 mm

Deviation histogram

Points



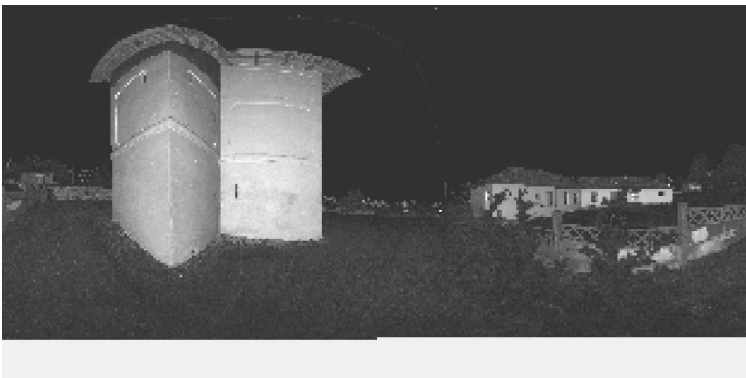
Scan '24'

Scanner 'Z+F IMAGER 5016' serial number '5016-0100' Firmware 9.0.3.6562-0
Scan resolution 'High' quality 'Normal'

Metadata **Value**
comment
operator

```
Scan command: -cst 1RCServer 5.0.3 -memorize 1 -file '24' -scans '24' -path 'C:\fs\Comcast\for' -project 'C:\fs\Comcast\for' -projectTemplate '' -compressor -nav -temperature 20 -camera '1-cam' -panorama -panorama fast -resolution h -quality default -f from 10 -to 181 -h from 120 -h to 1347  
Sensor  
sensors: 3100 ' barometer translation rotation gps'  
Barometer: 0.993012 bar 169.857 m  
nav translation: -6.1322 m 10.9190 m 169.3919 m accuracies: 11.3719 m 11.3719 m 0.0000 m  
nav rotation: 0.0000 0.0000 306.1138 accuracies: 0.0000 0.0000 15.0000  
upside-down: no  
GPS lat:44.449635 long:23.433388 satellites:6 height:206.6m hdop:1.9 vdop:1.6m hacc:10.0m vacc:10.0 flags:G3 'stand alone 3D solution'  
north:4924694.822 m east:693616.517 m zone:34T  
Initial pre position (3:outdoor)  
0.617 -0.787 0.000 -1.793  
0.787 0.617 0.000 -0.639  
0.000 0.000 1.000 6.097  
0.000 0.000 0.000 1.000
```

Level system info: dynamic compensator available.



Scan position '25'

Scan position is member of group(s):

Status registration '[102h] registered with cloud to cloud'

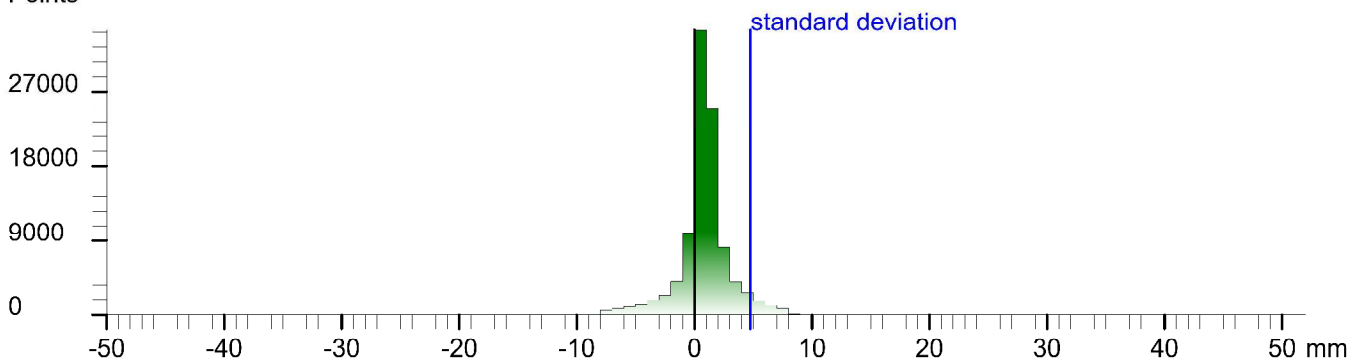
Registration matrix:

```
-0.308809 -0.951124 0.000373 -2.4834 m  
0.951124 -0.308809 -0.000201 -3.3426 m  
0.000306 0.000293 1.000000 4.5508 m  
0.000000 0.000000 0.000000 1.0000
```

Result registration cloud to cloud standard deviation:4.8 mm

Deviation histogram

Points



Scan '25'

Scanner 'Z+F IMAGER 5016' serial number '5016-0100' Firmware 9.0.3.6562-0

Scan resolution 'High' quality 'Normal'

Metadata Value comment operator

```
Scan command: -cst 1RCServer 5.0.3 -memorize 1 -file '25' -scans '25' -path 'C:\fs\CameraTest\for' -project 'C:\fs\CameraTest\for' -projectTemplate '' -compensator -nav -temperature '20' -camera '1-cam' -panorama -panorama fast -resolution h -quality default -f from '0' -to '181' -h from '20' -h to '340'  
Sensor  
sensors: 3100 ' barometer translation rotation gps'  
Barometer: 0.992867 bar 171.085 m  
nav translation: 4.2450 m 3.5516 m 170.5547 m accuracies: 7.8363 m 7.9363 m 0.0000 m  
nav rotation: 0.0000 0.0000 261.8365 accuracies: 0.0000 0.0000 15.0000  
upside-down: no  
GPS lat:44.449677 long:23.433319 satellites:8 height:211.6m hdop:1.3 vdoop:1.7m hacc:4.7m vacc:5.6 flags:G3 'stand alone 3D solution'  
Initial pre position (3:outdoor)  
-0.142 -0.990 0.000 -7.422  
0.990 -0.142 0.000 3.863  
0.000 0.000 1.000 7.259  
0.000 0.000 0.000 1.000
```

Level system info: dynamic compensator available.



Scan position '26'

Scan position is member of group(s):

Status registration '[102h] registered with cloud to cloud'

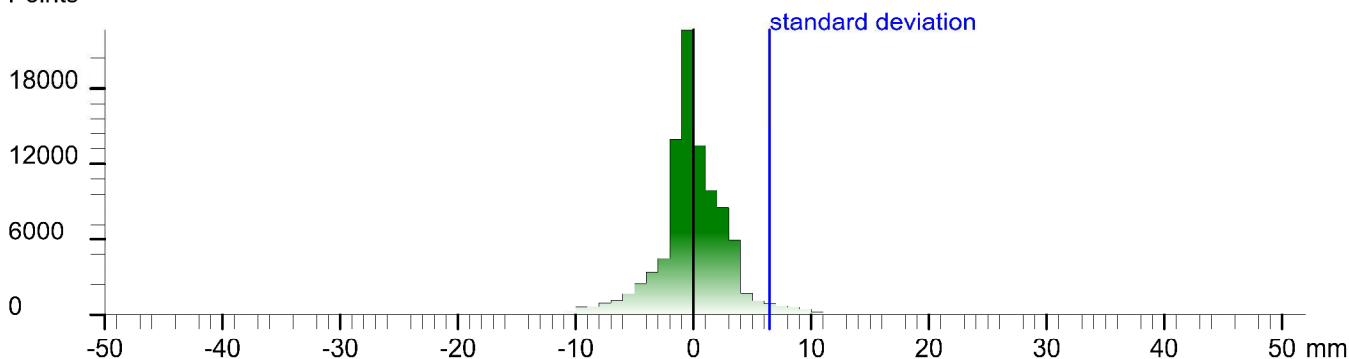
Registration matrix:

```
0.044190 -0.999023 -0.000511 2.9873 m
0.999023 0.044190 0.000721 2.5303 m
-0.000697 -0.000543 1.000000 4.6792 m
0.000000 0.000000 0.000000 1.0000
```

Result registration cloud to cloud standard deviation:6.5 mm

Deviation histogram

Points



Scan '26'

Scanner 'Z+F IMAGER 5016' serial number '5016-0100' Firmware 9.0.3.6562-0

Scan resolution 'High' quality 'Normal'

Metadata **Value**
comment
operator

```
Scan command: -cst 1,RCServer 5.0.3 -memorize 1 -file '26' -scans '26' -path 'C:\fs\CameraTestfor' -project 'C:\fs\CameraTestfor' -projectTemplate '' -compensator -nav -temperature '20' -camera '1-cam' -panorama -panorama fast -resolution h -quality default -f from '0' -to '181' -h from '20' -h to '340'
```

Sensor
sensors: 3100' barometer translation rotation gps'
Barometer: 0.992781 bar 171.814 m
nav translation: 3.6414 m 5.0063 m 171.2367 m accuracies: 8.2006 m 8.2006 m 0.0000 m
nav rotation: 0.0000 0.0000 282.0930 accuracies: 0.0000 0.0000 15.0000
upside-down: no
GPS lat:44.449711 long:23.433401 satellites:8 height:210.4m hdop:1.3 vdop:1.4m hacc:5.3m vacc:6.9 flags:G3'stand alone 3D solution'
north:4924703.328 m east:693617.327 m zone:34T
Initial pre position (3:outdoor)
0.209 -0.978 0.000 -1.010
0.978 0.209 0.000 7.833
0.000 0.000 1.000 7.941
0.000 0.000 0.000 1.000

Level system info: dynamic compensator available.



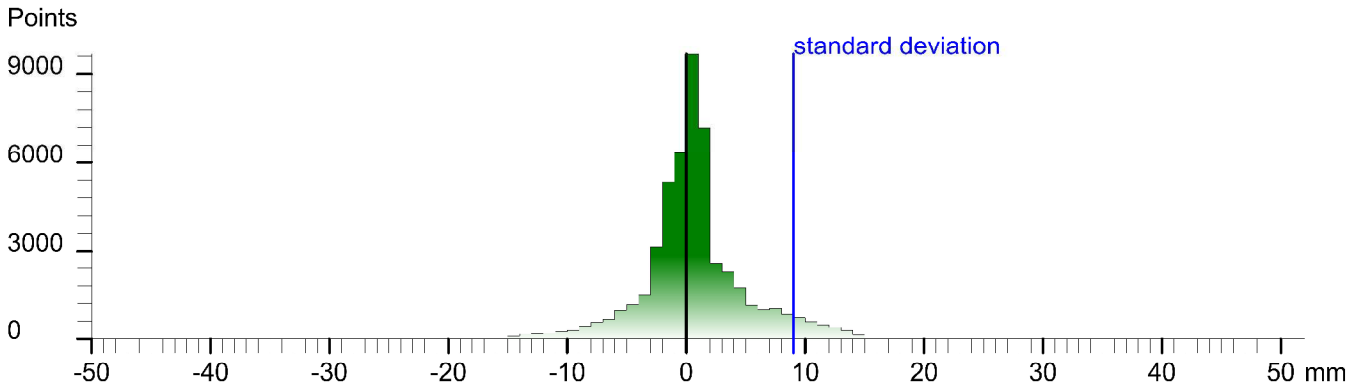
Scan position '27'

Scan position is member of group(s):
Status registration '[102h] registered with cloud to cloud'
Registration matrix:

```
0.993435  0.114389  0.001243  27.4215 m  
-0.114389 0.993436  0.000580  14.9722 m  
-0.001168 -0.000718 0.999999  2.0234 m  
0.000000  0.000000  0.000000  1.0000
```

Result registration cloud to cloud standard deviation:9.0 mm

Deviation histogram



Scan '27'

Scanner 'Z+F IMAGER 5016' serial number '5016-0100' Firmware 9.0.3.6562-0
Scan resolution 'High' quality 'Normal'

Metadata **Value**
comment
operator

```
Scan command: -cst 1,RCServer 5.0.3*-memorize 1 -file '27' -scans '27' -path 'C:\fs\CameraTestfor*' -project 'C:\fs\CameraTestfor*' -projectTemplate "" -compensator -nav -temperature '20' -camera '1-cam' -panorama -panorama fast -resolution h -quality default -f from '0' -to '181' -h from '20' -h to '340'  
Sensor  
sensors: 3100' barometer translation rotation gps'  
Barometer: 0.993087 bar 169.229 m  
nav translation: 20.9794 m 10.4518 m 168.8637 m accuracies: 16.9581 m 16.9581 m 0.0000 m  
nav rotation: 0.0000 0.0000 13.6909 accuracies: 0.0000 0.0000 15.0000  
upside-down: no  
GPS lat:44.449787 long:23.433741 satellites:7 height:208.3m hdop:1.3 vdop:1.9m hacc:5.5m vacc:6.5 flags:G3 'stand alone 3D solution'  
north:4924712.607 m east:693644.089 m zone:34T  
Initial pre position (3:outdoor)  
0.972 0.237 0.000 25.792  
-0.237 0.972 0.000 17.080  
0.000 0.000 1.000 5.568  
0.000 0.000 0.000 1.000
```

Level system info: dynamic compensator available.



Scan position '28'

Scan position is member of group(s):

Status registration '[122h] preregistered with cloud to cloud'

Registration matrix:

-0.811115	0.584886	0.000385	47.8062 m
-0.584886	-0.811116	-0.000340	-3.5532 m
0.000115	-0.000501	1.000000	-2.0755 m
0.000000	0.000000	0.000000	1.0000

Scan '28'

Scanner 'Z+F IMAGER 5016' serial number '5016-0100' Firmware 9.0.3.6562-0

Scan resolution 'High' quality 'Normal'

Metadata	Value
----------	-------

comment
operator

Scan command: -ch1 "LRCServer 5.0.3" -memorize 1 -file "28" -scanspos "28" -path "C:\fs\Camera\test\or" -project "C:\fs\Camera\test\or" -projectfile " " -compensator -nav -temperature "20" -camera "l-cam" -panoramaparams fast-resolution h -quality default -f from "0" -to "181" -h from "20" -h to "340"

Sensor

sensors: 3100 ' barometer translation rotation gps'
Barometer: 0.993490 bar 165.82 m
nav translation: 19.7617 m -11.1263 m 165.4264 m accuracies: 16.6167 m 16.6167 m 0.0000 m
nav rotation: 0.0000 0.0000 146.2346 accuracies: 0.0000 0.0000 15.0000
upside-down: no
GPS lat:44.449593 long:23.433956 satellites:8 height:204.2m hdop:1.0 vdop:1.5m haacc:5.7m vacc:6.1 flags:G3 'stand alone 3D solution'
north:4924691,507 m east:693661,881 m zone:34T
Initial pre position (3:outdoor)
-0.831 0.556 0.000 43.541
-0.556 -0.831 0.000 -3.960
0.000 0.000 1.000 2.131
0.000 0.000 0.000 1.000

Level system info: dynamic compensator available.



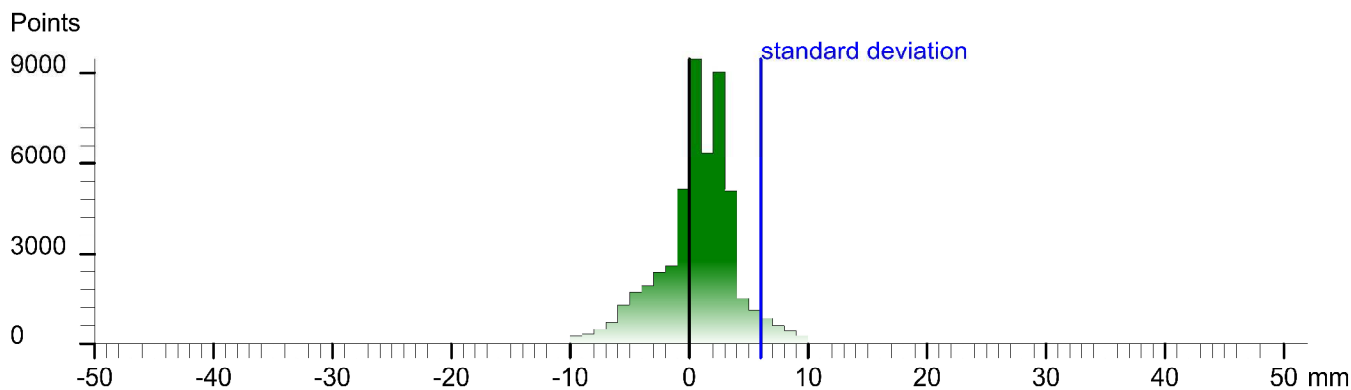
Scan position '29'

Scan position is member of group(s):
Status registration '[102h] registered with cloud to cloud'
Registration matrix:

```
-0.894472  0.447124  0.000102  27.4680 m  
-0.447124 -0.894472  0.000280 -26.7696 m  
0.000216  0.000205  1.000000  -0.8685 m  
0.000000  0.000000  0.000000  1.0000
```

Result registration cloud to cloud standard deviation:6.0 mm

Deviation histogram



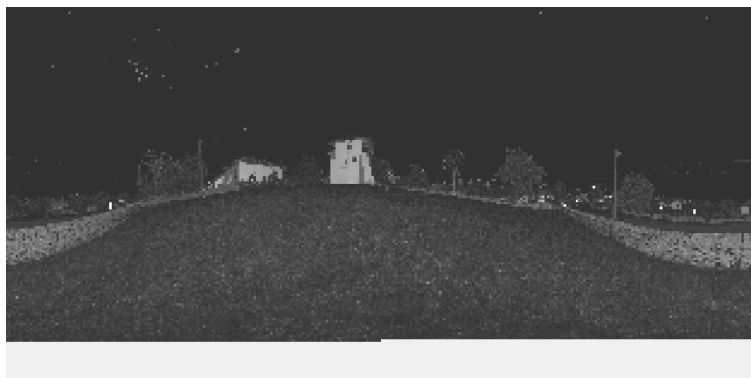
Scan '29'

Scanner 'Z+F IMAGER 5016' serial number '5016-0100' Firmware 9.0.3.6562-0
Scan resolution 'High' quality 'Normal'

Metadata	Value
comment	
operator	

```
Scan command: -crl "LRCServer 5.0.3" -memorize 1 -file "29" -scans "29" -path "C:\fs\Comcast\for" -project "C:\fs\Comcast\for" -projectTemplate "" -compressor -nav -temperature "20" -camera "1-cam" -panorama -panorama fast -resolution h -quality default -f from "0" -to "181" -h from 1 "20" -h to 1 "340"  
Sensor  
sensors: 3100' barometer translation rotation gps  
Barometer: 0.993305 bar 167.384 m  
nav translation: -12.2712 m -21.0946 m 166.8465 m accuracies: 17.3535 m 17.3535 m 0.0000 m  
nav rotation: 0.0000 0.0000 155.1973 accuracies: 0.0000 0.0000 15.0000  
upside-down: no  
GPS lat:44.449421 long:23.433647 satellites:9 height:203.5m hdop:1.0 vdop:1.3m hacc:3.8m vacc:4.3 flags:G3 'stand alone 3D solution'  
north:4924671.707 m east:693637.863 m zone:34T  
Initial pre position (3:outdoor)  
-0.908 0.419 0.000 19.523  
-0.419 -0.908 0.000 -23.797  
0.000 0.000 1.000 3.551  
0.000 0.000 0.000 1.000
```

Level system info: dynamic compensator available.



Scan position '3'

Scan position is member of group(s):

Status registration '[102h] registered with cloud to cloud'

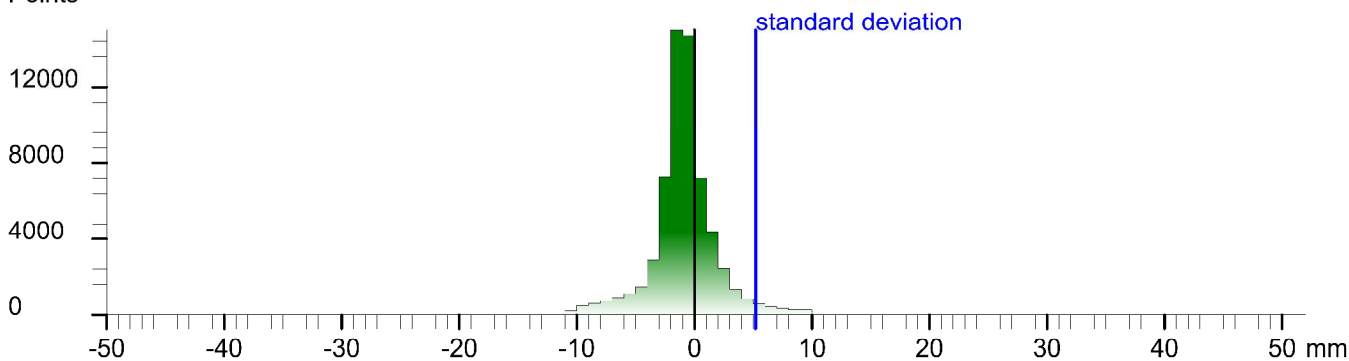
Registration matrix:

```
-0.554034 -0.832494 0.000697 8.4289 m  
0.832493 -0.554035 -0.000842 -6.0731 m  
0.001087 0.000113 0.999999 3.1249 m  
0.000000 0.000000 0.000000 1.0000
```

Result registration cloud to cloud standard deviation:5.2 mm

Deviation histogram

Points



Scan '3'

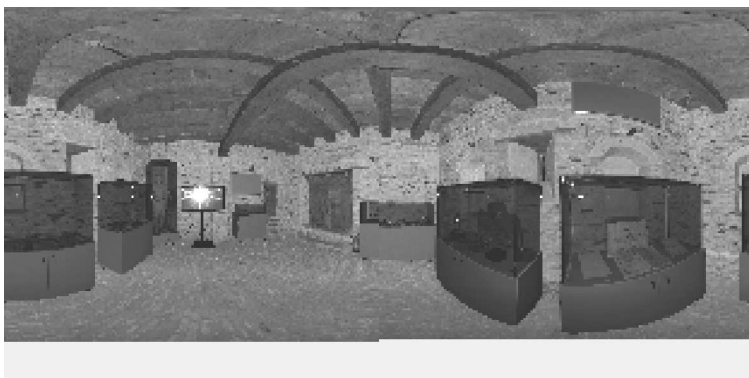
Scanner 'Z+F IMAGER 5016' serial number '5016-0100' Firmware 9.0.3.6562-0

Scan resolution 'High' quality 'Normal'

Metadata	Value
comment	
operator	

```
Scan command: -cst "LRCServer 5.0.3" -memorize 1 -file "3" -scanpos "3" -path "C:\Data\Cematestfor" -project "C:\Data\Cematestfor" -projectTemplate "" -compensator-nav -temperature "20" -camera "cam" -panoramaparams fast-resolution h -quality default -frown "0" -to "181" -frown1 "20" -hmi "340"  
Sensor  
sensors: 3096 " barometer translation rotation"  
Barometer: 0.994057 bar 161.018 m  
nav translation: -1.9733 m -0.5450 m 161.3437 m accuracies: 6.1393 m 6.1393 m 0.0000 m  
nav rotation: 0.0000 0.0000 239.4370 accuracies: 0.0000 0.0000 15.0000  
upside-down: no  
Initial pre position (0:indoor)  
-0.508 -0.861 0.000 -0.573  
0.861 -0.508 0.000 1.187  
0.000 0.000 1.000 -1.390  
0.000 0.000 0.000 1.000
```

Level system info: dynamic compensator available.



Scan position '30'

Scan position is member of group(s):

Status registration '[102h] registered with cloud to cloud'

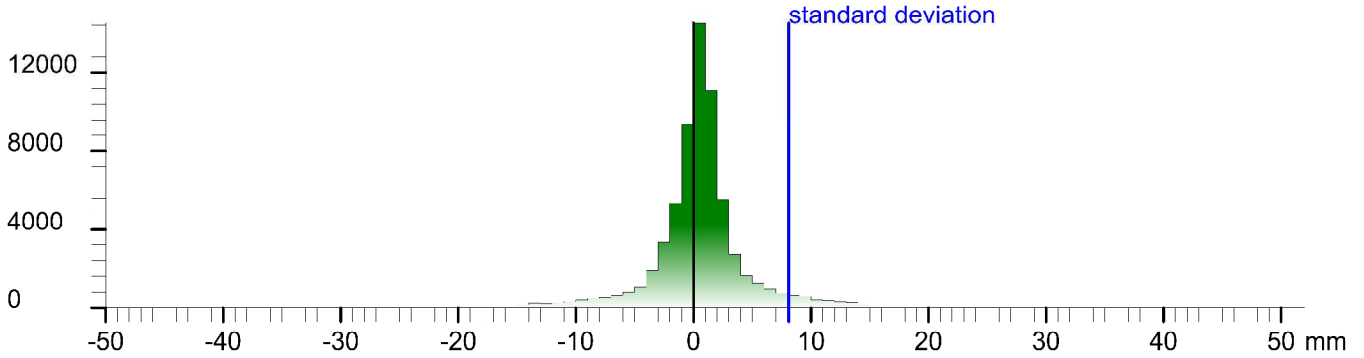
Registration matrix:

```
0.472442 -0.881361 0.001327 -19.2563 m
0.881361 0.472443 0.000607 4.2209 m
-0.001162 0.000883 0.999999 5.9891 m
0.000000 0.000000 0.000000 1.0000
```

Result registration cloud to cloud standard deviation:8.1 mm

Deviation histogram

Points



Scan '30'

Scanner 'Z+F IMAGER 5016' serial number '5016-0100' Firmware 9.0.3.6562-0

Scan resolution 'High' quality 'Normal'

Metadata	Value
comment	
operator	

```
Scan command: -cst 1LRCServer 5.0.3 -memorize 1 -file '30' -scans '30' -path 'C:\fs\CameraTestfor' -project 'C:\fs\CameraTestfor' -projectTemplate '' -compensator -nav -temperature '20' -camera '1-cam' -panorama -panorama fast -resolution h -quality default -l from '0' -to '181' -l from '20' -h to '340'
```

Sensor
sensors: 3100' barometer translation rotation gps'
Barometer: 0.992405 bar 175 m
nav translation: -4.4321 m -23.8187 m 174.1149 m accuracies: 8.4559 m 8.4559 m 0.0000 m
nav rotation: 0.0000 0.0000 307.0586 accuracies: 0.0000 0.0000 15.0000
upside-down: no
GPS lat:44.449776 long:23.433155 satellites:7 height:209.6m hdop:1.3 vdop:1.7m hacc:5.0m vacc:5.7 flags:G3 'stand alone 3D solution'
north:4924709.949 m east:693597.535 m zone:34T
Initial pre position (3:outdoor)
0.603 -0.798 0.000 -20.798
0.798 0.603 0.000 14.471
0.000 0.000 1.000 10.820
0.000 0.000 0.000 1.000

Level system info: dynamic compensator available.



Scan position '31'

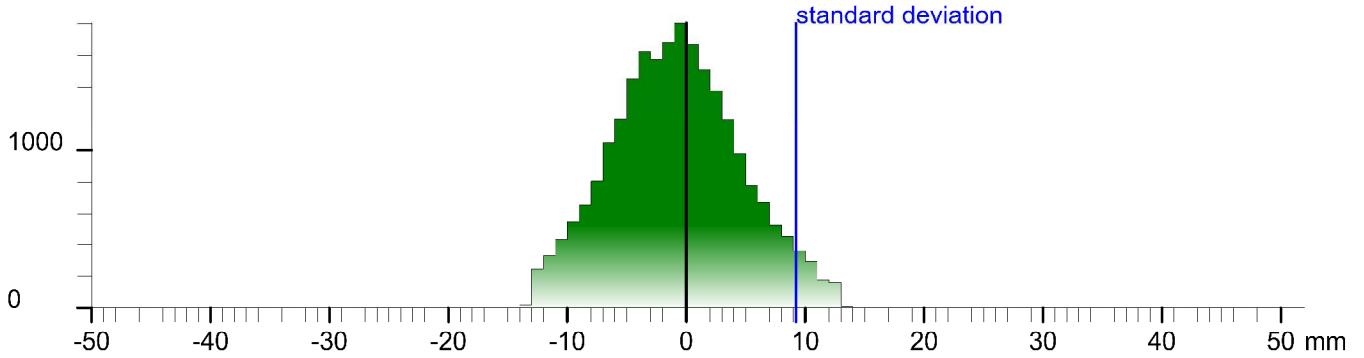
Scan position is member of group(s):
Status registration '[102h] registered with cloud to cloud'
Registration matrix:

```
0.497997 0.867178 0.000851 8.8813 m
-0.867178 0.497997 -0.000512 0.2367 m
-0.000868 -0.000483 1.000000 2.4500 m
0.000000 0.000000 0.000000 1.0000
```

Result registration cloud to cloud standard deviation:9.2 mm

Deviation histogram

Points



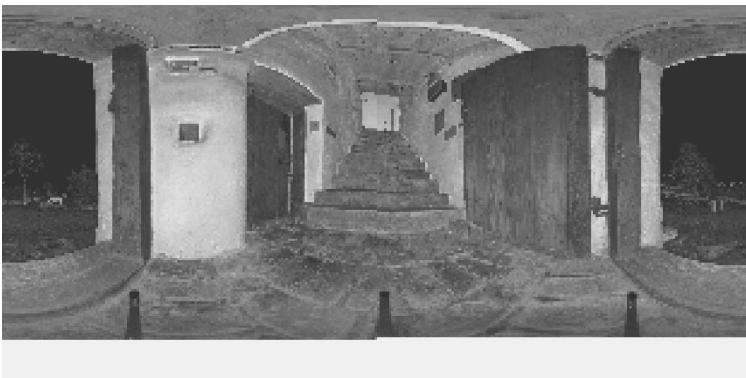
Scan '31'

Scanner 'Z+F IMAGER 5016' serial number '5016-0100' Firmware 9.0.3.6562-0
Scan resolution 'High' quality 'Normal'

Metadata **Value**
comment
operator

```
Scan command: -cst 1LRCServer 5.0.3 -memorize 1 -file '31' -scans '31' -path 'C:\fs\CameraTestfor' -project 'C:\fs\CameraTestfor' -projectTemplate '' -compressor -nav -temperature '20' -camera '1-cam' -panoramaiparams fast-resolution h -quality default -f from '0' to '181' -h from '20' to '1347'  
Sensor  
sensors: 3100 ' barometer translation rotation gps'  
Barometer: 0.992814 bar 171.537 m  
nav translation: -26.3705 m -9.3771 m 171.0251 m accuracies: 19.1864 m 19.1864 m 0.0000 m  
nav rotation: 0.0000 0.0000 66.4777 accuracies: 0.0000 0.0000 15.0000  
upside-down: no  
GPS lat:44.449692 long:23.433453 satellites:3 height:203.5m hdop:3.8 vdop:1.0m hacc:16.0m vacc:9.5 flags:G2 'stand alone 2D solution'  
north:4924701.332 m east:693621.488 m zone:34T  
Initial pre position (0:indoor)  
0.399 0.917 0.000 -47.169  
-0.917 0.399 0.000 5.094  
0.000 0.000 1.000 7.730  
0.000 0.000 0.000 1.000
```

Level system info: dynamic compensator available.



Scan position '32'

Scan position is member of group(s):

Status registration '[102h] registered with cloud to cloud'

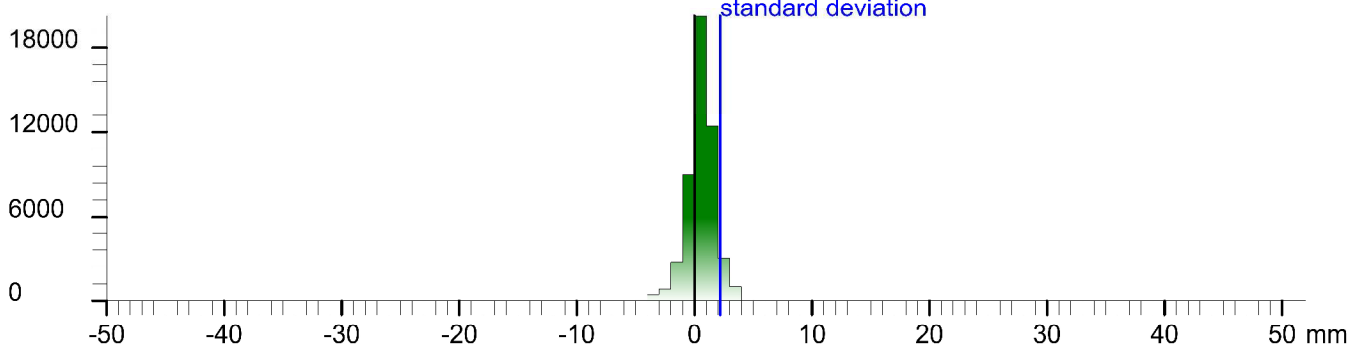
Registration matrix:

0.061750	-0.998088	0.002792	7.8646 m
0.998078	0.061733	-0.005474	-2.9450 m
0.005291	0.003124	0.999981	10.2837 m
0.000000	0.000000	0.000000	1.0000

Result registration cloud to cloud standard deviation:2.2 mm

Deviation histogram

Points



Scan '32'

Scanner 'Z+F IMAGER 5016' serial number '5016-0100' Firmware 9.0.3.6562-0

Scan resolution 'High' quality 'Normal'

Metadata	Value
comment	
operator	

```
Scan command: -cst 1LRCServer 5.0.3 -memorize 1 -file '32' -scanspos '32' -path 'C:\fs\CameraTestfor' -project 'C:\fs\CameraTestfor' -projectTemplate '' -nav -temperature '20' -camera 'l-cam' -panoramaparams list -resolution h -quality default -from '1' -to '181' -infront '20' -into '340'
```

Sensor
sensors: 3096 'barometer translation rotation'
Barometer: 0.991903 bar 179.245 m
nav translation: 1.6036 m 1.6036 m 178.6603 m accuracies: 10.1752 m 10.1752 m 0.0000 m
nav rotation: 0.0000 0.0000 280.3999 accuracies: 0.0000 0.0000 15.0000
upside-down: no
Initial pre position (0:indoor)
0.181 -0.984 0.000 -45.565
0.984 0.181 0.000 6.697
0.000 0.000 1.000 15.365
0.000 0.000 0.000 1.000

Level system info: no information about the level system stored in the zfs header



Scan position '33'

Scan position is member of group(s):

Status registration '[102h] registered with cloud to cloud'

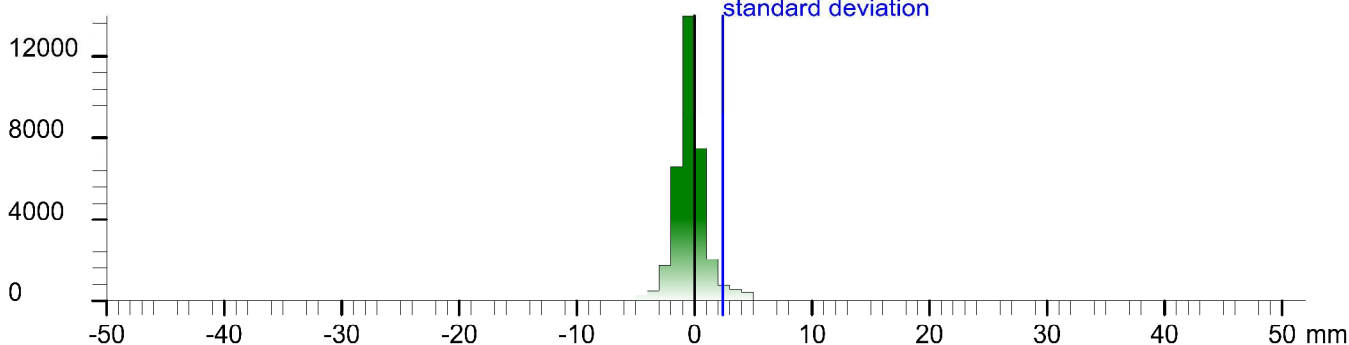
Registration matrix:

```
0.314553 -0.949234 0.003207 6.7131 m
0.949232 0.314536 -0.005019 -1.5070 m
0.003756 0.004623 0.999982 10.3305 m
0.000000 0.000000 0.000000 1.0000
```

Result registration cloud to cloud standard deviation:2.4 mm

Deviation histogram

Points



Scan '33'

Scanner 'Z+F IMAGER 5016' serial number '5016-0100' Firmware 9.0.3.6562-0

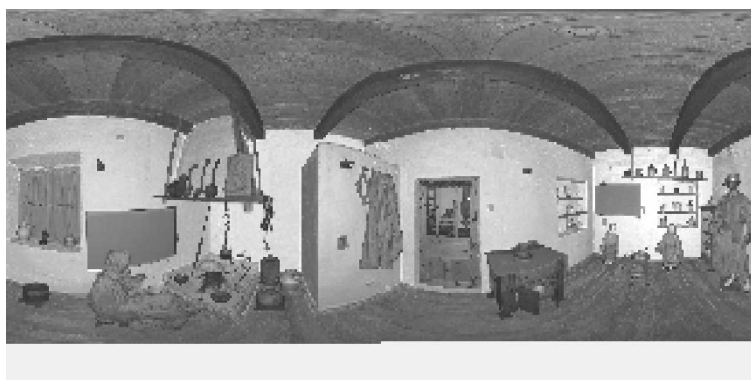
Scan resolution 'High' quality 'Normal'

Metadata **Value**
comment
operator

```
Scan command: -cst 1RCServer 5.0.3 -memorize 1 -file '33' -scans '33' -path 'C:\fs\CameraTestfor' -project 'C:\fs\CameraTestfor' -projectTemplate '' -nav -temperature '20' -camera 'zcam' -panoramaparams list-resolution h-quality default -from '1' -to '181' -front '20' -int '1340'
```

Sensor
sensors: 3096 ' barometer translation rotation'
Barometer: 0.991841 bar 179.771 m
nav translation: -0.1641 m 0.5504 m 178.9903 m accuracies: 5.4378 m 5.4378 m 0.0000 m
nav rotation: 0.0000 0.0000 296.0166 accuracies: 0.0000 0.0000 15.0000
upside-down: no
Initial pre position (0:indoor)
0.470 -0.883 0.000 -45.729
0.883 0.470 0.000 7.348
0.000 0.000 1.000 15.695
0.000 0.000 0.000 1.000

Level system info: no information about the level system stored in the zfs header



Scan position '34'

Scan position is member of group(s):

Status registration '[102h] registered with cloud to cloud'

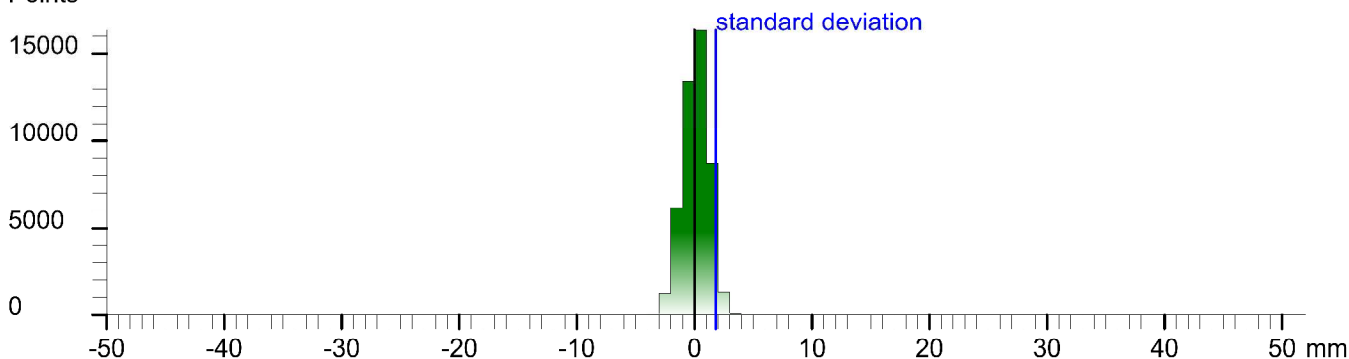
Registration matrix:

```
-0.501732 -0.865017 0.003118 5.4329 m  
0.864990 -0.501742 -0.006863 -3.2141 m  
0.007501 -0.000746 0.999972 10.3270 m  
0.000000 0.000000 0.000000 1.0000
```

Result registration cloud to cloud standard deviation: 1.8 mm

Deviation histogram

Points



Scan '34'

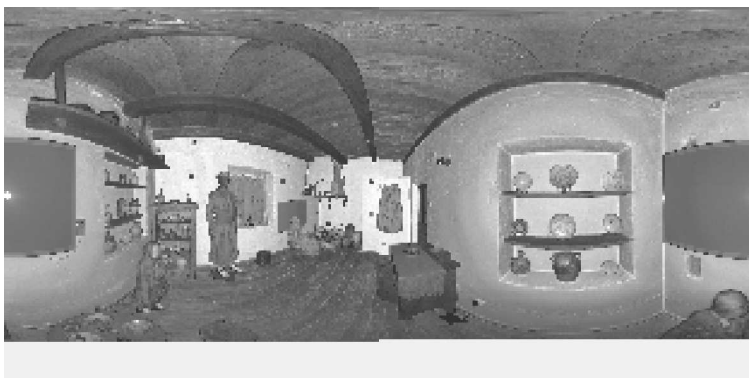
Scanner 'Z+F IMAGER 5016' serial number '5016-0100' Firmware 9.0.3.6562-0

Scan resolution 'High' quality 'Normal'

Metadata	Value
comment	
operator	

```
Scan command: -cst 1LRCServer 5.0.3 -memorize 1 -file '34' -scans '34' -path 'C:\fs\CameraTestfor' -project 'C:\fs\CameraTestfor' -projectTemplate '' -nav -temperature '20' -camera 'l-cam' -panoramaParams list-resolution h-quality default -from '1' -to '181' -front '20' -int1 '340'  
Sensor  
sensors: 3096 'barometer translation rotation'  
Barometer: 0.991778 bar 180.309 m  
nav translation: -0.7189 m 0.3100 m 179.8568 m accuracies: 5.5080 m 5.5080 m 0.0000 m  
nav rotation: 0.0000 0.0000 244.2857 accuracies: 0.0000 0.0000 15.0000  
upside-down: no  
Initial pre position (0:indoor)  
-0.434 -0.901 0.000 -46.448  
0.901 -0.434 0.000 7.658  
0.000 0.000 1.000 16.561  
0.000 0.000 0.000 1.000
```

Level system info: no information about the level system stored in the zfs header



Scan position '35'

Scan position is member of group(s):

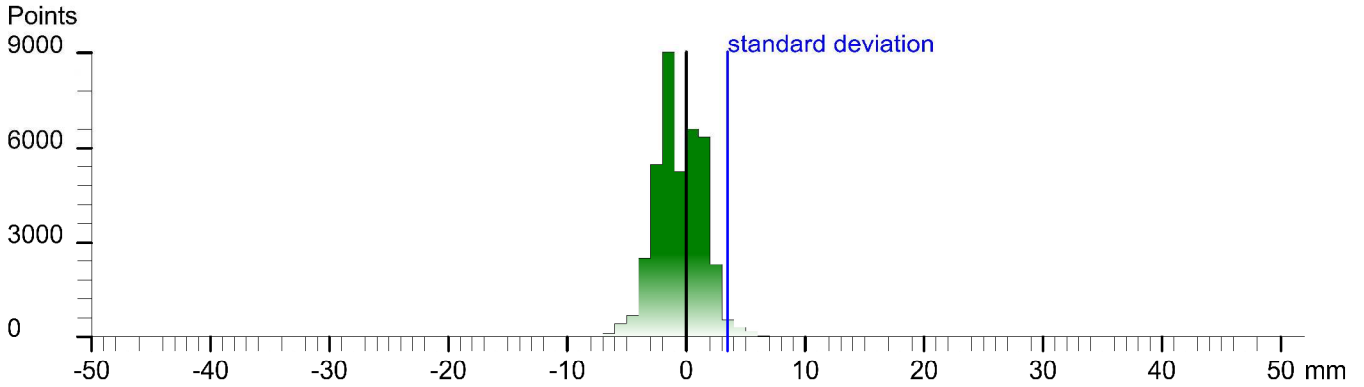
Status registration '[102h] registered with cloud to cloud'

Registration matrix:

```
0.421316 -0.906158 0.037007 7.7650 m
0.906903 0.420766 -0.021966 -0.1319 m
0.004334 0.042816 0.999074 9.2431 m
0.000000 0.000000 0.000000 1.0000
```

Result registration cloud to cloud standard deviation:3.5 mm

Deviation histogram



Scan '35'

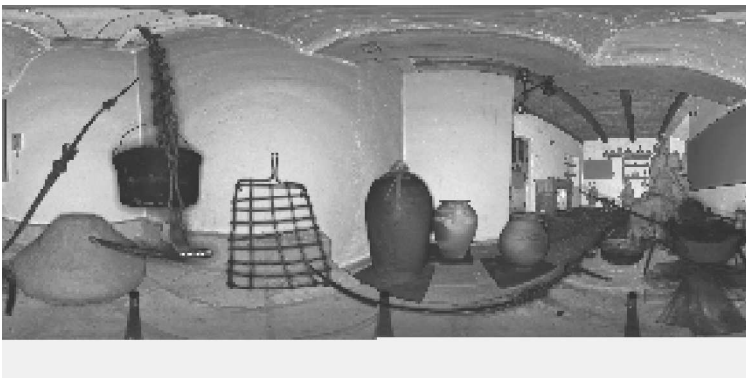
Scanner 'Z+F IMAGER 5016' serial number '5016-0100' Firmware 9.0.3.6562-0

Scan resolution 'High' quality 'Normal'

Metadata **Value**
comment
operator

```
Scan command: -cst "LRCServer 5.0.3" -memorize 1 -file "35" -scans "35" -path "C:\fs\CameraTestfor" -project "C:\fs\CameraTestfor" -projectTemplate "" -nav -temperature "20" -camera "l-cam" -panoramaParams list -resolution h -quality default -from "1" -to "181" -front "20" -int "1340"
Sensor
sensors: 3096 "barometer translation rotation"
Barometer: 0.991860 bar 179.616 m
nav translation: 1.3007 m 1.5305 m 179.1259 m accuracies: 6.2171 m 6.2171 m 0.0017 m
nav rotation: 0.0000 0.0000 297.6371 accuracies: 0.0000 0.0000 15.0000
upside-down: no
Initial pre position (0:indoor)
0.464 -0.886 0.000 -45.147
0.886 0.464 0.000 9.188
0.000 0.000 1.000 15.831
0.000 0.000 0.000 1.000
```

Level system info: no information about the level system stored in the zfs header



Scan position '36'

Scan position is member of group(s):

Status registration '[102h] registered with cloud to cloud'

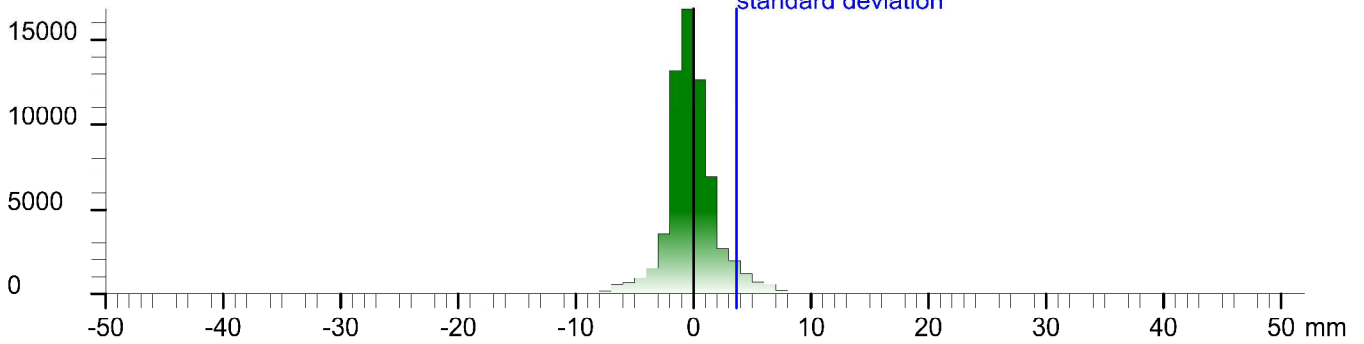
Registration matrix:

```
-0.413255  0.910603  0.004753  12.0230 m  
-0.910604 -0.413218 -0.007230 -4.0807 m  
-0.004619 -0.007316  0.999963  10.1938 m  
0.000000  0.000000  0.000000  1.0000
```

Result registration cloud to cloud standard deviation:3.7 mm

Deviation histogram

Points



Scan '36'

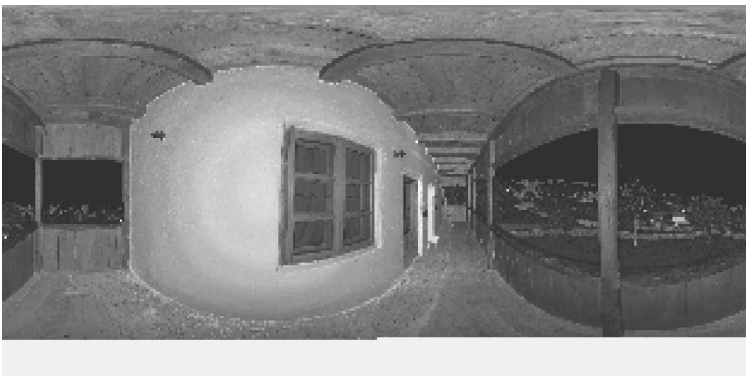
Scanner 'Z+F IMAGER 5016' serial number '5016-0100' Firmware 9.0.3.6562-0

Scan resolution 'High' quality 'Normal'

Metadata **Value**
comment
operator

```
Scan command: -cst "LRCServer 5.0.3" -memorize 1 -file "36" -scans "36" -path "C:\fs\CameraTestfor" -project "C:\fs\CameraTestfor" -projectTemplate "" -nav -temperature "20" -camera "l-scant" -panoramaparams list -resolution h -quality default -from "1" -to "181" -front "20" -int "1340"  
Sensor  
sensors: 3100 ' barometer translation rotation gps'  
Barometer: 0.991689 bar 181.058 m  
nav translation: -8.5553 m 2.7273 m 180.5475 m accuracies: 9.7810 m 9.7810 m 0.0000 m  
nav rotation: 0.0000 0.0000 117.9405 accuracies: 0.0000 0.0000 15.0000  
upside-down: no  
GPS lat:44.449574 long:23.433580 satellites:4 height:206.6m hdop:3.8 vdop:3.2m hacc:3.4m vacc:17.0 flags:G3 'stand alone 3D solution'  
north:4924688.499 m east:693632.047 m zone:34T  
Initial pre position (0:indoor)  
-0.469 0.883 0.000 -53.703  
-0.883 -0.469 0.000 11.916  
0.000 0.000 1.000 17.252  
0.000 0.000 0.000 1.000
```

Level system info: no information about the level system stored in the zfs header



Scan position '37'

Scan position is member of group(s):

Status registration '[102h] registered with cloud to cloud'

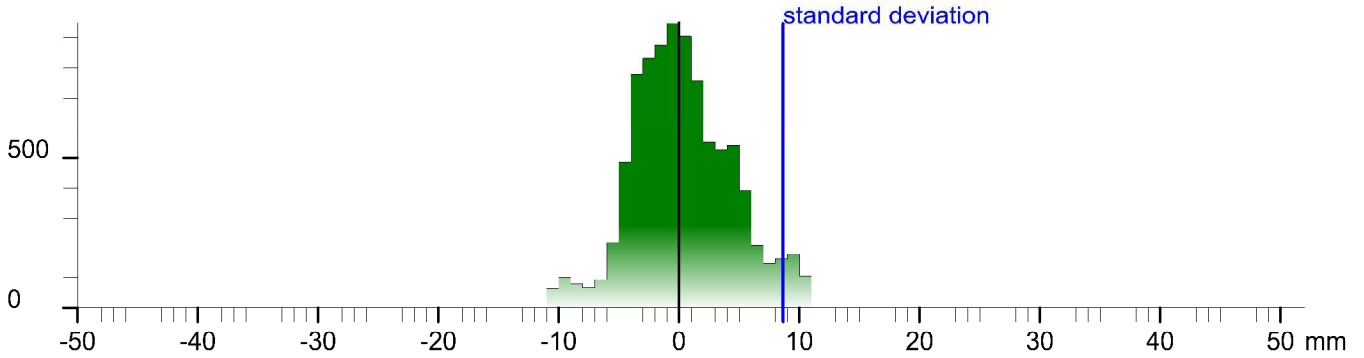
Registration matrix:

```
-0.106647 -0.994291 0.003518 10.5215 m
0.994282 -0.106664 -0.005198 -0.9151 m
0.005543 0.002943 0.999980 10.1763 m
0.000000 0.000000 0.000000 1.0000
```

Result registration cloud to cloud standard deviation:8.6 mm

Deviation histogram

Points



Scan '37'

Scanner 'Z+F IMAGER 5016' serial number '5016-0100' Firmware 9.0.3.6562-0

Scan resolution 'High' quality 'Normal'

Metadata	Value
comment	
operator	

```
Scan command: -cst "LRCServer 5.0.3" -memorize 1 -file "37" -scans "37" -path "C:\fs\CameraTest\4" -project "C:\fs\CameraTest\4" -projectTemplate "" -nav -temperature "20" -camera "l-cam" -panoramaParams list-resolution h-quality default-46cm "1" -to "181" -infront "20" -into "340"
```

Sensor

```
sensors: 3096 "barometer translation rotation"
Barometer: 0.991636 bar 181.508 m
nav translation: -0.5708 m 0.9903 m 181.0648 m accuracies: 5.6808 m 5.6808 m 0.0000 m
nav rotation: 0.0000 0.0000 265.0430 accuracies: 0.0000 0.0000 15.0000
upside-down: no
Initial pre position (0:indoor)
-0.086 -0.996 0.000 -54.273
0.996 -0.086 0.000 12.906
0.000 0.000 1.000 17.769
0.000 0.000 0.000 1.000
```

Level system info: no information about the level system stored in the zfs header



Scan position '38'

Scan position is member of group(s):

Status registration '[102h] registered with cloud to cloud'

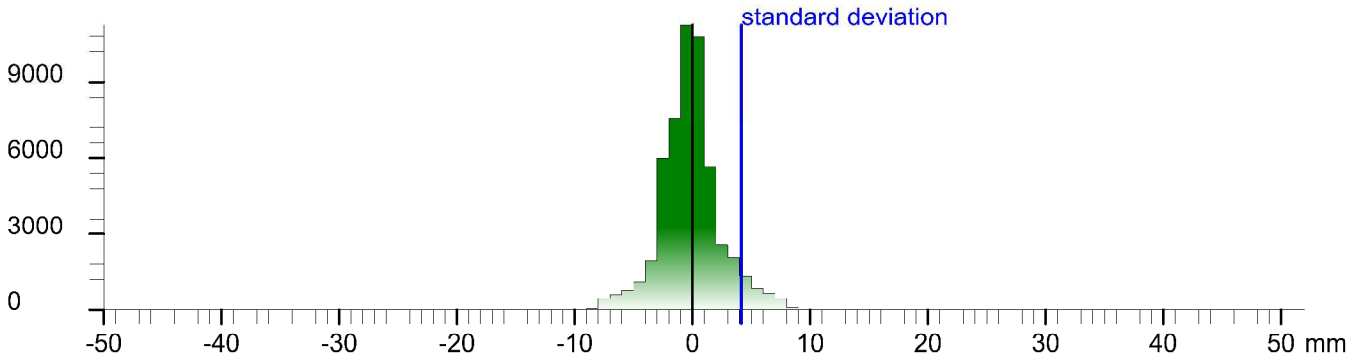
Registration matrix:

```
-0.929808 0.368032 0.003017 8.4754 m
-0.368044 -0.929786 -0.006383 2.2517 m
0.000456 -0.007046 0.999975 10.1719 m
0.000000 0.000000 0.000000 1.0000
```

Result registration cloud to cloud standard deviation:4.1 mm

Deviation histogram

Points



Scan '38'

Scanner 'Z+F IMAGER 5016' serial number '5016-0100' Firmware 9.0.3.6562-0

Scan resolution 'High' quality 'Normal'

Metadata **Value**
comment
operator

```
Scan command: -cst "LRCServer 5.0.3" -memorize 1 -file "38" -scans "38" -path "C:\fs\CameraTestfor" -project "C:\fs\CameraTestfor" -projectTemplate "" -nav -temperature "20" -camera "l-cam" -panoramaparams list -resolution h -quality default -from "1" -to "181" -front "20" -int "1340"
Sensor
sensors: 3100 ' barometer translation rotation gps'
Barometer: 0.991586 bar 181.937 m
nav translation: -1.5343 m -0.6284 m 181.3328 m accuracies: 5.9603 m 5.9603 m 0.0000 m
nav rotation: 0.0000 0.0000 159.7538 accuracies: 0.0000 0.0000 15.0000
upside-down: no
GPS lat:44.449680 long:23.433718 satellites:4 height:187.8m hdop:5.3 vdop:1.0m hacc:7.8m vacc:22.0 flags:G2 'stand alone 2D solution'
north:4924700.688 m east:693642.621 m zone:34T
Initial pre position (3:outdoor)
-0.938 0.346 0.000 -55.808
-0.346 -0.938 0.000 12.278
0.000 0.000 1.000 18.037
0.000 0.000 0.000 1.000
```

Level system info: no information about the level system stored in the zfs header



Scan position '39'

Scan position is member of group(s):

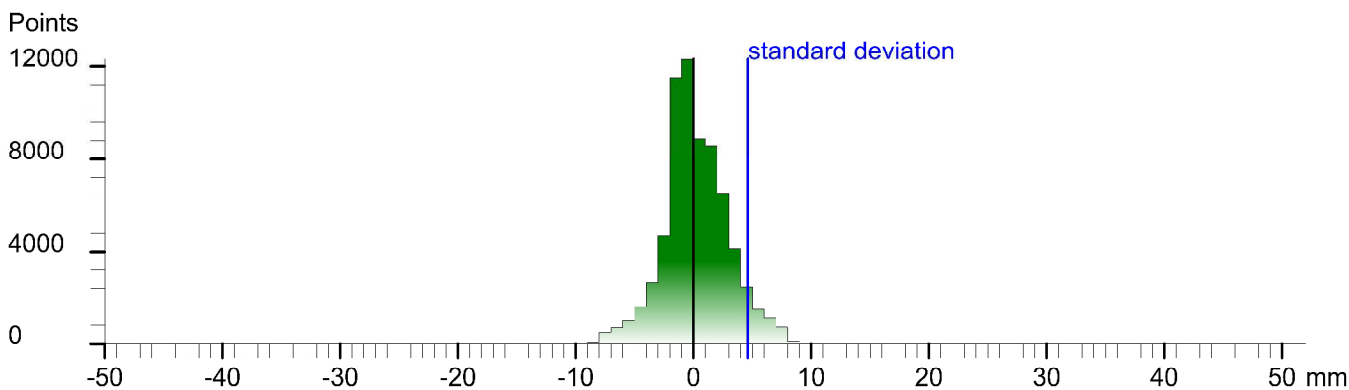
Status registration '[102h] registered with cloud to cloud'

Registration matrix:

```
-0.973066  0.230515  0.002454  4.9387 m
-0.230528 -0.973024 -0.009043  0.1532 m
0.000303  -0.009365  0.999956  10.2696 m
0.000000  0.000000  0.000000  1.0000
```

Result registration cloud to cloud standard deviation:4.6 mm

Deviation histogram



Scan '39'

Scanner 'Z+F IMAGER 5016' serial number '5016-0100' Firmware 9.0.3.6562-0

Scan resolution 'High' quality 'Normal'

Metadata	Value
comment	
operator	

```
Scan command: -cst 1LRCServer 5.0.3 -memorize 1 -file '39' -scans '39' -path 'C:\fs\CameraTestfor' -project 'C:\fs\CameraTestfor' -projectTemplate '' -nav -temperature '20' -camera '1-cam1' -panoramaparams list-resolution h-quality default-46cm '1' -to '181' -infront '20' -into '340'
```

Sensor
sensors: 3096 ' barometer translation rotation'
Barometer: 0.991554 bar 182.209 m
nav translation: -1.4457 m -2.1932 m 181.9320 m accuracies: 6.4274 m 6.4274 m 0.0000 m
nav rotation: 0.0000 0.0000 170.0419 accuracies: 0.0000 0.0000 15.0000
upside-down: no
Initial pre position (3:outdoor)
-0.985 0.173 0.000 -57.253
-0.173 -0.985 0.000 10.085
0.000 0.000 1.000 18.637
0.000 0.000 0.000 1.000

Level system info: no information about the level system stored in the zfs header



Scan position '4'

Scan position is member of group(s):

Status registration '[102h] registered with cloud to cloud'

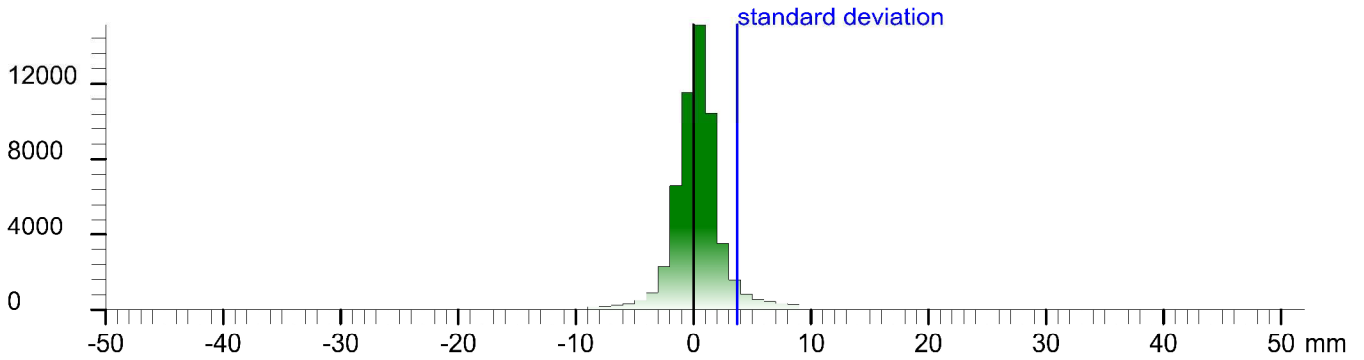
Registration matrix:

```
0.091172 -0.995835 -0.000162 8.8609 m
0.995835 0.091172 0.000115 -1.1317 m
-0.000100 -0.000171 1.000000 3.4577 m
0.000000 0.000000 0.000000 1.0000
```

Result registration cloud to cloud standard deviation:3.7 mm

Deviation histogram

Points



Scan '4'

Scanner 'Z+F IMAGER 5016' serial number '5016-0100' Firmware 9.0.3.6562-0

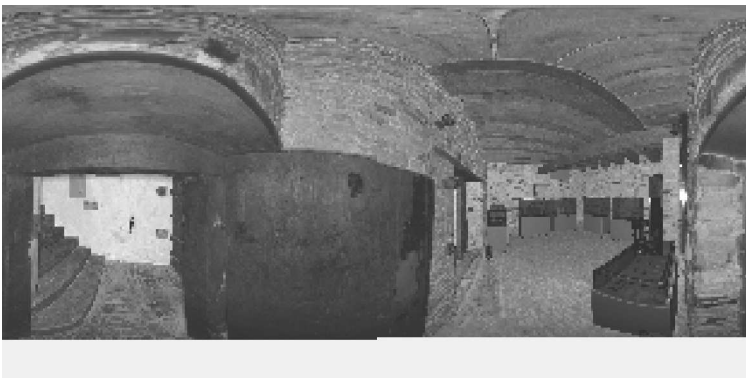
Scan resolution 'High' quality 'Normal'

Metadata	Value
comment	
operator	

Scan command: -cst 1 RCServer 5.0.3 -memorize 1 -file 4 -scanset 4 -path "C:\a\Comcast\for" -project "C:\a\Comcast\for" -projectTemplate "" -compensator-nav -temperature 20 -camera -cam -panoramaparams fast-resolution h -quality default -from 0° -to 181° -from 120° -to 1340°

Sensor
sensors: 3096 ' barometer translation rotation'
Barometer: 0.993342 bar 161.994 m
nav translation: -0.5765 m 3.4354 m 161.3551 m accuracies: 6.8797 m 6.8797 m 0.0000 m
nav rotation: 0.0000 0.0000 282.6877 accuracies: 0.0000 0.0000 15.0000
upside-down: no
Initial pre position (0:indoor)
0.220 -0.976 0.000 -1.149
0.976 0.220 0.000 4.622
0.000 0.000 1.000 -1.379
0.000 0.000 0.000 1.000

Level system info: dynamic compensator available.



Scan position '40'

Scan position is member of group(s):

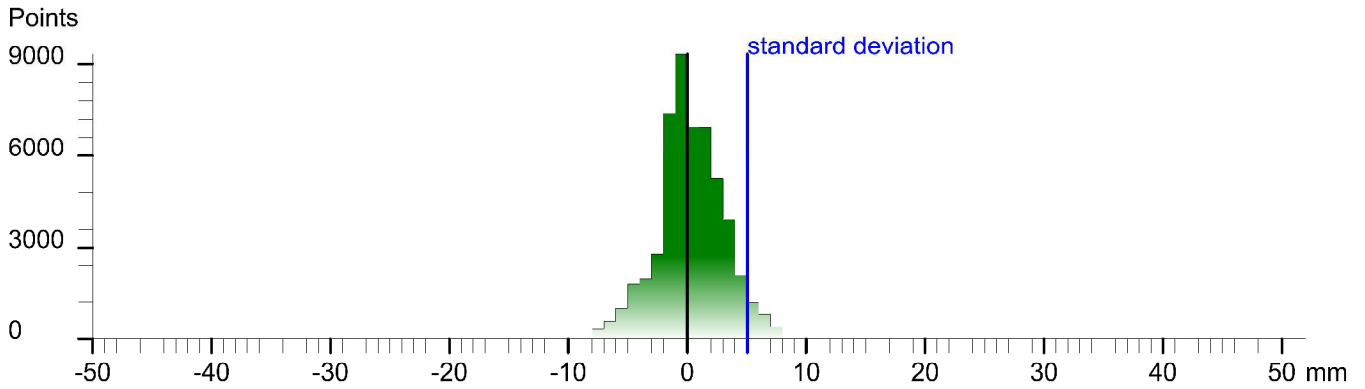
Status registration '[102h] registered with cloud to cloud'

Registration matrix:

```
-0.893659  0.448659 -0.008909  2.4823 m  
-0.448649 -0.893702 -0.003190 -1.4022 m  
-0.009393  0.001147  0.999955  10.3069 m  
0.000000  0.000000  0.000000  1.0000
```

Result registration cloud to cloud standard deviation:5.1 mm

Deviation histogram



Scan '40'

Scanner 'Z+F IMAGER 5016' serial number '5016-0100' Firmware 9.0.3.6562-0

Scan resolution 'High' quality 'Normal'

Metadata **Value**
comment
operator

```
Scan command: -cst "LRCServer 5.0.3" -memorize 1 -file "40" -scans "40" -path "C:\fs\CameraTestfor" -project "C:\fs\CameraTestfor" -projectTemplate "" -nav -temperature "20" -camera "l-cam" -panoramaParams list -resolution h -quality default -from "1" -to "181" -front "20" -int "1540"  
Sensor  
sensors: 3096 "barometer translation rotation"  
Barometer: 0.991532 bar 182.393 m  
nav translation: -0.9849 m -1.0143 m 181.7827 m accuracies: 5.8248 m 5.8248 m 0.0000 m  
nav rotation: 0.0000 0.0000 157.7643 accuracies: 0.0000 0.0000 15.0000  
upside-down: no  
Initial pre position (0:indoor)  
-0.926 0.378 0.000 -58.238  
-0.378 -0.926 0.000 9.070  
0.000 0.000 1.000 18.487  
0.000 0.000 0.000 1.000
```

Level system info: no information about the level system stored in the zfs header



Scan position '41'

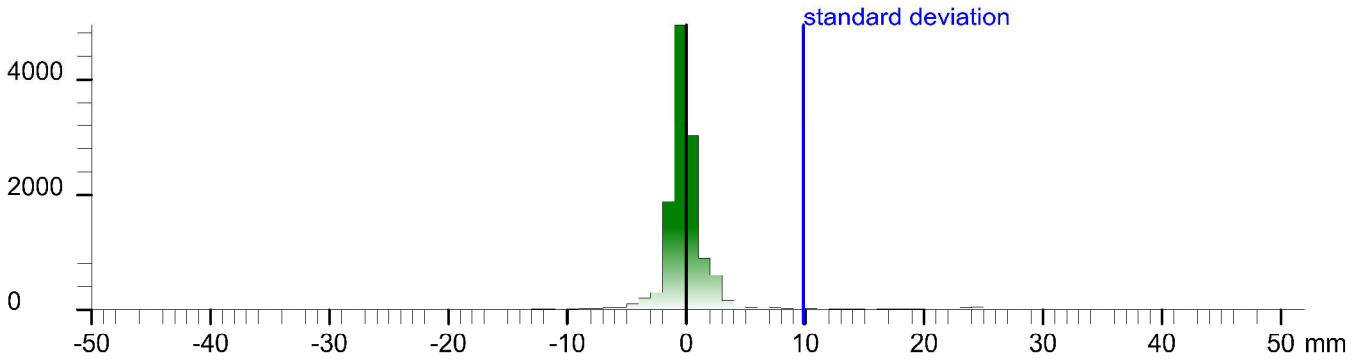
Scan position is member of group(s):
Status registration '[102h] registered with cloud to cloud'
Registration matrix:

```
0.635167 0.771131 0.043821 3.6912 m
-0.771260 0.636276 -0.017628 -3.6873 m
-0.041476 -0.022601 0.998884 9.0767 m
0.000000 0.000000 0.000000 1.0000
```

Result registration cloud to cloud standard deviation:9.8 mm

Deviation histogram

Points



Scan '41'

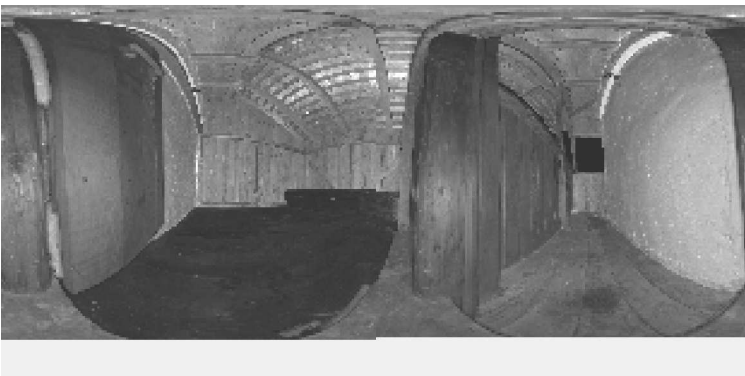
Scanner 'Z+F IMAGER 5016' serial number '5016-0100' Firmware 9.0.3.6562-0
Scan resolution 'High' quality 'Normal'

Metadata	Value
comment	
operator	

```
Scan command: -cst 1RCServer 5.0.3 -memorize 1 -file '41' -scans '41' -path 'C:\fs\CameraTestfor' -project 'C:\fs\CameraTestfor' -projectTemplate '' -nav -temperature '20' -camera '1-cam1' -panoramaparams list -resolution h -quality default -from '1' -to '181' -front '20' -int1 '340'
```

Sensor
sensors: 3100 ' barometer translation rotation gps'
Barometer: 0.991627 bar 181.585 m
nav translation: 0.1775 m -2.4881 m 181.2106 m accuracies: 6.3593 m 6.3593 m 0.0004 m
nav rotation: 0.0000 0.0000 61.9571 accuracies: 0.0000 0.0000 15.0000
upside-down: no
GPS lat:44.449711 long:23.433510 satellites:4 height:200.5m hdop:4.6 vdop:1.0m hacc:3.4m vacc:5.4 flags:G2 'stand alone 2D solution'
north:4924703.586 m east:693625.978 m zone:34T
Initial pre position (0:indoor)
0.470 0.883 0.000 -58.061
-0.883 0.470 0.000 6.582
0.000 0.000 1.000 17.915
0.000 0.000 0.000 1.000

Level system info: no information about the level system stored in the zfs header



Scan position '42'

Scan position is member of group(s):

Status registration '[102h] registered with cloud to cloud'

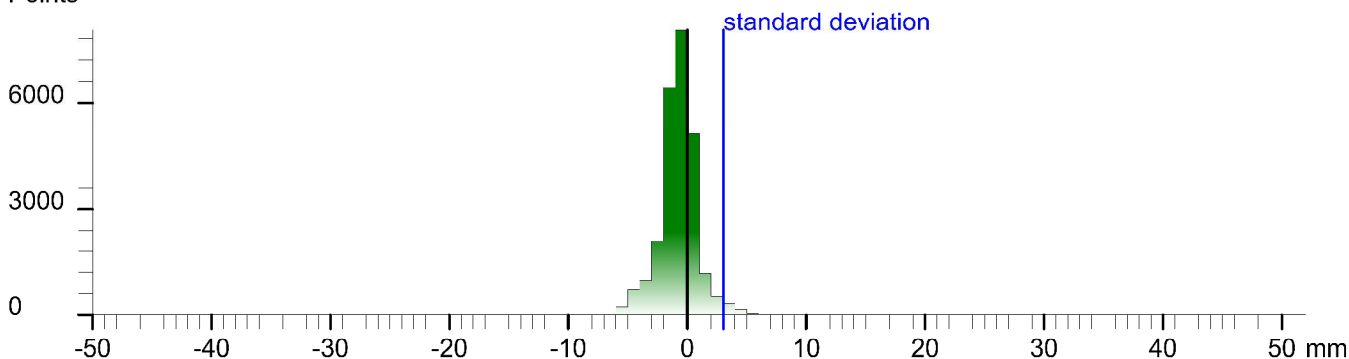
Registration matrix:

```
-0.222021 -0.975026 0.005539 3.8813 m
0.975014 -0.222054 -0.006277 -5.2106 m
0.007351 0.004007 0.999965 10.2629 m
0.000000 0.000000 0.000000 1.0000
```

Result registration cloud to cloud standard deviation:3.0 mm

Deviation histogram

Points



Scan '42'

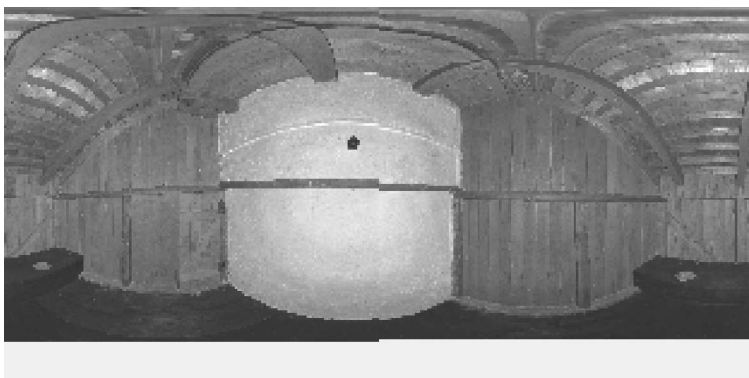
Scanner 'Z+F IMAGER 5016' serial number '5016-0100' Firmware 9.0.3.6562-0

Scan resolution 'High' quality 'Normal'

Metadata	Value
comment	
operator	

```
Scan command: -cst "LRCServer 5.0.3" -memorize 1 -file "42" -scans "42" -path "%C:\Data\CameraTestfor" -project "%C:\Data\CameraTestfor" -projectTemplate "" -nav -temperature "20" -camera "1-cant" -smartLight -panoramaparams fast -resolution h -quality default -dfrom "0" -to "180" -dfrom1 "20" -to1 "340"
Sensor
sensors: 3100' barometer translation rotation gps*
Barometer: 0.991513 bar 182.552 m
nav translation: 0.9304 m -1.3292 m 182.0926 m accuracies: 6.3984 m 6.3984 m 0.0000 m
nav rotation: 0.0000 0.0000 260.7186 accuracies: 0.0000 0.0000 15.0000
upside-down: no
GPS lat:44.449657 long:23.433271 satellites:3 height:205.2m hdop:8.9 vdop:1.0m hacc:25.4m vacc:15.0 flags:G2' stand alone 2D solution'
north:4924697.089 m east:693607.184 m zone:34T
Initial pre position (3:outdoor)
-0.161 -0.987 0.000 -57.130
0.987 -0.161 0.000 5.253
0.000 0.000 1.000 18.797
0.000 0.000 0.000 1.000
```

Level system info: no information about the level system stored in the zfs header



Scan position '43'

Scan position is member of group(s):

Status registration '[102h] registered with cloud to cloud'

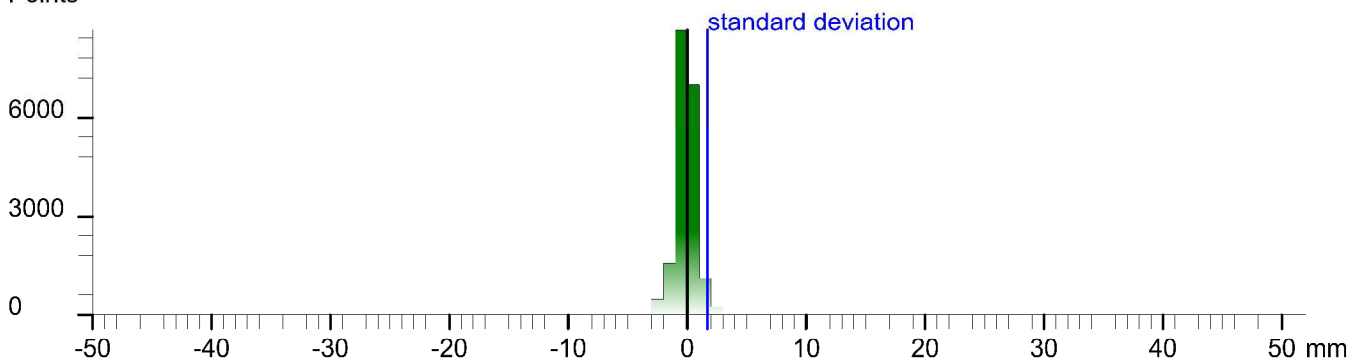
Registration matrix:

```
-0.179145  0.982349  -0.053828  7.4044 m  
-0.980777  -0.182624  -0.068736  -1.6710 m  
-0.077353  0.040480  0.996182  7.0440 m  
0.000000  0.000000  0.000000  1.0000
```

Result registration cloud to cloud standard deviation: 1.7 mm

Deviation histogram

Points



Scan '43'

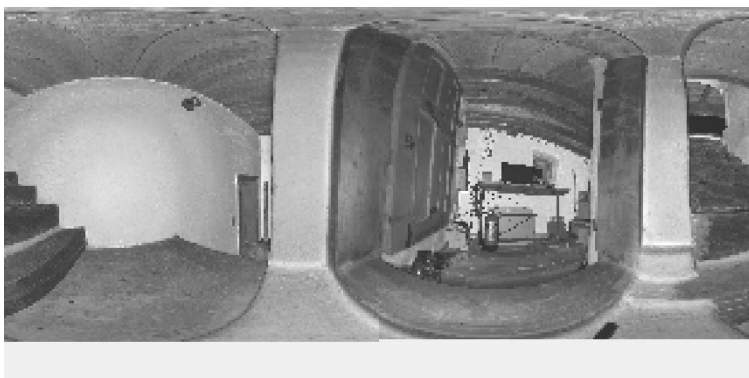
Scanner 'Z+F IMAGER 5016' serial number '5016-0100' Firmware 9.0.3.6562-0

Scan resolution 'High' quality 'Normal'

Metadata	Value
comment	
operator	

```
Scan command: -cst "LRCServer 5.0.3" -memorize 1 -file "43" -scans "43" -path "C:\Data\CameraTestfor" -project "C:\Data\CameraTestfor" -projectTemplate "" -nav -temperature "20" -camera "1-scant" -smartLight -panoramaparams fast -resolution h -quality default -dfrom "0" -to "180" -dfrom1 "20" -to1 "340"  
Sensor  
sensors: 3096 " barometer translation rotation"  
Barometer: 0.991906 bar 179.222 m  
nav translation: 17.7304 m 14.5541 m 178.5366 m accuracies: 16.7086 m 16.7086 m 0.0019 m  
nav rotation: 0.0000 0.0000 105.0525 accuracies: 0.0000 0.0000 15.0000  
upside-down: no  
Initial pre position (0:indoor)  
-0.260 0.966 0.000 -39.400  
-0.966 -0.260 0.000 19.807  
0.000 0.000 1.000 15.241  
0.000 0.000 0.000 1.000
```

Level system info: no information about the level system stored in the zfs header



Scan position '45'

Scan position is member of group(s):

Status registration '[102h] registered with cloud to cloud'

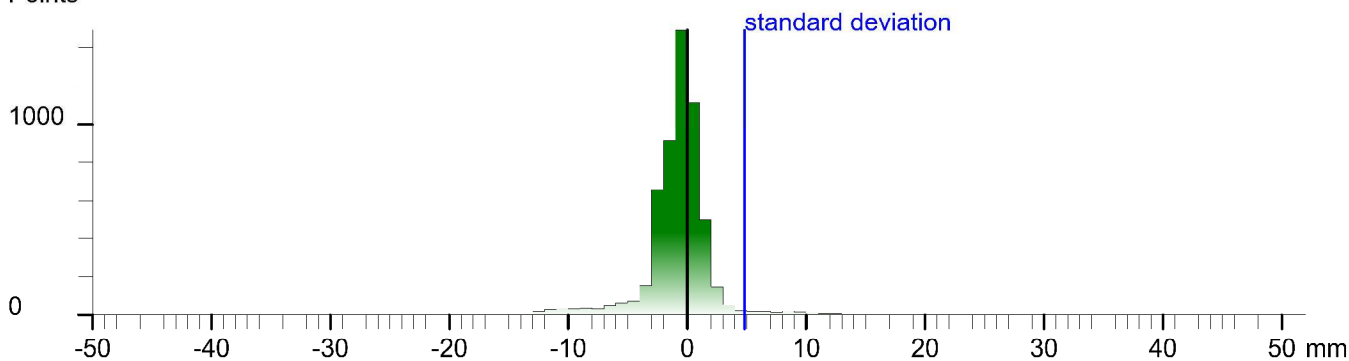
Registration matrix:

```
0.609132 -0.793064 0.002919 7.3286 m
0.793032 0.609135 0.007501 -0.5303 m
-0.007727 -0.002255 0.999968 6.7627 m
0.000000 0.000000 0.000000 1.0000
```

Result registration cloud to cloud standard deviation:4.8 mm

Deviation histogram

Points



Scan '45'

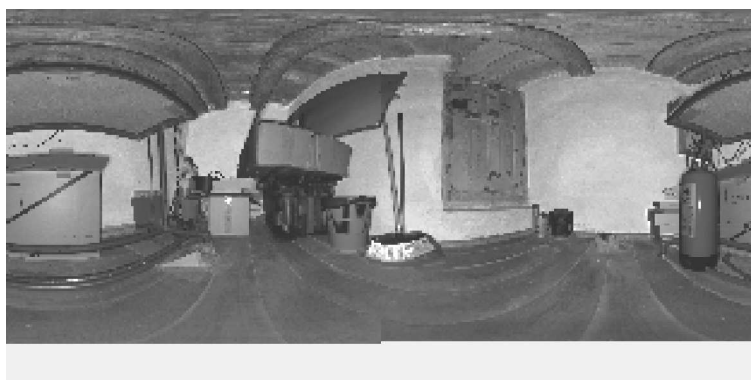
Scanner 'Z+F IMAGER 5016' serial number '5016-0100' Firmware 9.0.3.6562-0

Scan resolution 'High' quality 'Normal'

Metadata	Value
comment	
operator	

```
Scan command: -cst 1LRCServer 5.0.3* -memorize 1 -file '45' -scans '45' -path "C:\fs\CameraTestfor" -project "C:\fs\CameraTestfor" -projectTemplate "" -nav -temperature "20" -camera "1-scant" -smartLight -panoramaparams fast -resolution h -quality default -dfrom "0" -to "180" -dfrom "0" -to "360"
Sensor
sensors: 3096 " barometer translation rotation"
Barometer: 0.991987 bar 178.538 m
nav translation: -0.7263 m 0.3138 m 178.4566 m accuracies: 5.5089 m 5.5089 m 0.0000 m
nav rotation: 0.0000 0.0000 316.0563 accuracies: 0.0000 0.0000 15.0000
upside-down: no
Initial pre position (0:indoor)
0.744 -0.668 0.000 -42.065
0.668 0.744 0.000 18.609
0.000 0.000 1.000 15.161
0.000 0.000 0.000 1.000
```

Level system info: no information about the level system stored in the zfs header



Scan position '5'

Scan position is member of group(s):

Status registration '[102h] registered with cloud to cloud'

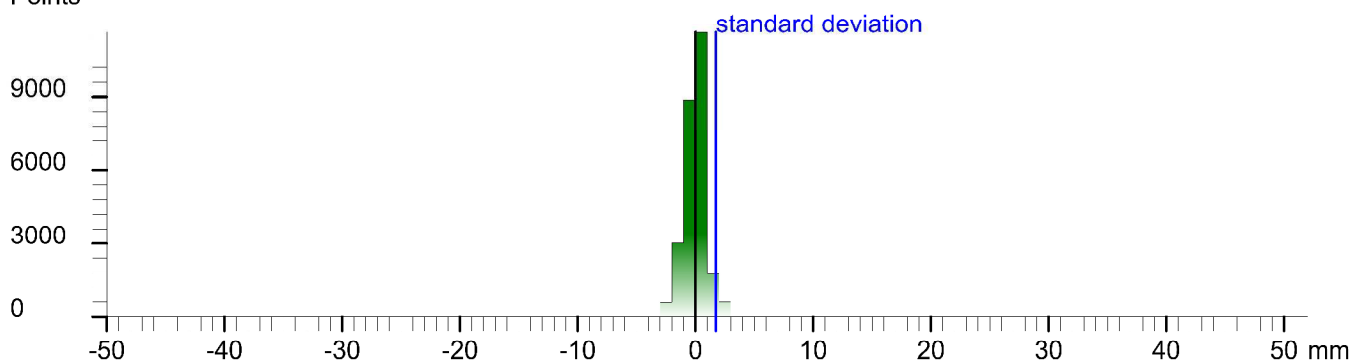
Registration matrix:

```
-0.840392  0.541320 -0.026713  8.5957 m
-0.541676 -0.837252  0.074811 -0.5977 m
0.018131  0.077341  0.996840  2.4888 m
0.000000  0.000000  0.000000  1.0000
```

Result registration cloud to cloud standard deviation: 1.7 mm

Deviation histogram

Points



Scan '5'

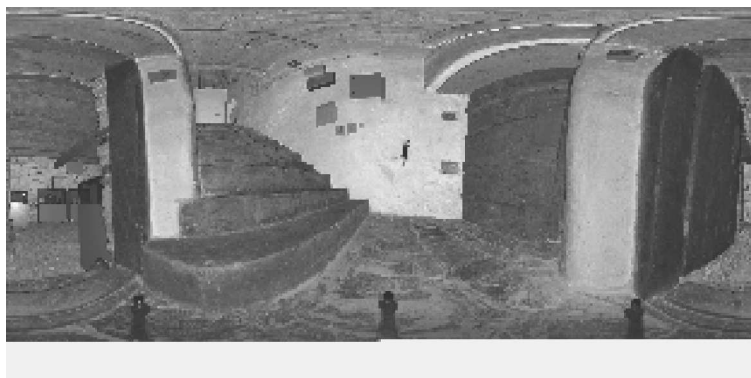
Scanner 'Z+F IMAGER 5016' serial number '5016-0100' Firmware 9.0.3.6562-0

Scan resolution 'High' quality 'Normal'

Metadata	Value
comment	
operator	

```
Scan command: -cst "LRCServer 5.0.3" -memorize 1 -file "5" -scanpos "5" -path "C:\a\Carat\testfor" -project "C:\a\Carat\testfor" -projectTemplate "" -nav -temperature "20" -camera "zcam" -panoramaparams fast-resolution h-quality default-dfcm "10" -fo "181" -hrcm "120" -hrc1 "540"
Sensor
sensors: 3096 " barometer translation rotation"
Barometer: 0.994202 bar 159.791 m
nav translation: 2.9601 m 2.0223 m 159.6839 m accuracies: 6.9155 m 6.9155 m 0.0016 m
nav rotation: 0.0000 0.0000 151.3860 accuracies: 0.0000 0.0000 15.0000
upside-down: no
Initial pre position (0:indoor)
-0.878 0.479 0.000 1.811
-0.479 -0.878 0.000 6.644
0.000 0.000 1.000 -3.050
0.000 0.000 0.000 1.000
```

Level system info: no information about the level system stored in the zfs header



Scan position '6'

Scan position is member of group(s):

Status registration '[102h] registered with cloud to cloud'

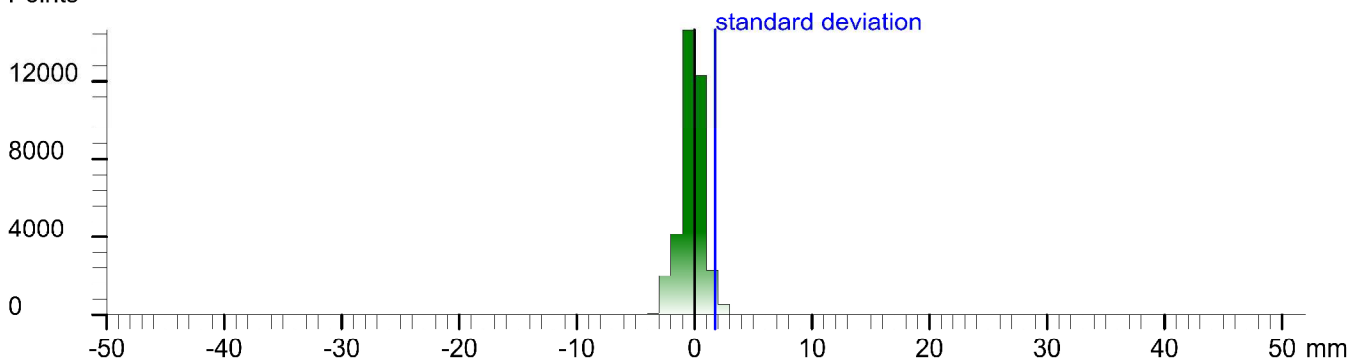
Registration matrix:

```
-0.830524 -0.556983 0.000322 8.4052 m
0.556983 -0.830524 -0.000047 -0.0430 m
0.000294 0.000141 1.000000 3.6785 m
0.000000 0.000000 0.000000 1.0000
```

Result registration cloud to cloud standard deviation: 1.8 mm

Deviation histogram

Points



Scan '6'

Scanner 'Z+F IMAGER 5016' serial number '5016-0100' Firmware 9.0.3.6562-0

Scan resolution 'High' quality 'Normal'

Metadata	Value
comment	
operator	

```
Scan command: -cst "LRCServer 5.0.3" -memorize 1 -file "6" -scanses "6" -path "C:\Data\CameraTestfor" -project "C:\Data\CameraTestfor" -projectTemplate "" -compensator-nav -temperature "20" -camera "zcam" -panoramaparams fast-resolution h -quality default -frown "0" -to "181" -frown1 "20" -hmi "540"
Sensor
sensors: 3096 " barometer translation rotation"
Barometer: 0.993959 bar 161.848 m
nav translation: 1.7010 m -4.6298 m 161.2787 m accuracies: 7.6173 m 7.6173 m 0.0000 m
nav rotation: 0.0000 0.0000 216.7268 accuracies: 0.0000 0.0000 15.0000
upside-down: no
Initial pre position (0:indoor)
-0.780 -0.626 0.000 3.512
0.626 -0.780 0.000 2.015
0.000 0.000 1.000 -1.435
0.000 0.000 0.000 1.000
```

Level system info: dynamic compensator available.



Scan position '7'

Scan position is member of group(s):

Status registration '[102h] registered with cloud to cloud'

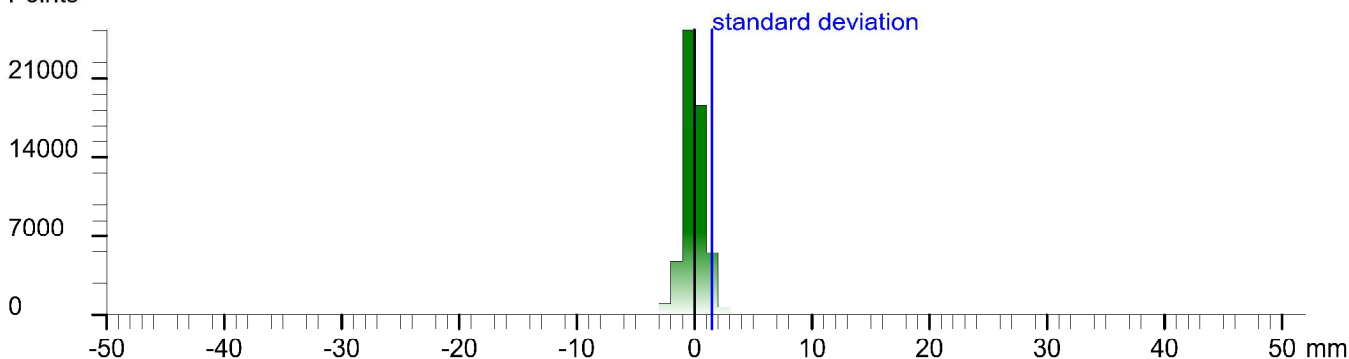
Registration matrix:

```
-0.988832 -0.149036 0.000459 7.1955 m  
0.149035 -0.988832 -0.000498 -0.5637 m  
0.000528 -0.000424 1.000000 4.6420 m  
0.000000 0.000000 0.000000 1.0000
```

Result registration cloud to cloud standard deviation: 1.5 mm

Deviation histogram

Points



Scan '7'

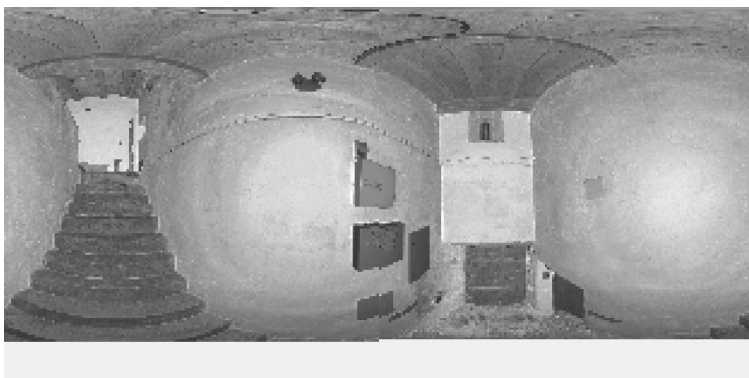
Scanner 'Z+F IMAGER 5016' serial number '5016-0100' Firmware 9.0.3.6562-0

Scan resolution 'High' quality 'Normal'

Metadata	Value
comment	
operator	

```
Scan command: -cst "LRCServer 5.0.3" -memorize 1 -file "7" -scansize "7" -path "C:\Data\CameraTestfor" -project "C:\Data\CameraTestfor" -projectTemplate "" -compensator-nav -temperature "20" -camera "zcam" -panoramaparams fast-resolution h -quality default -frown "0" -to "181" -frown "20" -hmi "540"  
Sensor  
sensors: 3096 " barometer translation rotation"  
Barometer: 0.993780 bar 163.363 m  
nav translation: -3.0197 m -0.3705 m 162.7994 m accuracies: 6.6355 m 6.6355 m 0.0000 m  
nav rotation: 0.0000 0.0000 189.6844 accuracies: 0.0000 0.0000 15.0000  
upside-down: no  
Initial pre position (0:indoor)  
-0.986 -0.168 0.000 0.492  
0.168 -0.986 0.000 1.644  
0.000 0.000 1.000 0.066  
0.000 0.000 0.000 1.000
```

Level system info: dynamic compensator available.



Scan position '8'

Scan position is member of group(s):

Status registration '[102h] registered with cloud to cloud'

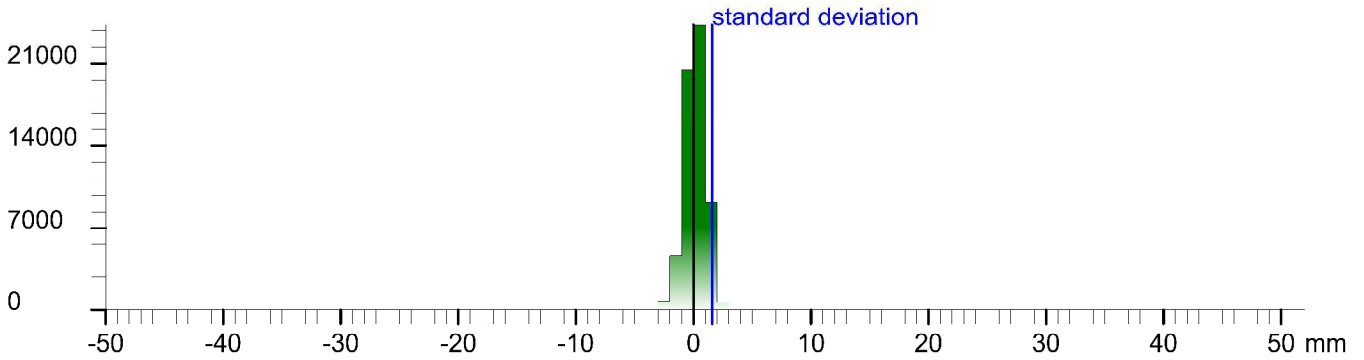
Registration matrix:

```
-0.996090 -0.088333 0.001006 6.2878 m  
0.088332 -0.996091 -0.001094 -1.1377 m  
0.001099 -0.001001 0.999999 5.5508 m  
0.000000 0.000000 0.000000 1.0000
```

Result registration cloud to cloud standard deviation: 1.6 mm

Deviation histogram

Points



Scan '8'

Scanner 'Z+F IMAGER 5016' serial number '5016-0100' Firmware 9.0.3.6562-0

Scan resolution 'High' quality 'Normal'

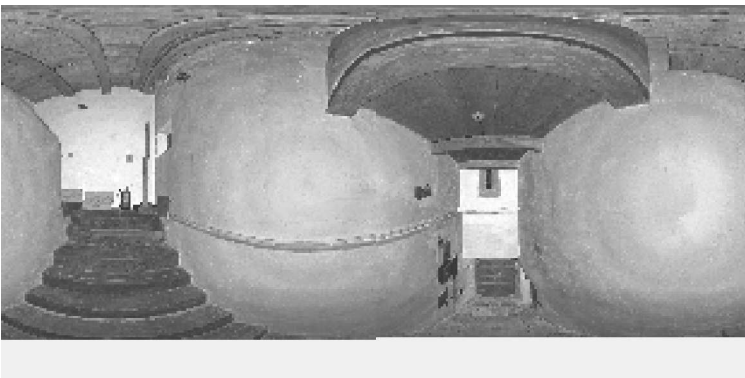
Metadata	Value
comment	
operator	

Scan command: -cst "LRCServer 5.0.3" -memorize 1 -file "8" -scanses "8" -path "C:\data\testfor" -project "C:\data\testfor" -projectTemplate "" -compensator-nav -temperature "20" -camera "s-cam" -panoramaparams fast-resolution h -quality default -from "0" -to "181" -from1 "20" -to1 "340"

Sensor

sensors: 3096 ' barometer translation rotation'
Barometer: 0.993699 bar 164.047 m
nav translation: -2.5765 m -1.0297 m 163.6811 m accuracies: 6.4958 m 6.4958 m 0.0000 m
nav rotation: 0.0000 0.0000 186.0925 accuracies: 0.0000 0.0000 15.0000
upside-down: no
Initial pre position (0:indoor)
-0.994 -0.106 0.000 -2.085
0.106 -0.994 0.000 0.614
0.000 0.000 1.000 0.947
0.000 0.000 0.000 1.000

Level system info: dynamic compensator available.



Scan position '9'

Scan position is member of group(s):

Status registration '[102h] registered with cloud to cloud'

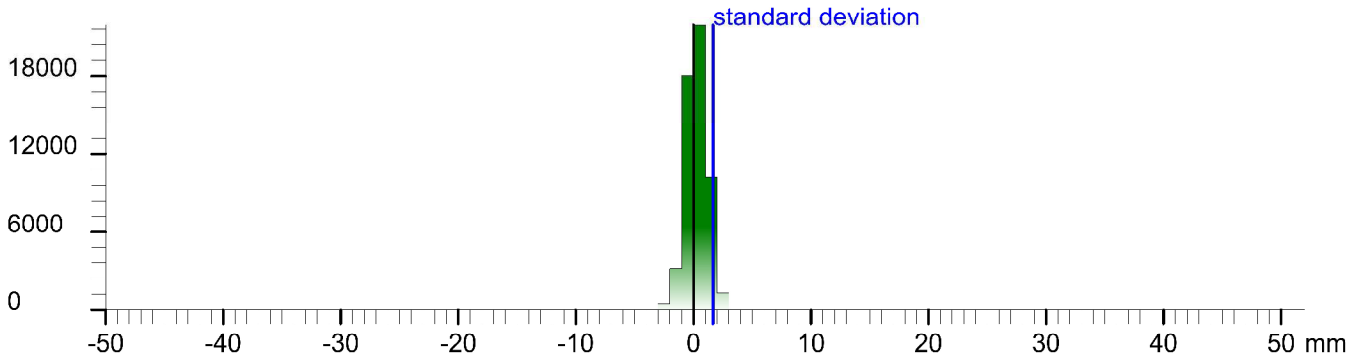
Registration matrix:

```
-0.574757  0.818323  0.001587  4.6533 m
-0.818324 -0.574755 -0.001164 -2.3054 m
-0.000040 -0.001968  0.999998  6.8226 m
0.000000  0.000000  0.000000  1.0000
```

Result registration cloud to cloud standard deviation: 1.7 mm

Deviation histogram

Points



Scan '9'

Scanner 'Z+F IMAGER 5016' serial number '5016-0100' Firmware 9.0.3.6562-0

Scan resolution 'High' quality 'Normal'

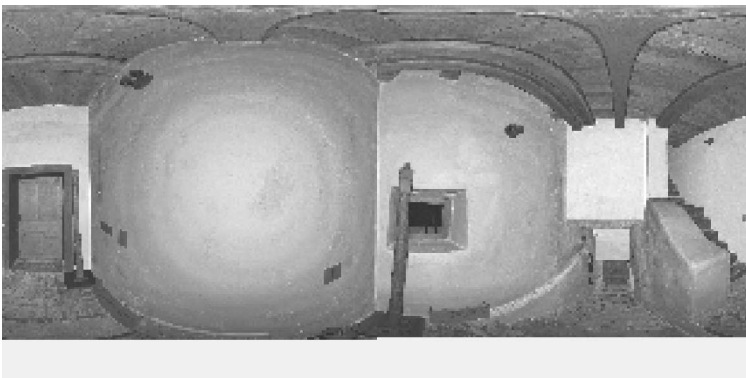
Metadata	Value
comment	
operator	

Scan command: `cat LRCServer 5.0.3 --memorize 1 -file '9' -scans '9' -path 'C:\Data\Cernatestfor' -project 'C:\Data\Cernatestfor' -projectTemplate "" -compensator -nav -temperature 20 -camera "cam" -panoramaparams fast-resolution h -quality default -from "0" -to "181" -from1 "20" -to1 "540"`

Sensor

```
sensors: 3096 'barometer translation rotation'
Barometer: 0.993543 bar 165.368 m
nav translation: -3.6345 m -2.7457 m 164.8481 m accuracies: 7.3950 m 7.3950 m 0.0000 m
nav rotation: 0.0000 0.0000 126.3476 accuracies: 0.0000 0.0000 15.0000
upside-down: no
Initial pre position (0:indoor)
-0.620 0.784 0.000 -5.719
-0.784 -0.620 0.000 -2.131
0.000 0.000 1.000 2.114
0.000 0.000 0.000 1.000
```

Level system info: dynamic compensator available.



Labels

No labels stored in project

Links

No links stored in project

Summary

Number of scans: **44** used in **44** scan positions

Point clouds: **0**

Scans with color: **0** mapped **0**

Scans with thermal data: **0** mapped **0**

Scans with errors:**0** warnings:**0** messages:**0**

Missed or corrupted scans files: **0**

Scanners used in the project: **5016-0100**

0 known targets used

0 targets used in **0** of **44** scan positions

First scan taken at: **12.6.2023 10:34::49** last scan at: **12.6.2023 17:09:26**

Duration: **6h 34min 37sec**